

SRG/SRGM Series

- 304 stainless steel cylinder body, non repairable construction
- 303 Stainless steel heads and caps
- 303 Stainless steel piston rod standard on all bore sizes
- Urethane rod wiper standard
- Available with bumpers and magnetic pistons
- Double acting models only
- Available with Nose, Foot and Pivot Mounts
- Corrosion resistant, reinforced plastic pivot bushing



Operating information

Operating pressure: 250 PSIG (17 bar) for SRG and SRGM
 Temperature range: -10°F to 165°F (-23°C to 74°C) for SRG
 14°F to 140°F (-10°C to 60°C) for SRGM
 Filtration requirements: 40 micron, dry filtered air

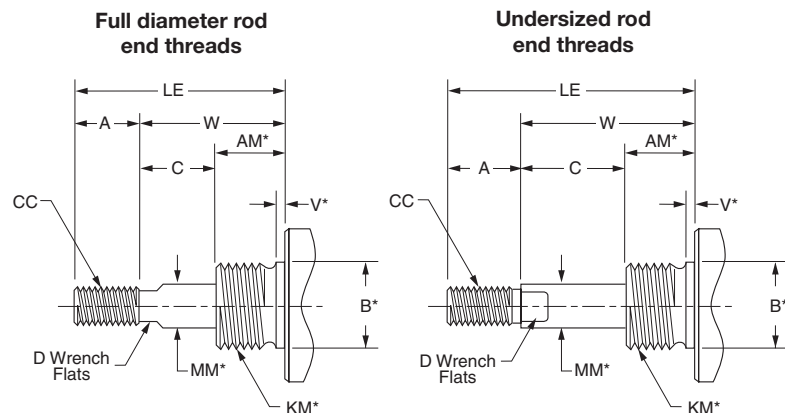
Ordering information

1.06	D	SRG	B	V	Y	2.00
Bore Size	Series	Seals	Piston	Stroke	Non-Standard Piston Rod	Non-Standard Rod
.75 3/4"	SRG Stainless caps	Blank Standard seals	Blank No bumpers	Specify in inches	Use "3" only when special piston rod end is required. Specify CC, LE and A Dimensions (See below.)	Y Stainless steel piston rod 303 stainless steel is standard on all bore sizes
1.06 1-1/16"	SRGM Stainless caps and magnetic piston	V Fluorocarbon seals*	B With bumpers			
1.50 1-1/2"		Urethane rod wiper is standard				
2.00 2"	Mounting	* Fluorocarbon seals not available on SRGM series.				
2.50 2-1/2"	D, DXP					
					Special	
					Use "S" only if special modifications are required, except piston rod end.	

Sensors
 For sensors see page 39-42.

Non-Standard Rods

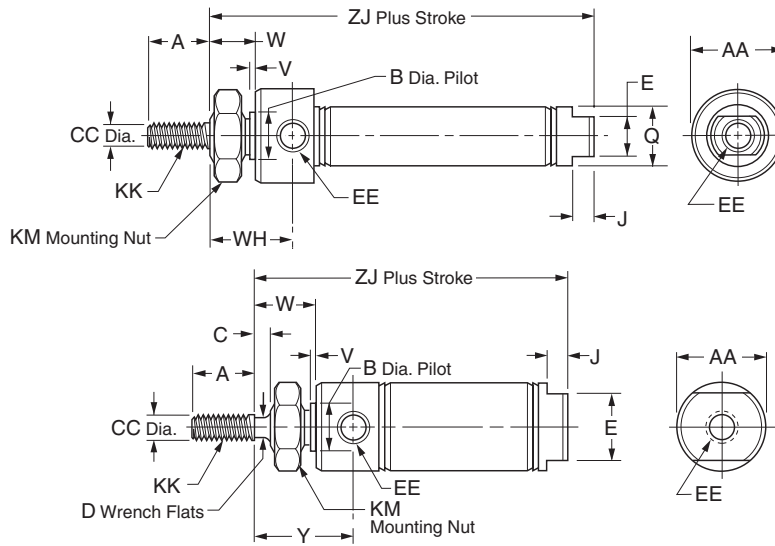
For non-standard rod dimensions, or undersized rod end threads, put a "3" in model number and describe the rod using the letters shown in the drawing. Specify CC, LE and A dimensions. LE is measured in retracted position.



* Requires an S designation in model number.

Mounting Style D

Nose mount, double acting



Bore sizes
3/4"

Bore sizes
1-1/16"
1-1/2"
2" *
2-1/2" *

* No mounting nuts

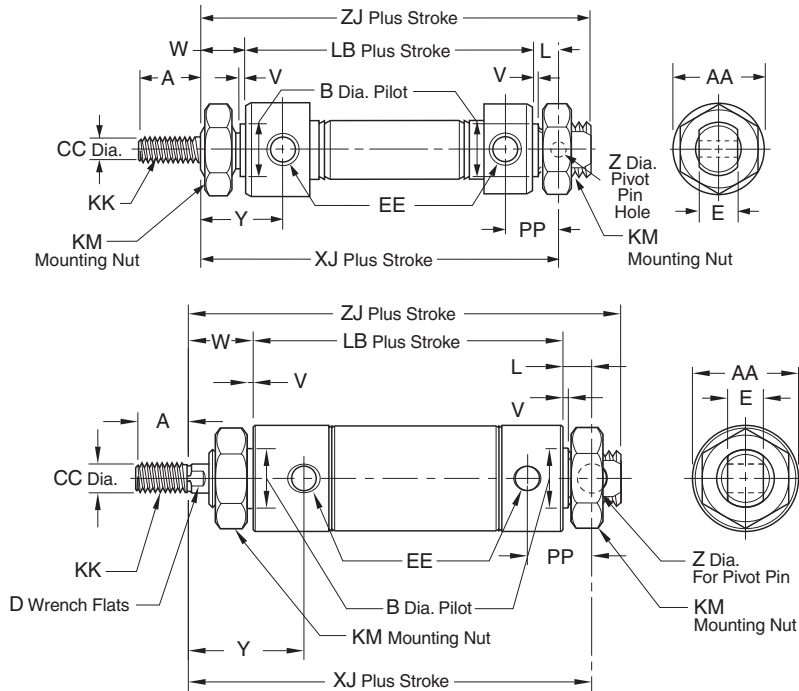
Bore size	Std. stroke (in)	Max. stroke (in)	SS rod std	A	AA	B	C	CC	D
3/4"	1/2, 1, 2, 2-1/2, 3, 4, 5, 6, 8, 10	12	✓	0.50	0.86	0.624	-	0.250	-
1-1/16"	1/2, 1, 1-1/2, 2, 2-1/2, 3, 4, 5, 6, 8, 10, 12	12	✓	0.50	1.12	0.624	0.12	0.312	0.25
1-1/2"	1/2, 1, 2, 3, 4, 5, 6, 8, 10, 12	12	✓	0.75	1.56	0.749	0.25	0.437	0.38
2"	-	12	✓	0.88	2.08	1.374	0.38	0.625	0.50
2-1/2"	-	12	✓	0.88	2.62	1.500	0.38	0.625	1/2

Bore size	ZJ											
	E	EE	J	KK	KM	Q	V	W	WH	Y	SRG	SRGM
3/4"	0.62	1/8 NPTF	0.19	1/4-28 UNF	5/8-18	0.81	0.09	0.50	0.97	-	2.97	2.97
1-1/16"	0.88	1/8 NPTF	0.19	5/16-24 UNF	5/8-18	-	0.09	0.62	-	1.19	3.25	3.41
1-1/2"	0.88	1/8 NPTF	0.25	7/16-20 UNF	3/4-16	-	0.09	0.88	-	1.50	3.69	3.94
2"	1.25	1/4 NPTF	0.31	1/2-20 UNF	1-1/4-12	-	0.12	1.19	-	1.84	4.69	4.97
2-1/2"	1.75	1/4 NPTF	0.31	1/2-20 UNF	1-3/8-12	-	0.13	1.19	-	1.84	4.69	4.69

Mounting nuts sold separately for all series SRG

Mounting Style DXP

Pivot & nose mount, double acting, no pivot pin



Bore sizes
3/4"

Bore sizes
1-1/16"
1-1/2"
2" *
2-1/2" *

* No mounting nuts

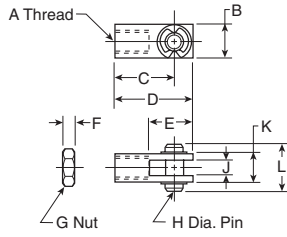
Bore size	Std. stroke (in)	Max. stroke (in)	SS rod std	A	AA	B	CC	D	E	EE
3/4"	1, 2, 3, 4, 5, 6, 8, 10	32	✓	0.50	0.86	0.624	0.250	-	0.38	1/8 NPTF
1-1/16"	1/2, 1, 1-1/2, 2, 2-1/2, 3, 4, 5, 6, 8, 10, 12	32	✓	0.50	1.12	0.624	0.312	0.25	0.38	1/8 NPTF
1-1/2"	-	32	✓	0.75	1.56	0.749	0.437	0.38	0.62	1/8 NPTF
2"	-	32	✓	0.88	2.08	1.374	0.625	0.50	0.75	1/4 NPTF
2-1/2"	-	32	✓	0.88	2.62	1.500	0.625	1/2	0.75	1/4 NPTF

Bore size	KK	KM	L	LB	PP	V	W	XJ		Y	Z	ZJ	
								SRG	SRGM			SRG	SRGM
3/4"	1/4-28 UNF	5/8-18	0.34	2.91	0.62	0.09	0.50	3.75	3.75	0.97	0.251	4.03	4.03
1-1/16"	5/16-24 UNF	5/8-18	0.34	-	0.62	0.09	0.62	3.84	-	1.19	0.251	4.12	4.28
1-1/2"	7/16-20 UNF	3/4-16	0.50	-	0.81	0.09	0.88	4.38	4.63	1.50	0.376	4.75	5.00
2"	1/2-20 UNF	1-1/4-12	0.56	-	1.03	0.12	1.19	5.62	5.91	-	0.376	6.06	6.34
2-1/2"	1/2-20 UNF	1-3/8-12	0.56	-	1.03	0.13	1.19	5.62	5.62	1.84	0.376	6.06	6.06

Mounting nuts sold separately for all series SRG

Piston Rod Clevis

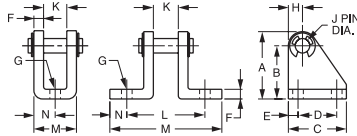
Assembly includes pin and (2) retainer rings and (1) jam nut.



Bore size	A	B	C	D	E	F	G	H	J	K	L	Part number
3/4	1/4-28	.50	.94	1.19	.68	.16	1/4-28	.25	.25	.50	.69	L077130200
1-1/16	5/16-24	.50	.94	1.19	.68	.19	5/16-24	.25	.25	.50	.69	L077130300
1-1/2	7/16-20	.75	1.31	1.69	.94	.25	7/16-20	.38	.38	.75	1.03	L077130400
2, 2-1/2	1/2-20	.75	1.31	1.69	.94	.31	1/2-20	.38	.38	.75	1.03	L077130500

Pivot Bracket Assembly

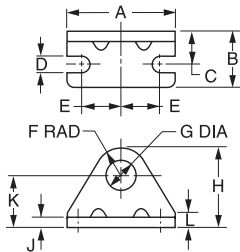
Assembly includes pin and (2) retainer rings.



Bore size	A	B	C	D	E	F	G	H	J	K	L	M	N	Part number
3/4, 1-1/16	1.18	.88	1.12	.75	.19	.12	.27	.30	.250	.38	1.25	2.00	.38	L077150200
1-1/2	1.75	1.38	1.50	1.00	.25	.25	.27	.37	.375	.62	2.00	2.88	.44	L077150400
2, 2-1/2	1.75	1.38	1.50	1.00	.25	.25	.27	.37	.375	.75	2.12	3.00	.44	L077150500

Stainless steel.

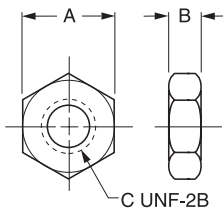
Foot Brackets



Bore size	A	B	C	D	E	F	G	H	J	K	L	Part number
3/4, 1-1/16	1.88	1.00	.56	.27	.75	.56	.63	1.38	.12	.81	.25	L077160040
1-1/2	2.50	1.50	.75	.27	.94	.75	.75	1.75	.12	1.00	.38	L077160048
2	3.12	1.62	1.00	.34	1.12	1.00	1.38	2.50	.25	1.50	.62	L077160124
2-1/2	3.75	1.62	1.00	.35	1.44	1.25	1.51	3.00	.25	1.75	.75	L077160132

Stainless steel.

Mounting Nut



Bore size	A	B	C	Part number
3/4, 1-1/16	.94	.38	5/8-18	L077170800
1-1/2	1.12	.42	3/4-16	L077170900
2	1.88	.50	1-1/4-12	L077171200
2-1/2	2.06	.78	1-3/8-12	L077171400

Stainless steel.

Electronic Sensor Selection Guide

PNP Solid State Sensor

Bore size or type	3m flying leads	10m flying leads	8mm quick connect	8mm quick connect w/ 1 m lead	12mm quick connect	Bracket	Sensor page #	Bracket page #
9/16" - 3/4"	P8S-GPFLX	P8S-GPFTX	P8S-GPSHX	P8S-GPSCX	P8S-GPMHX	P8S-TMC01	40	42
1-1/16" - 2-1/2"	P8S-GPFLX	P8S-GPFTX	P8S-GPSHX	P8S-GPSCX	P8S-GPMHX	P8S-TMC02	40	42

NPN Solid State Sensor

Bore size or type	3m flying leads	10m flying leads	8mm quick connect	8mm quick connect w/ 1m lead	12mm quick connect	Bracket	Sensor page #	Bracket page #
9/16" - 3/4"	P8S-GNFLX	P8S-GNFTX	P8S-GNSHX	P8S-GNSCX	P8S-GNMHX	P8S-TMC01	40	42
1-1/16" - 2-1/2"	P8S-GNFLX	P8S-GNFTX	P8S-GNSHX	P8S-GNSCX	P8S-GNMHX	P8S-TMC02	40	42

Reed Sensor

Bore size or type	3m flying leads	10m flying leads	8mm quick connect	8mm quick connect w/ 1m lead	12mm quick connect	Bracket	Sensor page #	Bracket page #
9/16" - 3/4"	P8S-GRFLX	P8S-GRFTX	P8S-GRSHX	P8S-GRSCX	P8S-GRMHX	P8S-TMC01	41	42
1-1/16" - 2-1/2"	P8S-GRFLX	P8S-GRFTX	P8S-GRSHX	P8S-GRSCX	P8S-GRMHX	P8S-TMC02	41	42

1. Flying leads are 2 meters in length
2. Flying leads are 1.5 meters in length
3. Flying leads are 1 meter in length
4. Flying leads are 5 meter in length

P8S Global Drop-In Solid State Sensors



Wiring	PNP sensor	NPN sensor	PNP sensor ATEX certified
3m flying leads	P8S-GPFLX	P8S-GNFLX	P8S-GPFLX/EX
10m flying leads	P8S-GPFTX	P8S-GNFTX	
0.3m lead with 8mm connector	P8S-GPSHX	P8S-GNSHX	N/A
0.3m lead with 12mm connector	P8S-GPMHX	P8S-GNMHX	
1m lead with 8mm connector	P8S-GPSCX	P8S-GNSCX	

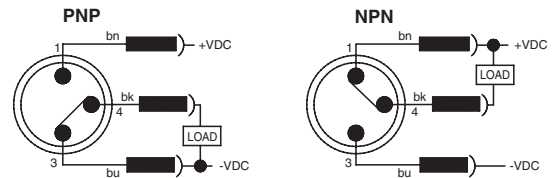
Specifications

Switch classification	Standard PNP or NPN	ATEX certified PNP
Type	Electronic	
Output function	Normally open	
Sensor output	PNP/NPN	PNP
Operating voltage	10 - 30VDC	180 - 30VDC
Continuous current	100 mA max.	70 mA max.
Response sensitivity	28 Gauss min.	
Switching frequency	1 KHz	
Power consumption	10 mA max.	
Voltage drop	2.5 VDC max.	
Ripple	10% of operating voltage	
Hysteresis	1.5 mm max.	
Repeatability	0.1 mm max.	
EMC	EN 60 947-5-2	
Short-circuit protection	Yes	
Power-up pulse suppression	Yes	
Reverse polarity protection	Yes	
Enclosure rating	IP 68	
Shock and vibration stress	30g, 11 ms, 10 to 55 Hz, 1 mm	
Operating temperature range	-25°C to +75°C (-13°F to 167°F)	-20°C to +45°C (-4°F to 113°F)
Housing material	PA 12, black	
Connector cable	PVC	
Connector	PUR	—
Approval for ATEX	—	3D/3G

Wiring connection

Flying lead or 8 mm connector (shown)

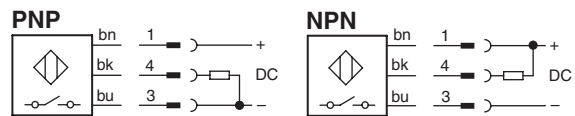
Pin	Wire	Function
1	Brown	Operating voltage (+VDC)
4	Black	Output signal (N.O.)
3	Blue	-VDC



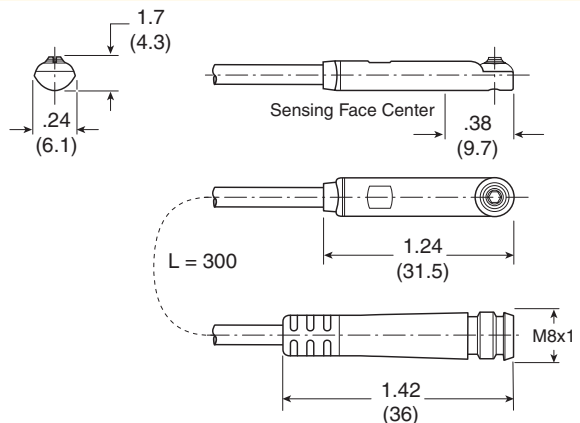
12 mm connector

Pin	Wire	Function
1	Brown	Operating voltage (+VDC)
4	Black	Output signal (N.O.)
2*	White	Not used
3	Blue	-VDC

* Pin 2 not present.



Dimensions



P8S Global Drop-In Reed Sensors



Wiring	Reed sensor
3m flying leads	P8S-GRFLX
10m flying leads	P8S-GRFTX
0.3m lead with 8mm connector	P8S-GRSHX
0.3m lead with 12mm connector	P8S-GRMHX
1m lead with 8mm connector	P8S-GRSCX

Specifications

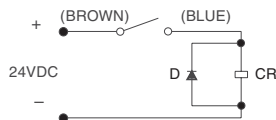
Type	2-Wire Reed
Output function	Normally open
Operating voltage	10 - 120 VAC*, 10 - 30 VDC
Switching power	6 W/VA
Continuous current	100 mA max.
Response sensitivity	30 Gauss min.
Switching frequency	400 Hz
Voltage drop	2.5 V max.
Ripple	10% of operating voltage
Hysteresis	1.5 mm max.
Repeatability	0.2 mm max.
Emc	EN 60 947-5-2
Reverse polarity protection	Yes
Enclosure rating	IP 68
Shock and vibration stress	30g, 11 ms, 10 to 55 Hz, 1 mm
Operating temperature range	-25°C to 75°C (-13°F to 167°F)
Housing material	PA 12, Black
Connector cable	PVC
Connector	PUR cable with 8 or 12 mm connector

* 8mm connector rated for 50 vac max.

Circuit for switching contact protection (for inductive loads, e.g. solenoids, relays)

(Required for proper operation 24VDC)

Put diode parallel to load (CR) following polarity as shown.

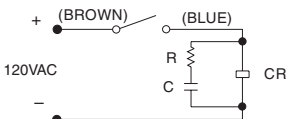


D: Diode: select a diode with the breakdown voltage and current rating according to the load.

Typical Example – 100 volt, 1 amp diode
 CR: Relay coil (under 0.5W coil rating)

(Recommended for longer life 120 VAC)

Put a resistor and capacitor in parallel with the load (CR).
 Select the resistor and capacitor according to the load.

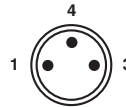


Typical Example:

CR: Relay coil (under 2W coil rating)
 R: Resistor 1 KΩ - 5 KΩ, 1/4 W
 C: Capacitor 0.1 μF, 600 V

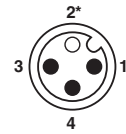
Wiring connection

Flying Lead or 8 mm Connector



Pin	Wire	Function
1	Brown	Operating voltage (+V)
4	Black	Not used
3	Blue	Output signal (-V or ground)

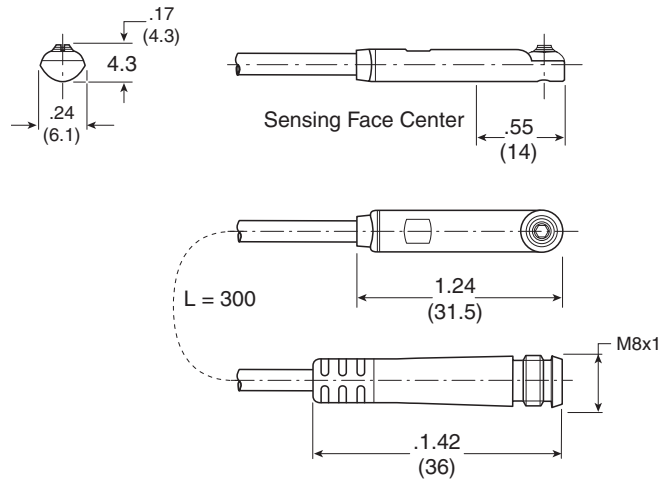
12 mm Connector



Pin	Wire	Function
1	Brown	Operating voltage (+V)
2*	White	Not used
3	Blue	Output signal (-V or ground)
4	Black	Not used

* Pin 2 not present.

Dimensions



⚠ Caution

- Use an ammeter to test reed sensor current. Testing devices such as incandescent light bulbs may subject the reed sensor to high in-rush loads.
- **NOTE:** When checking an unpowered reed sensor for continuity with a digital ohmmeter the resistance reading will change from infinity to a very large resistance (2 M ohm) when the sensor is activated. This is due to the presence of a diode in the reed sensor.
- Anti-magnetic shielding is recommended for reed sensors exposed to high external RF or magnetic fields.
- The magnetic field strength of the piston magnet is designed to operate with our sensors. Other manufacturers' sensors may not operate correctly in conjunction with these magnets.
- Use relay coils for reed sensor contact protection.
- The operation of some 120 VAC PLC's (especially some older Allen-Bradley PLC's) can overload the reed sensor. The sensor may fail to release after the piston magnet has passed. This problem may be corrected by the placement of a 700 to 1K OHM resistor between the sensor and the PLC input terminal. Consult the manufacturer of the PLC for appropriate circuit.
- Sensors with long wire leads (greater than 15 feet) can cause capacitance build-up and sticking will result. Attach a resistor in series with the reed sensor (the resistor should be installed as close as possible to the sensor). The resistor should be selected such that R (ohms) > E/0.3.

Round body bracket assembly part numbers

Sensors and brackets must be ordered separately

Bore size	Round body bracket
9/16" - 1-1/16"	P8S-TMC01
20 - 25mm	P8S-TMC01
1-1/8" - 2-1/2"	P8S-TMC02
32 - 63mm	P8S-TMC02
3" - 4"	P8S-TMC03
80 - 100mm	P8S-TMC03

P8S-TMA0Z

