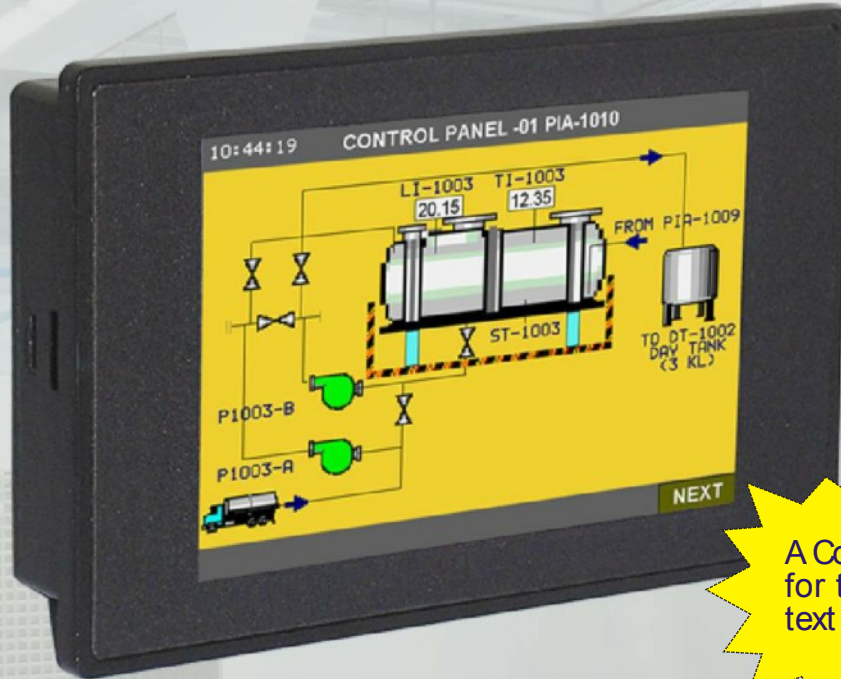


FlexiPanels® - FP3035

Say goodbye to text displays.....

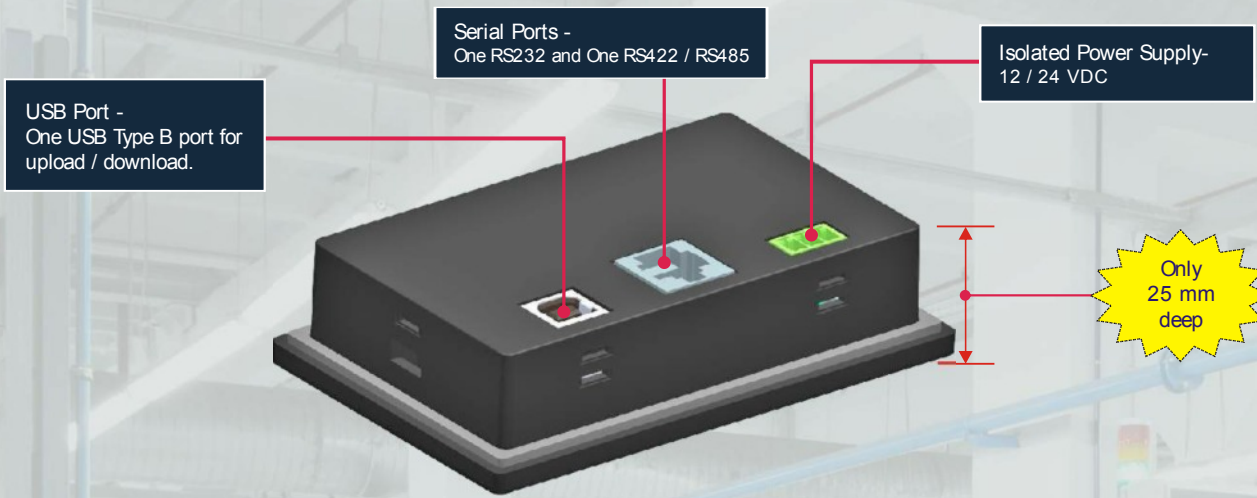


A Color TFT HMI
for the price of a
text HMI

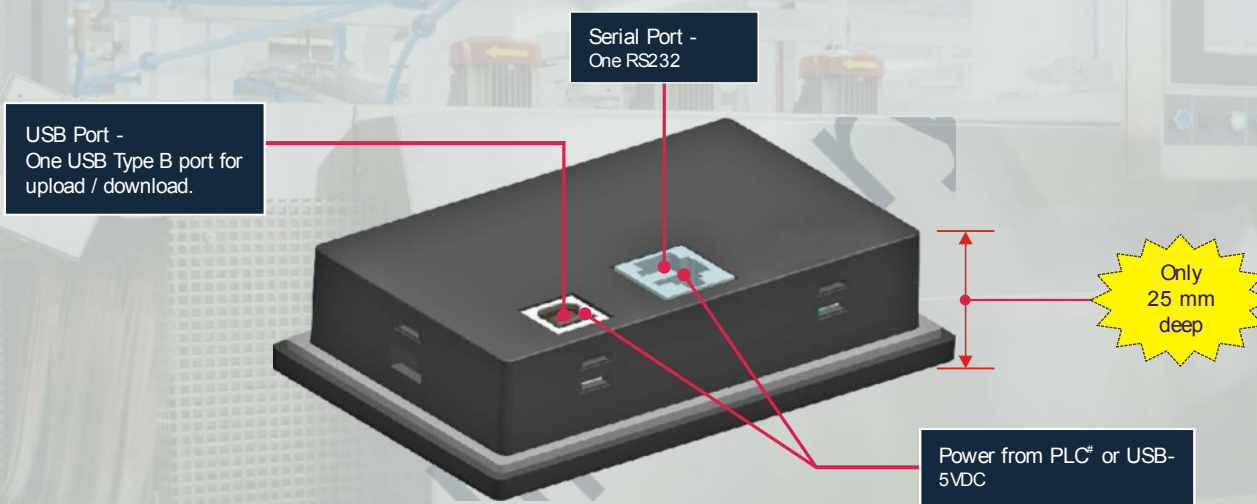
Features:

- ☑ 3.5" Color HVGA TFT display (Resolution 480 x 320 pixels)
- ☑ Touch screen
- ☑ RTC
- ☑ Two serial ports (One RS232 port, One RS485 port*)
- ☑ USB Type B port for programming
- ☑ 24 VDC or PLC powered
- ☑ 32-bit RISC processor
- ☑ Front Panel Mounting
- ☑ CE, UL Class 1 Div 2, IP66, RoHS

Model Description : FP3035T-24



Model Description : FP3035T-5



Model Comparison

Product	Model	Power	Display	TS	Memory	Screen Memory	Serial Ports**	USB	RTC	Power Consumption	Weight (Approx.)	Bezel Dimensions (mm)	Panel Outcut (mm)
FP3035	FP3035T-24	12 / 24VDC	480x320 HVGA 3.5" Color TFT	Yes	Up-to 16.5 MB	Up-to 16 MB	2**	Device	Yes	1W	300 gms.	107 W x 69 H x 25 D	97 W x 59 H
	FP3035T-5	5VDC from PLC ^o or USB port of PC	480x320 HVGA 3.5" Color TFT	Yes	Up-to 16.5 MB	Up-to 16 MB	1	Device	Yes	1W	300 gms.	107 W x 69 H x 25 D	97 W x 59 H

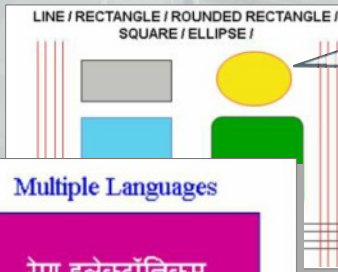
** One "RJ45" type port that supports RS232 and RS485 levels on different pins. "Y" type cable can be supplied to use the RS232 and RS485 ports simultaneously.

EMI/EMC, Environmental and Mechanical Specifications

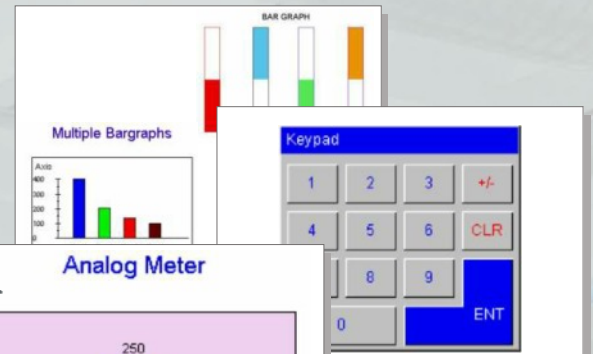
EMI/EMC	
Immunity to ESD	as per IEC61000-4-2
Immunity to Fast Transients	as per IEC61000-4-4
Immunity to Radiated electromagnetic field	as per IEC61000-4-3
Immunity to Conducted disturbances	as per IEC61000-4-6
Surge	as per IEC61000-4-5
Emission	as per EN55011

Environmental and Mechanical	
Temperature	0 to 50° C (operating), -20 to 85° C (storage)
Humidity	10 to 85 % non condensing
Vibration immunity	IEC60068-2-6
Shock immunity	IEC60068-2-27
Dimensions (mm)	107mm(W) X 69 mm(H) X 25mm(D)

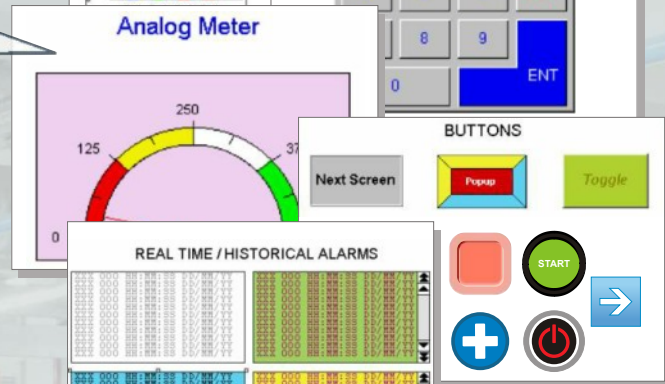
HMI Software Features



Graphical Objects
FlexiSoft® supports various graphical objects like Rectangle / Rounded Rectangle / Ellipse / Square and Line.



Advanced Objects
FlexiSoft® supports most popular advanced objects like Bargraphs, Multiple Bargraphs, Analog Meter Real Time / Historical Alarms, Buttons.



Windows Fonts for Data Entry and Data Display

Arial, 12pt
Arial, 14pt
Arial, 18pt

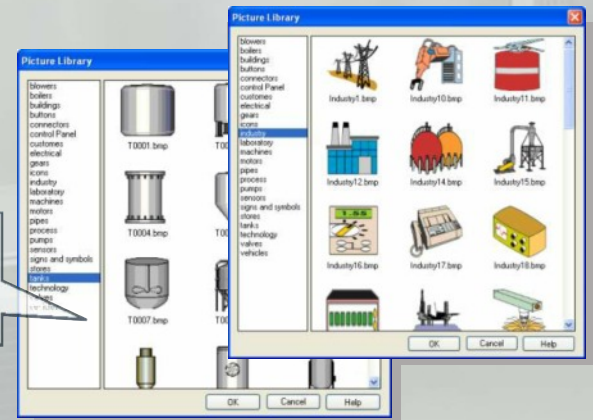
Windows Fonts for Data Entry and Data Display

Times New Roman, 22pt
30pt
42pt
50pt
62pt

Tahoma

72pt
90pt

Windows Font for Display Data and Data Entry
FlexiSoft® supports True type Windows font for Data Entry and Data Display objects. Supported fonts are 'Arial', 'Times New Roman' and 'Tahoma'.



Picture Library
FlexiSoft® provides rich picture library. It includes many popular image categories widely used for industrial application development.



Real Time Clock
Real Time Clock object helps user to display date, time and day of week.

Supported Objects

Drawing Tools
<input type="checkbox"/> Line, Rectangle, Ellipse
<input type="checkbox"/> Rounded Rectangle
<input type="checkbox"/> Text, Multilingual text
<input type="checkbox"/> Picture
Data Entry / Data Display
<input type="checkbox"/> Numeric data
<input type="checkbox"/> Bit data
Clock objects
<input type="checkbox"/> Time
<input type="checkbox"/> Date

Advance Objects
<input type="checkbox"/> Buttons
<input type="checkbox"/> Lamps
<input type="checkbox"/> Bar graph
<input type="checkbox"/> Multiple Bargraph
<input type="checkbox"/> Analog Meter
<input type="checkbox"/> Alarm
<input type="checkbox"/> Numeric Keypad
<input type="checkbox"/> ASCII Keypad
<input type="checkbox"/> Custom Keypad

Supported Tasks

Supported tasks
<input type="checkbox"/> Button specific tasks
<input type="checkbox"/> Global tasks
<input type="checkbox"/> Screen specific tasks
<input type="checkbox"/> Data exchange tasks

Protocols Supported Include

Driver	FP3035
ABB	✓
Allen Bradley DF1	✓
Aromat FP Series	✓
Baldor	✓
Danfoss Drive	✓
Delta	✓
Fatek	✓
GE Fanuc	✓
GE SNP-X	✓

Driver	FP3035
Idec	✓
LG Master K series	✓
LG Master-K 300S	✓
Mitsubishi FX	✓
Mitsubishi Q series (Serial)	✓
Modbus master	✓
Modbus slave	✓
Omron Host Link	✓
Omron Yaskawa Drive	✓

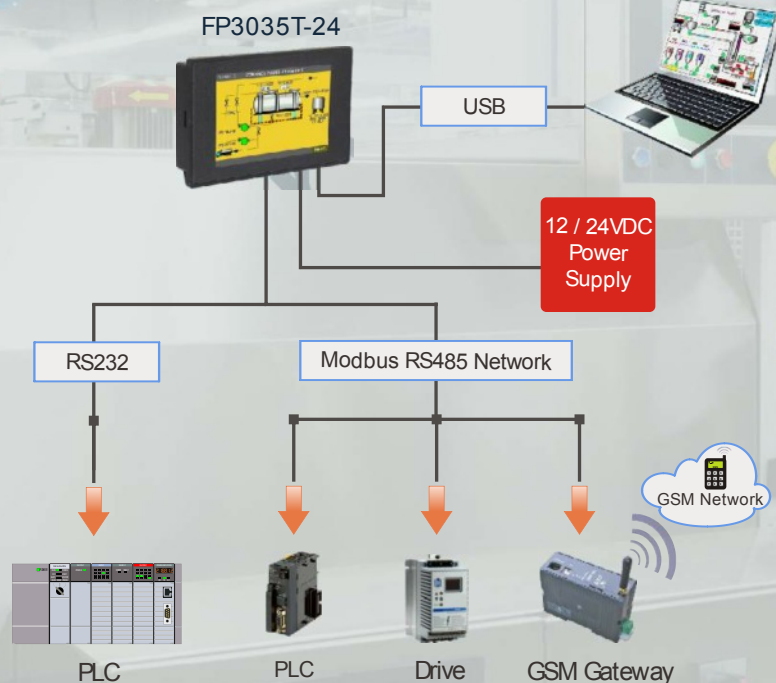
Driver	FP3035
Serial Monitor	✓
Siemens-S7-200	✓
Siemens-S7-300	✓
Toshiba Inverters	✓
Toshiba T1	✓
Toshiba T2 Link port	✓
Twido	✓
Unitelway	✓
Universal Serial (ASCII)	✓

Application Example

Remote Display for FL005 PLC



HMI for Control Application



Accessories

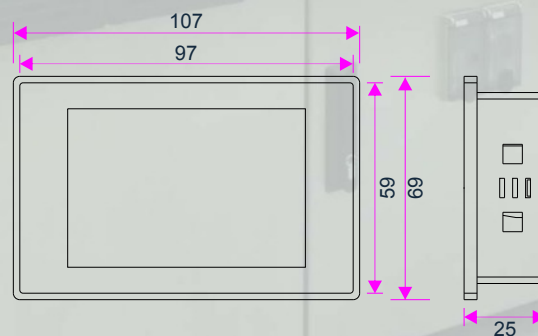
FP to FL Cables	FP3035-24	FP3035-5
USB Cable	PC-USBAB-00	PC-USBAB-00
232 Cable (COM1)	RC-P-009H-00	RC-I-187A-00
485 4 Wire (COM1)	RC-P-009I-00	NA
485 2 Wire (COM2)	RC-P-009J-00	NA

Supported Printers

- FlexiPanels® support following Dot matrix serial printers:
- EPSON
 - SAMSUNG
 - TVS



Dimensions



Please contact factory for more information. We welcome an opportunity to develop new, custom drivers and customized units.

All dimensions are in mm.



An ISO 9001:2008 and ISO 14001:2004 certified company

(Preliminary Datasheet. Specifications subject to change without prior notice. DS-FP3035-Rev.L)

www.comoso.com