

HORIZONTAL RESERVOIRS

HORIZONTAL REMOVABLE TOP

The non-JIC type horizontal steel reservoirs have a bolt on top and an internal baffle extending from one end with clearance above and on the return side of the reservoir. The reservoirs have a low profile flat bottom with mounting feet outward from the ends. Each reservoir is supplied with a sight gage, filler breather, steel top and top cover gasket.

Standard Features:

1. (1) 5 inch GT623 Series sight gage
2. Filler breather (no hole provided)
 - Bayonet style 40 micron
3. (1) 3/4 inch NPT drain with plug
4. Top plate gasket
5. Steel construction with removable top
6. Exterior of reservoir prime painted
7. Interior of reservoir coated with rust preventative oil

8. Materials

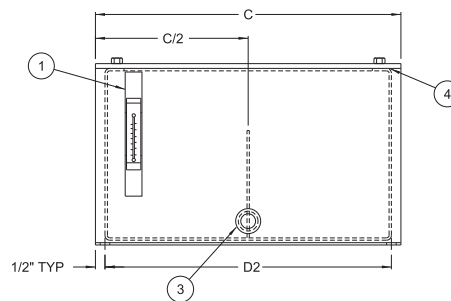
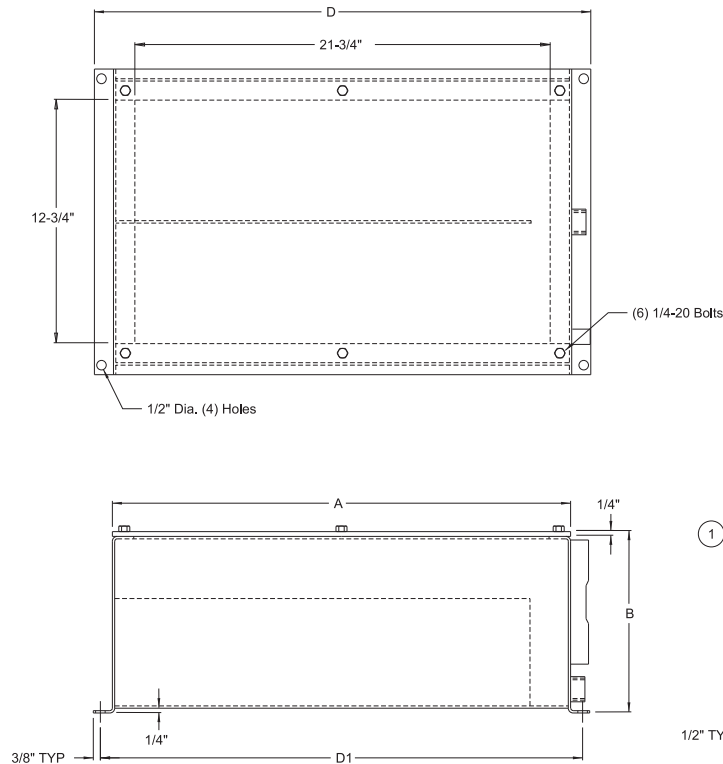
- Carbon steel construction
- Buna N sight gage seals and neoprene top gasket
- Transparent molded nylon sight gage with black powder coated steel guard
- Zinc plated fill cap with nylon strainer basket

NOTE

- Drain plugs need to be sealed and tightened before use
- Sight gage and filler breather shipped loose inside reservoir
- Industry accepted design practice for hydraulic systems limits maximum operating temperature to 180° F (82° C), but materials used for fabrication of the reservoirs are capable of operating between -40° and 212° F (-40° and 100° C)

CAUTION:

▪ Reservoirs are not designed for internal positive or negative pressure applications. For these applications, consult the factory.



NOTE: All dimensions are inches [mm]

Tank Dimensions (inches)								
Capacity (gal)	Part No.	A	B	C	D	Mounting Centers		Piece Weight (lbs)
						D1 ± .12	D2 ± .12	
10	V5300	24.00	9.75	16.00	26.00	25.25	15.00	72
20	V5301	24.00	15.75	16.00	26.00	25.25	15.00	80
30	V5302	24.00	21.75	16.00	26.00	25.25	15.00	112
40	V5303	24.00	27.75	16.00	26.00	25.25	15.00	133

LDI Part Number No Baffle
V215310
V215320
V215330
V215340

Dimensions and specifications are subject to change without notice. Not all items are Made-To-Stock, contact us for availability.

04/15

Ph : 920-682-6877
Fx : 920-684-7210



sales@ldi-industries.com
www.ldi-industries.com