

Lin-Act

Series M2 Universal Midget Pneumatic Cylinders

Catalog LA0930-1
(10/99)



- Four Bore Sizes 3/4" thru 1 1/4"
- Factory Prelubricated
- Square, Steel Head and Tie Rod Construction
- 200 PSI Operating Air Pressure

Offer of Sale

The items described in this document and other documents or descriptions provided by the Company, its subsidiaries and its authorized distributors are hereby offered for sale at prices to be established by the Company, its subsidiaries and its authorized distributors. This offer and its acceptance by any customer ("Buyer") shall be governed by all of the following Terms and Conditions. Buyer's order for any such item, when communicated to the Company, its subsidiary or an authorized distributor ("Seller") verbally or in writing, shall constitute acceptance of this offer.

1. Terms and Conditions of Sale: All descriptions, quotations, proposals, offers, acknowledgments, acceptances and sales of Seller's products are subject to and shall be governed exclusively by the terms and conditions stated herein. Buyer's acceptance of any offer to sell is limited to these terms and conditions. Any terms or conditions in addition to, or inconsistent with those stated herein, proposed by Buyer in any acceptance of an offer by Seller, are hereby objected to. No such additional, different or inconsistent terms and conditions shall become part of the contract between Buyer and Seller unless expressly accepted in writing by Seller. Seller's acceptance of any offer to purchase by Buyer is expressly conditional upon Buyer's assent to all the terms and conditions stated herein, including any terms in addition to, or inconsistent with those contained in Buyer's offer. Acceptance of Seller's products shall in all events constitute such assent.

2. Payment: Payment shall be made by Buyer net 30 days from the date of delivery of the items purchased hereunder. Amounts not timely paid shall bear interest at the maximum rate permitted by law for each month or portion thereof that Buyer is late in making payment. Any claims by Buyer for omissions or shortages in a shipment shall be waived unless Seller receives notice thereof within 30 days after Buyer's receipt of the shipment.

3. Delivery: Unless otherwise provided on the face hereof, delivery shall be made F.O.B. Seller's plant. Regardless of the method of delivery, however, risk of loss shall pass to Buyer upon Seller's delivery to a carrier. Any delivery dates shown are approximate only and Seller shall have no liability for any delays in delivery.

4. Warranty: Seller warrants that the items sold hereunder shall be free from defects in material or workmanship for a period of 18 months from date of shipment from the Company. **THIS WARRANTY COMPRISES THE SOLE AND ENTIRE WARRANTY PERTAINING TO ITEMS PROVIDED HEREUNDER. SELLER MAKES NO OTHER WARRANTY, GUARANTEE, OR REPRESENTATION OF ANY KIND WHATSOEVER. ALL OTHER WARRANTIES, INCLUDING BUT NOT LIMITED TO, MERCHANTABILITY AND FITNESS FOR PURPOSE, WHETHER EXPRESS, IMPLIED, OR ARISING BY OPERATION OF LAW, TRADE USAGE, OR COURSE OF DEALING ARE HEREBY DISCLAIMED.**

NOTWITHSTANDING THE FOREGOING, THERE ARE NO WARRANTIES WHATSOEVER ON ITEMS BUILT OR ACQUIRED WHOLLY OR PARTIALLY, TO BUYER'S DESIGNS OR SPECIFICATIONS.

5. Limitation of Remedy: SELLER'S LIABILITY ARISING FROM OR IN ANY WAY CONNECTED WITH THE ITEMS SOLD OR THIS CONTRACT SHALL BE LIMITED EXCLUSIVELY TO REPAIR OR REPLACEMENT OF THE ITEMS SOLD OR REFUND OF THE PURCHASE PRICE PAID BY BUYER, AT SELLER'S SOLE OPTION. IN NO EVENT SHALL SELLER BE LIABLE FOR ANY INCIDENTAL, CONSEQUENTIAL OR SPECIAL DAMAGES OF ANY KIND OR NATURE WHATSOEVER, INCLUDING BUT NOT LIMITED TO LOST PROFITS ARISING FROM OR IN ANY WAY CONNECTED WITH THIS AGREEMENT OR ITEMS SOLD HEREUNDER, WHETHER ALLEGED TO ARISE FROM BREACH OF CONTRACT, EXPRESS OR IMPLIED WARRANTY, OR IN TORT, INCLUDING WITHOUT LIMITATION, NEGLIGENCE, FAILURE TO WARN OR STRICT LIABILITY.

6. Changes, Reschedules and Cancellations: Buyer may request to modify the designs or specifications for the items sold hereunder as well as the quantities and delivery dates thereof, or may request to cancel all or part of this order, however, no such requested modification or cancellation shall become part of the contract between Buyer and Seller unless accepted by Seller in a written amendment to this Agreement. Acceptance of any such requested modification or cancellation shall be at Seller's discretion, and shall be upon such terms and conditions as Seller may require.

7. Special Tooling: A tooling charge may be imposed for any special tooling, including without limitation, dies, fixtures, molds and patterns, acquired to manufacture items sold pursuant to this contract. Such special tooling shall be and remain Seller's property notwithstanding payment of any charges by Buyer. In no event will Buyer acquire any interest in apparatus belonging to Seller which is utilized in the manufacture of the items sold hereunder, even if such apparatus has been specially converted or adapted for such manufacture and notwithstanding any charges paid by Buyer. Unless otherwise agreed, Seller shall have the right to alter, discard or otherwise dispose of any special tooling or other property in its sole discretion at any time.

8. Buyer's Property: Any designs, tools, patterns, materials, drawings, confidential information or equipment furnished by Buyer, or any other items which become Buyer's property, may be considered obsolete and may be destroyed by Seller after two (2) consecutive years have elapsed without Buyer placing an order for the items which are manufactured using such property. Seller shall not be responsible for any loss or damage to such property while it is in Seller's possession or control.

9. Taxes: Unless otherwise indicated on the face hereof, all prices and charges are exclusive of excise, sales, use, property, occupational or like taxes which may be imposed by any taxing authority upon the manufacture, sale or delivery of the items sold hereunder. If any such taxes must be paid by Seller or if Seller is liable for the collection of such tax, the amount thereof shall be in addition to the amounts for the items sold. Buyer agrees to pay all such taxes or to reimburse Seller therefore upon receipt of its invoice. If Buyer claims exemption from any sales, use or other tax imposed by any taxing authority, Buyer shall save Seller harmless from and against any such tax, together with any interest or penalties thereon which may be assessed if the items are held to be taxable.

10. Indemnity for Infringement of Intellectual Property Rights: Seller shall have no liability for infringement of any patents, trademarks, copyrights, trade dress, trade secrets or similar rights except as provided in this Part 10. Seller will defend and indemnify Buyer against allegations of infringement of U.S. patents, U.S. trademarks, copyrights, trade dress and trade secrets (hereinafter "Intellectual Property Rights"). Seller will defend at its expense and will pay the cost of any settlement or damages awarded in an action brought against Buyer based on an allegation that an item sold pursuant to this contract infringes the Intellectual Property Rights of a third party. Seller's obligation to defend and indemnify Buyer is contingent on Buyer notifying Seller within ten (10) days after Buyer becomes aware of such allegations of infringement, and Seller having sole control over the defense of any allegations or actions including all negotiations for settlement or compromise. If an item sold hereunder is subject to a claim that it infringes the Intellectual Property Rights of a third party, Seller may, at its sole expense and option, procure for Buyer the right to continue using said item, replace or modify said item so as to make it noninfringing, or offer to accept return of said item and return the purchase price less a reasonable allowance for depreciation. Notwithstanding the foregoing, Seller shall have no liability for claims of infringement based on information provided by Buyer, or directed to items delivered hereunder for which the designs are specified in whole or part by Buyer, or infringements resulting from the modification, combination or use in a system of any item sold hereunder. The foregoing provisions of this Part 10 shall constitute Seller's sole and exclusive liability and Buyer's sole and exclusive remedy for infringement of Intellectual Property Rights.

If a claim is based on information provided by Buyer or if the design for an item delivered hereunder is specified in whole or in part by Buyer, Buyer shall defend and indemnify Seller for all costs, expenses or judgments resulting from any claim that such item infringes any patent, trademark, copyright, trade dress, trade secret or any similar right.

11. Force Majeure: Seller does not assume the risk of and shall not be liable for delay or failure to perform any of Seller's obligations by reason of circumstances beyond the reasonable control of Seller (hereinafter "Events of Force Majeure"). Events of Force Majeure shall include without limitation, accidents, acts of God, strikes or labor disputes, acts, laws, rules or regulations of any government or government agency, fires, floods, delays or failures in delivery of carriers or suppliers, shortages of materials and any other cause beyond Seller's control.

12. Entire Agreement/Governing Law: The terms and conditions set forth herein, together with any amendments, modifications and any different terms or conditions expressly accepted by Seller in writing, shall constitute the entire Agreement concerning the items sold, and there are no oral or other representations or agreements which pertain thereto. This Agreement shall be governed in all respects by the law of the State of Ohio. No actions arising out of the sale of the items sold hereunder or this Agreement may be brought by either party more than two (2) years after the cause of action accrues.

Lin-Act Series M2 The Universal Midget Air Cylinder

Specifications Mountings Table of Contents

The Series M2 Universal Midget Air Cylinders . . .

Combine premium quality features with multiple mounting styles and are designed and built for maximum performance and reliability to meet most application requirements.

Our advanced manufacturing know-how results in a lower initial cost that lets you stretch those tight design budgets without sacrificing quality.

The Series M2 air cylinder – factory pre-lubed for long life – totally integrates over 60 years of proven engineering capability and experience, high volume manufacturing

capabilities, a broad distribution network plus the **only** computer linked nationwide regional warehouse system to provide you with what you need, when you need it. See pages 2 and 3 for Series M2 cost saving design features.

Series M2 cylinders are available from strategically located regional stocking warehouses and distributor locations for quick delivery. Our system is unequalled for saving you downtime, delivery and freight costs.

For your cylinder requirements we are – The One Source you can depend on for Total Cylinder Response-Ability. Worldwide.

Standard Specifications

- Nominal pressure – up to 200 P.S.I. air service.
- Standard temperature -10°F to +165°F.
- Standard construction – square head steel design.
- Stainless steel piston rod is provided as standard for smooth performance and long life.
- Fixed cushions are available on all bore sizes (adds 1/2" per cushion to overall length).
- Four bore sizes available: 3/4", 1", 1-1/8", 1-1/4" bores.
- Standard and oversize rods available.
- Factory pre-lubed.
- Rod bushing is oil impregnated bronze.
- Spring return and extend cylinders available.
- Multiple mounting styles available – front or bottom.
- Attachable mounting kits are available.
- In field repairable.

Table of Contents

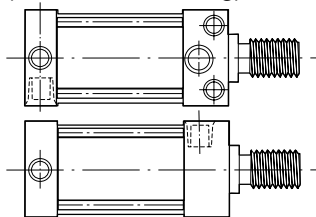
Page No.

Series M2 Universal Midget Pneumatic Cylinders

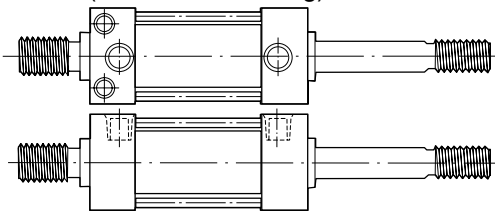
Available Mountings	1
Design Features and Materials	2, 3
Dimensions, Mounting Styles:	
3/4" Bore	4, 5
1" Bore	6, 7
1-1/8" Bore	8, 9
1-1/4" Bore	10, 11
Mounting Kits & Dimensions	12
Accessories	12
Seal Kits	12
Right Angle Flow Controls	12
How To Order	Inside Back Cover
Parts Identification	Inside Back Cover

Series M2 Available Mounting Styles

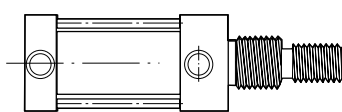
Basic Style UM2 (Universal Mounting)



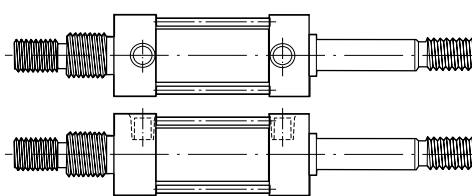
Style KUM2 Double Rod (Universal Mounting)



Basic Style NM2 (Nose Mounting)



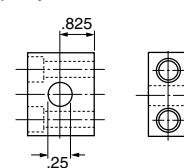
Style KNM2 Double Rod (Nose Mounting)



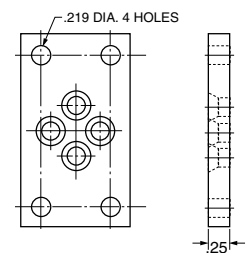
NOTE: Mounting attachments, together with their mounting screws, are bagged and packed loose in the cylinder carton for assembly at time of cylinder installation. To order, specify part name and number. (See page 12 for dimensions and ordering data.)

Mounting Kits Available

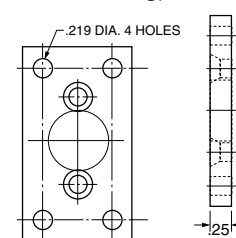
Clevis Type B (Cap End Mounting)



Flange Type H



Flange Type J (Head End Mounting)



Cylinder Division
500 So. Wolf Road
Des Plaines, IL 60016
847/298-2400

Regional Plants
■ Corona, CA
909/280-3800
■ Enfield, CT
860/749-2215
■ Atlanta, GA
770/819-3400

■ Goodland, IN
219/297-3182
■ Plymouth, MI
734/455-1700

■ Hillsborough, NC
919/732-9371
■ Akron, OH
330/253-4500
■ Portland, OR
503/285-0884

■ Owen Sound, Ont. Can
519/376-2691
■ Toronto, Ont. Can.
416/255-4567
■ Dorval, Quebec, Can.
514/631-3995

Lin-Act

Here's Why Lin-Act Series M2 "Universal Midget" Is Your Best Choice In Small Bore Air Cylinders . . .

The flush-type tie rod mount assembly provides a sound base for kit mounting.

Square head and cap are made of precision machined steel for durable long lasting performance.

The one piece steel piston is permanently brazed to the piston rod so it cannot work loose in service. A lipseal design is available. O-ring seal is standard.

The corrosion resistant body ensures excellent wear qualities and long life.

Factory prelubricated for millions of maintenance free cycles.

Oil impregnated rod bushing is bronze, reamed to a close tolerance to ensure smooth operation and long life.

Availability

Double-acting Lin-Act Universal Midget Cylinders can be shipped from stock in 1/2", 1", 1 1/2", 2", 2 1/2" and 3" stroke lengths in all bore sizes. Universal Midget Cylinders with other strokes up to 12" can be shipped within five days.

Spring return cylinders are available from stock in 1" and 2" strokes in basic style UM2R (pressure to be applied at cap end). Other spring return models can be shipped within five days.

Offer of Sale

The items described in this document are hereby offered for sale by Lin-Act Corporation, its subsidiaries or its authorized distributors. This offer and its acceptance are governed by the provisions stated on the separate page of this document entitled 'Offer of Sale.'

Cylinder Division
500 So. Wolf Road
Des Plaines, IL 60016
847/298-2400

Regional Plants
■ Corona, CA
909/280-3800
■ Enfield, CT
860/749-2215
■ Atlanta, GA
770/819-3400

■ Goodland, IN
219/297-3182
■ Plymouth, MI
734/455-1700

■ Hillsborough, NC
919/732-9371
■ Akron, OH
330/253-4500
■ Portland, OR
503/285-0884

■ Owen Sound, Ont. Can
519/376-2691
■ Toronto, Ont. Can.
416/255-4567
■ Dorval, Quebec, Can.
514/631-3995

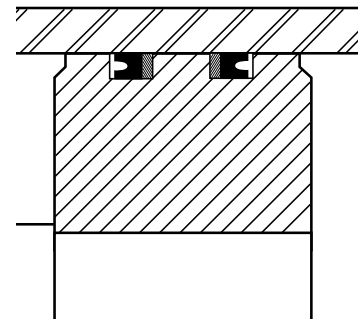
Lin-Act

Positive O-ring seals with extra long bronze rod bearing provides wear resistance and long life.

Your choice of mountings – basic cylinder can be mounted four different ways – (1) with mounting bolts through the top of the head and cap (position 1); (2) into tapped holes in the bottom of the head and cap (position 3); (3) into tapped holes in the front of the head; and (4) into tapped holes in the back of the cap. Additional clevis and flange attachments provide a mounting to meet every requirement. Nose mounted models are standard.

Mounting holes are counter bored from the top and tapped at the bottom on the head and cap for easy and accurate mounting.

OPTIONAL FEATURE



Lipseal® Pistons

Add 1/2" to cylinder overall length.
All bore sizes.

Stainless steel piston rod has a tough rust-proof construction for smooth operation and reliable performance.

Specifications

• **Force Data:** (To determine force, multiply your operating pressure by the area figures.)

Bore	Rod Dia.	Major Area (Sq. In.)	Minor Area (Sq. In.)	Bore	Rod Dia.	Major Area (Sq. In.)	Minor Area (Sq. In.)
3/4	STD. 1/4	.442	.393	1 1/8	STD. 3/8	.994	.884
	O.S. 5/16		.365		O.S. 1/2		.799
1	STD. 5/16	.785	.709	1 1/4	STD. 3/8	1.227	1.117
	O.S. 3/8		.675		O.S. 1/2		1.031

• **Operating pressures:** To 200 p.s.i. of filtered and lubricated air.

• **Bore sizes:** 3/4", 1", 1 1/8" and 1 1/4".

• **Rod Diameter:** Choice of standard and oversize piston rods.

• **Operating temperatures:** For best seal life, maximum operating temperature is 130°F. If working temperatures will be higher than 165°F, special high-temperature seals are available.

• **Strokes:** Any stroke length is available as standard up to 12 inches. Consult factory for applications requiring a longer stroke.

• **Lubrication:** Use high grade hydraulic oil with high aniline point and paraffin base.

Cylinder Division
500 So. Wolf Road
Des Plaines, IL 60016
847/298-2400

Regional Plants
■ Corona, CA
909/280-3800
■ Enfield, CT
860/749-2215
■ Atlanta, GA
770/819-3400

■ Goodland, IN
219/297-3182
■ Plymouth, MI
734/455-1700

■ Hillsborough, NC
919/732-9371
■ Akron, OH
330/253-4500
■ Portland, OR
503/285-0884

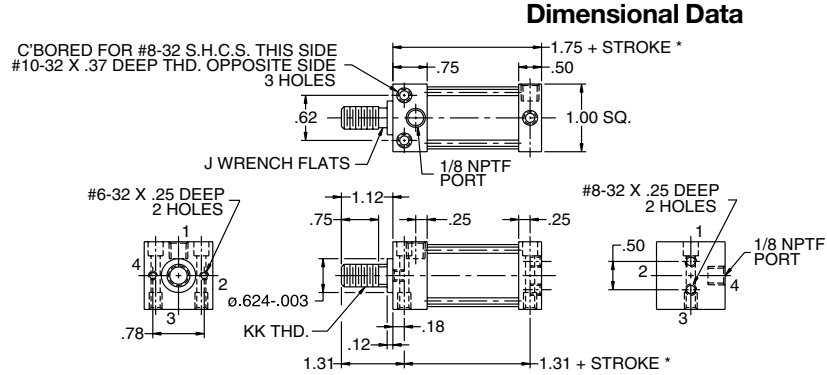
■ Owen Sound, Ont. Can
519/376-2691
■ Toronto, Ont. Can.
416/255-4567
■ Dorval, Quebec, Can.
514/631-3995

Lin-Act

Lin-Act Series M2 Universal Midget Air Cylinder

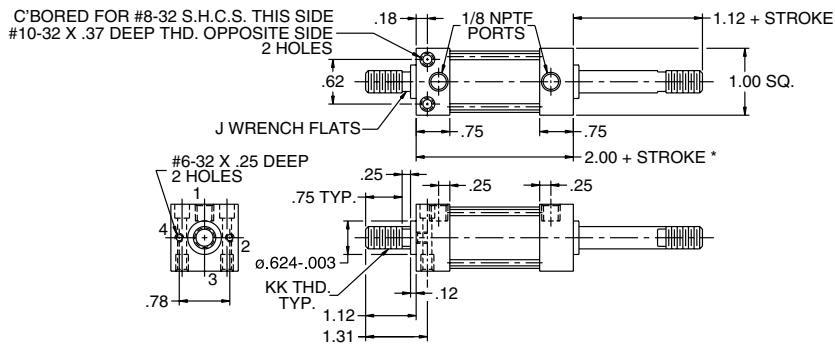
3/4" Bore
Double Acting

Basic Style UM2 Universal Mounting



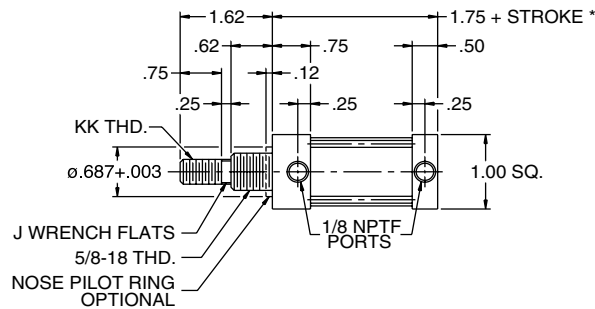
*For lipseal dimension add 1/2" to dimension shown.

Mounting Style KUM2 Double Rod Universal Mounting



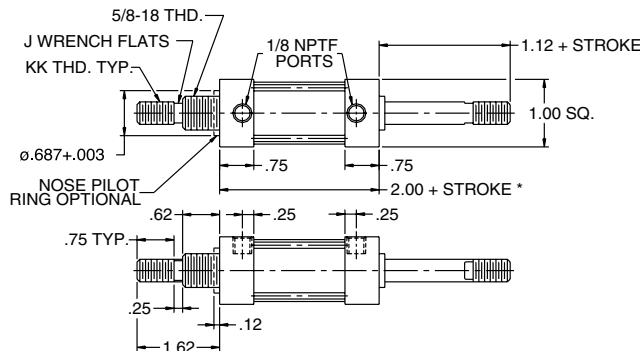
*For lipseal dimension add 1/2" to dimension shown.

Basic Style NM2 Nose Mounting



*For lipseal dimension add 1/2" to dimension shown.

Mounting Style KNM2 Double Rod Nose Mounting



*For lipseal dimension add 1/2" to dimension shown.

Rod End Dimensions				
Bore	Rod		Thd. KK Style 6	J
	No.	Dia.		
3/4"	1-Std.	1/4	1/4-20	7/32
	3-O.S.	5/16	5/16-18	1/4

Cylinder Division
500 So. Wolf Road
Des Plaines, IL 60016
847/298-2400

Regional Plants

- Corona, CA 909/280-3800
- Enfield, CT 860/749-2215
- Atlanta, GA 770/819-3400

- Goodland, IN 219/297-3182
- Plymouth, MI 734/455-1700

- Hillsborough, NC 919/732-9371
- Akron, OH 330/253-4500
- Portland, OR 503/285-0884

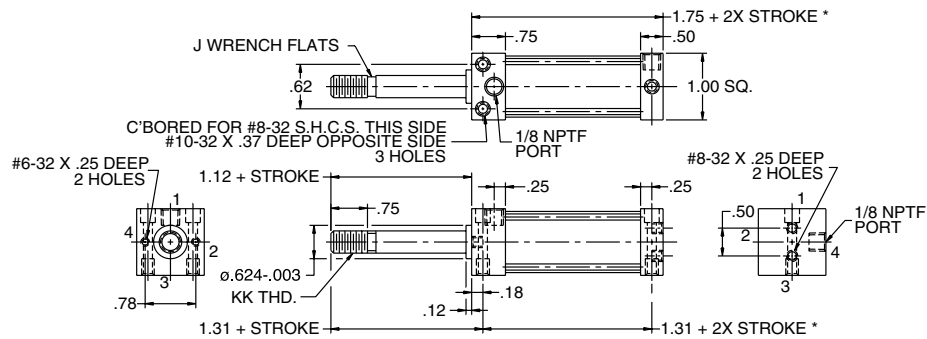
- Owen Sound, Ont. Can 519/376-2691
- Toronto, Ont. Can. 416/255-4567
- Dorval, Quebec, Can. 514/631-3995

Lin-Act

Lin-Act Series M2 Universal Midget Air Cylinder

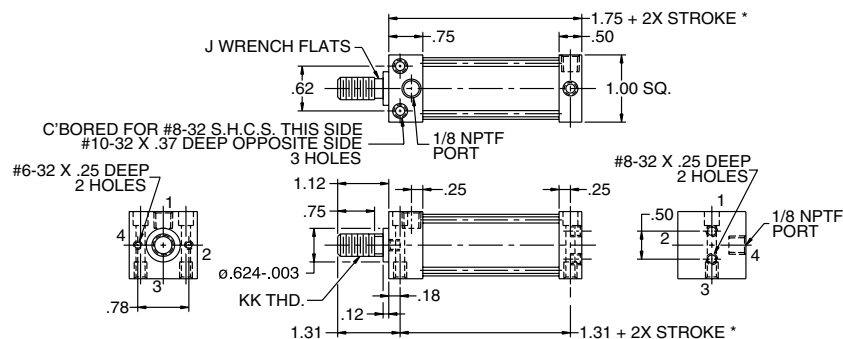
3/4" Bore
Single Acting

Basic Style UM2
Universal Mounting
Spring Extend



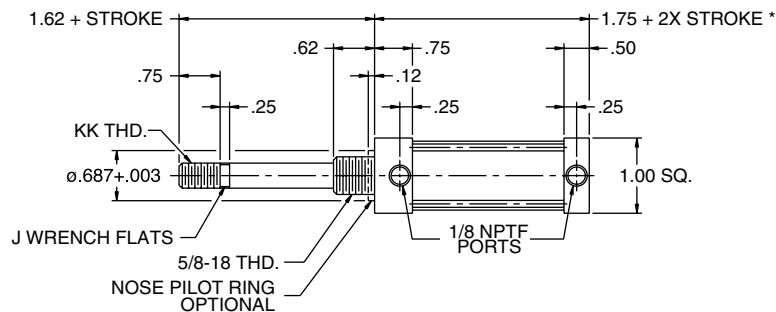
*For lipseal dimension add 1/2" to dimension shown.

Basic Style UM2
Universal Mounting
Spring Retract



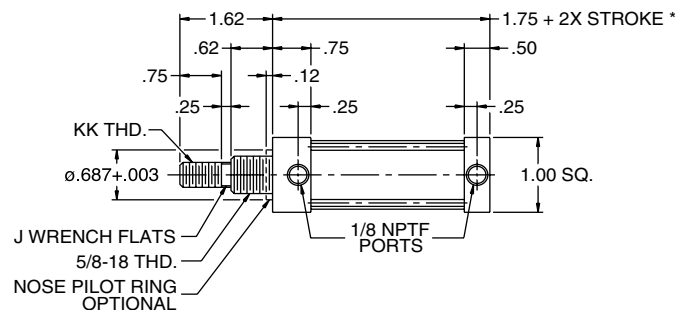
*For lipseal dimension add 1/2" to dimension shown.

Basic Style NM2
Nose Mounting
Spring Extend



*For lipseal dimension add 1/2" to dimension shown.

Basic Style NM2
Nose Mounting
Spring Retract



*For lipseal dimension add 1/2" to dimension shown.

Rod End Dimensions				
Bore	Rod		Thd. KK	
	No.	Dia.	Style 6	J
3/4"	1-Std.	1/4	1/4-20	7/32
	3-O.S.	5/16	5/16-18	1/4

Cylinder Division
500 So. Wolf Road
Des Plaines, IL 60016
847/298-2400

Regional Plants
 ■ Corona, CA
909/280-3800
 ■ Enfield, CT
860/749-2215
 ■ Atlanta, GA
770/819-3400

■ Goodland, IN
219/297-3182
 ■ Plymouth, MI
734/455-1700

■ Hillsborough, NC
919/732-9371
 ■ Akron, OH
330/253-4500
 ■ Portland, OR
503/285-0884

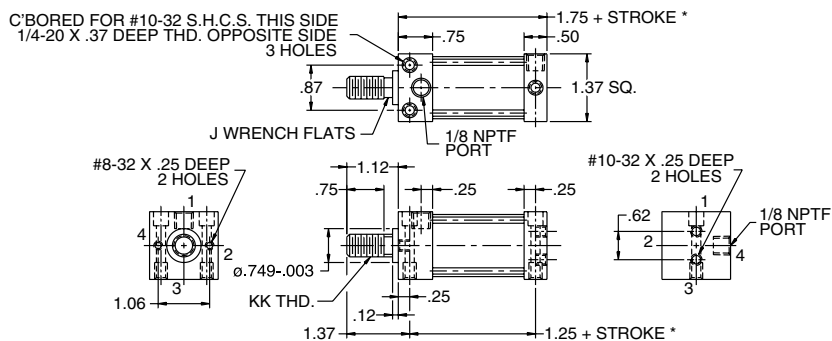
■ Owen Sound, Ont. Can
519/376-2691
 ■ Toronto, Ont. Can.
416/255-4567
 ■ Dorval, Quebec, Can.
514/631-3995

Lin-Act

**1" Bore
Double Acting**

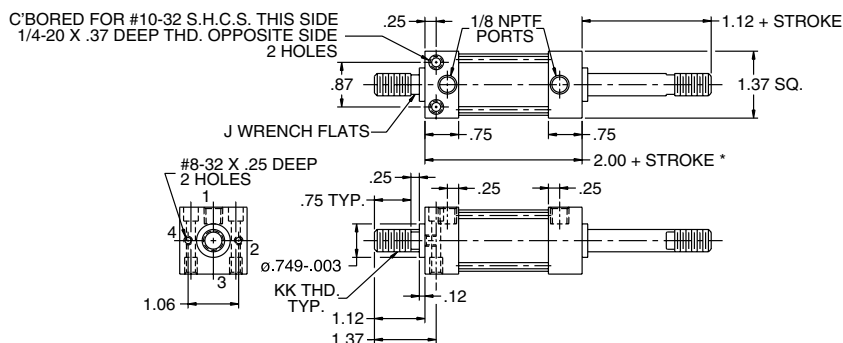
Lin-Act Series M2 Universal Midget Air Cylinder

**Basic Style UM2
Universal Mounting**



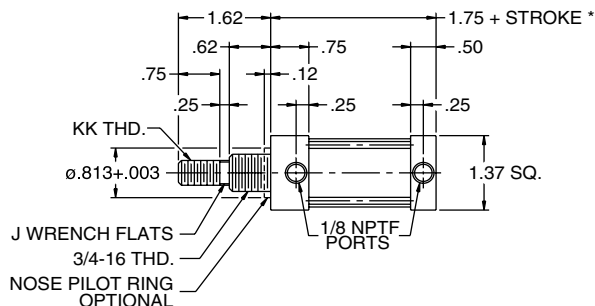
*For lipseal dimension add 1/2" to dimension shown.

**Mounting Style KUM2
Double Rod
Universal Mounting**



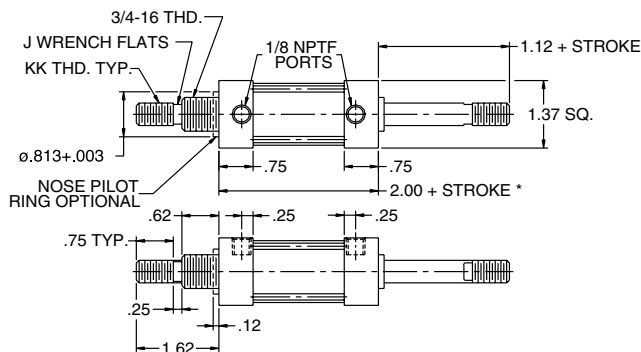
*For lipseal dimension add 1/2" to dimension shown.

**Basic Style NM2
Nose Mounting**



*For lipseal dimension add 1/2" to dimension shown.

**Mounting Style KNM2
Double Rod
Nose Mounting**



*For lipseal dimension add 1/2" to dimension shown.

Rod End Dimensions				
Bore	Rod		Thd. KK Style 6	J
	No.	Dia.		
1"	1-Std.	5/16	5/16-18	1/4
	3-O.S.	3/8	3/8-24	5/16

Cylinder Division
500 So. Wolf Road
Des Plaines, IL 60016
847/298-2400

Regional Plants

- Corona, CA 909/280-3800
- Enfield, CT 860/749-2215
- Atlanta, GA 770/819-3400

- Goodland, IN 219/297-3182
- Plymouth, MI 734/455-1700

- Hillsborough, NC 919/732-9371
- Akron, OH 330/253-4500
- Portland, OR 503/285-0884

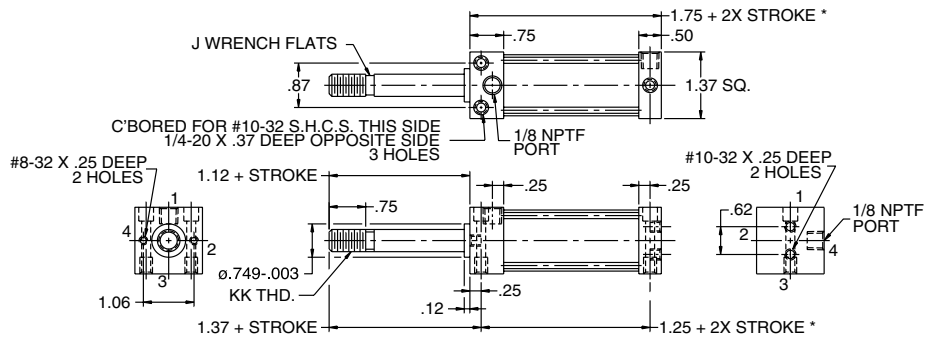
- Owen Sound, Ont. Can 519/376-2691
- Toronto, Ont. Can. 416/255-4567
- Dorval, Quebec, Can. 514/631-3995

Lin-Act

Lin-Act Series M2 Universal Midget Air Cylinder

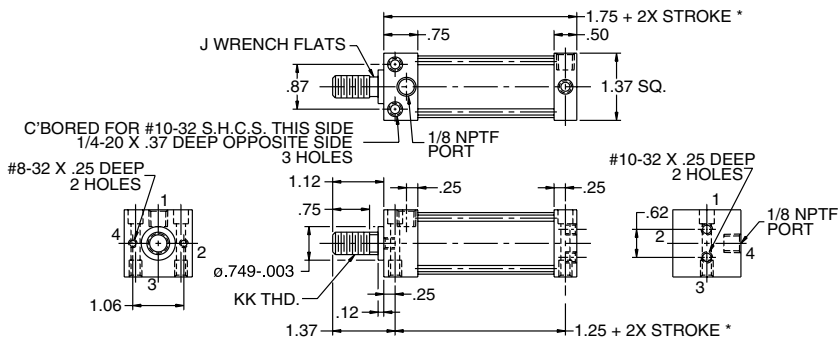
1" Bore
Single Acting

Basic Style UM2 Universal Mounting Spring Extend



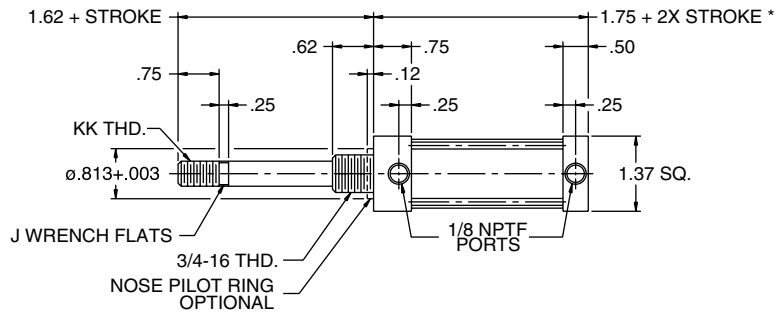
*For lipseal dimension add 1/2" to dimension shown.

Basic Style UM2 Universal Mounting Spring Retract



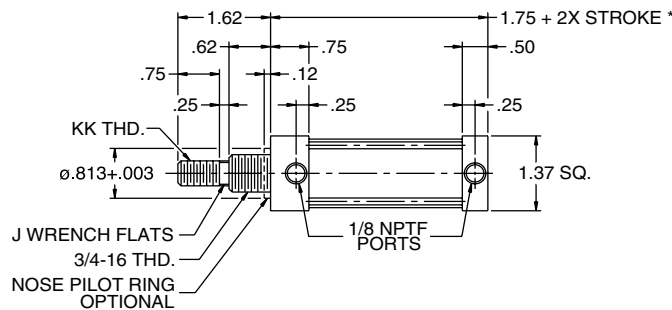
*For lipseal dimension add 1/2" to dimension shown.

Basic Style NM2 Nose Mounting Spring Extend



*For lipseal dimension add 1/2" to dimension shown.

Basic Style NM2 Nose Mounting Spring Retract



*For lipseal dimension add 1/2" to dimension shown.

Rod End Dimensions				
Bore	Rod		Thd. KK	J
	No.	Dia.	Style 6	
1"	1-Std.	5/16	5/16-18	1/4
	3-O.S.	3/8	3/8-24	

Cylinder Division
500 So. Wolf Road
Des Plaines, IL 60016
847/298-2400

Regional Plants

- Corona, CA 909/280-3800
- Enfield, CT 860/749-2215
- Atlanta, GA 770/819-3400

- Goodland, IN 219/297-3182
- Plymouth, MI 734/455-1700

- Hillsborough, NC 919/732-9371
- Akron, OH 330/253-4500
- Portland, OR 503/285-0884

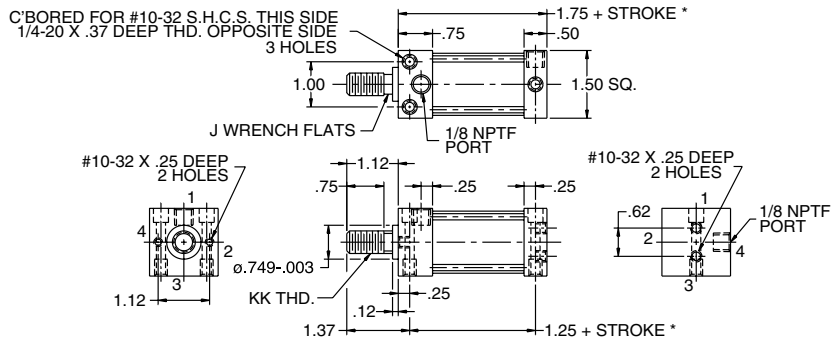
- Owen Sound, Ont. Can 519/376-2691
- Toronto, Ont. Can. 416/255-4567
- Dorval, Quebec, Can. 514/631-3995

Lin-Act

1-1/8" Bore
Double Acting

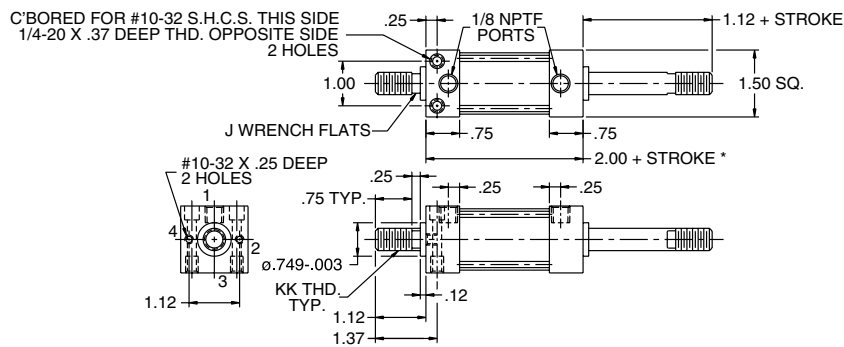
Lin-Act Series M2 Universal Midget Air Cylinder

**Basic Style UM2
Universal Mounting**



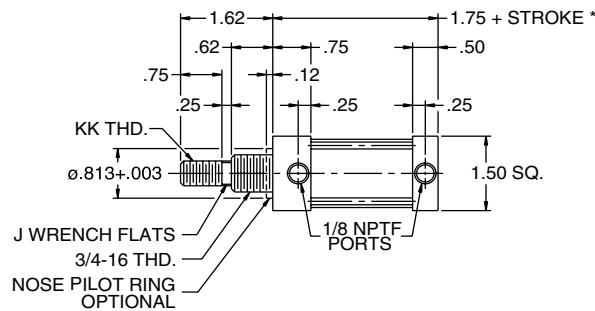
*For lipseal dimension add 1/2" to dimension shown.

**Mounting Style KUM2
Double Rod
Universal Mounting**



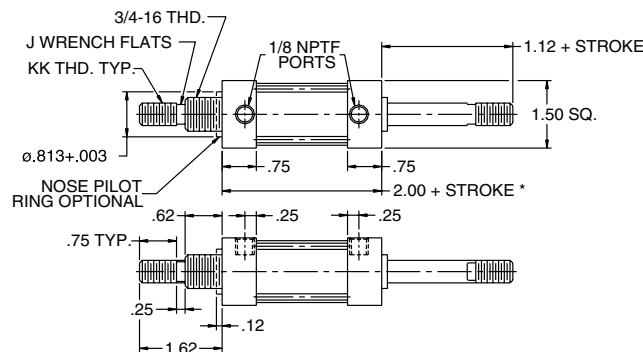
*For lipseal dimension add 1/2" to dimension shown.

**Basic Style NM2
Nose Mounting**



*For lipseal dimension add 1/2" to dimension shown.

**Mounting Style KNM2
Double Rod
Nose Mounting**



*For lipseal dimension add 1/2" to dimension shown.

Rod End Dimensions				
Bore	Rod		Thd. KK Style 6	J
	No.	Dia.		
1-1/8"	1-Std.	3/8	3/8-24	5/16
	3-O.S.	1/2	1/2-20	7/16

Cylinder Division
500 So. Wolf Road
Des Plaines, IL 60016
847/298-2400

Regional Plants

- Corona, CA 909/280-3800
- Enfield, CT 860/749-2215
- Atlanta, GA 770/819-3400

- Goodland, IN 219/297-3182
- Plymouth, MI 734/455-1700

- Hillsborough, NC 919/732-9371
- Akron, OH 330/253-4500
- Portland, OR 503/285-0884

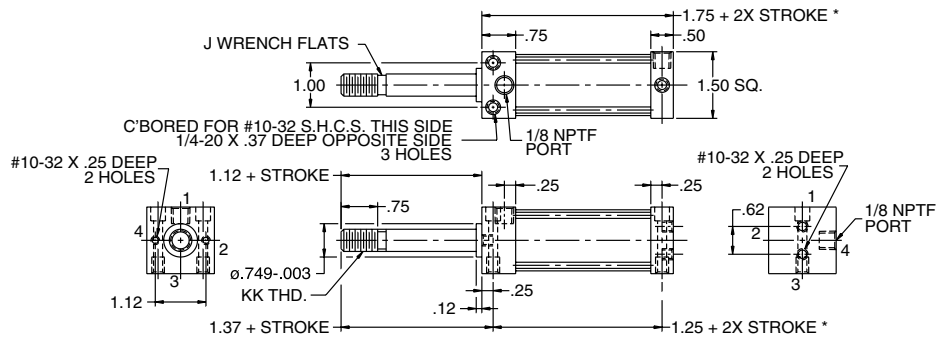
- Owen Sound, Ont. Can 519/376-2691
- Toronto, Ont. Can. 416/255-4567
- Dorval, Quebec, Can. 514/631-3995

Lin-Act

Lin-Act Series M2 Universal Midget Air Cylinder

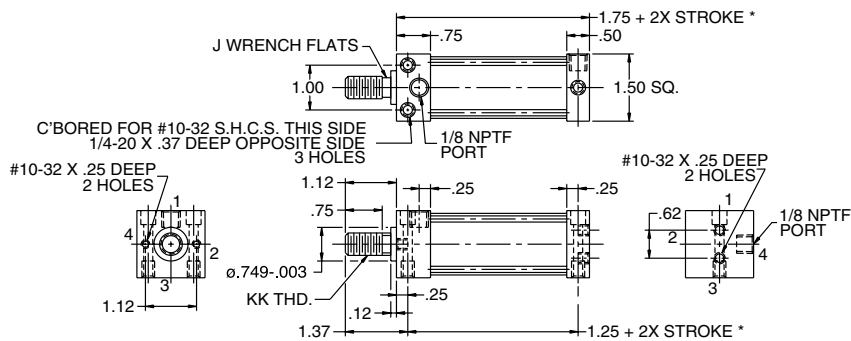
1-1/8" Bore
Single Acting

Basic Style UM2 Universal Mounting Spring Extend



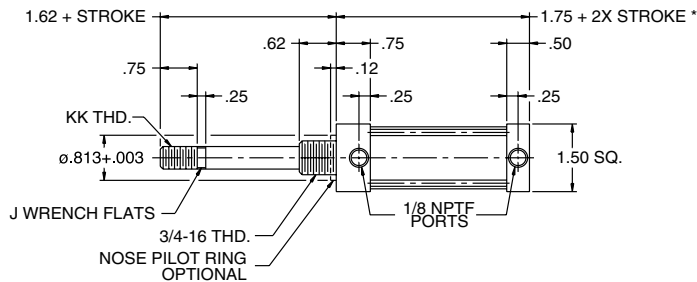
*For lipseal dimension add 1/2" to dimension shown.

Basic Style UM2 Universal Mounting Spring Retract



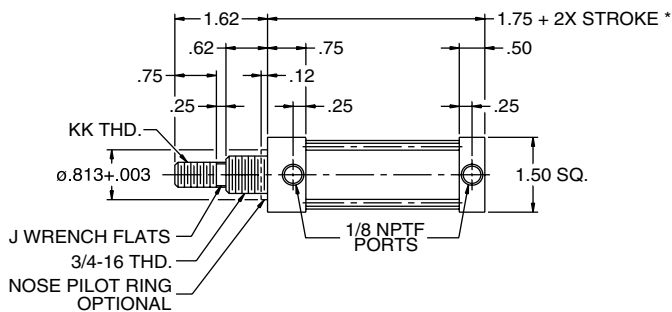
*For lipseal dimension add 1/2" to dimension shown.

Basic Style NM2 Nose Mounting Spring Extend



*For lipseal dimension add 1/2" to dimension shown.

Basic Style NM2 Nose Mounting Spring Retract



*For lipseal dimension add 1/2" to dimension shown.

Rod End Dimensions				
Bore	Rod		Thd.	J
	No.	Dia.	KK Style 6	
1-1/8"	1-Std.	3/8	3/8-24	5/16
	3-O.S.	1/2	1/2-20	7/16

Cylinder Division
500 So. Wolf Road
Des Plaines, IL 60016
847/298-2400

Regional Plants

- Corona, CA 909/280-3800
- Enfield, CT 860/749-2215
- Atlanta, GA 770/819-3400

- Goodland, IN 219/297-3182
- Plymouth, MI 734/455-1700

- Hillsborough, NC 919/732-9371
- Akron, OH 330/253-4500
- Portland, OR 503/285-0884

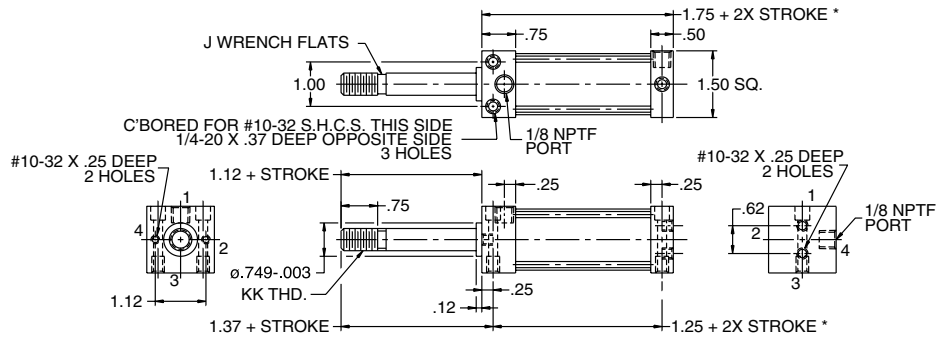
- Owen Sound, Ont. Can 519/376-2691
- Toronto, Ont. Can. 416/255-4567
- Dorval, Quebec, Can. 514/631-3995

Lin-Act

Lin-Act Series M2 Universal Midget Air Cylinder

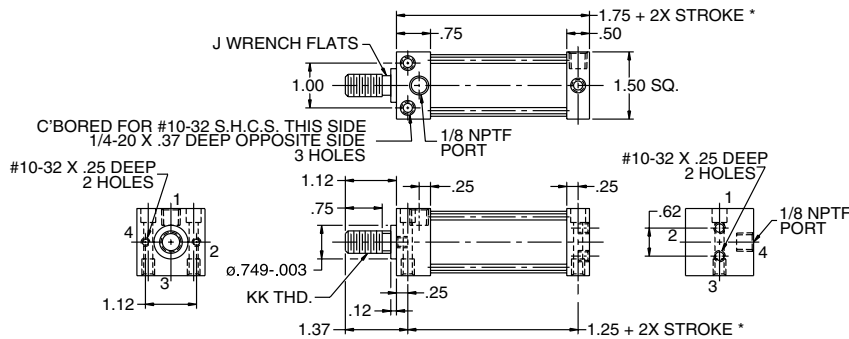
1-1/4" Bore
Single Acting

Basic Style UM2 Universal Mounting Spring Extend



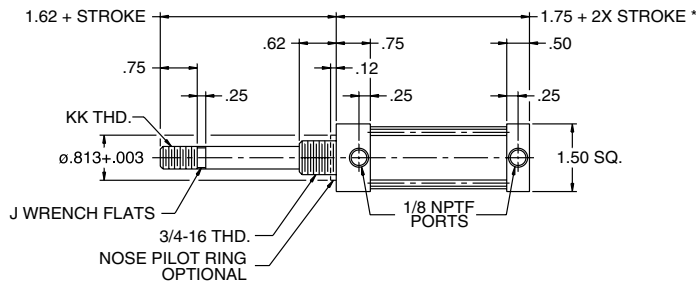
*For lipseal dimension add 1/2" to dimension shown.

Basic Style UM2 Universal Mounting Spring Retract



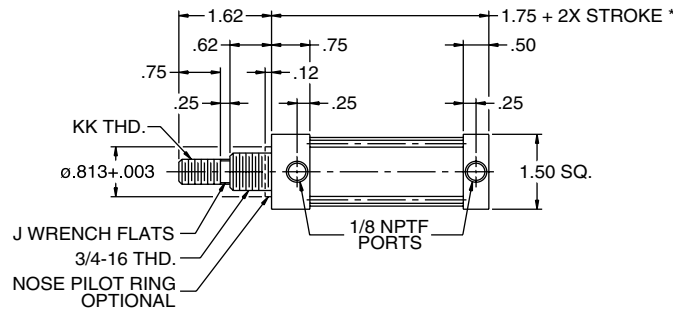
*For lipseal dimension add 1/2" to dimension shown.

Basic Style NM2 Nose Mounting Spring Extend



*For lipseal dimension add 1/2" to dimension shown.

Basic Style NM2 Nose Mounting Spring Retract



Rod End Dimensions				
Bore	Rod		Thd.	J
	No.	Dia.	KK Style 6	
1-1/4"	1-Std.	3/8	3/8-24	5/16
	3-O.S.	1/2	1/2-20	7/16

NOTE: OVERSIZE RODS SHOWN ARE MAXIMUM SIZE ALLOWABLE.

*For lipseal dimension add 1/2" to dimension shown.

Cylinder Division
500 So. Wolf Road
Des Plaines, IL 60016
847/298-2400

Regional Plants

- Corona, CA 909/280-3800
- Enfield, CT 860/749-2215
- Atlanta, GA 770/819-3400

- Goodland, IN 219/297-3182
- Plymouth, MI 734/455-1700

- Hillsborough, NC 919/732-9371
- Akron, OH 330/253-4500
- Portland, OR 503/285-0884

- Owen Sound, Ont. Can 519/376-2691
- Toronto, Ont. Can. 416/255-4567
- Dorval, Quebec, Can. 514/631-3995

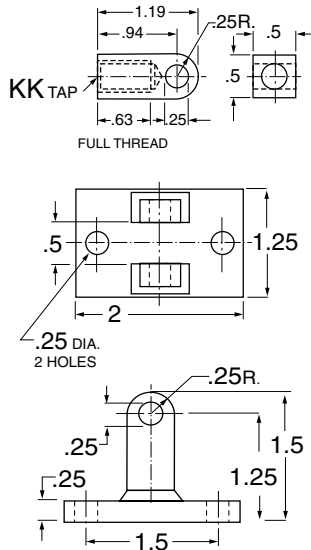
Lin-Act

**Mounting Kits
Accessories
Repair Kits**

Lin-Act Series M2 Universal Midget Air Cylinder

Bore	Rod		Rod Eye	Clevis Bracket	Nose Ring
	No.	Dia.			
3/4	1-STD.	1/4	0179270000	0179300000	0179320000
	3-O.S.	5/16	0179280000		
1	1-STD.	5/16	0179280000	0179300000	0179330000
	3-O.S.	3/8	0179290000		
1-1/8	1-STD.	3/8	0179290000	0179300000	0179330000
	3-O.S.	1/2	-		
1-1/4	1-STD.	3/8	0179290000	0179300000	0179330000
	3-O.S.	1/2	-		

Bore	Rod		B Clevis	H Flange	J Flange
	No.	Dia.			
3/4	1-STD.	1/4	0179180000	0179210000	0179240000
	3-O.S.	5/16			
1	1-STD.	5/16	0179190000	0179220000	0179250000
	3-O.S.	3/8			
1-1/8	1-STD.	3/8	0179190000	0179230000	0179260000
	3-O.S.	1/2			
1-1/4	1-STD.	3/8	0179190000	0179230000	0179260000
	3-O.S.	1/2			



Accessories

Rod Eye (Knuckle)

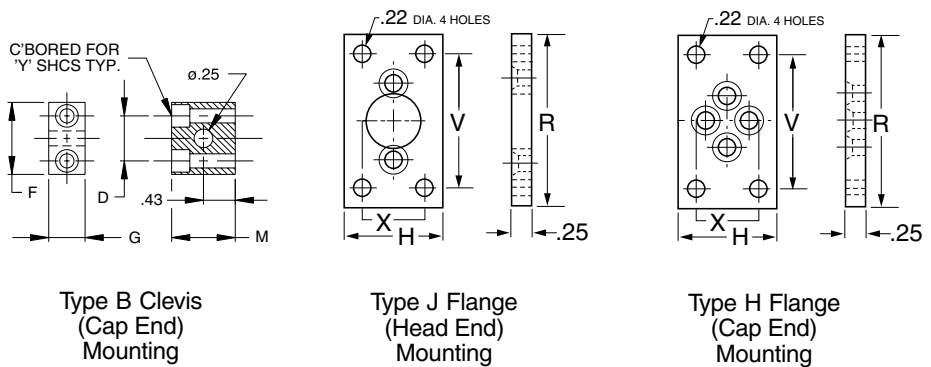
Rod Eyes (Rod End Knuckles) are available to fit standard Universal Midget Cylinder Rod Ends. To order, specify part name and number.

Clevis Bracket

Clevis Brackets to fit the Type B Clevis Mounting Attachment and also the Rod Eyes are available. Pivot pin is furnished with the bracket. To order, specify part name and number.

Note: Mounting attachments or accessories may be ordered separately for use with Series "M2" cylinders. Specify by part name and number.

Mounting Kit Dimensions				
Symbol	Bore Size			
	.75	1.00	1.12	1.25
D	.50	.62	.62	.62
F	.81	1.00	1.00	1.00
G	.37	.50	.50	.50
H	1.00	1.38	1.50	1.50
M	.75	.87	.87	.87
R	2.00	2.37	2.50	2.50
V	1.50	1.87	2.00	2.00
X	.50	.87	1.00	1.00
Y	8-32	10-32	10-32	10-32



Seal Kits

Part		Style	Rod No.	3/4" Bore Part No.	1" Bore Part No.	1 1/8" Bore Part No.	1 1/4" Bore Part No.
Piston Seal	Standard	O-Ring	All	0104030048	0104030100	0104030108	0104030116
		Lipseal	All	0146230000	0141800000	0831760001	0142080000
	Fluorocarbon	O-Ring	All	0100090048	0100090100	0100090108	0100090116
		Lipseal	All	0490590050	0478860001	0831170001	0490590100
Rod Seal	Standard	All	1	0104030024	0104030028	0104030032	0104030032
		All	3	0104030028	0104030032	0477380002	0477380002
		All	3	0100090024	0100090028	0100090032	0100090032
	Fluorocarbon	All	1	0100090028	0100090032	0100240002	0100240002
		O-Ring	1	SK0075S025	SK0100S031	SK0112S037	SK0125M037
		Lipseal	3	SK0075S031	SK0100S037	SK0112S050	SK0125M050
Seal Kit includes End Seals, Piston Seals, Rod Seals	Standard	O-Ring	1	SKL075S025	SKL100S031	SKL112S037	SKL125M037
		Lipseal	3	SKL075S031	SKL100S037	SKL112S050	SKL125M050
		O-Ring	1	SK0075SV25	SK0100SV31	SK0112SV37	SK0125MV37
	Fluorocarbon	O-Ring	3	SK0075SV31	SK0100SV37	SK0125SV50	SK0125MV50
		Lipseal	1	SKL075SV25	SKL100SV31	SKL112SV37	SKL125MV37
		Lipseal	3	SKL075SV31	SKL100SV37	SKL112SV50	SKL125MV50

Right Angle Flow Controls

Available mounted to the cylinder or packaged with your cylinder.

#1 – Brass with threaded NPT threads.

#2 – Presto-Lok with an internal grab ring for use on plastic or soft metal piping.

Model #	Thread	Tube Size
32510125	1/8 NPT	-
L073910012	1/8 NPT Includes Barbed Fitting	-
32511215	1/8 NPT	5/32
32511225	1/8 NPT	1/4

Cylinder Division
500 So. Wolf Road
Des Plaines, IL 60016
847/298-2400

Regional Plants
■ Corona, CA
909/280-3800
■ Enfield, CT
860/749-2215
■ Atlanta, GA
770/819-3400

■ Goodland, IN
219/297-3182
■ Plymouth, MI
734/455-1700

■ Hillsborough, NC
919/732-9371
■ Akron, OH
330/253-4500
■ Portland, OR
503/285-0884

■ Owen Sound, Ont. Can
519/376-2691
■ Toronto, Ont. Can.
416/255-4567
■ Dorval, Quebec, Can.
514/631-3995

Lin-Act

Lin-Act Series M2 Universal Midget Air Cylinder

Model Numbers
Parts Identification

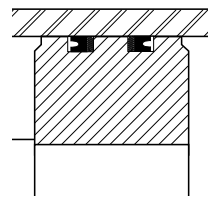
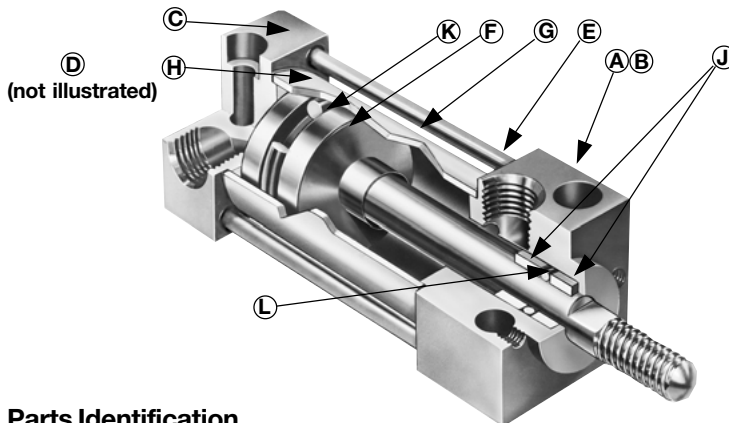
Model Numbers

Each Lin-Act Series "M2" Cylinder is assigned a model number which, together with the bore size and stroke, is a coded description of the cylinder. The outline below shows

all possible elements of such a model number and explains the use of each. To order Series "M2" Cylinders, specify Bore Size, Model Number and Stroke.

	BORE SIZE	CUSHION HEAD END	DOUBLE ROD	MOUNTING STYLE	SERIES	PISTON	PORTS	SEALS	SPRING	SPECIAL FEATURES	ROD DIA. NO.	ROD** END THREAD	CUSHION CAP END	STROKE
	E X A M P L E	1 1/8"	C*	K	U	M2	L	U	V		S	1	6	C*
	Specify: 3/4", 1", 1 1/8" or 1 1/4"	Used only if Cushion Head End is required	Used only if Double Rod Cylinder is required	Specify: U = Universal N = Nose Mounted	Symbol used on all Series M2 Cylinders	Used only if Lipseal Type Piston is required	Specify: U = N.P.T.F.	Leave blank for Buna-N. Specify: V for Fluoro-carbon	Leave blank for cylinder without spring. Specify E = Spring Extend R = Spring Return	Used only if special feature is required (Specify) Note: Do not use Symbol "S" for Rod End Modifications	Specify: #1 - Std. #3 - Over Size	Specify: #6 - Std. #3 - Special and specify KK, A and LAF Dimensions	Used only if Cushion Cap End is required	Specify in inches Show Symbol "X" just ahead of Stroke Length.

*Note: Cushion will increase cylinder length by 1/2" each end and adds 1/2" to overall length.



Optional Feature
Lipseal® Pistons
Add 1/2" to overall length
all bore sizes.

NOTE: — Mounting attachments and accessories must be ordered separately. See page 12 for part numbers.

**On a double-end rod cylinder where the two rod ends will be different, be sure to state clearly which rod end is to go at which end of the cylinder.

Parts Identification

Symbol	Part Name	No. Req'd.	3/4" Bore Part No.	1" Bore Part No.	1 1/8" Bore Part No.	1 1/4" Bore Part No.
A	Head - Style NM2	1	0179600000	0179610000	0179620000	0562310000
B	Head - Style UM2	1	0179630000	0179640000	0179650000	0562320000
C	Cap - All Styles	1	0179660000	0179670000	0179680000	0562330000
D	Tie Rod Nut	4	0179690000	0179700000	0179710000	0179710000
E	Tie Rod	4	0179720000	0179730000	0179740000	0179740000
F	Piston and Rod Assembly	1	0179750000	0179760000	0179770000	0826460000
G	Cylinder Body	1	0179780000	0179790000	0179800000	0826470000
H	Cylinder Body Gasket	2	0179810000	0179820000	0179830000	0826480000
J	Rod Bushing	2	0179840000	0179850000	0179860000	0179860000
K	Piston Seal	1	010403-0048	010403-0100	010403-0108	010403-0116
L	Rod Seal	1	010403-0024	010403-0028	010403-0032	010403-0032
H, K and L	Seal Kit	1	SK0075S025	SK0100S031	SK0112S037	SK0125S037

NOTE: — Consult factory for oversize rod, lipseal piston, springs, spring spacers and double rod end cylinder parts.

⚠ WARNING

FAILURE OR IMPROPER SELECTION OR IMPROPER USE OF THE PRODUCTS AND/OR SYSTEMS DESCRIBED HEREIN OR RELATED ITEMS CAN CAUSE DEATH, PERSONAL INJURY AND PROPERTY DAMAGE.

This document and other information from the Company, its subsidiaries and authorized distributors provide product and/or system options for further investigation by users having expertise. It is important that you analyze all aspects of your application, including consequences of any failure and review the information concerning the product or system in the current product catalog. Due to the variety of operating conditions and applications for these products or systems, the user, through its own analysis and testing, is solely responsible for making the final selection of the products and systems and assuring that all performance, safety and warning requirements of the application are met.

The products described herein, including without limitation, product features, specifications, designs, availability and pricing, are subject to change by the Company and its related companies at any time without notice.

Cylinder Division
500 So. Wolf Road
Des Plaines, IL 60016
847/298-2400

Regional Plants
■ Corona, CA
909/280-3800
■ Enfield, CT
860/749-2215
■ Atlanta, GA
770/819-3400

■ Goodland, IN
219/297-3182
■ Plymouth, MI
734/455-1700

■ Hillsborough, NC
919/732-9371
■ Akron, OH
330/253-4500
■ Portland, OR
503/285-0884

■ Owen Sound, Ont. Can
519/376-2691
■ Toronto, Ont. Can.
416/255-4567
■ Dorval, Quebec, Can.
514/631-3995

Lin-Act



Lin-Act

Lin-Act
500 South Wolf Road
Des Plaines, IL 60016 USA
Tel: (847) 298-2400
Fax: (800) 892-1008

Lin-Act
1000 6th Street East at 9th
Owen Sound, Ontario
Canada N4K 5P1
Tel: (519) 376-2691
Fax: (519) 371-2664