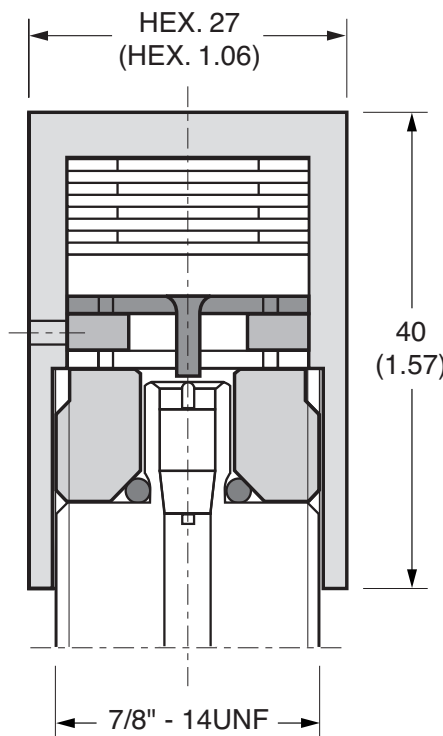
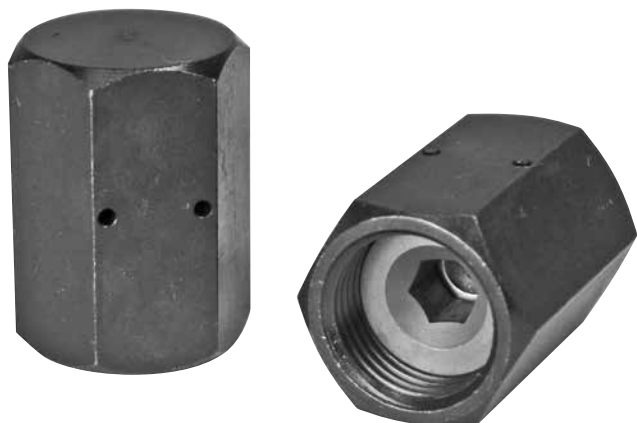


## Thermal Fuse Caps



### Description

HYDAC Thermal Fuse Caps are safety devices that automatically bleed accumulator gas pressure in the event of a fire. These devices are installed on the HYDAC version 4 gas valve. When the critical temperature (320°F to 340°F) is reached, a support ring melts, allowing for the spring to depress the gas valve core.

### Applications

HYDAC Thermal Fuse Caps can be applied as a safety measure on any HYDAC accumulator with a Version 4 Gas Valve. Application of these devices may result in a reduction in insurance premium (*check with provider*).

### Installation

Simply remove and discard the standard Gas Valve Protection Cap and Valve Seal Cap. Screw on the Thermal Fuse Cap and torque to 30 N-m (22 lb-ft.)

### Operation

Once installed, the thermal fuse cap requires no attention. In the event of a fire, the support ring will melt and the spring will expand, causing the pin to depress the gas valve core. The melted support and gas will then exit through the gas bleed ports in the side of the thermal fuse cap.

### Model Code

There are no options for this product, therefore a model code is not given.

**Order Part No. 00363501**

### Technical Data

#### Maximum Working Pressure

- 5000 psi (345 bar)

#### Maximum Working Temperature

- 200°F (93.5°C)

#### Fusing Temperature

- 320 to 340°F (160 to 171°C)

