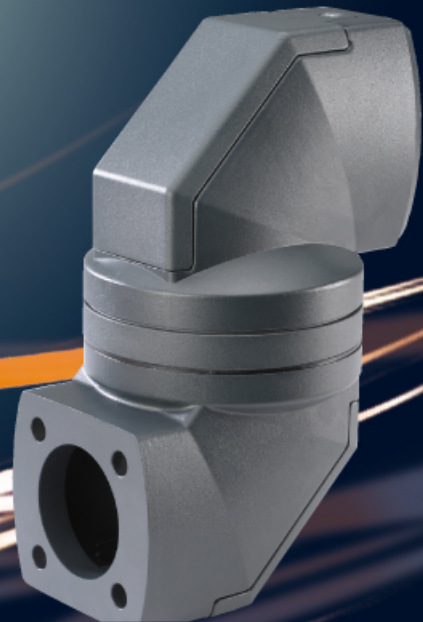


# HLT Pendant Arm System

Designed specifically for the human-machine interface, the hāwa-system, with its vast variety of components, guarantees optimum configuration possibilities - with design and functionality going hand in hand perfectly.

## Technical Parameters

- Robust pendant arm system out of lightweight extruded aluminum profile offers high flexibility
- Section tube 62 x 85 mm (2.44" x 3.35")
- Load up to 175 lbs at 40 inches (80 kg at 1 m)
- Aluminum profile length up to 2,000 mm (approx. 6.5')
- Tilt & angle correction
- Color: Aluminum profile similar to RAL 7035 structured (light gray)  
Components similar to RAL 7016 structured (anthracite gray)
- High flexibility
- Connections direct or with housing-console per VESA-Standard
- Connections to commercially available coupling holes available with adapter plates



- High carrying capacity of pendant arm with or without joints
- Protection class IP54 DIN EN 60529 / NEMA 12
- Material: Extruded aluminum tube and cast aluminum
- The system offers a continuous, load-dependent incline variation

**“One source for control cabinet, pendant arm, and enclosure”**



# HLT Pendant Arm System

## HLT Lift S

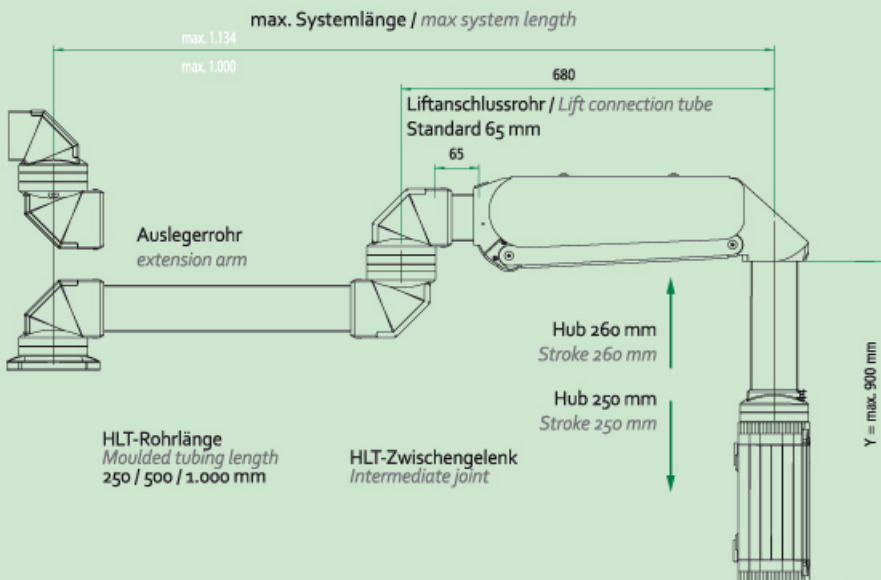


### Product Description

- Lift for control boxes with internal cable ducting system; continuously adjustable
- Automatic locking of vertical stroke in each position
- Unlocking by use of push button (push button normally is integrated in operator panel)
- Stroke limiter adjustable upwards in three steps (0°, 20°, 40°), and downwards continuously
- Designed to connect to the HLT Pendant Arm System
- Extension arm length: 548 mm / 21.56 inch
- Stroke upwards: 260 mm / 10.24 inch
- Stroke downwards: 250 mm / 9.84 inch
- Max. cable duct: 43 mm x 16 mm / 1.69 x 0.63 inch
- Standard color: RAL 7016 / RAL 7035 (different colors on request)

Description	Order No.
HLT Lift S	7595-760x-xx-01

### Technical Information



Weight	max. System length	
	without joint	with joint
5-10 kg	2000 mm 78.74 inch	2000 mm 78.74 inch
7-13 kg	2000 mm 78.74 inch	2000 mm 78.74 inch
13-21 kg	2000 mm 78.74 inch	2000 mm 78.74 inch
18-28 kg	2000 mm 78.74 inch	1800 mm 70.86 inch
26-37 kg	1700 mm 66.92 inch	1500 mm 59.05 inch
36-52 kg	1300 mm 51.18 inch	1100 mm 43.30 inch
45-60 kg	1150 mm 45.27 inch	1000 mm 39.37 inch

## Order No.

Configure:

- Choose your design:
    - 1 = Standard hanging
    - 2 = Desk mounting
    - 3 = Standard hanging; stroke limiter
    - 4 = Desk mounting; stroke limiter
- e.g. 7595-7601-xx-01

- Choose length of lift connection tube
    - 1 = 65 mm Standard
    - 2 = 100 mm
    - 3 = 200 mm
    - 4 = 300 mm
    - 5 = 400 mm
    - 6 = 500 mm
- e.g. 7595-7601-1x-01

- Choose your loading capacity:
    - 1 = 5-10 kg
    - 2 = 7-13 kg
    - 3 = 13-21 kg
    - 4 = 18-28 kg
    - 5 = 26-37 kg
    - 6 = 36-52 kg
    - 7 = 45-60 kg
- e.g. 7595-7601-11-01

## HLT Lift L

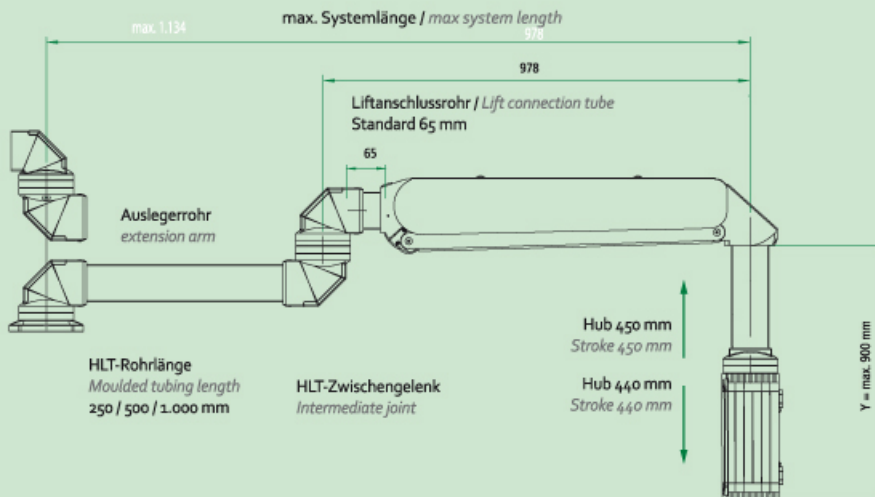


### Product Description

- Lift for control boxes with internal cable ducting system; continuously adjustable
- Automatic locking of vertical stroke in each position
- Unlocking by use of push button (push button normally is integrated in operator panel)
- Stroke limiter adjustable continuously upwards/downwards
- Designed to connect to the HLT Pendant Arm System
- Extension arm length: 846 mm / 33.31 inch
- Stroke upwards: 450 mm / 17.71 inch
- Stroke downwards: 440 mm / 17.32 inch
- Max. cable duct: 43 mm x 16 mm / 1.69 x 0.63 inch
- Standard color: RAL 7016 / RAL 7035 (different colors on request)

Description	Order No.
HLT Lift L	7595-768x-xx-01

### Technical Information



Weight	max. System length	
	without joint	with joint
5-10 kg	2000 mm 78.74 inch	2000 mm 78.74 inch
7-13 kg	2000 mm 78.74 inch	2000 mm 78.74 inch
13-21 kg	2000 mm 78.74 inch	2000 mm 78.74 inch
18-28 kg	1900 mm 74.80 inch	1650 mm 64.96 inch
26-37 kg	1600 mm 62.99 inch	1400 mm 55.11 inch
36-52 kg	1200 mm 47.24 inch	1050 mm 41.33 inch
45-60 kg	1000 mm 39.37 inch	950 mm 37.40 inch

## Order No.

Configure:

- Choose your design:
    - 1 = Standard hanging
    - 2 = Desk mounting
    - 3 = Standard hanging; stroke limiter
    - 4 = Desk mounting; stroke limiter
- e.g. 7595-7601-xx-01

• Choose length of lift connection tube

- 1 = 65 mm Standard
  - 2 = 100 mm
  - 3 = 200 mm
  - 4 = 300 mm
  - 5 = 400 mm
  - 6 = 500 mm
- e.g. 7595-7601-1x-01

• Choose your loading capacity:

- 1 = 5-10 kg
  - 2 = 7-13 kg
  - 3 = 13-21 kg
  - 4 = 18-28 kg
  - 5 = 26-37 kg
  - 6 = 36-52 kg
  - 7 = 45-60 kg
- e.g. 7595-7681-11-01

# HLT Pendant Arm System

## HLT Set-up Joint



### Product Description

- For horizontal swinging of pendant arm
- Variable turning restrictions in 30°-increments (Factory set: 150° / 150°)
- Upside down installation possible
- Tilt & angle correction
- Cover detachable for easy installation
- Color: Similar RAL 7016 structured (anthracite gray)

### Technical Data

Further technical information → below

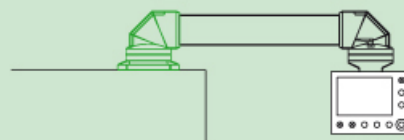
### Note

- \* Socket eap screw

By changing the position, the swivel range can be adjusted in 30° increments.

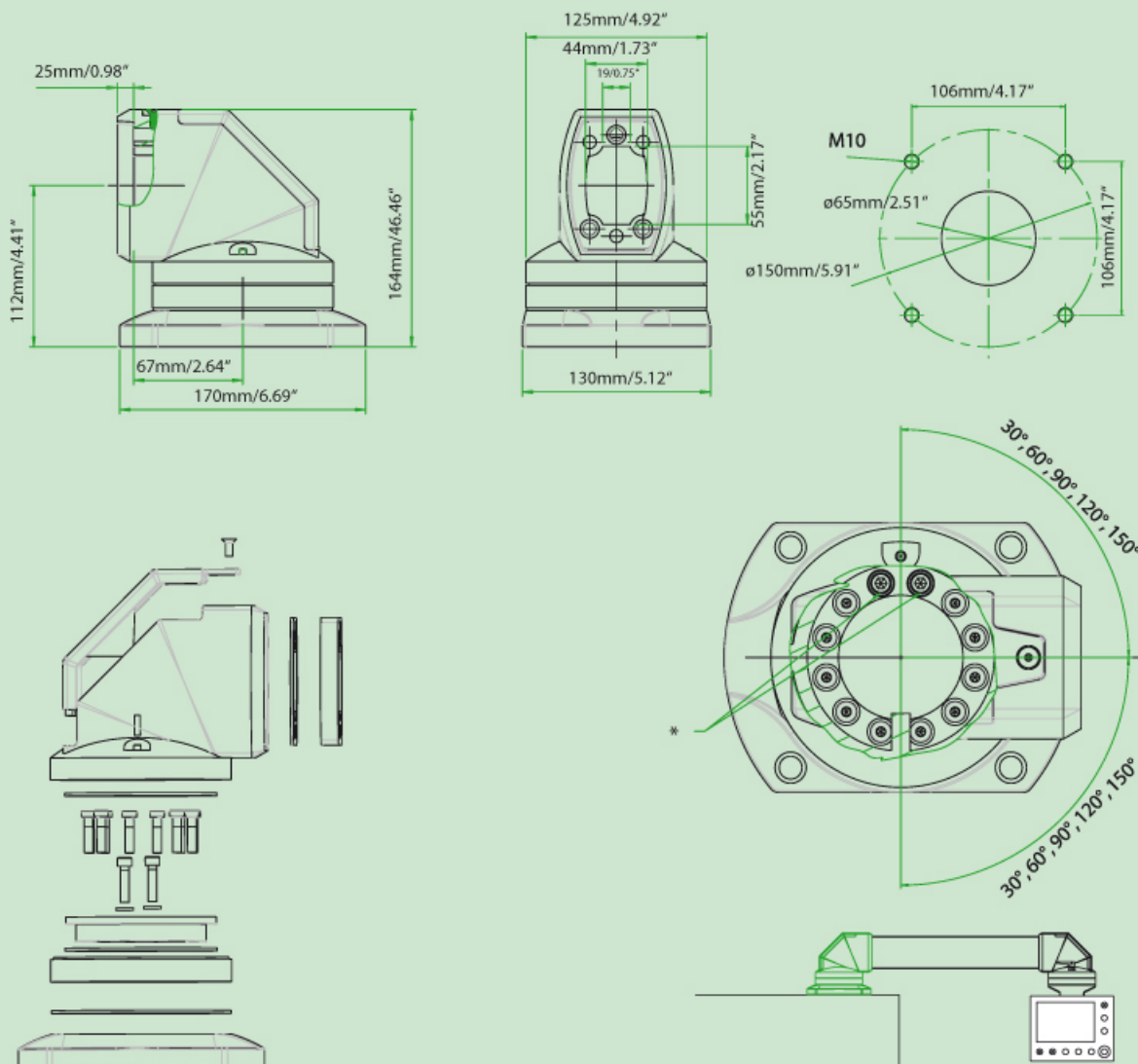
### Accessories

- Light adapter → page 24



Description	Weight		Order No.
	kg	lbs	
HLT Set-up Joint	3.2	7.06	7595-7401-01-01

### Technical Information



## HLT Wall Joint (horizontal)



### Product Description

- For horizontal swinging of pendant arm
- Variable truning restrictions in 30°-increments (Factory set: 150° / 150°)
- Upside down installation possible
- Tilt & angle correction
- Cover detachable for easy installation
- Color: Similar RAS 7016 structured (anthracite gray)

### Technical Data

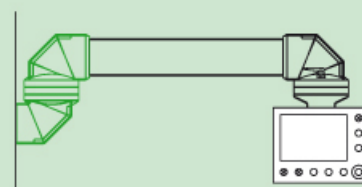
Further technical information → below

### Note

\* Socket eap screw  
By changing the position, the swivel range can be adjusted in 30° increments.

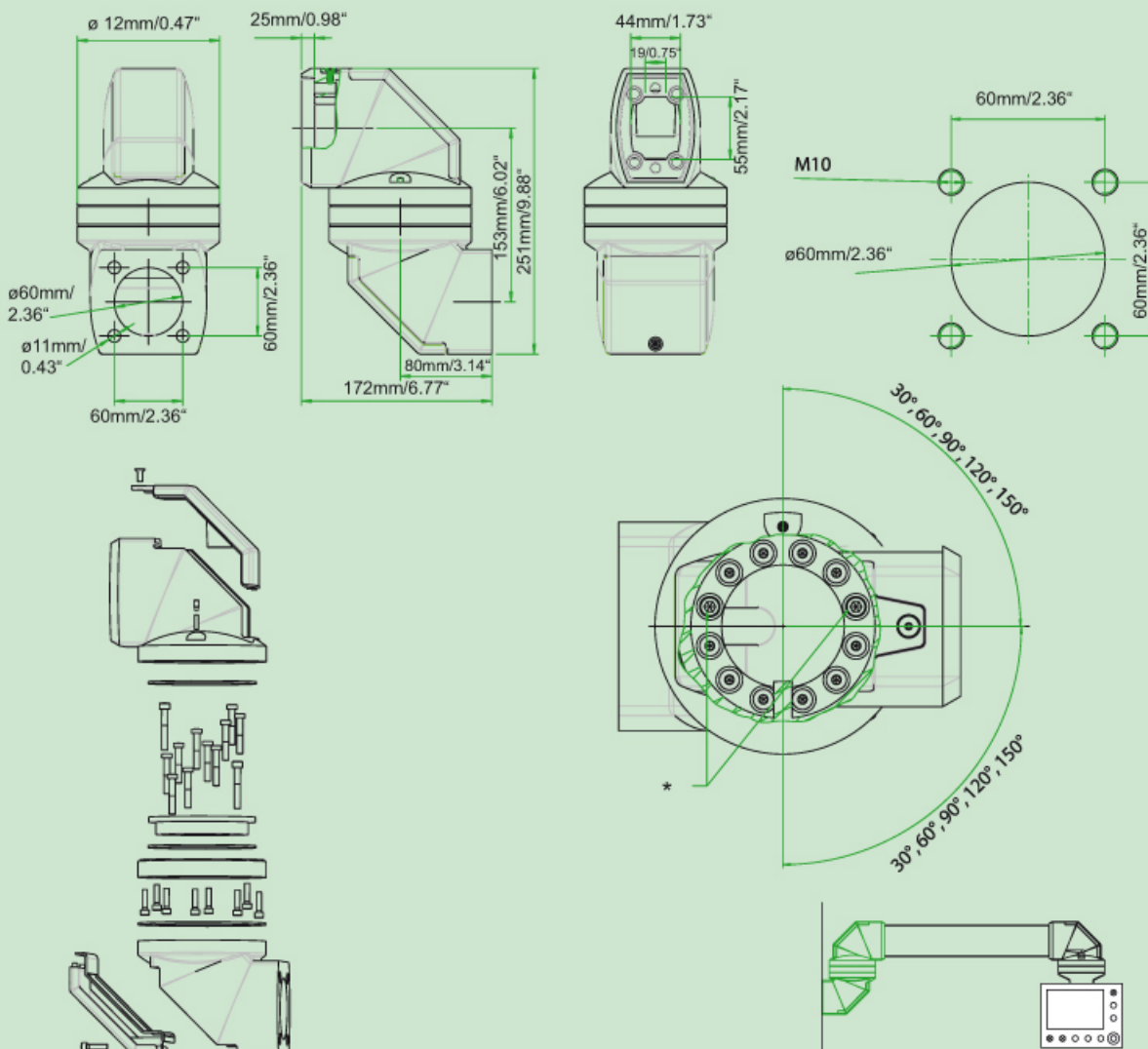
### Accessories

- Light adapter → page 24



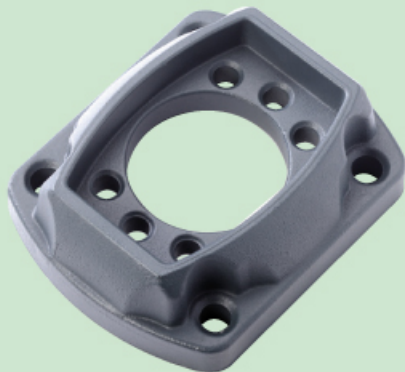
Description	Weight		Order No.
	kg	lbs	
HLT Wall Joint (horizontal)	4.1	9.04	7595-7401-02-01

### Technical Information



# HLT Pendant Arm System

## HLT Base Bracket / Wall Flange

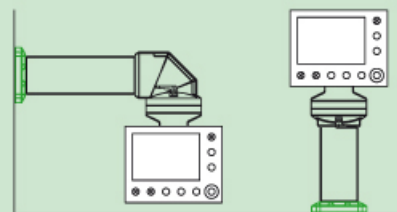


### Product Description

- For connection of aluminum profile to vertical or horizontal surfaces
- Tilt & angle correction
- Cover detachable for easy installation
- Color: Similar RAL 7016 structured (anthracite gray)

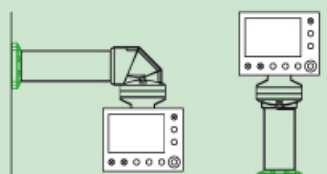
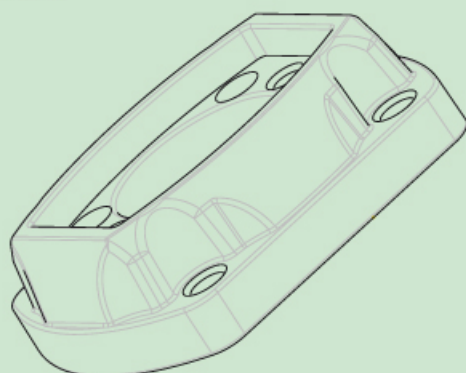
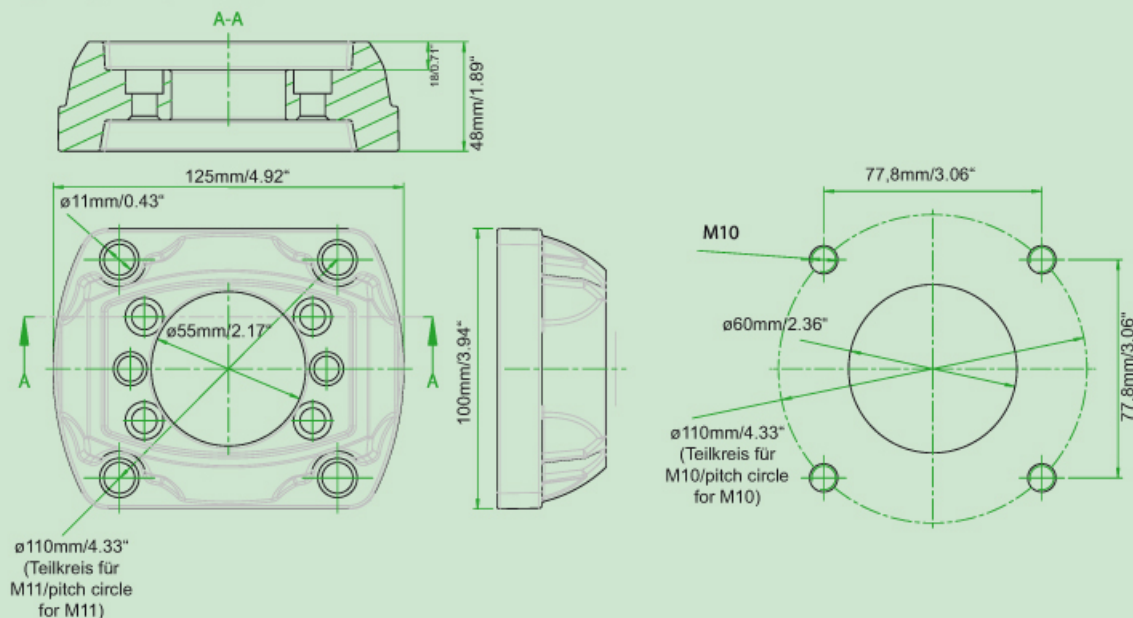
### Technical Data

Further technical information → below



Description	Weight		Order No.
	kg	lbs	
<b>HLT Base Bracket / Wall Flange</b>	0.6	1.32	<b>7595-7401-06-01</b>

### Technical Information



## HLT Intermediate Joint



### Product Description

- For connection of two aluminum profiles and horizontal swinging of pendant arm
- Variable turning restrictions in 30°-increments (Factory set: 150° / 150°)
- Upside down installation possible
- Tilt & angle correction
- Cover detachable for easy installation
- Color: Similar RAL 7016 structured (anthracite gray)

### Technical Data

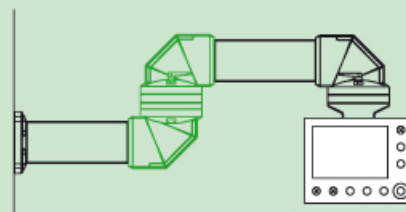
Further technical information → below

### Note

\* Socket cap screw  
By changing the position, the swivel range can be adjusted in 30° increments.

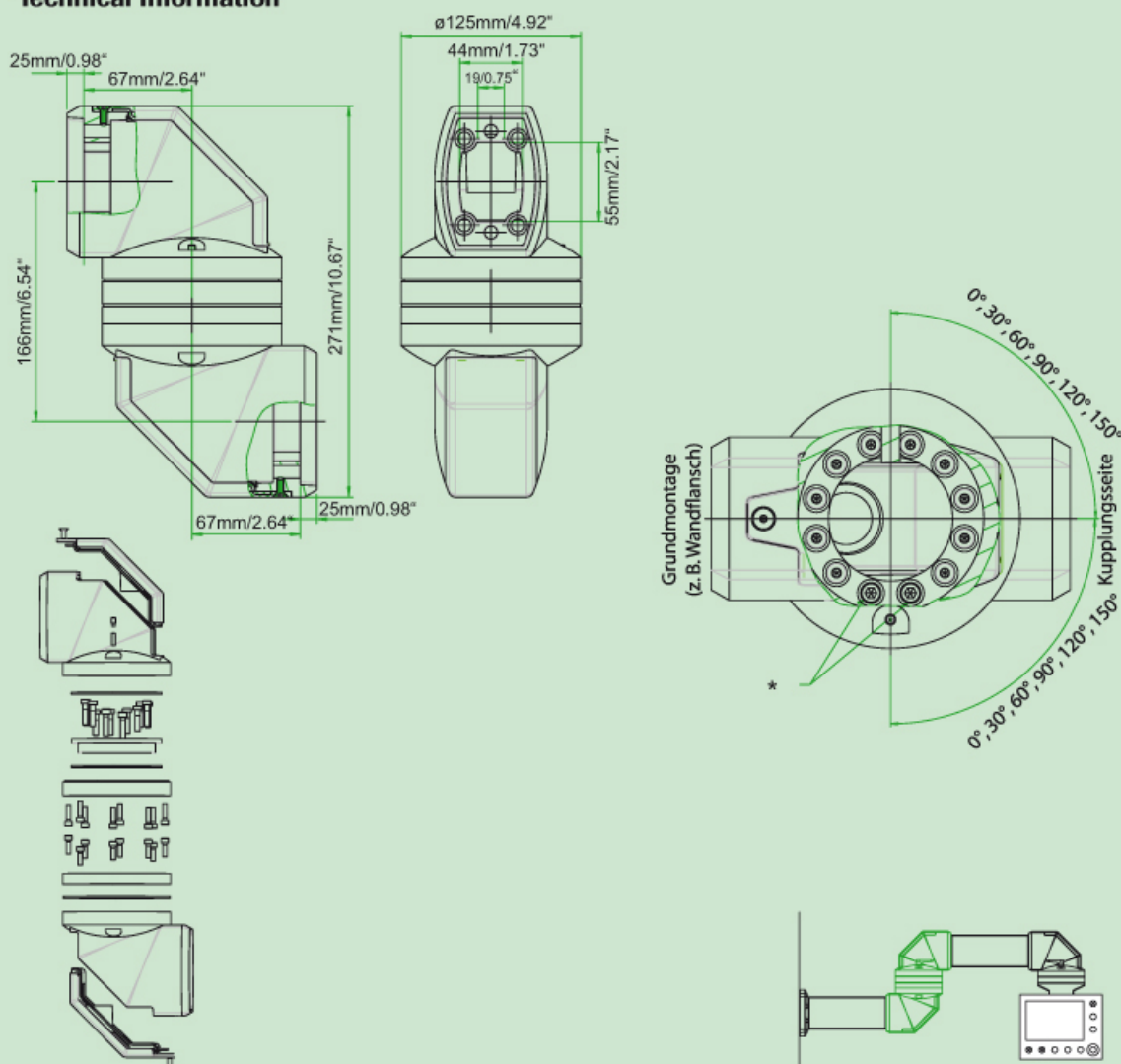
### Accessories

- Light adapter → page 24



Description	Weight		Order No.
	kg	lbs	
HLT Intermediate Joint	4.9	10.8	7595-7401-03-01

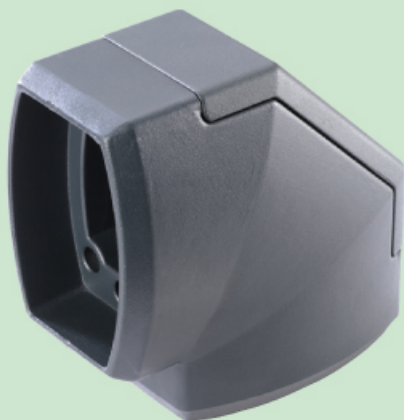
### Technical Information





# HLT Pendant Arm System

## HLT Elbow



### Product Description

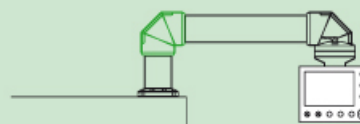
- For connection of one horizontal and one vertical aluminum profile
- Cover detachable for easy installation
- Color: Similar RAL 7016 structured (anthracite gray)

### Technical Data

Further technical information → below

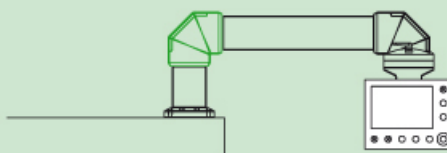
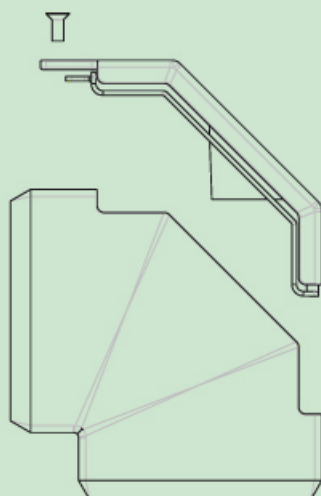
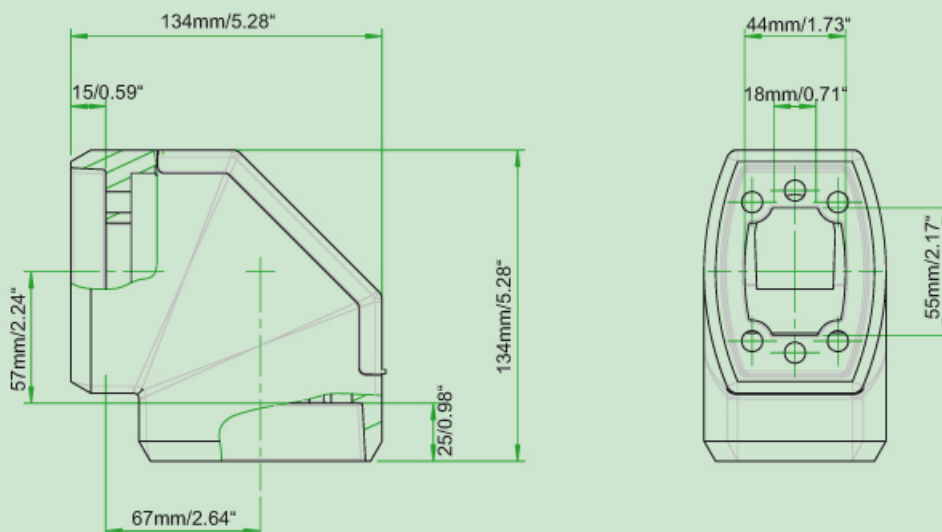
### Accessories

- Light adapter → page 24



Description	Weight		Order No.
	kg	lbs	
HLT Elbow	1.4	3.09	7595-7401-04-01

### Technical Information





# HLT Pendant Arm System

## HLT Narrow Flange Elbow Joint



### Product Description

- For connection of a horizontal aluminum profile to an enclosure of narrow width
- Turn area 170° / 170°
- Turning restrictions 90°/90° through screws (factory set: 170° / 170°)
- Console assembly possible
- Color: Similar RAL 7016 structured (anthracite gray)

### Technical Data

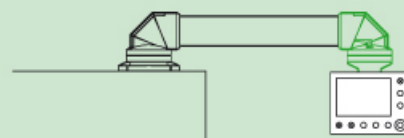
Further technical information → below

### Note

\* Socket cap crew M5x12  
The swivelrange can be limited to 90°/90° by screwing in the socket cap screw.

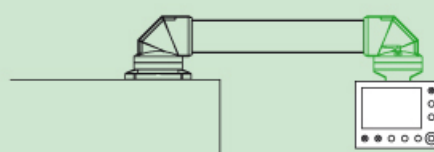
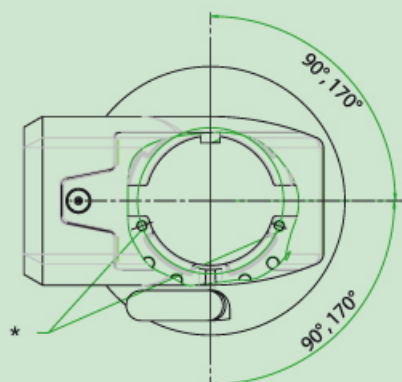
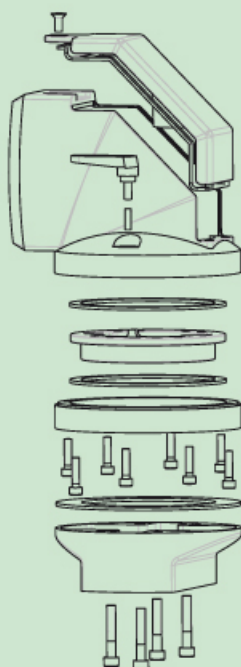
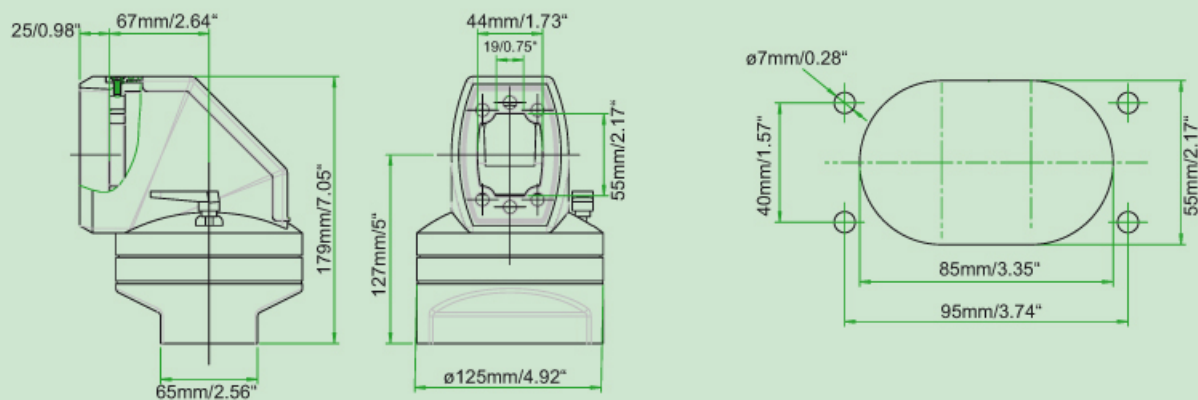
### Accessories

- Light adapter → page 24



Description	Weight		Order No.
	kg	lbs	
HLT Narrow Flange Elbow Joint	2.8	6.17	7595-7401-09-01

### Technical Information



## HLT Joint



### Product Description

- For connection of a vertical aluminum profile to an enclosure
- Turn area 170° / 170°
- Turning restrictions 90° / 90° through screws (factory set: 170° / 170°)
- Console assembly possible
- Color: Similar RAL 7016 structured (anthracite gray)

### Technical Data

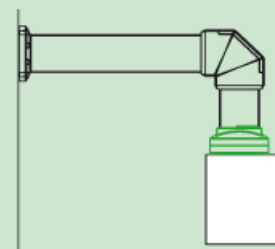
Further technical information → below

### Note

\* Socket cap crew M5x12  
The swivelrange can be limited to 90°/90° by screwing in the socket cap screw.

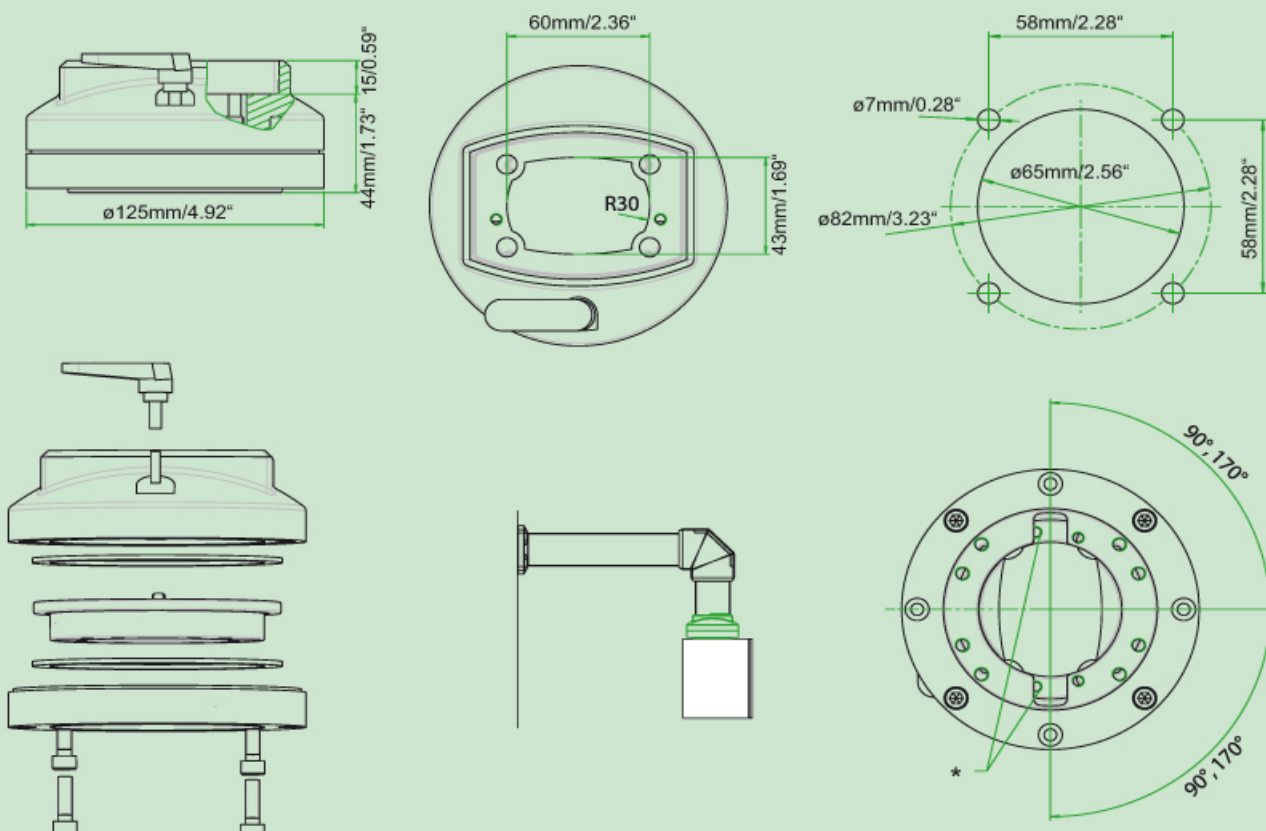
### Accessories

- HLT Incline Adapter → page 17
- Cable protection disk → page 25



Description	Weight		Order No.
	kg	lbs	
HLT Joint	1.5	3.31	7595-7401-05-01

### Technical Information



# HLT Pendant Arm System

## HLT Narrow Flange Joint



### Product Description

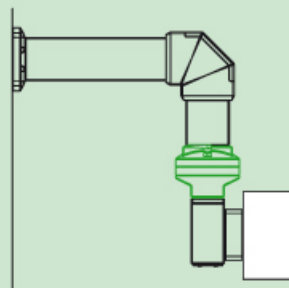
- For connection of a vertical aluminum profile to an enclosure of narrow width
- Turn area 170° / 170°
- Turning restrictions 90° / 90° through screws (factory set: 170° / 170°)
- Color: Similar RAL 7016 structured (anthracite gray)

### Technical Data

Further technical information → below

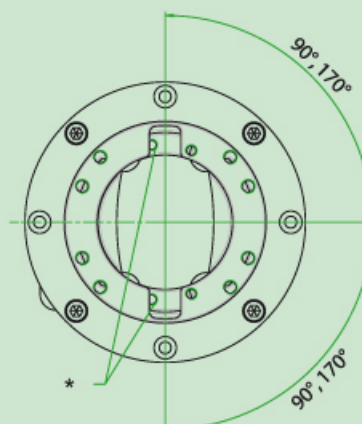
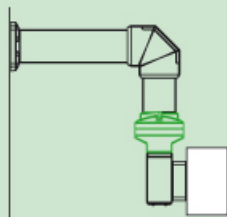
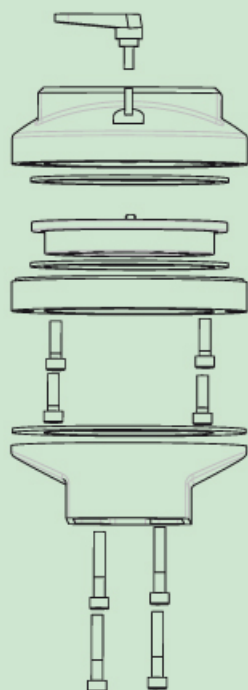
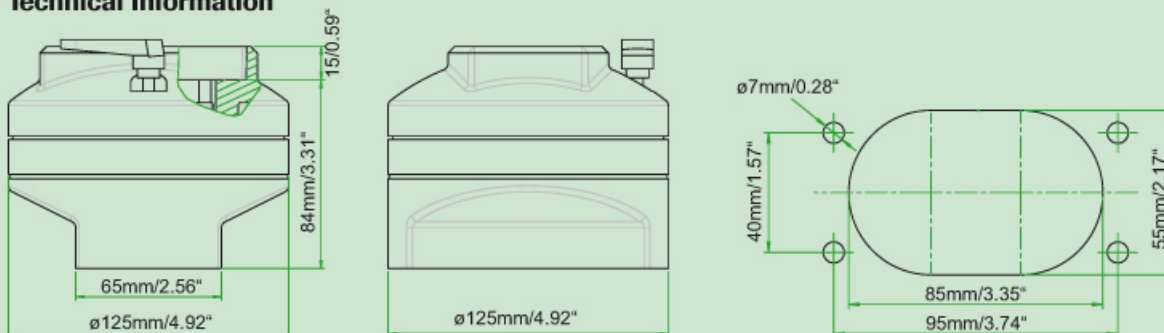
### Note

\* Socket cap crew M5x12  
The swivelrange can be limited to 90°/90° by screwing in the socket cap screw.



Description	Weight		Order No.
	kg	lbs	
HLT Narrow Flange Joint	1.9	4.19	7595-7401-07-01

### Technical Information



## HLT Incline Adapter

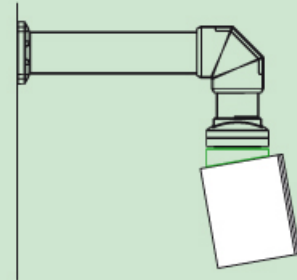


### Product Description

- For a fixed connection of enclosure and joint or elbow joint
- 10° incline
- Color: Similar RAL 7016 structured (anthracite gray)

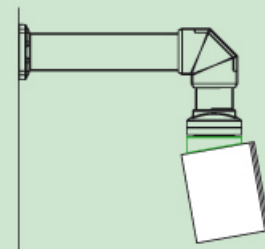
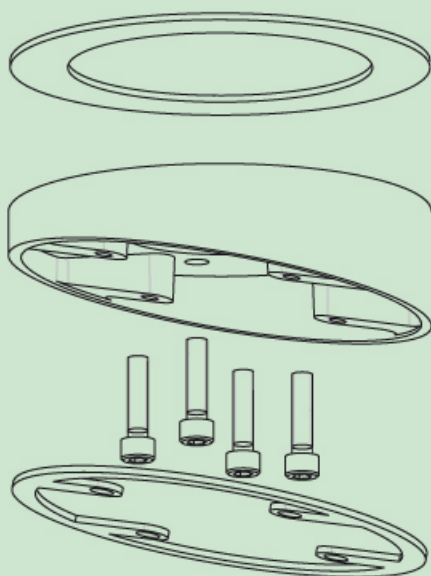
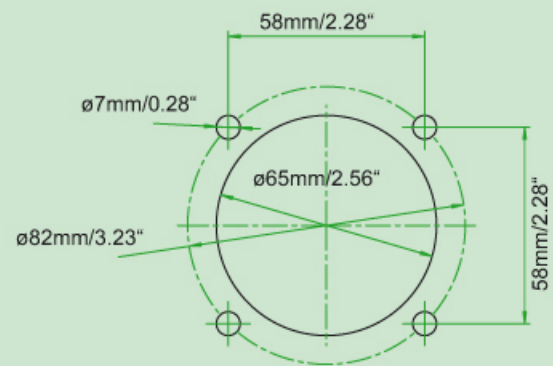
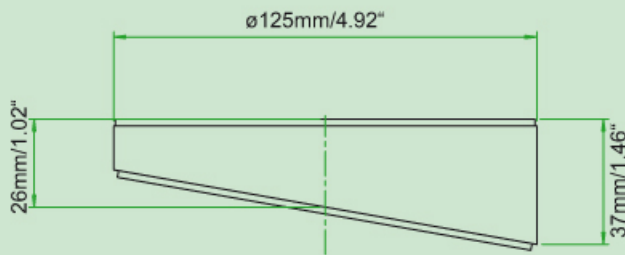
### Technical Data

Further technical information → below



Description	Weight		Order No.
	kg	lbs	
HLT Incline Adapter	0.3	0.66	7595-7401-10-01

### Technical Information



# HLT Pendant Arm System

## HLT Narrow Flange Incline Adapter

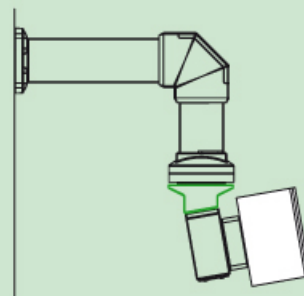


### Product Description

- For a fixed connection of an enclosure of narrow width an joint or elbow joint
- 10° incline
- Color: Similar RAL 7016 structured (anthracite gray)

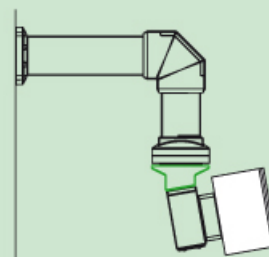
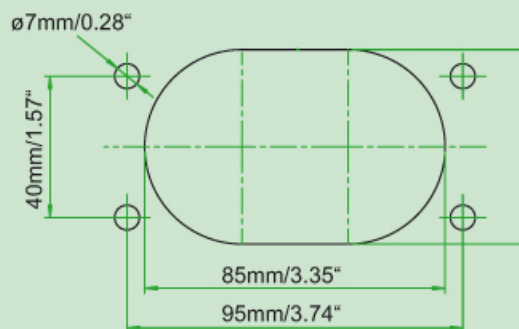
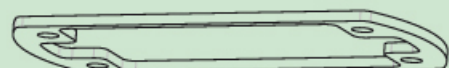
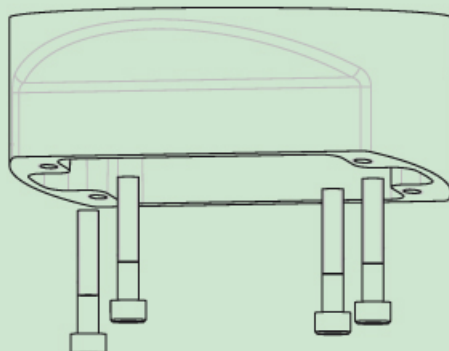
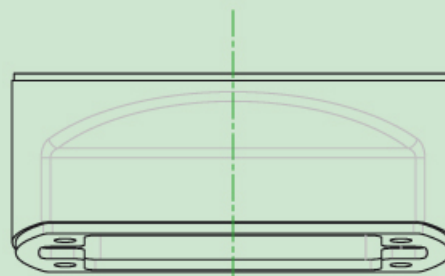
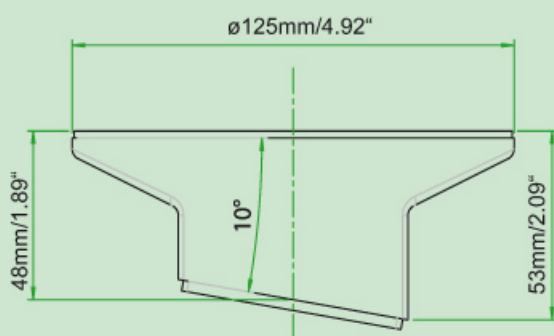
### Technical Data

Further technical information → below

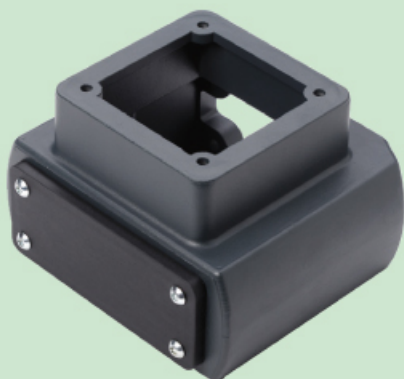


Description	Weight		Order No.
	kg	lbs	
HLT Narrow Flange Incline Adapter	0.5	1.1	7595-7401-11-01

### Technical Information



## HLT Enclosure Adapter VESA



### Product Description

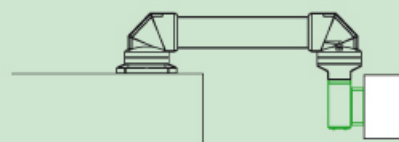
- For a fixed connection of an enclosure or monitor with a narrow flange joint or a narrow flange elbow joint
- Connection to the VESA 75 hole pattern
- Connection to narrow flange incline adapter (10°)
- Cover detachable for easy installation
- Cable guiding directly or indirectly through available cable guiding systems, like e.g. icotek (factory set: Dummy panel BP 16 icotek)
- Color: Similar RAL 7016 structured (anthracite gray)

### Technical Data

Further technical information → below

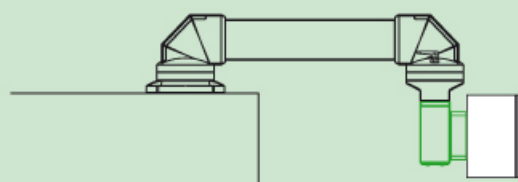
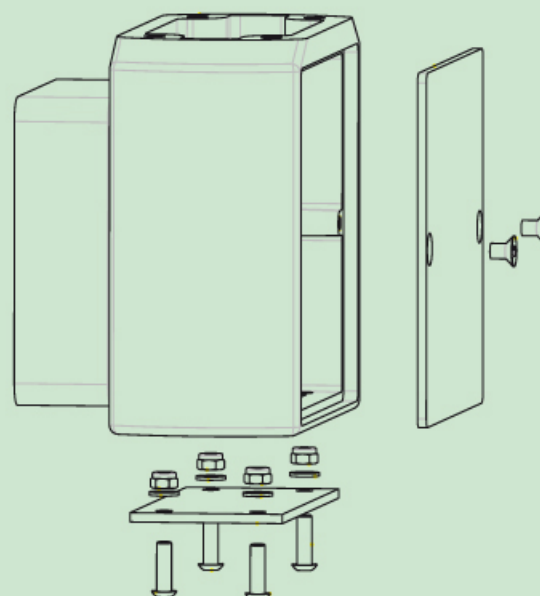
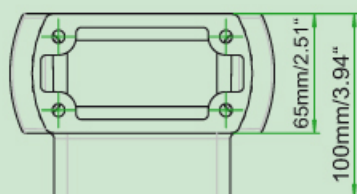
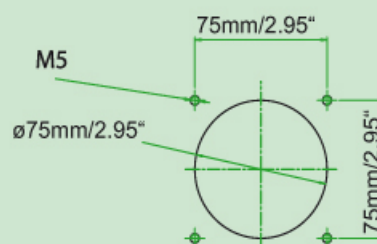
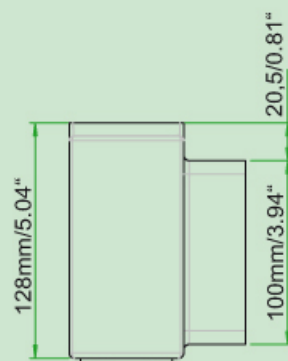
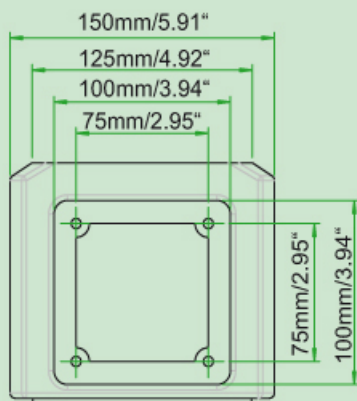
### Accessories

- VESA 100 adapter plate → page 25



Description	Weight		Order No.
	kg	lbs	
HLT Enclosure Adapter VESA	1.2	2.65	7595-7401-12-01

### Technical Information



VESA= worldwide standard for interface between pendant arm and monitor  
icotec=Cable connector, cable glends



# HLT Pendant Arm System

## HLT Elbow Adapter 48

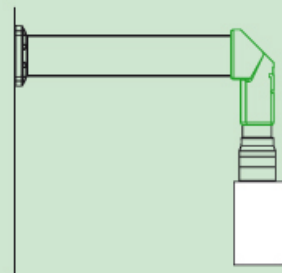


### Product Description

- To connect a horizontal aluminum profile and a vertical round pipe with 48 mm diameter
- Cover detachable for easy installation
- Fall protection with enclosed screw
- Color: Similar RAL 7016 structured (anthracite gray)

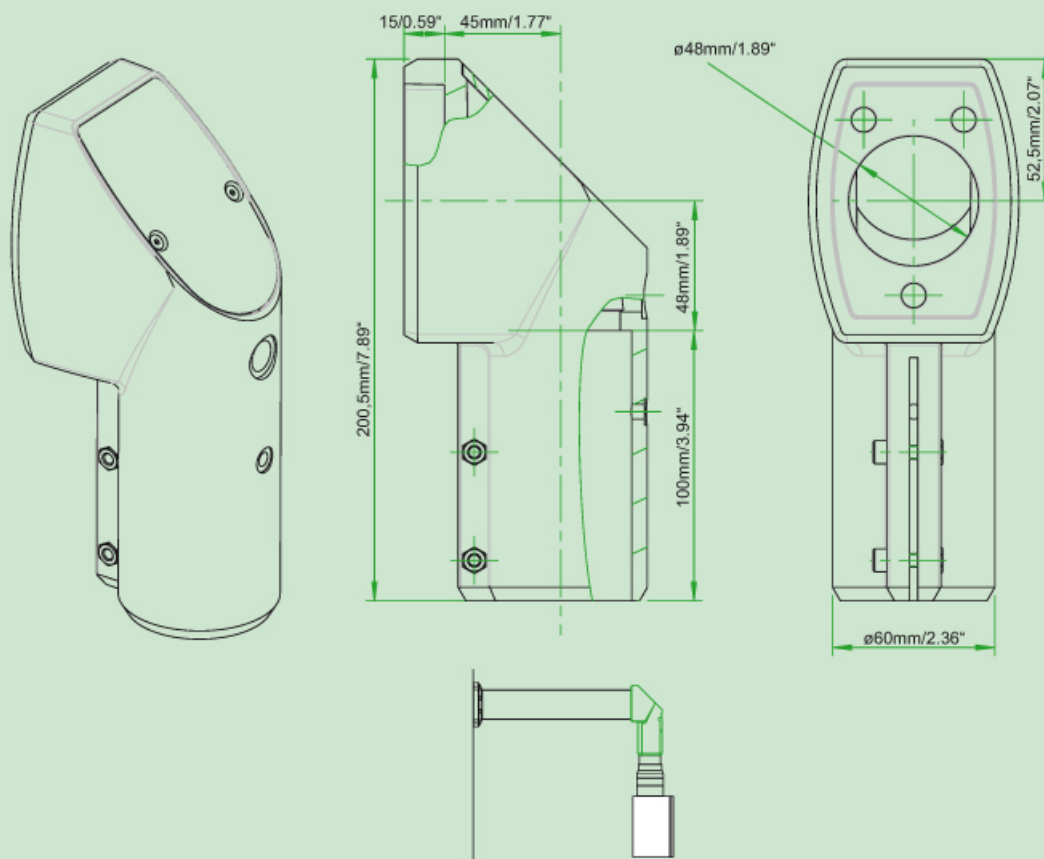
### Technical Data

Further technical information → below



Description	Weight		Order No.
	kg	lbs	
HLT Elbow Adapter 48	0.8	1.76	7595-7401-16-01

### Technical Information



## HLT Joint 48

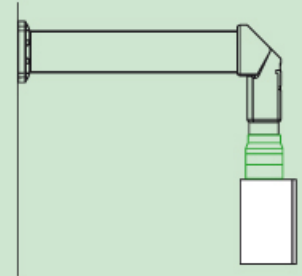


### Product Description

- To connect a horizontal aluminum profile and a vertical round pipe with 48 mm diameter
- Fall protection w3ith enclosed screw
- Max. load 50 kg (110 lbs)
- Turn area 250°
- Color: Similar RAL 7016 structured (anthracite gray)

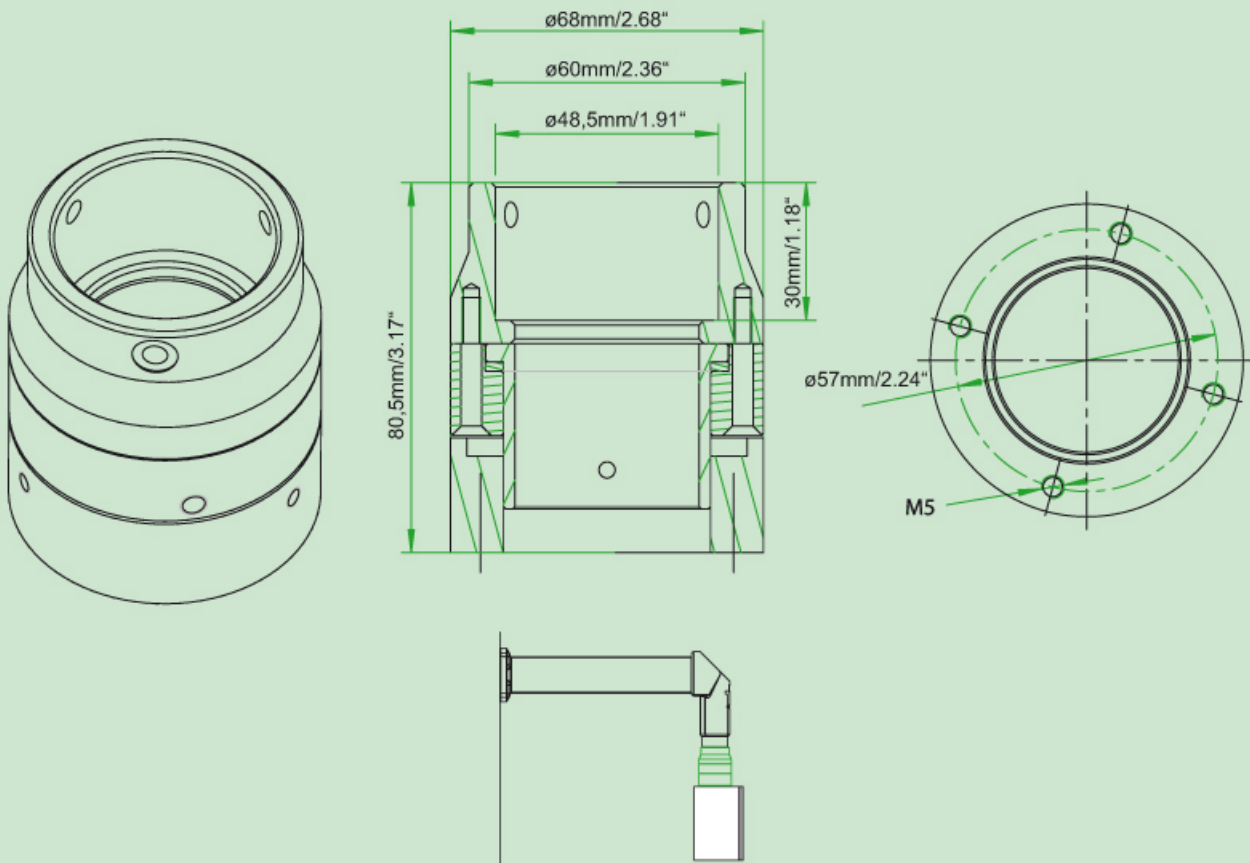
### Technical Data

Further technical information → below



Description	Weight		Order No.
	kg	lbs	
HLT Joint 48	0.7	1.54	7595-7401-17-01

### Technical Information



# HLT Pendant Arm System

## Swivel Tilt Coupling



### Product Description

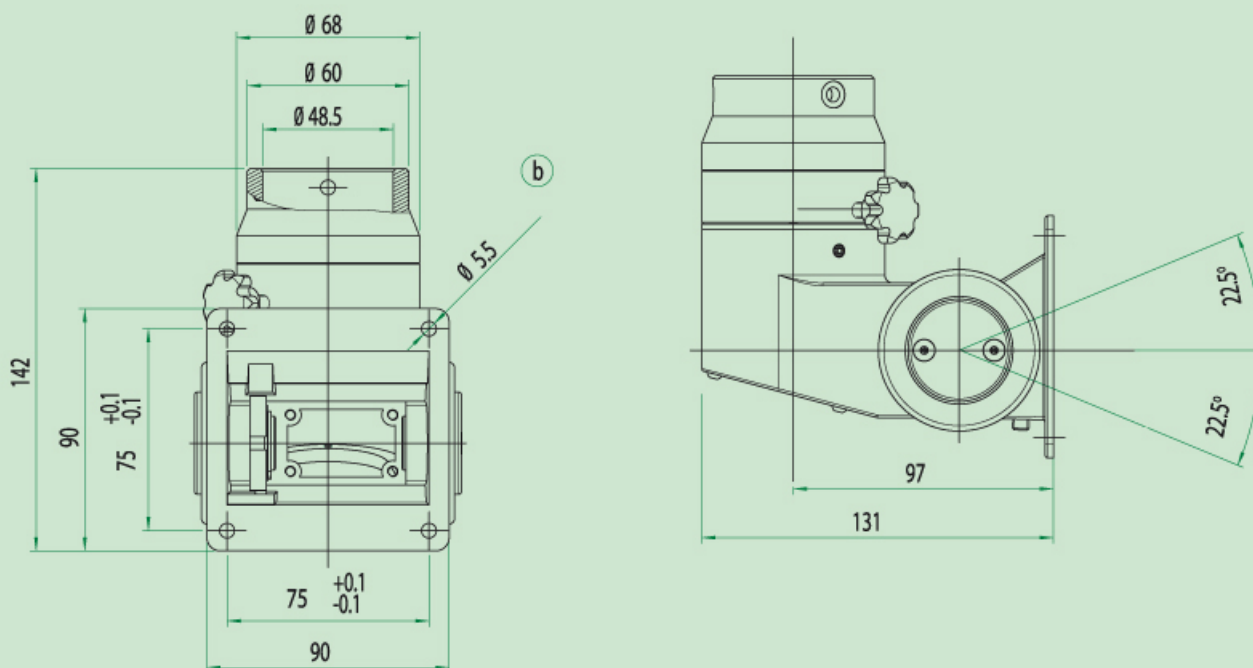
- Compact design
- With internal cable guide through VESA connection
- Quicklock available optional
- Mounting of monitors to HLT 48 pendant arm system
- Protection class IP 54 optional
- No rubber gaiter
- VESA 75 or 100 possible
- Opening for cable of both sides optional

### Technical Data

Further technical information → below

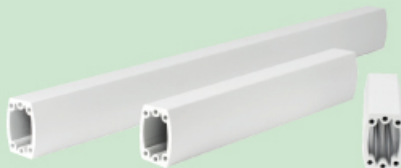
Description	Order No.
Swivel Tilt Coupling	7595-7301-01-01

### Technical Information



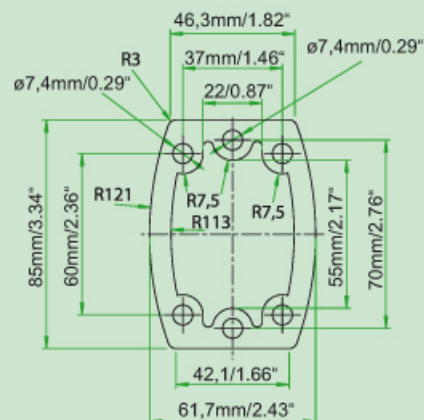
VESA= worldwide standard for interface between pendant arm and monitor

## HLT Aluminum Profiles



### Product Description

- Aluminum profile for horizontal and vertical use. The horizontal length determines the load capacity of the system.
- Can be cut to length
- Variable inclination adjustment possible (load-dependent up to 4°)
- Standard lengths: 250, 500, 1.000 and 2.000 mm
- Custom lengths on request
- Color: Similar RAL 7016 structured (anthracite gray)

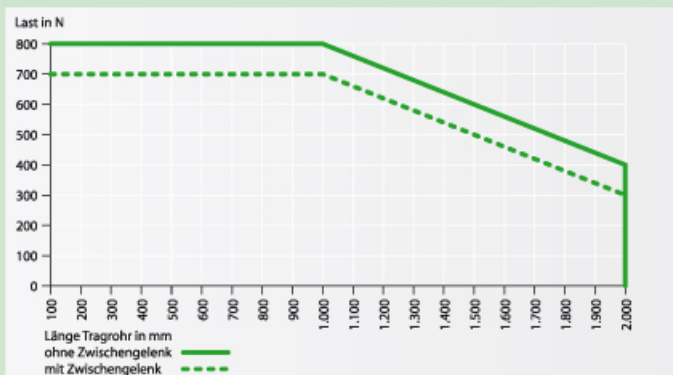


### Technical Data

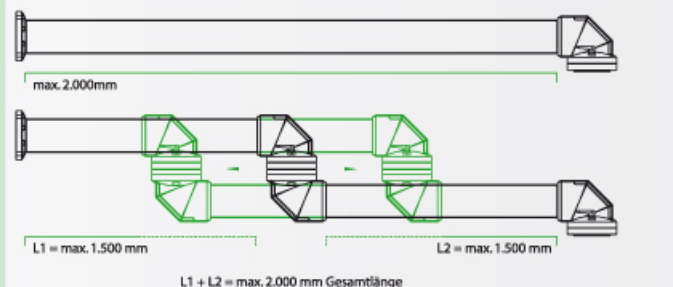
Further technical information → below

Description	Length		Order No.
	mm	inch	
HLT Aluminum Profiles	250	9.84	<b>7595-7401-30-0250</b>
	500	19.69	<b>7595-7401-30-0500</b>
	1,000	39.37	<b>7595-7401-30-1000</b>
	1,500	59.06	<b>7595-7401-30-1500</b>
	2,000	78.74	<b>7595-7401-30-2000</b>

The horizontal length of the profile determines its load capacity.



For a pendant arm system with joint, the length of the individual profiles is variable (max. 1500mm). The overall length though, must not exceed 2000mm.



Possibility of continuous adjustment of the gradient (load dependent up to 4°)



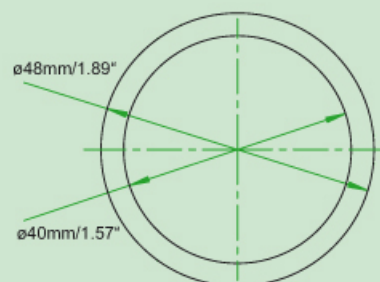
# HLT Pendant Arm System

## HLT Round Pipes 48



### Product Description

- Round pipe  $\varnothing$  48 mm for vertical assembly
- Can be cut to length
- Standard lengths: 250, 500, and 750 mm
- Custom lengths on request
- Color: Similar RAL 7016 structured (anthracite gray)
- Weight: approx. 1.6 kg/m / 1.1 lbs/ft



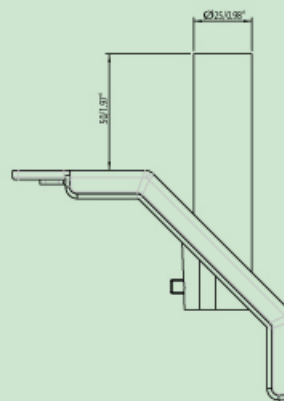
Description	Art. Nr.
Round pipes 250 mm / 9.84 inch	7595-7401-40-0250
Rundrohr 500 mm / 19.68 inch	7595-7401-40-0500
Rundrohr 750 mm / 29.53 inch	7595-7401-40-0750

## Light adapter



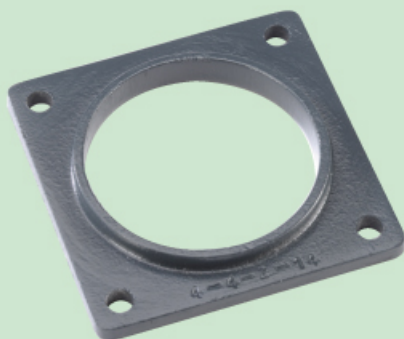
### Product Description

- For a fixed installation of a signal light with 25 mm connection (inner dimension 19 mm) to: Set-up joint, wall joint, intermediate joint, elbow, elbow joint, or narrow flange elbow joint
- Color: Similar RAL 7016 structured (anthracite gray)



Description	Order No.
Light adapter	7595-7401-15-01

## Cable protection disk

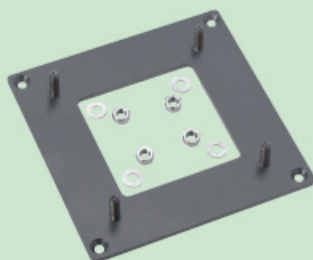


### Product Description

- To avoid cable damage at enclosure apertures
- Applicable with joint and elbow joint
- Color: Similar RAL 7016 structured (anthracite gray)

Description	Order No.
Cable protection disk	7595-7401-90-01

## VESA 100 adapter plate

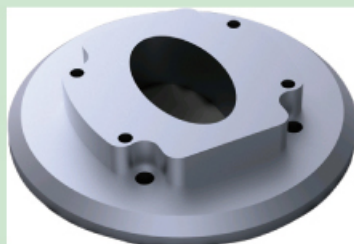


### Product Description

- For fixed connections of monitors with VESA 100 hole pattern and enclosure adapter VESA
- Color: Similar RAL 7016 structured (anthracite gray)

Description	Order No.
VESA 100 adapter plate	7595-7401-90-02

## Siemens-Pro adapter



### Product Description

- Connection adapter pendant arm system to Siemens Pro-Panel

Description	Order No.
Siemens-Pro adapter	7595-7401-90-42
	7595-7401-90-41

VESA= worldwide standard for interface between pendant arm and monitor