

# Lake Monitors

## ClearView™ VALUE FLOW METER

Economical way to monitor municipal pressure water flows, observe case drain flows and verify pump outputs.

FOR 1/2" – 1" PIPE SIZES

STYLE CV

For media compatibility, select from:

**ClearView™ H<sub>2</sub>O**

VALUE FLOW METER

Polycarbonate body (ClearView H<sub>2</sub>O) or

**ClearView™ +**

VALUE FLOW METER

Polysulphone body (ClearView+).

### UNRESTRICTED MOUNTING

Allows for horizontal, vertical or inverted installation of the meter.

### COMPACT AND RUGGED DESIGN

Measures less than 8-1/4" long and 2-7/16" diameter with a rigid tube and union nut design.

### VISUAL INSPECTION OF FLUID

The transparent body allows for visual inspection of fluid conditions. Diagnose problems at a glance.

### MULTIPLE MATERIALS AND CALIBRATIONS AVAILABLE

With a variety of wetted materials of construction and media calibrations, the ClearView™ will be well suited to your process.

### SENSING METHOD ASSURES ACCURACY

The proven variable-area piston metering assembly provides accurate, dependable flow rate indication.

### SUPERIOR READABILITY

High contrast scale/indicator provides easy-to-read flow rate measuring resolution along with dual units of GPM and LPM.

### MULTIPLE PORTING OPTIONS AVAILABLE

ClearView end ports are available in a variety of materials, sizes, and threading options to simplify installation.

### LOW COST PRECISION

Measuring accuracy of  $\pm 5\%$  of range and repeatability of  $\pm 1\%$ .



### ENGINEERING SPECIFICATION

THE CLEARVIEW FLOW METER SHALL:

- Use the variable area piston metering method to measure flow rate.
- Not require inlet or outlet straight plumbing, or require vertical pipe mounting.
- Have a measuring accuracy of  $\pm 5\%$  of full scale with  $\pm 1\%$  repeatability.
- Be Lake Monitors No. CV - \_ \_ - \_ \_

[www.lakemonitors.com](http://www.lakemonitors.com)



[www.comoso.com](http://www.comoso.com)

# ClearView™ Flow Meter

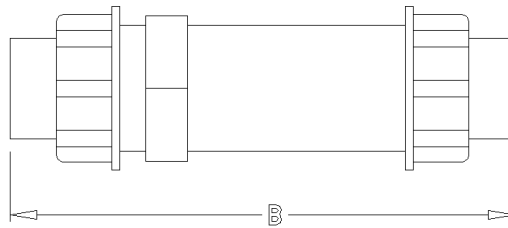
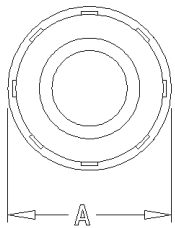
## MATERIALS OF CONSTRUCTION (WETTED COMPONENTS)

	ClearView H <sub>2</sub> O	ClearView +
End Ports	Brass, Polysulphone	Brass, Polysulphone
Seals	Buna-N®	Buna-N®
Spring	Stainless Steel	Stainless Steel
Body	Polycarbonate	Polysulphone
Indicator	Polysulphone	Polysulphone

Buna-N is a registered trademark of Chemische Werke Huls

## PERFORMANCE

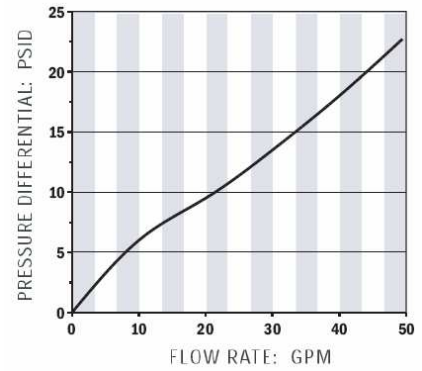
Measuring Accuracy:	±5% of full-scale	
Repeatability:	±1% of full-scale	
Flow Measuring Range:	1- 30 GPM (5-110 LPM)	
Turn Down Ratio (All Ranges):	10:1	
Maximum operating pressure:	325 PSIG (22.4 Bar)	
Maximum operating temperature:	ClearView H <sub>2</sub> O	200°F (93°C)
	ClearView+	250°F (121°C)
Pressure Differential:	See graph on right	
Filtration requirements:	74 Micron (200 U.S. mesh) minimum	



## MECHANICAL SIZE CODE

DIM	1/2" Female	3/4" Female	1" Female
A	2-7/16" (62mm)	2-7/16" (62mm)	2-7/16" (62mm)
B	7-5/32" (182mm)	7-9/16" (192mm)	7-9/16" (192mm)
Port Type	NPTF, BSPP	NPTF, BSPP	NPTF, BSPP

## TYPICAL PRESSURE DIFFERENTIALS



[www.lakemonitors.com](http://www.lakemonitors.com)

AW-LAKE COMPANY  
 A TASI Group Company  
 8809 Industrial Dr., Franksville, WI 53126  
 262.884.9800 / Fax: 262.884.9810  
 800.850.6110