

Sensor Installation Instructions for Round Body Cylinders

Bore Size		Strap Length		Bracket Number
Inch	mm	Inch	mm	
.56 to 1.00	8-25	4.3	110	P8S-TMC01
1.00 to 2.50	26-63	9.0	230	P8S-TMC02
2.50 to 4.00	64-100	17.7	450	P8S-TMC03

Sensor (P/N P8S-G □ □ □ □): Remove sensor cable assembly from bag and review application power instructions. Slide sensor into bracket housing.

SENSOR/BRACKET ASSEMBLY:

For sensors with rectangular body (shown in **Figure 1**), slide sensor into bracket housing then lock in place by rotating slotted sensor screw clockwise until the sensor is snug in the bracket.

For sensors with oval body (not shown), slide sensor into bracket housing then lock in place by rotating 2mm sensor setscrew clockwise until the sensor is snug in the bracket.

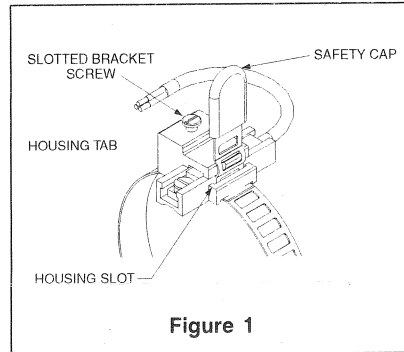


Figure 1

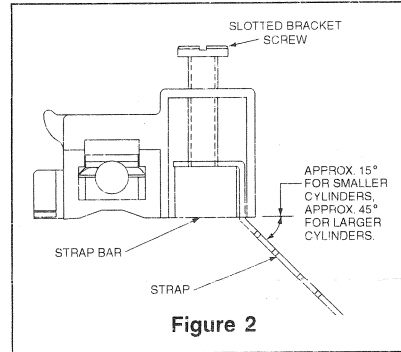


Figure 2

BRACKET/CYLINDER ASSEMBLY

1. Unthread slotted screw in bracket until strap bar is flush at base of bracket as shown in **Figure 2**. Then, bend strap as shown (about 15° for small cylinders, 45° for larger cylinders).
2. Mount onto cylinder by pulling band around the cylinder body then through the housing slot. Pull band tight and catch one of the slots on the strap to the housing tab shown in **Figure 3**.
3. Tighten slotted bracket screw until the strap is snug on the cylinder body, but the entire assembly can be slid down the cylinder body to the desired location.

SENSOR ACTIVATION

4. Supply power to the sensor as specified on the technical bulletin supplied with the sensor. The LED on the sensor housing should illuminate when the sensor is activated by the magnet in the cylinder piston.
5. Slide sensor and bracket to the desired location. Tighten slotted bracket screw and sensor housing screw to secure their location. If desired, trim excess strap length, making sure sufficient length is left for the installation of the safety cap.
6. **INSTALL SAFETY CAP.**

⚠ WARNING: The end of the band will have sharp edges which can cause severe injury to nearby personnel. For all cases, always place the safety cap on the end of the band as shown in **Figure 1**.

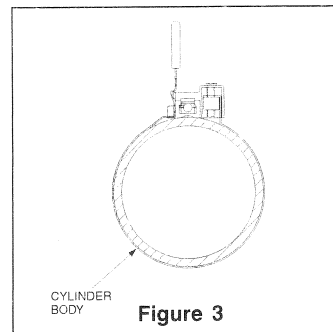


Figure 3