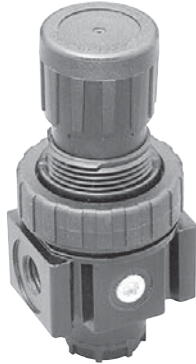
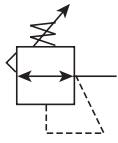
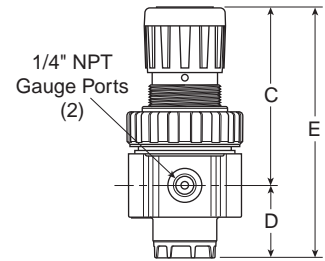
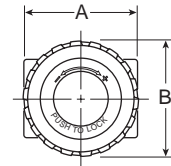


## 05R Regulators – Economy



### Features

- Secondary aspiration plus balanced poppet provides quick response and accurate pressure regulation.
- Rolling diaphragm for extended life.
- Removable non-rising knob for panel mounting and tamper resistance.
- Easily serviced.
- Reverse Flow.
- High Flow: 1/4" – 30 SCFM<sup>§</sup>  
 3/8" – 40 SCFM<sup>§</sup>



Port Size	NPT
Without Gauge	
1/4"	<b>05R113A*</b>
3/8"	<b>05R213A*</b>
With 160 PSI Gauge	
1/4"	<b>05R118A*</b>
3/8"	<b>05R218A*</b>

05R Regulator Dimensions		
A	B	C
2.00 (51)	2.06 (52)	3.16 (80)
D	E	
1.28 (32)	4.44 (113)	

Inches (mm)

Standard part numbers shown bold. For other models refer to ordering information below.

NOTE: 1.53 Dia. (39mm) hole required for panel mounting.

§ SCFM = Standard cubic feet per minute at 100 psig inlet, 90 psig no flow secondary setting and 10 psig pressure drop.

### Ordering Information

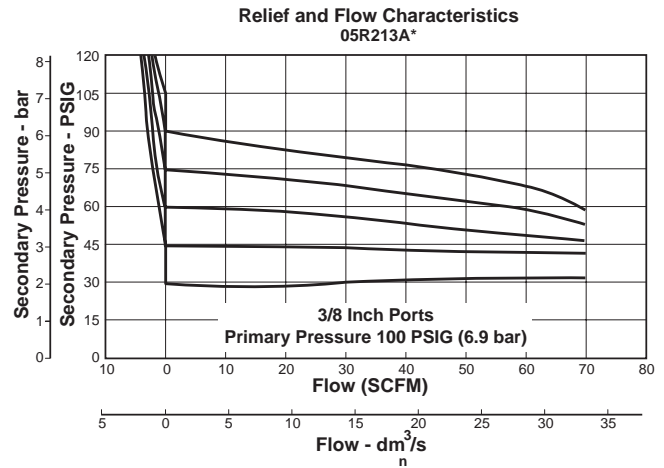
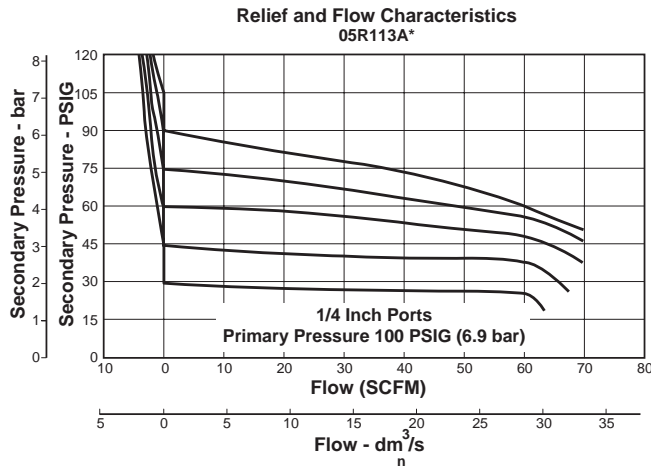


<b>Port Size</b> 1 1/4 Inch 2 3/8 Inch	<b>Pressure Range</b> Without Gauge <b>11 60 psig</b> <b>13 125 psig</b> 14 200 psig With Gauge** <b>16 60 psig</b> <b>18 125 psig</b> 19 200 psig ** Includes 1-1/2" Dial Face Gauge	<b>Relief</b> <b>A Relieving</b> L Non-Relieving	<b>Engineering Level</b> * Will be Entered at Factory	<b>Port Type</b> Blank NPT 1* BSPP * 1/4 & 3/8 inch meet ISO 1179-1 Standard.	<b>Options</b> <b>Blank No Options</b> L† Preset Non-Adjustable P† Preset Adjustable S† Pressure Limiter Max. Adjustable T† Pressure Limiter Max. Non-Adjustable † Inlet Pressure is 100 psig. For other pressures, contact factory.	<b>Preset / Pressure Limited</b> <b>Blank None</b> XXX* Preset Pressure XXX* Pressure Limited * Available Preset / Pressure Limited Range, 10 to 90 psig in 5 psig increments. For higher pressures, contact factory. (Example: 065 = 65 psig)
--	--	--	--	--	--	---

**Spring Type by Preset / Limited Pressure:**  
 For Preset / Limited Pressure 26 to 50 use 60 PSI Spring  
 For Preset / Limited Pressure 51 to 90 use 125 PSI Spring

**BOLD ITEMS ARE MOST POPULAR.**

**Technical Information**



**CAUTION:**

**REGULATOR PRESSURE ADJUSTMENT** – The working range of knob adjustment is designed to permit outlet pressures within their full range. Pressure adjustment beyond this range is also possible because the knob is not a limiting device. This is a common characteristic of most industrial regulators, and limiting devices may be obtained only by special design.

For best performance, regulated pressure should always be set by increasing the pressure up to the desired setting.

**⚠ WARNING**

**Product rupture can cause serious injury.  
 Do not connect regulator to bottled gas.  
 Do not exceed maximum primary pressure rating.**

**05R Regulator Kits & Accessories**

- Bonnet Assembly Kit ..... PS915P
- Control Knob ..... P04420
- Gauges – 1-1/2" Dial Face
  - 30 psig (0 to 2.1 bar) ..... K4515N14030
  - 60 psig (0 to 4.1 bar) ..... K4515N14060
  - 160 psig (0 to 11.0 bar) ..... K4515N14160
  - 300 psig (0 to 20.0 bar) ..... K4515N14300
- 2" Dial Face
  - 60 psig (0 to 4.1 bar) ..... K4520N14060
  - 160 psig (0 to 11.0 bar) ..... K4520N14160
  - 300 psig (0 to 20.0 bar) ..... K4520N14300
- Mounting Bracket Kit ..... PS963P
- Panel Mount Nut – Metal ..... PS964P
- Springs – 1-30 psig Range ..... P04427
  - 1-60 psig Range ..... P04426
  - 2-125 psig Range ..... P04425
  - 2-200 psig ..... P02934
- Service Kit – Relieving ..... PS908P
  - Non-Relieving ..... PS909P

**Specifications**

- Gauge Ports (2) ..... 1/4 Inch
- Port Threads ..... 1/4, 3/8 Inch
- Primary Pressure Rating –
  - Maximum Primary Pressure ..... 300 psig (17.2 bar) Max.
  - For Secondary Pressure Ranges see above charts.
- Temperature Rating ..... 32°F to 175°F (0°C to 80°C)
  - Low Temperature ..... -4°F to 125°F (-20°C to 52°C)
- Weight ..... 1.1 lb. (0.49 kg)

**Materials of Construction**

- Adjusting Stem ..... Brass
- Bonnet ..... Plastic
- Body ..... Zinc
- Collar, Knob ..... Plastic
- Diaphragm ..... Nitrile
- Poppet & Cap ..... Plastic
- Seals ..... Nitrile
- Springs – Poppet & Control ..... Steel



**C**

- Product Selection
- Filters
- Coalescers
- Regulators
- Filter / Regulators
- Lubricators
- Combos
- Accessories