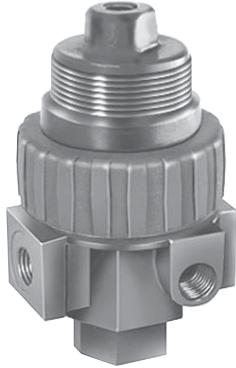
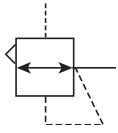
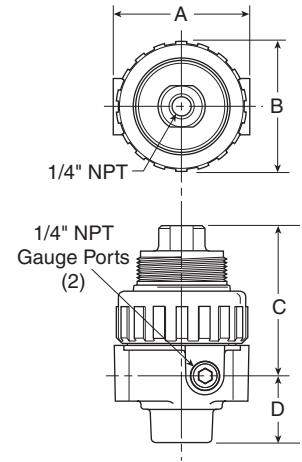


12R Pilot Controlled Regulator – Standard



Features

- Balanced poppet provides quick response and accurate pressure regulation.
- Pilot controlled regulators can be mounted “out of reach” with pilot regulator installed in a convenient location.
- Solid control piston for extended life.
- Two full flow 1/4" gauge ports can be used as additional outlets.
- Pilot port 1/4 Inch.
- High Flow: 1/2" – 140 SCFM[§]
 3/4" – 140 SCFM[§]



Port Size	NPT
Without Gauge	
1/2"	12R315P*
3/4"	12R415P*
With 160 PSI Gauge	
1/2"	12R321P*
3/4"	12R421P*

12R Pilot Regulator Dimensions		
A	B	C
3.24 (82)	2.74 (70)	3.15 (80)
D	E	
1.61 (41)	4.76 (121)	

Inches (mm)

Standard part numbers shown bold. For other models refer to ordering information below.

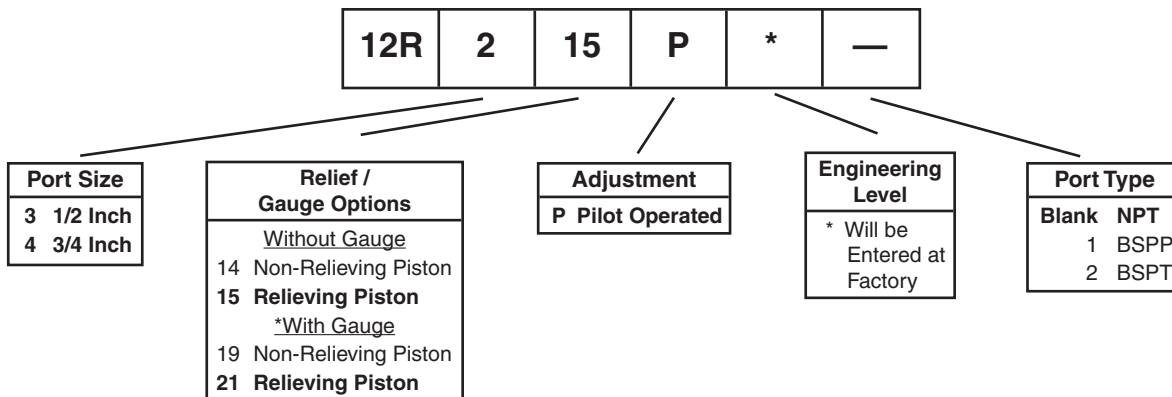
NOTE: 2.00 Dia. (50,8mm) hole required for panel mounting.

§ SCFM = Standard cubic feet per minute at 100 psig inlet, 90 psig no flow secondary setting and 10 psig pressure drop.

⚠ WARNING

**Product rupture can cause serious injury.
 Do not connect regulator to bottled gas.
 Do not exceed maximum primary pressure rating.**

Ordering Information



* Includes 2" Dial Face Gauge 0 to 300 psig

BOLD ITEMS ARE MOST POPULAR.



