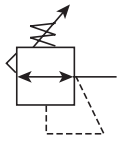
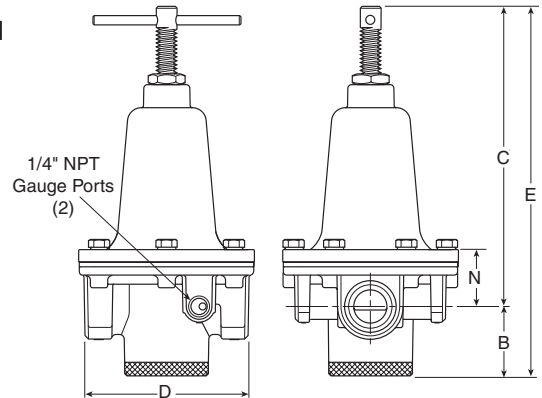
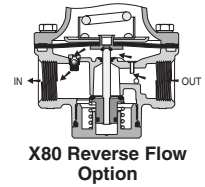
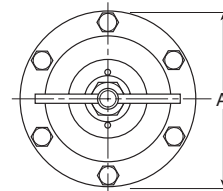


R119 Regulators – Hi-Flow



Features

- High flow performance featuring rugged design for the most demanding applications.
- Ideal for those installations calling for constant pressure with wide variation in flow.
- Diaphragm operated design with balanced poppet for quick and accurate regulation.
- Secondary aspiration plus balanced poppet provides quick response and accurate pressure regulation.
- Heavy duty tee handle adjustment.
- Reverse flow version available.
- High Flow: 3/4" – 300 SCFM[§]
 1" – 400 SCFM[§]
 1-1/4" & 1-1/2" – 500 SCFM[§]



Port Size	NPT
	Relieving
Without Gauge 0-125 psig Reduced Pressure	
3/4"	R119-06C
1"	R119-08C
1-1/4"	R119-10C
1-1/2"	R119-12C
With Gauge 0-125 psig Reduced Pressure	
3/4"	R119-06CG
1"	R119-08CG
1-1/4"	R119-10CG
1-1/2"	R119-12CG

R119-06C, R119-08C Regulator Dimensions					
A	B	C	D	E	N
4.69 (119)	1.87 (47)	8.15 (207)	4.38 (111)	10.02 (255)	1.61 (41)
R119-10C, R119-12C Regulator Dimensions					
A	B	C	D	E	N
4.94 (125)	1.81 (46)	8.53 (217)	4.94 (125)	10.34 (263)	1.99 (50.6)

inches (mm)

Standard part numbers shown bold. For other models refer to ordering information below.

§ SCFM = Standard Cubic Feet Per Minute at 100 psig Inlet, 75 psig No Flow Secondary Setting, and 20 psig Pressure Drop.

⚠ WARNING

Product rupture can cause serious injury.
Do not connect regulator to bottled gas.
Do not exceed maximum primary pressure rating.

Ordering Information

R	119	—	06	C	G	/**
----------	------------	---	-----------	----------	----------	------------

Port Threads
— NPT
G BSPP

Port Size
06 3/4 Inch
08 1 Inch
10 1-1/4 Inch
12 1-1/2 Inch

Reduced Pressure Range
C 0-125 psig
D 0-250 psig

Options
Blank None
G Gauge
K Non-Relieving
X64† Fluorocarbon O-Rings and Diaphragm
X80† Reverse Flow

Engineering Level
* Will be Entered at Factory

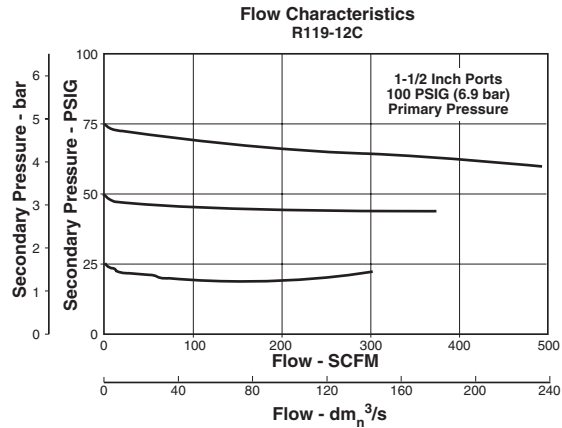
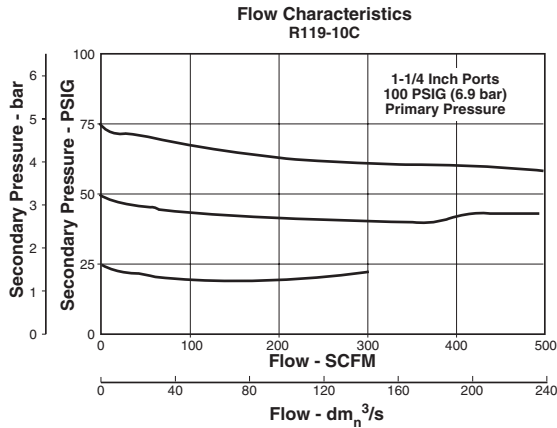
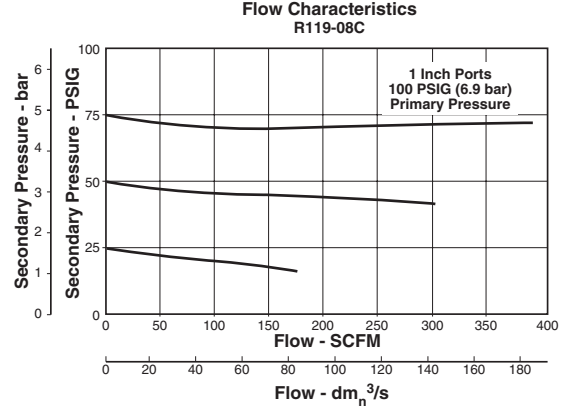
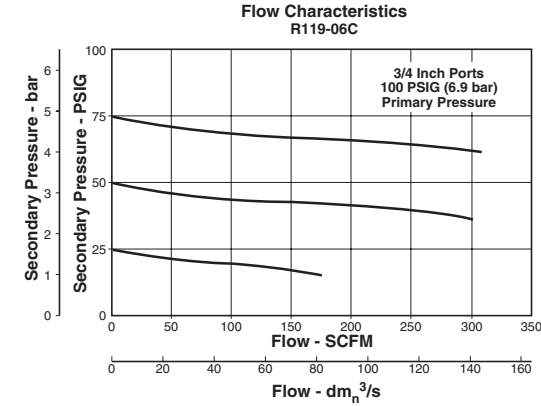
† Reverse flow for use downstream of control valves.

‡ Brass Bottom Plug Standard with X64 Option.

BOLD ITEMS ARE MOST POPULAR.



Technical Information



CAUTION:

REGULATOR PRESSURE ADJUSTMENT –

The working range of knob adjustment is designed to permit outlet pressures within their full range. Pressure adjustment beyond this range is also possible because the knob is not a limiting device. This is a common characteristic of most industrial regulators, and limiting devices may be obtained only by special design.

For best performance, regulated pressure should always be set by increasing the pressure up to the desired setting.

R119 Regulator Kits & Accessories

Gauges –

- 2" Dial Size, 1/4" Back Connection
 0 to 60 psig (0 to 400 kPa)K4520N14060
- 2" Dial Size, 1/4" Back Connection
 0 to 160 psig (0 to 1100 kPa) K4520N14160
- 2" Dial Size, 1/4" Back Connection
 0 to 300 psig (0 to 2068 kPa)K4520N14300

Mounting Bracket Kit 18B57

Repair Kits –

- Non-Relieving Diaphragm,
 Valve Assembly (3/4", 1") RK118B
- Non-Relieving Diaphragm,
 Valve Assembly (1-1/4", 1-1/2") RK118D
- Relieving Diaphragm,
 Valve Assembly (3/4", 1") RK119B
- Relieving Diaphragm,
 Valve Assembly (1-1/4", 1-1/2") RK119D

For Fluorocarbon Repair Kits, add X64 to Kit Number suffix.

Specifications

- Gauge Ports (2)**1/4 Inch
- Port Threads** 3/4, 1, 1-1/4, 1-1/2 Inch
- Reduced Pressure Range** 2 to 125 psig (0.15 to 8.5 bar)
- Supply Pressure** 300 psig Maximum (20.4 bar)
- Temperature Rating** 40°F to 125°F (4.4°C to 52°C)
- Weight –**
- R119-06, R119-08 6.2 lb. (2.81 kg) / Unit
 25 lb. (11.34 kg) / 4-Unit Master Pack
- R119-10, R119-12 7.2 lb. (3.27 kg) / Unit
 29 lb. (13.15 kg) / 4-Unit Master Pack

Materials of Construction

- Adjusting Screw, Springs** Steel
- Body, Spring Cage**Zinc
- Bottom Plug, Innervale** Brass
- Seals** Buna N

C
Product Selection
Filters
Coalescers
Regulators
Filter / Regulators
Lubricators
Combos
Accessories

