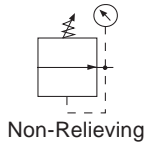
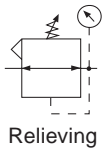
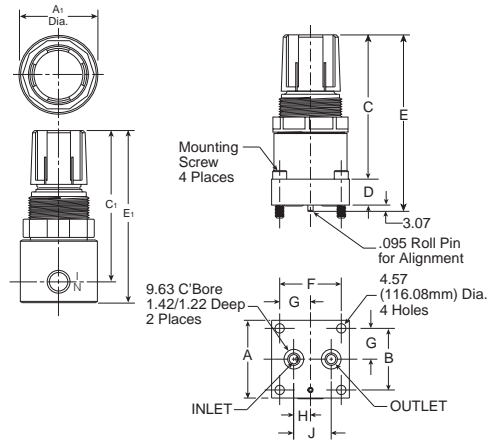


## R34 Regulators – Miniature



### Features

- Diaphragm operated for fast operation.
- Large Diaphragm to valve area ratio for precise regulation and high flow capacity.
- Balanced valve design for precise regulation.
- Available in 2 or 4 port design.
- Available with a manifold mount to minimize plumbing.
- Suitable for low temperature applications.
- Non-rising adjusting knob.
- 1/8" - 17 SCFM\*
- 1/4" - 19 SCFM\*



**R344-02C**



**R342-0MC**

R34 Miniature Regulator Dimensions				
<b>A</b> 1.50 (38.1)	<b>A1</b> 1.54 (39.2)	<b>B</b> 1.20 (30.5)	<b>B1</b> 1.56 (39.6)	<b>C</b> 2.75 (69.9)
<b>C1</b> 2.70 (68.6)	<b>D</b> 0.50 (12.7)	<b>E</b> 3.25 (82.6)	<b>E1</b> 3.25 (82.6)	<b>F</b> 1.20 (30.5)
<b>G</b> 0.60 (15.2)	<b>H</b> 0.32 (8.1)	<b>J</b> 0.73 (18.5)		

Model Type	Port Size	Without Gauge	Without Gauge	Without Gauge	With Gauge	With Gauge	With Gauge
		0 to 30 psig (0.0 to 2.1 bar)	0 to 60 psig (0.0 to 4.1 bar)	0 to 125 psig (0.0 to 8.6 bar)	0 to 30 psig (0.0 to 2.1 bar)	0 to 60 psig (0.0 to 4.1 bar)	0 to 125 psig (0.0 to 8.6 bar)
Relieving	1/8"	R344-01A	R344-01B	R344-01C	R344-01AG	R344-01BG	R344-01CG
	1/4"	R344-02A	R344-02B	<b>R344-02C</b>	R344-02AG	R344-02BG	<b>R344-02CG</b>
	Manifold Mount	R342-0MA	R342-0MB	<b>R342-0MC</b>			

\* SCFM = Standard cubic feet per minute at 100 psig inlet, 90 psig no flow secondary setting and 10 psig pressure drop.

### Ordering Information



<b>Number of Ports</b> 2 2 Ports 4* 4 Ports <small>* Not Available with Manifold Mount.</small>	<b>Thread</b> - NPT G BSPP	<b>Port</b> 01 1/8" 02 1/4" 0M Manifold Mount	<b>Pressure Range</b> A 0-30 PSI B 0-60 PSI C 0-125 PSI	<b>Options</b> Blank No Options G Gauge K Non-Relieving Diaphragm P Panel Mount Nut	<b>Options</b> Blank No Options L† Preset Non-Adjustable M† Preset Adjustable	<b>Preset / Pressure Limited</b> Blank None XXX* Preset Pressure XXX* Preset Pressure Limited
--	----------------------------------	--	--	---	--	--

† Inlet Pressure is 100 psig. For other pressures, contact factory.

\* Available Preset / Pressure Limited Range, 10 to 90 psig in 5 psig increments. For higher pressures, contact factory. (Example: 065 = 65 psig)

**BOLD ITEMS ARE MOST POPULAR.**



