

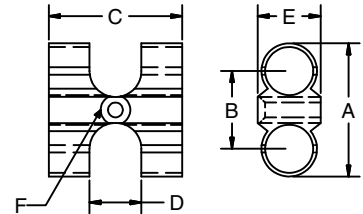
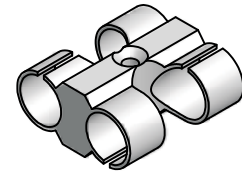
T-Clips

Application

Mounting element with two separate channels for fast, easy securing and routing of open wiring or tubing.

Technical Data

Glass Filled Nylon, Black
 Complete with screw and T-nut for 40 Series mounting.

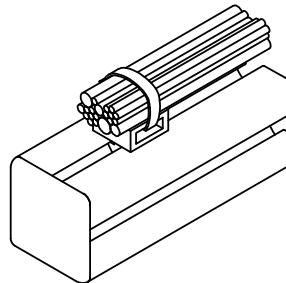


Ordering Information

Range (mm)	Dimensions (in)						Part #
	A	B	C	D	E	F	
6-8	20	12	20	8	9	3	22-206
8-10	25	15	24	10	12	4	22-208
10-13	31	18	28	12	12	4	22-210
13-16	35	21	36	14	17	4	22-212
16-19	44	25	43	17	20	5	22-215

Application

Mounting element provides point for cable tie mounting. Suitable for use on 40, 30, 28, 1.5" and 1" Series profiles.



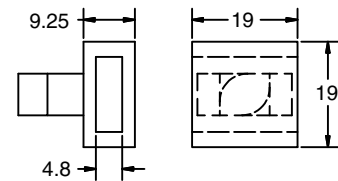
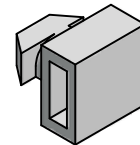
Technical Data

Glass Filled Nylon, Black
 Insert into T-slot and twist 90°

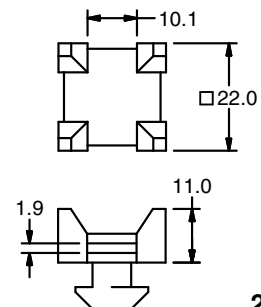
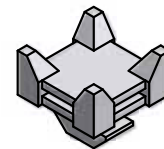
Ordering Information

Description	Unit	Weight	Part #
Cable Tie Holder, 40/1.5"	Each	4 g	22-202
Cable Tie Holder, 28/30	Each	4 g	22-201
Cross Cable Tie Holder, 40/1.5"	Each	4 g	27-202
Cross Cable Tie Holder, 1"	Each	4 g	27-203

Cable Tie Holder



22-202
 22-201



27-202
 27-203

