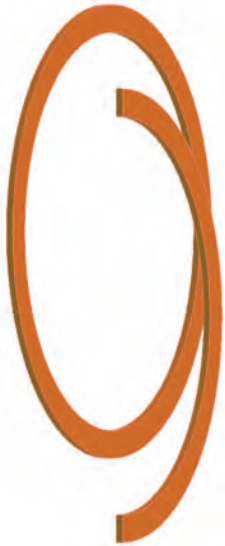


Back-up Ring PAB Profile

Catalog EPS 5370/USA



PAB Profile, Positively-Actuated Back-up

While modular back-ups require an increase in groove width to be incorporated into the sealing system, because they are integrated with the seal positively-actuated back-ups do not change the required axial groove width. For many pro les, these back-ups can provide the ultimate extrusion resistance while retaining the seal's original groove dimensions. While the most common material used to manufacture positively-actuated back-ups is nylon, it is not uncommon to see applications that require materials such as UltraCOMP™, PTFE or polyacetal.

Due to the nature of this product line and the design relationship between the back-up and the seal, parts are sold only as part of an assembly that includes the seal design best suited to the application.

Positively-actuated back-ups can be incorporated into pro les such as the BPP and BD. Tooling may be required.

Technical Data

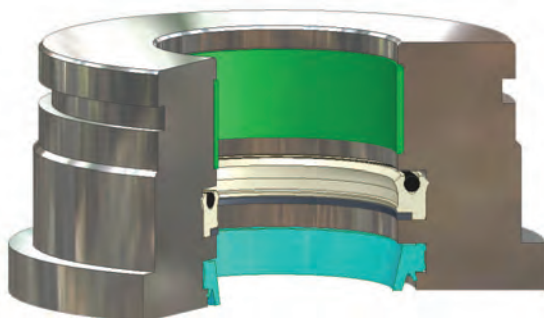
Standard Materials*	Temperature	Max. Pressure Range**
Rod		
R0 (Virgin PTFE)	-65°F to 250°F (-54°C to 121°C)	5,000 psi (344 bar)
R1 (Nylatron®)	-20°F to 250°F (-29°C to 121°C)	3,000 psi (206 bar)
R12 (PEEK)	-65°F to 500°F (-54°C to 260°C)	10,000 psi (689 bar)
Piston		
P0 (Virgin PTFE)	-65°F to 250°F (-54°C to 121°C)	5,000 psi (344 bar)
P1 (Nylatron)	-20°F to 250°F (-29°C to 121°C)	3,000 psi (206 bar)
P12 (PEEK)	-65°F to 500°F (-54°C to 260°C)	10,000 psi (689 bar)

* **Alternate Materials:** For applications that may require an alternate material, please contact your local Parker Seal representative.

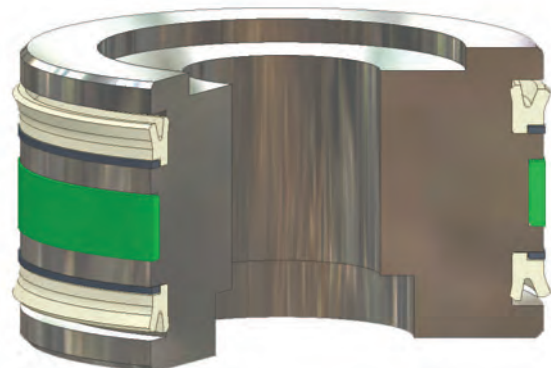
** 7,000 psi (482 bar) with tight-tolerance wear rings.
5,000 psi (344 bar) with standard-tolerance wear rings.



Positively-Actuated Cross-Section



Positively-Actuated installed in Rod Gland



Positively-Actuated installed in Piston Gland

10

09/01/07