

P A V C 1 0 0

ITEM	PART NUMBER	QTY	DESCRIPTION
1	786571	1	SHAFT SEAL
2	786420	1	BARREL
3	786804	1	BUSHING-BARREL
4	787411	1	SPRING-BARREL
5	786685	1	BALL SEAT
6	786684	1	SLIPPER RETAINER
7	786867	1	SWASH PLATE
8	786872	1	SERVO PISTON
9	787412	1	SPRING-SERVO
10	786870	2	TRUNNION PIN
11	786902	2	RETAINING RING
12	786966 $\odot$	1	TRUN. CAP ASSY.
13	800299	1	EYE BOLT
14	786865	1	SPRING-MODULATOR
15	786768	1	SPRING-UPSTROKE
16	786116	1	RETAINING-SPRING
17	787339 $\odot$	1	SPOOL & SLEEVE ASSY.
18	786946 $\odot$	1	AIRBLEED ASSY.
19	16X23	1	JAM NUT
20	2-025 $\odot$ -9	1	O-RING
21	2-166 $\odot$ -9	1	O-RING
22	99X81	2	ROLL PIN
23	99X127	2	ROLL PIN
24	108X4 $\odot$	3	PLUG
25	10X294	2	CAP SCREW
26	10X303	6	CAP SCREW
27	800511	1	NAME PLATE
28	56X357	1	SNAP RING
29	56X327	3	SNAP RING
30	39X10	2	DRIVE SCREW
31	108X2 $\odot$	2	PLUG

P

A

V

C

1

0

0

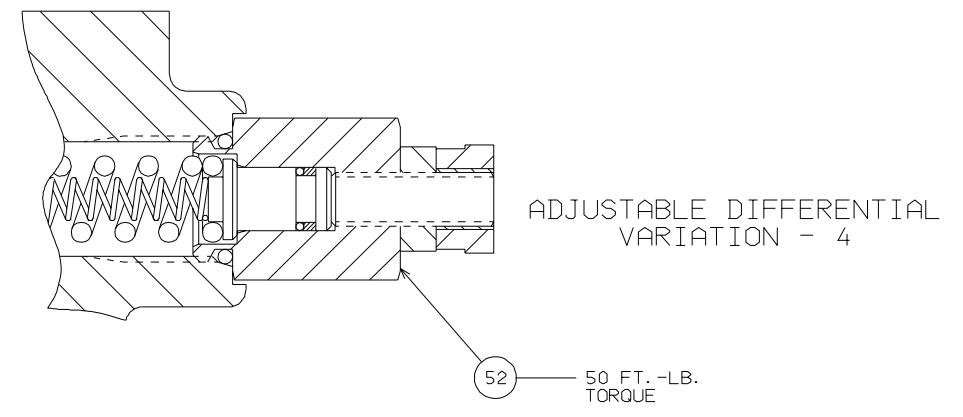
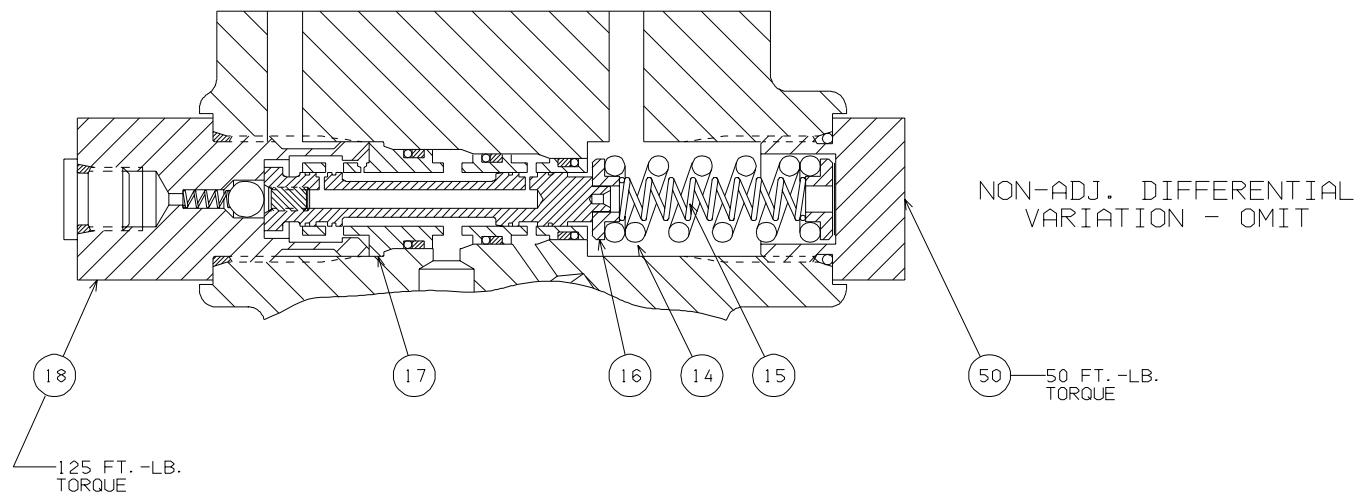
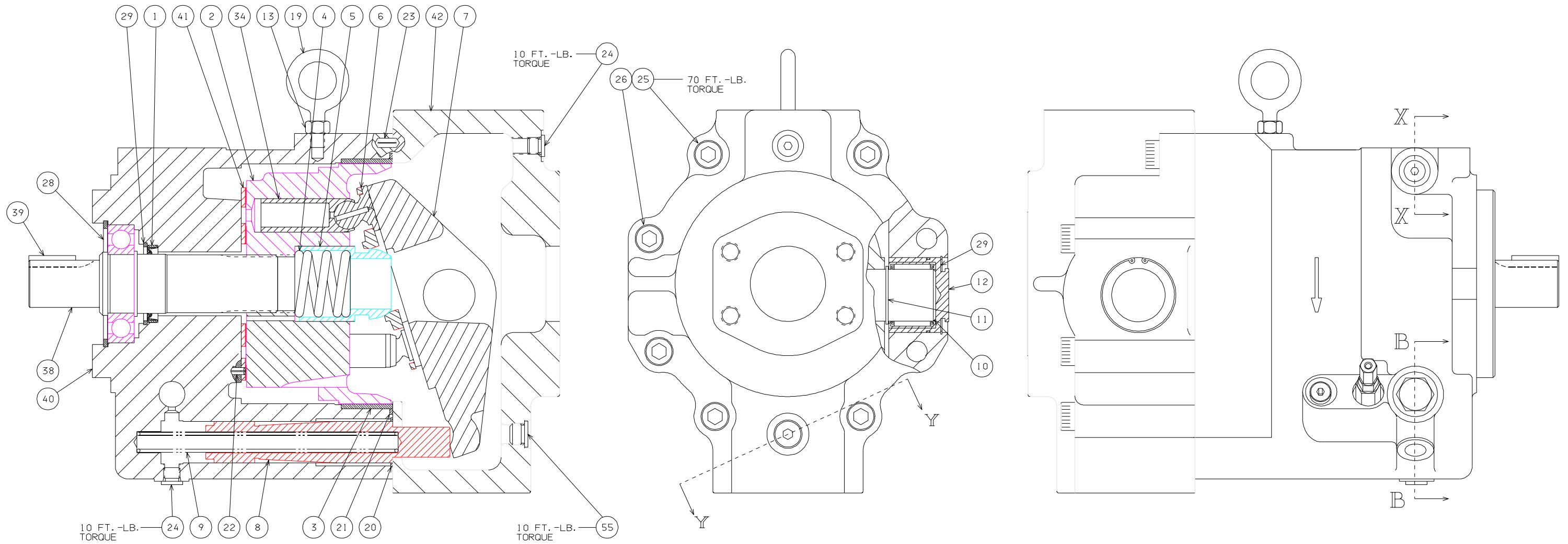
1

1

ITEM	PART NUMBER	QTY	DESCRIPTION	
OMIT	34	786576	9	PISTON ASSEMBLY
W	34	786801	9	PISTON ASSEMBLY

OMIT	38	786957	1	SHAFT-STRAIGHT ASSY
	39	22X31	1	KEY
B	38	786958	1	SHAFT SPLINE ASSY.
C	38	786959	1	SHAFT-STRAIGHT ASSY
	39	22X45	1	KEY
D	38	786960	1	SHAFT-SPLINE ASSY.

ITEM	PART NUMBER	QTY	DESCRIPTION	
OMIT	42	786973	1	TRUNNION HOUSING
	42	786974	1	TRUNNION HOUSING
	43	787020	1	THRU SHAFT PLUG
	44	2-234 $\odot$ -7	1	O-RING
2	45	786944	1	COVER PLATE
	46	787021	1	INLET COVER
	47	2-228 $\odot$ -9	1	O-RING
	48	12X291	2	BOLT
	49	12X253	4	BOLT

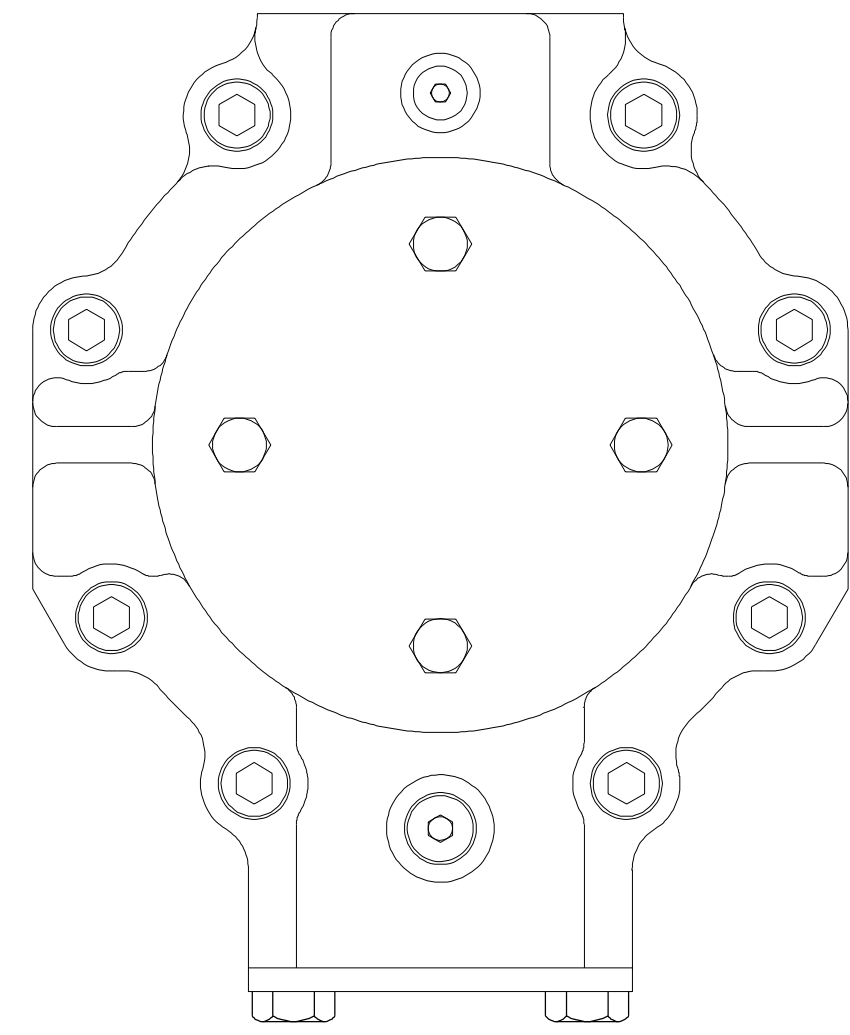
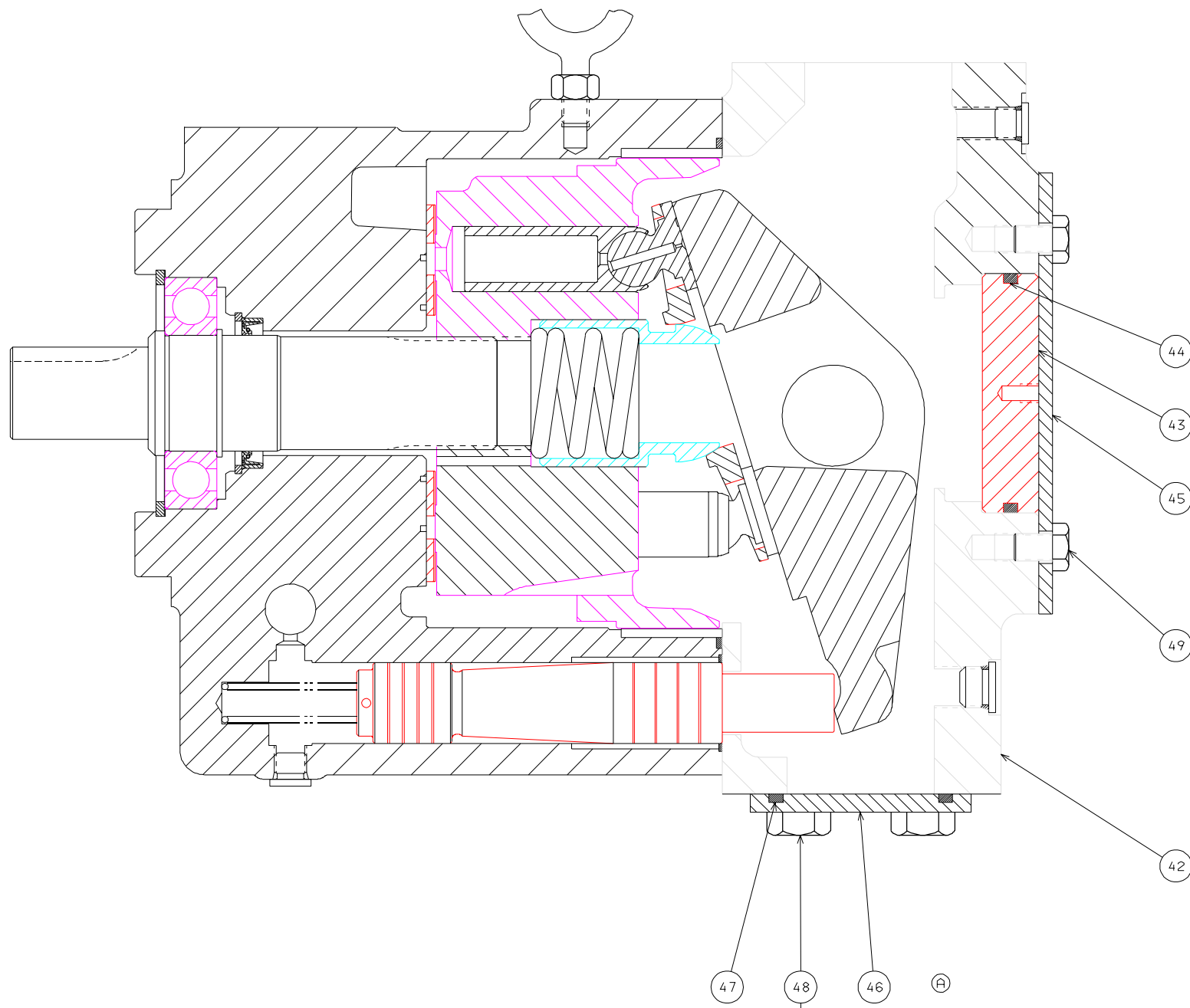


NOTES:

1. PUMP SHOWN WITH INLET PORT OPTION "OMIT" (REAR PORT)
2. PUMP SHOWN IS A CLOCKWISE ROTATION PUMP. COUNTERCLOCKWISE PUMP WILL HAVE OUTLET PORT, CONTROL DRAIN AND CONTROLS ON OPPOSITE SIDE.

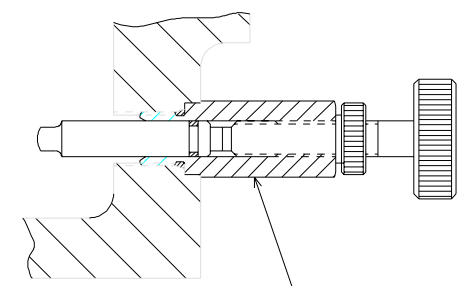
SECTION B-B  
SCALE 1.5

REV		ECR NO	SEE SHEET 1	CHG BY	DATE
DRAWN BY: L. BOSS		DATE: 10/2/89	Parker FLUIDPOWER PUMP DIVISION		
APP'D BY:		DATE:	SCALE: 3/4		
HEAT TREAT:		SUPERSEDES:	PART MUST CONFORM TO ENGR. STD'S: ES-M 1000		
FINISH:		MATERIAL:	DIMENSIONS ARE IN INCHES TOL. ON DEC. DIM'S. UNLESS OTHERWISE SPECIFIED:		
			1 PLACE (.01) ± .060		
			2 PLACE (.001) ± .030		
			3 PLACE (.000) ± .010		
			ANGLES ± 2°		
SHEET 2 OF 5		DRAWING NO. MD787422	REV. A		STATUS SS
		TITLE: SERVICE PARTS - PAVC100/20			



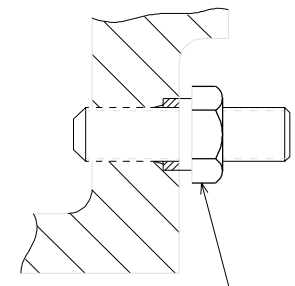
49 15 FT.-LB. TORQUE

47 48 46  
40 FT.-LB. TORQUE



57 17 FT.-LB. TORQUE

MAXIMUM VOLUME STOP WITH O-RING SEAL VARIATION - 5



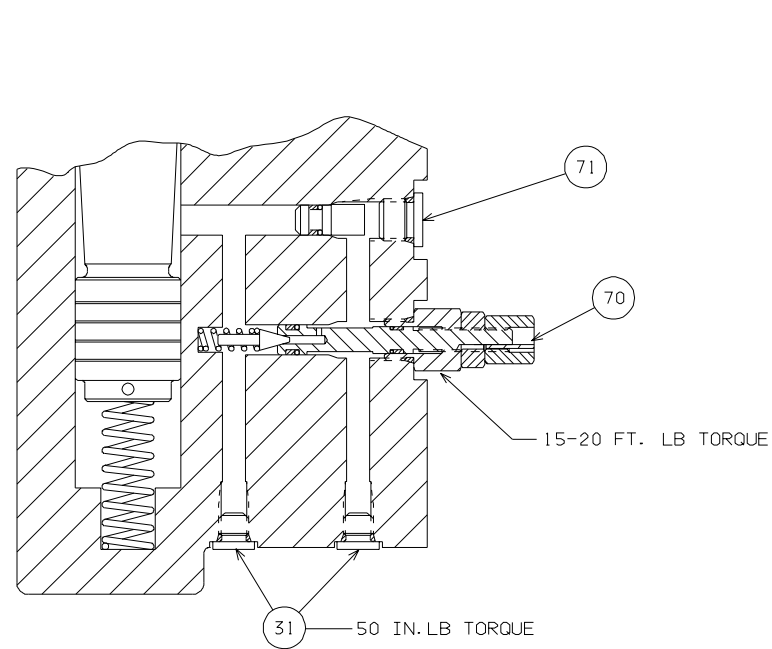
56 30 FT.-LB. TORQUE

MAXIMUM VOLUME STOP VARIATION - 2

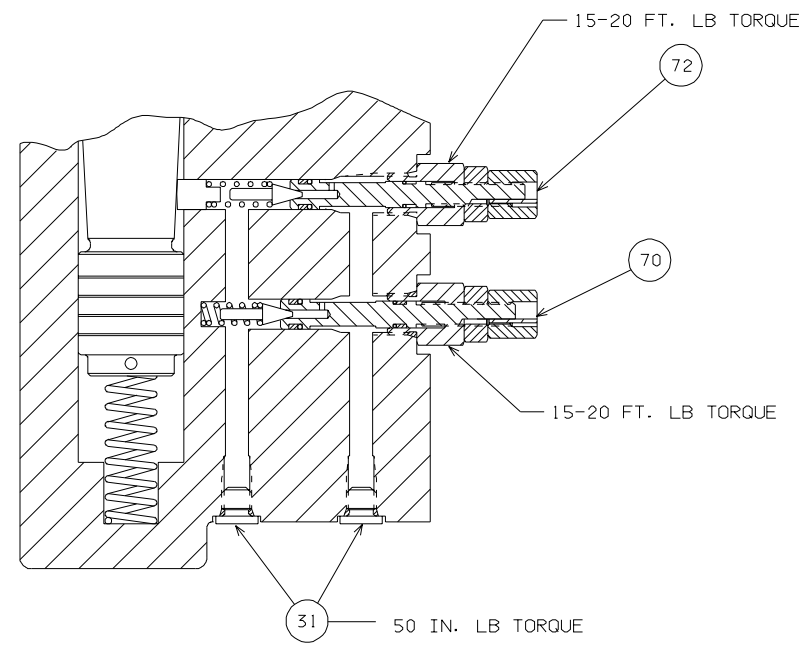
NOTE:  
1. PUMP SHOWN WITH INLET PORT OPTION "2" (TOP/BOTTOM PORTS).

HEAT TREAT:	SUPERSEDES:	PART MUST CONFORM TO ENGR. STD'S: ES-M 1000
FINISH:	SUPERSEDED BY:	DIMENSIONS ARE IN INCHES TOL. ON DEC. DIM'S. UNLESS OTHERWISE SPECIFIED:
	MATERIAL:	1 PLACE (.0) ± .060 2 PLACE (.00) ± .030 3 PLACE (.000) ± .010 ANGLES ± 2°

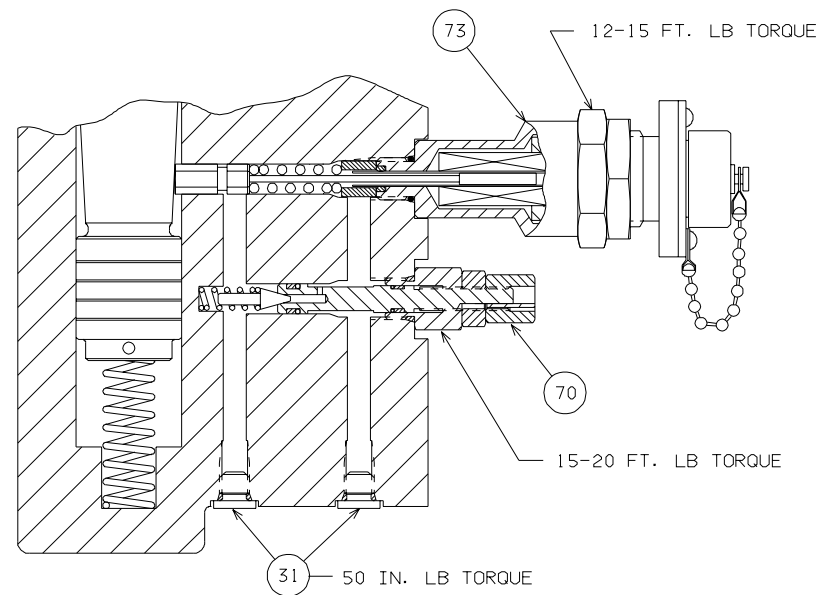
SEE SHEET 1		REV	ECR NO	REVISION	CHG BY	DATE
DRAWN BY:	DATE:	FLUIDPOWER PUMP DIVISION				
L. BASS	10/2/89	Parker				
APP'D BY:	DATE:	SERVICE PARTS - PAVC100/20				
SCALE:	FULL	SHEET 3 OF 5				
DRAWING NO. MD787422		REV. A	STATUS SS			



CONTROL OPTION OMIT, A.M., ME & AM  
SECTION Y-Y

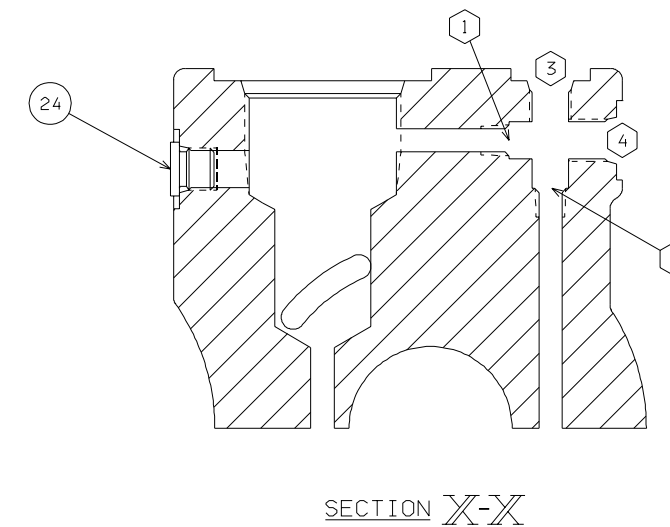


CONTROL OPTION C, H, CM & HM  
SECTION Y-Y



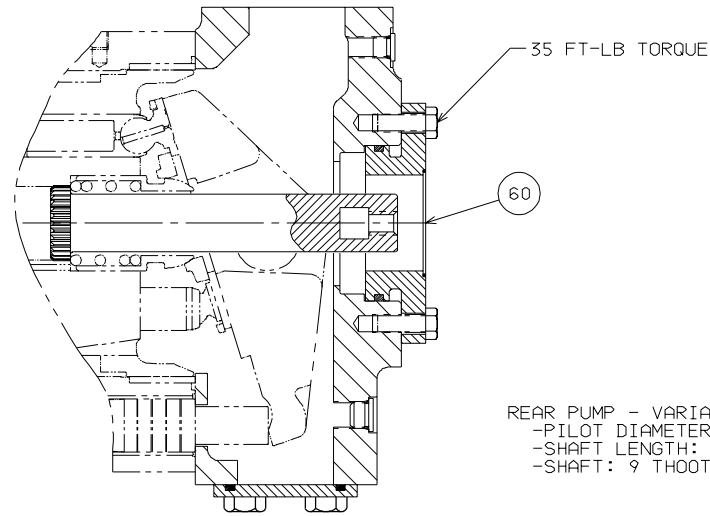
CONTROL OPTION S & SE  
SECTION Y-Y

CONTROL OPTION	POSITION			
	1	2	3	4
OMIT	OPEN	690870	108X4	108X4
A	102X1	690870	OPEN	108X4
C	102X1	690870	OPEN	108X4
H	OPEN	690870	108X4	108X4
M	690870	OPEN	OPEN	108X4
ME	102X1	690870	OPEN	108X4
S	690870	OPEN	OPEN	108X4
SE	102X1	690870	OPEN	108X4
AM	102X1	690870	786635	OPEN
CM	102X1	690870	786635	OPEN
HM	690870	OPEN	OPEN	108X4

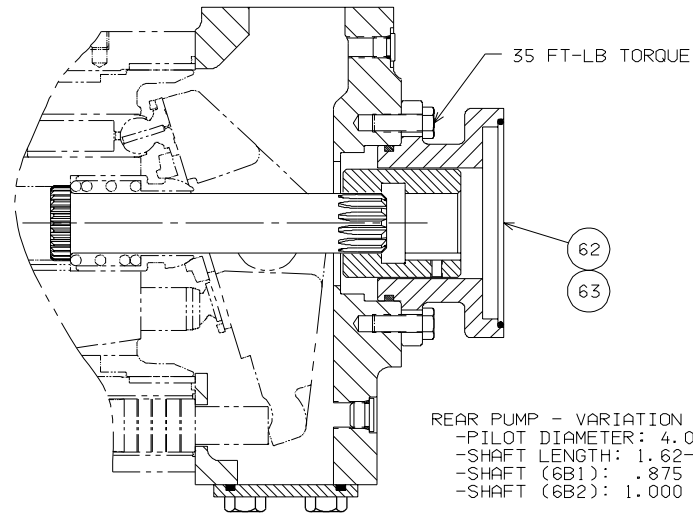


HEAT TREAT:	SUPERSEDES:	PART MUST CONFORM TO ENGR. STD'S: ES-M 1000
	SUPERSEDED BY:	DIMENSIONS ARE IN INCHES TOL. ON DEC. DIM'S, UNLESS OTHERWISE SPECIFIED:
FINISH:	MATERIAL:	1 PLACE (.0) ± .060 2 PLACE (.00) ± .030 3 PLACE (.000) ± .010 ANGLES ± 2°

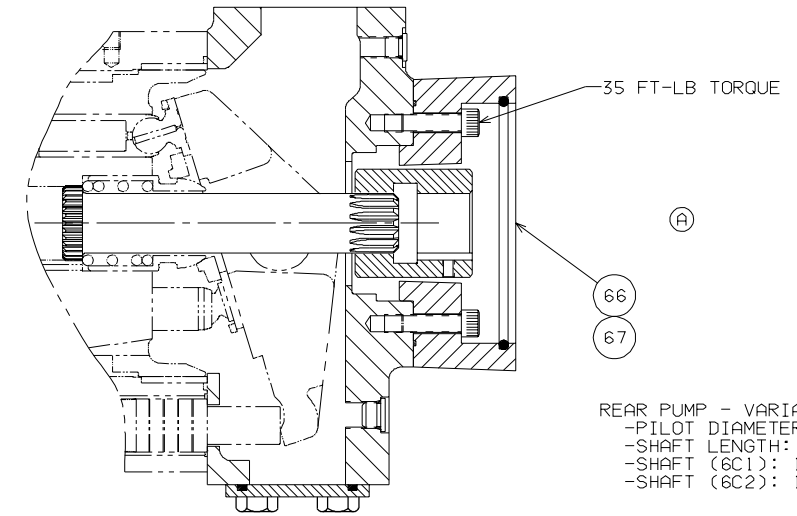
SEE SHEET 1		REV.	DATE
REV.	ECR NO.	REVISION	CHG BY
DATE:	DATE:	FLUIDPOWER PUMP DIVISION	
DATE:	DATE:	Parker	
SCALE:	FULL	TITLE: SERVICE PARTS - PAVC100/20	
SHEET 4 OF 5		DRAWING NO. MD787422	REV. STATUS A SS



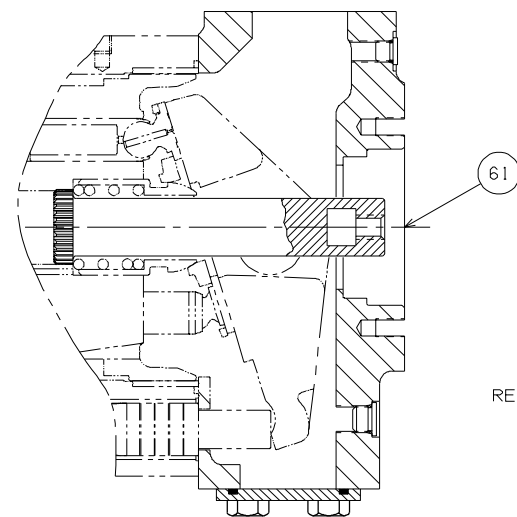
REAR PUMP - VARIATION "6A3"  
 -PILOT DIAMETER: 2.000  
 -SHAFT LENGTH: 1.00-1.50  
 -SHAFT: 9 TOOTH 20/40 PITCH



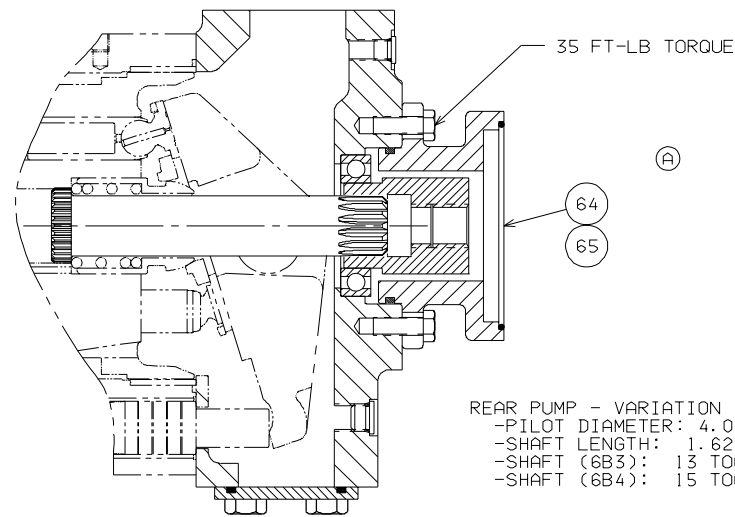
REAR PUMP - VARIATION "6B1" & "6B2"  
 -PILOT DIAMETER: 4.000  
 -SHAFT LENGTH: 1.62-2.31  
 -SHAFT (6B1): .875 X .250 KEY  
 -SHAFT (6B2): 1.000 X .250 KEY



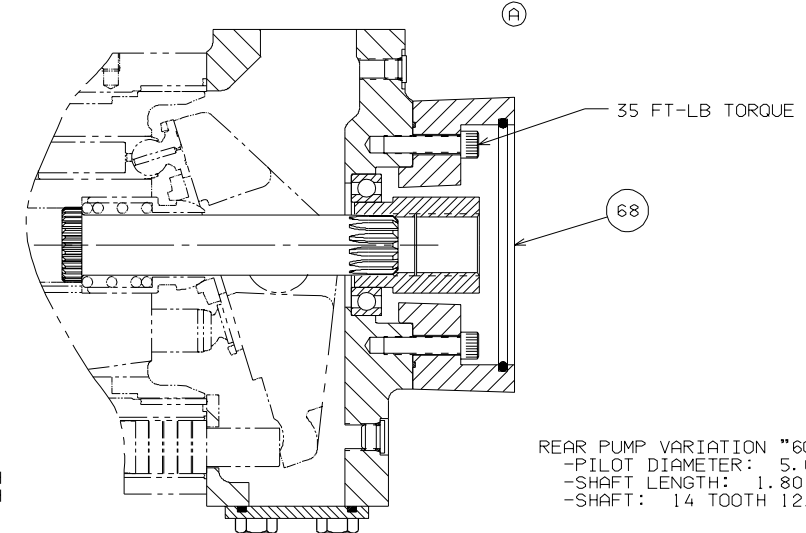
REAR PUMP - VARIATION "6C1" & "6C2"  
 -PILOT DIAMETER: 5.000  
 -SHAFT LENGTH: 1.80-2.20  
 -SHAFT (6C1): 1.000 X .250 KEY  
 -SHAFT (6C2): 1.250 X .312 KEY



REAR PUMP - VARIATION "6A4"  
 -PILOT DIAMETER: 3.250  
 -SHAFT LENGTH: 1.25 - 1.40  
 -SHAFT: 9 TOOTH 16/32 PITCH



REAR PUMP - VARIATION "6B3" & 6B4"  
 -PILOT DIAMETER: 4.000  
 -SHAFT LENGTH: 1.62 - 2.31  
 -SHAFT (6B3): 13 TOOTH 16/32 PITCH  
 -SHAFT (6B4): 15 TOOTH 16/32 PITCH



REAR PUMP VARIATION "6C3"  
 -PILOT DIAMETER: 5.000  
 -SHAFT LENGTH: 1.80 - 2.20  
 -SHAFT: 14 TOOTH 12/24 PITCH

REV	ECR NO	REVISION	CHG BY	DATE

SEE SHEET 1

SCALE: 1/2

FLUIDPOWER PUMP DIVISION

TITLE: SERVICE PARTS - PAVC100/20

DRAWING NO. MD787422

SHEET 5 OF 5

REV. A

STATUS SS

HEAT TREAT:	SUPERSEDES:	PART MUST CONFORM TO ENGR. STD'S: ES-M 1000
FINISH:	SUPERSEDED BY:	DIMENSIONS ARE IN INCHES TOL. ON DEC. DIM'S, UNLESS OTHERWISE SPECIFIED:
	MATERIAL:	1 PLACE (.0) ± .060
		2 PLACE (.00) ± .030
		3 PLACE (.000) ± .010
		ANGLES ± 2°