

ITEM	PART NUMBER	QTY	DESCRIPTION	
DMIT	1	787549	1	SHAFT SEAL
2	787420	1	BARREL	
3	786804	1	BUSHING-BARREL	
4	787411	1	SPRING-BARREL	
5	786685	1	BALL SEAT	
6	786684	1	SLIPPER RETAINER	
7	786867	1	SWASH PLATE	
8	786872	1	SERVO PISTON	
9	787412	1	SPRING-SERVO	
10	786870	2	TRUNNION PIN	
11	786568	1	BEARING - BALL	
12	786966	1	TRUN. CAP ASSY.	
13	800299	1	EYE BOLT	
14	786865	1	SPRING-MODULATOR	
15	787474	1	SPRING-UPSTROKE	
16	786116	1	RETAINER-SPRING	
17	787339	1	SPOOL & SLEEVE ASSY.	
18	786946	1	AIRBLEED ASSY.	
19	16X23	1	JAM NUT	
20	2025-9	1	O-RING	
21	2166-9	1	O-RING	
22	99X81	2	ROLL PIN	
23	99X127	2	ROLL PIN	
24	108X4	3	PLUG - SAE	
24	788516-04	3	PLUG - 6149	
26	10X303	8	CAP SCREW	
27	800511	1	NAME PLATE	
28	56X357	1	SNAP RING	
29	56X327	2	SNAP RING	
30	39X10	2	DRIVE SCREW	
31	108X2	2	PLUG	
32	56X329	1	SNAP RING	
33	2152N-7	1	O-RING	
34	789516	9	PISTON ASSEMBLY	

ITEM	PART NUMBER	QTY	DESCRIPTION	
DMIT	42	786973	1	TRUNNION HOUSING - SAE
42	786974	1	TRUNNION HOUSING - SAE	
43	787020	1	THRU SHAFT PLUG	
44	2234-7	1	O-RING	
45	786944	1	COVER PLATE	
46	787844	1	INLET COVER	
47	2228-9	1	O-RING	
48	12X291	4	BOLT	
49	12X253	4	BOLT	
42	788620	1	TRUNNION HOUSING - 6149	
43	787020	1	THRU SHAFT PLUG	
44	2234-7	1	O-RING	
45	786944	1	COVER PLATE	
46	787844	1	INLET COVER	
47	2228-9	1	O-RING	
48	212X228	4	BOLT	
49	212X201	4	BOLT	

ITEM	PART NUMBER	QTY	DESCRIPTION		
DMIT	R	40	787558	1	FRONT HOUSING - SAE
DMIT	L	40	787559	1	FRONT HOUSING - SAE
DMIT	R	40	788616	1	FRONT HOUSING - 6149
DMIT	L	40	788617	1	FRONT HOUSING - 6149
DMIT	R	40	787556	1	FRONT HOUSING - SAE
DMIT	L	40	787557	1	FRONT HOUSING - SAE
DMIT	R	40	788618	1	FRONT HOUSING - 6149
DMIT	L	40	788619	1	FRONT HOUSING - 6149

ITEM	PART NUMBER	QTY	DESCRIPTION	
DMIT	38	787592	1	SHAFT-STRAIGHT ASSY
DMIT	39	22X31	1	KEY
B	38	787593	1	SHAFT SPLINE ASSY.
C	38	787594	1	SHAFT-STRAIGHT ASSY
C	39	22X45	1	KEY
D	38	787595	1	SHAFT-SPLINE ASSY.
DMIT	38	787613	1	SHAFT-STRAIGHT ASSY
DMIT	39	22X31	1	KEY
B	38	787572	1	SHAFT-SPLINE ASSY.
C	38	787573	1	SHAFT-STRAIGHT ASSY
C	39	22X45	1	KEY
D	38	787574	1	SHAFT-SPLINE ASSY.
80	787401	1	IDLER SHAFT	
81	787550	1	NEEDLE BEARING	

ITEM	PART NUMBER	QTY	DESCRIPTION	
DMIT			NO THRU SHAFT OPTION	
6A1	59	787851	1	ADAPTER KIT "AA"
6A3	60	786925	1	ADAPTER KIT "AA"
6A4	61	786926	1	ADAPTER KIT "A"
6B1	62	786927	1	ADAPTER KIT "B"
6B2	63	786932	1	ADAPTER KIT "BB"
6B3	64	787076	1	ADAPTER KIT "B"
6B4	65	787077	1	ADAPTER KIT "BB"
6C2	67	786928	1	ADAPTER KIT "C"
6C3	68	787078	1	ADAPTER KIT "C"
9A1	59	788628	1	ADAPTER KIT "AA"
9A3	60	788629	1	ADAPTER KIT "AA"
9A4	61	788630	1	ADAPTER KIT "A"
9B1	62	788631	1	ADAPTER KIT "B"
9B2	63	788632	1	ADAPTER KIT "BB"
9B3	64	788633	1	ADAPTER KIT "B"
9B4	65	788634	1	ADAPTER KIT "BB"
9C2	67	788635	1	ADAPTER KIT "C"
9C3	68	788636	1	ADAPTER KIT "C"

ITEM	PART NUMBER	QTY	DESCRIPTION	
DMIT	55	108X6	1	PLUG
2	56	786954	1	MAX. VOL. STOP* VAR. 2" ASSY
5	57	786955	1	MAX. VOL. STOP* VAR. 5" ASSY

ITEM	PART NUMBER	QTY	DESCRIPTION	
DMIT	50	786949	1	NON-ADJ. DIFF. ASSY
4	52	786950	1	ADJ. DIFF. ASSY

ITEM	PART NUMBER	QTY	DESCRIPTION	
R	41	786678	1	PORT PLATE
L	41	786680	1	PORT PLATE

ITEM	PART NUMBER	QTY	DESCRIPTION
22			PUMP DESIGN SERIES

ITEM	PART NUMBER	QTY	DESCRIPTION
DMIT			DO NOT PAINT PUMP
P			PAINT PUMP

ITEM	PART NUMBER	QTY	DESCRIPTION
DMIT			NITRILE SEALS

ITEM	PART NUMBER	QTY	DESCRIPTION
70	786952		PRESS COMP. ASSY
71	786953		TORQUE PLUG ASSY
72	786951		TORQUE CONTROL ASSY
73	786956		SERVO CONTROL ASSY
74	102X1		PIPE PLUG
24	108X4		STRAIGHT PLUG
76	690870		ORIFICE PLUG
77	786635		ORIFICE FITTING
77	788873		ORIFICE FITTING

REFER TO SECTION X-X  
& SECTION Y-Y  
(SHEET 5 OF 6)  
FOR LOCATION & COMBINATION  
OF ABOVE COMPONENTS

NOTES:

1 VARIATION "5" NOT AVAILABLE WITH THRU-SHAFT ADAPTER KITS LARGER THAN AN SAE "A" MOUNTING.

2. SEAL KIT P/N SKPAVC100\*\* (\*\* - DESIGN SERIES)

3. ROTATING GROUP KIT RRPKAVC100\*\* (\*\* - DESIGN SERIES)

R (CW)  
L (CCW)

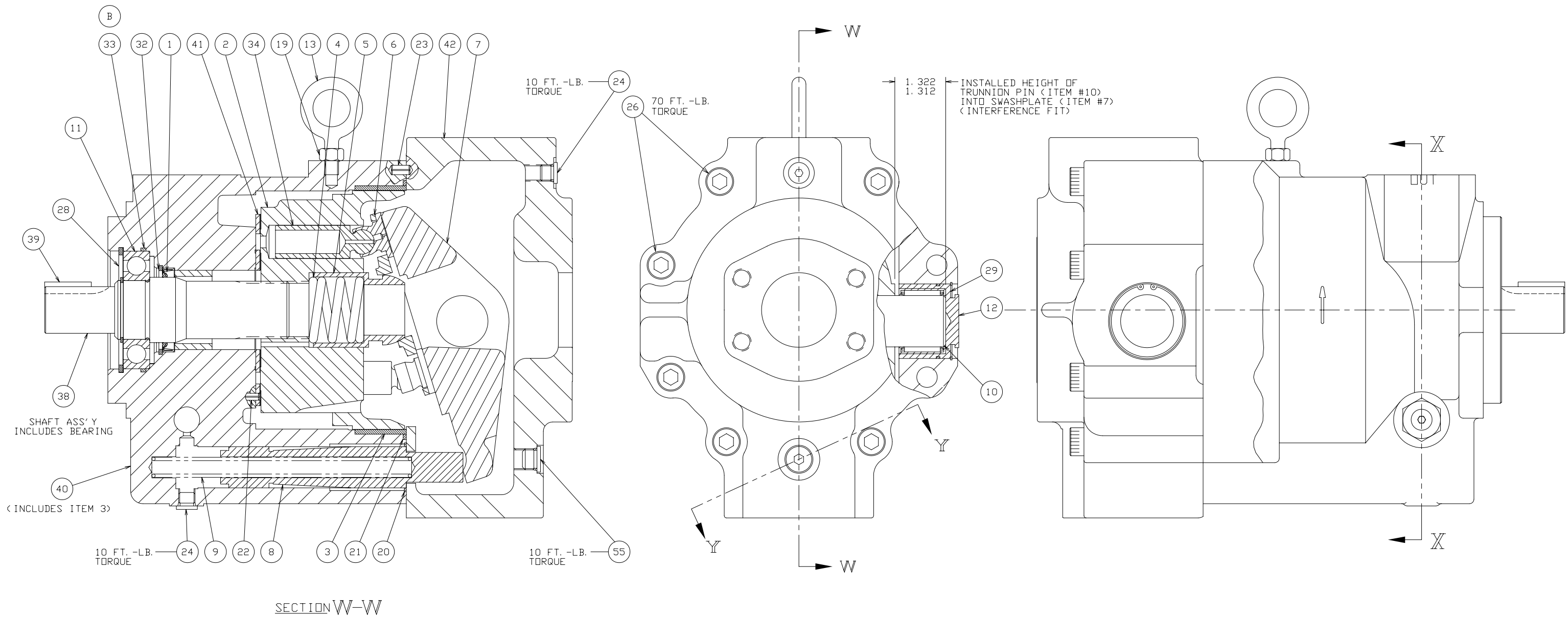
REV	ECN NO	REVISION	CHG BY	DATE
D	134235	SEE ECN	EDB	4/26/04
C	133985	SEE ECN	EDB	8/25/03
B	131925	ADD ITEM 33&DRIF. FTNG	MHS	9/15/98
A	131151	ADD OPTION "8"	BDL	3/26/97
-	130347	RELEASE TO PR	LCB	2/8/95

DRAWN BY:	DATE:	APPROVED:	DATE:
L. BASS	4/3/89		



SERVICE PARTS - PAVC100/22

HEAT TREAT:	SUPERSEDES:	PART MUST CONFORM TO ENGR. STD'S: ESM 1000	TITLE:
-	-	ANST. STD. Y14.5-1994 APPLIES EXCEPT WHEN NO MODIFIER IS SPECIFIED.	SERVICE PARTS - PAVC100/22
FINISH:	MATERIAL:	ALL DIMENSIONS ARE IN INCHES. TOLERANCE ON DECIMAL DIMENSIONS IS AS FOLLOWS, UNLESS OTHERWISE SPECIFIED:	SHEET NO. 1 OF 6
-	-	1 PLACE (.01) ± .060 2 PLACE (.00) ± .030 3 PLACE (.000) ± .010	SIZE D
		ANGLES ± 2°	DRAWING NO. 788270
			REV. D
			STATUS PR



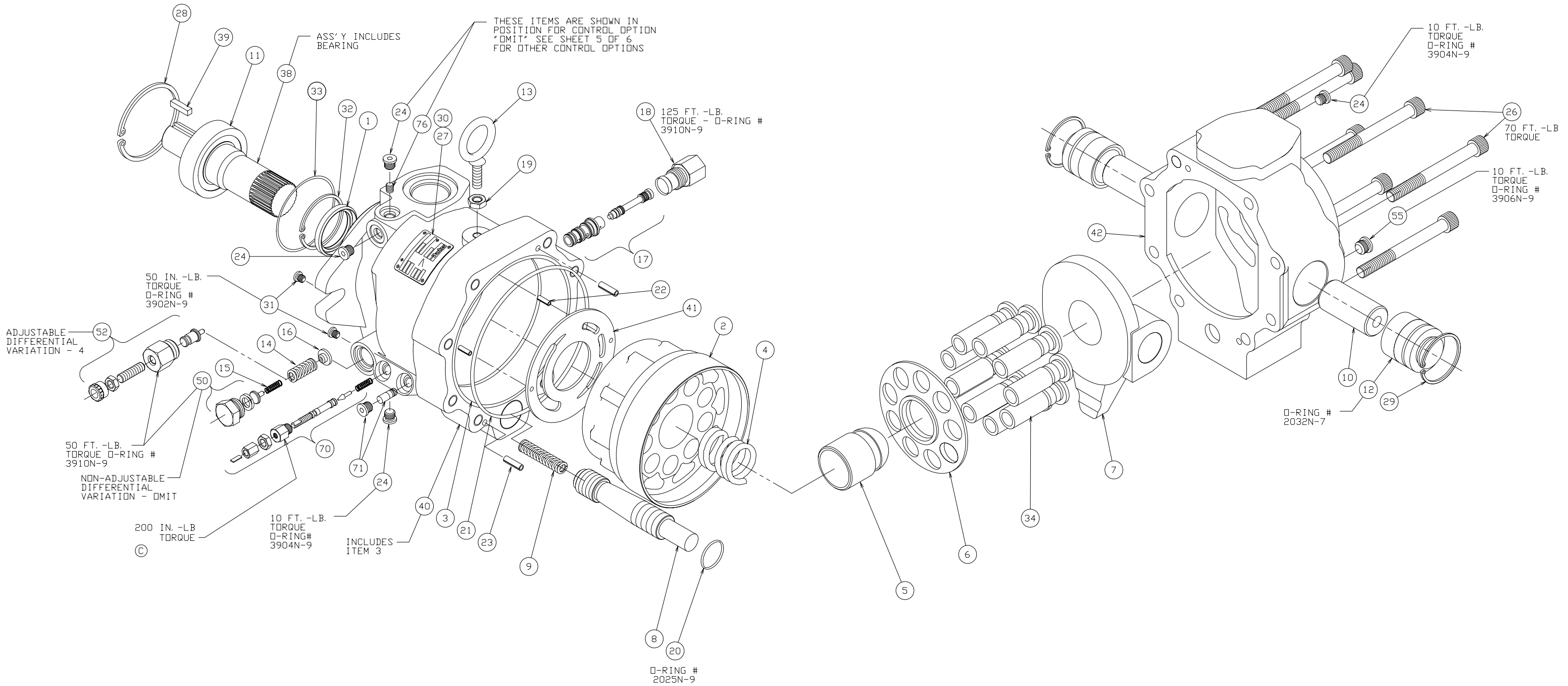
NOTES:

1. PUMP SHOWN WITH INLET PORT OPTION "OMIT" (REAR PORT)
2. PUMP SHOWN IS A CLOCKWISE ROTATION PUMP. COUNTERCLOCKWISE PUMP WILL HAVE OUTLET PORT, CONTROL DRAIN AND CONTROLS ON OPPOSITE SIDE.

REV	ECN NO	SEE SHEET 1	CHG BY	DATE
L. BASS	10/2/89			
DRAWN BY:		DATE:		
APPROVED:		DATE:		
SCALE:		-		
SUPERSEDES:		-		
SUPERSEDED BY:		-		
MATERIAL:		-		
FINISH:		-		

HEAT TREAT:	-	PART MUST CONFORM TO ENGR. STD'S: ESM 1000 ANST. STD. Y14.8-1994 APPLIES EXCEPT MMC APPLIES TO POSITIONAL TOLERANCES WHEN NO MODIFIER IS SPECIFIED.
ALL DIMENSIONS ARE IN INCHES. TOLERANCE ON DECIMAL DIMENSIONS IS AS FOLLOWS, UNLESS OTHERWISE SPECIFIED:		
1 PLACE	(.0) ± .060	
2 PLACE	(.00) ± .000	
3 PLACE	(.000) ± .010	ANGLES ± 2°

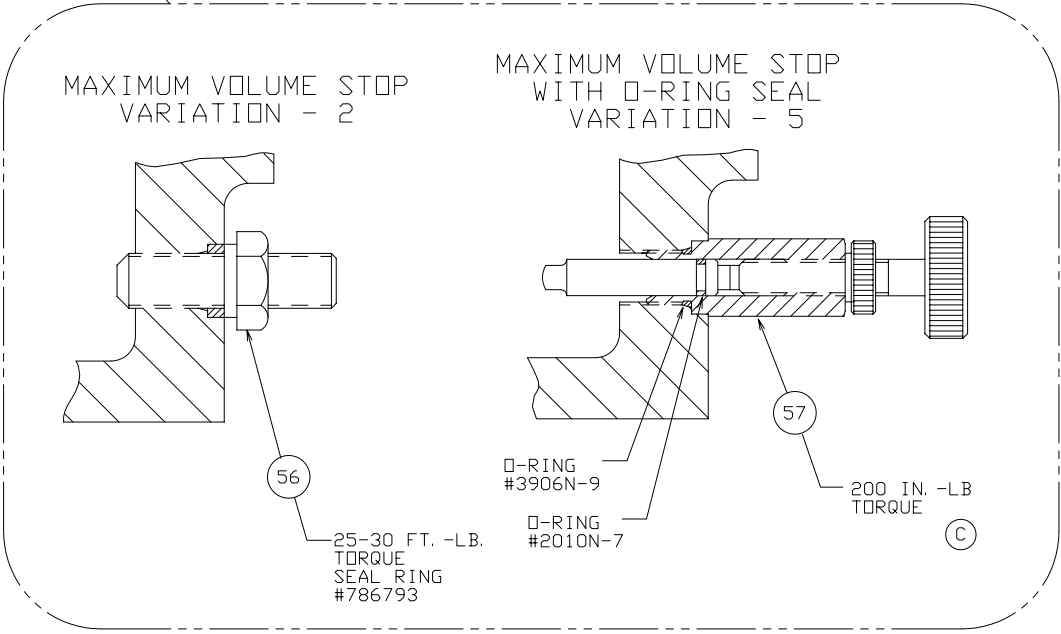
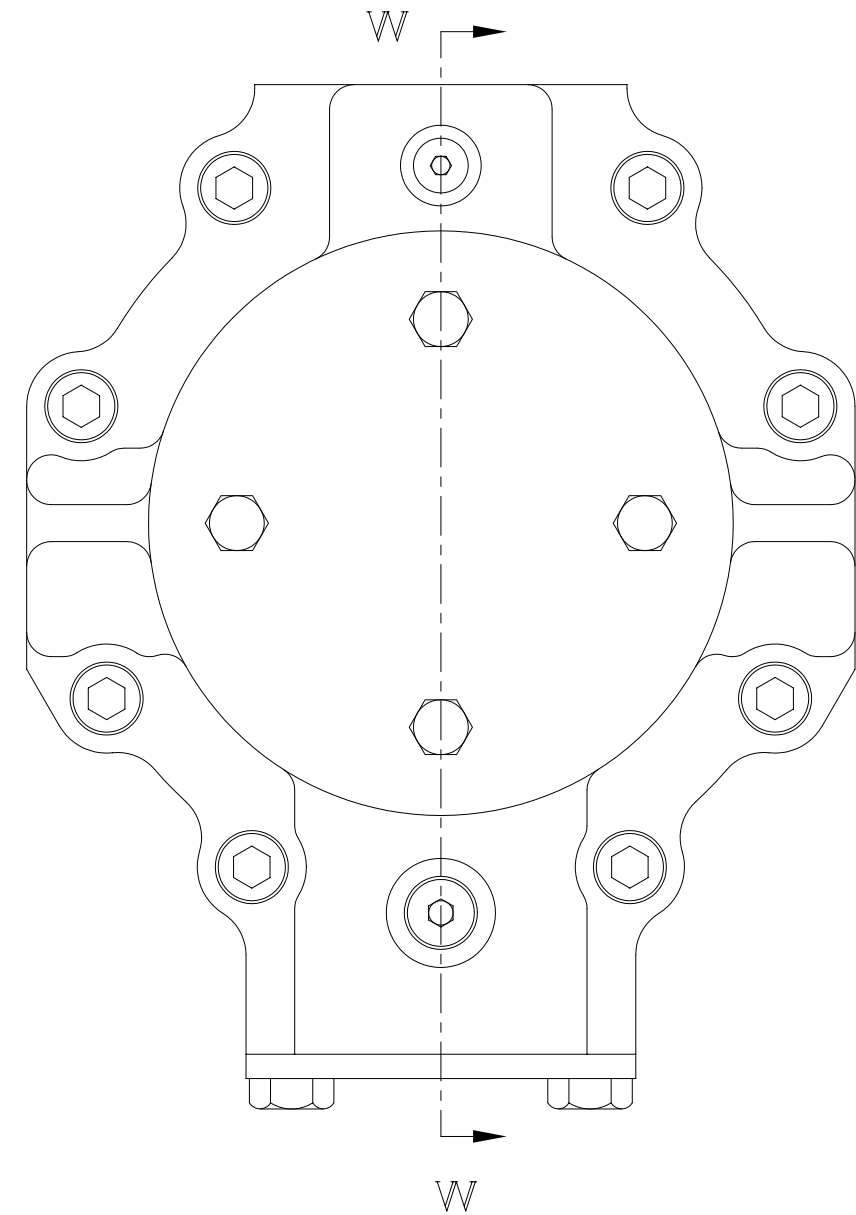
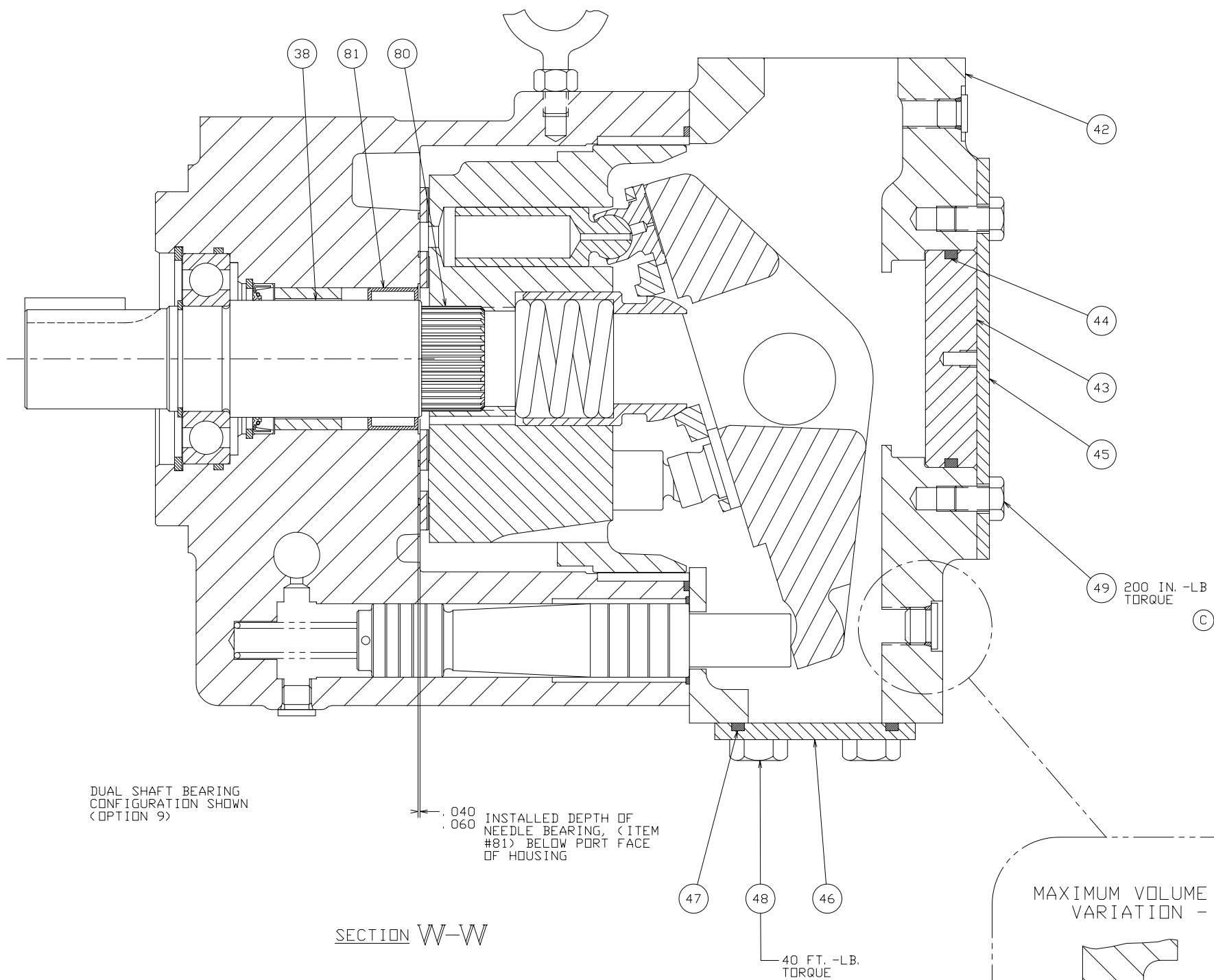
TITLE: SERVICE PARTS - PAVC100/22				
SHEET NO.	SIZE	DRAWING NO.	REV.	STATUS
2 OF 6	D	788270	D	PR



REV	ECN NO	SEE SHEET 1	CHG BY	DATE
1				
DRAWN BY: L. BASS		DATE: 1/26/95		
APPROVED:		DATE:		
SCALE:		-		
SUPERSEDES:		-		
SUPERSEDED BY:		-		
MATERIAL:		-		
FINISH:		-		
HEAT TREAT:		-		

PART MUST CONFORM TO ENGR. STD'S: ESM 1000  
 ANST. STD. Y14.5-1994 APPLIES EXCEPT  
 HMC APPLIES TO POSITIONAL TOLERANCES  
 WHEN NO MODIFIER IS SPECIFIED.  
 ALL DIMENSIONS ARE IN INCHES.  
 TOLERANCE ON DECIMAL DIMENSIONS IS AS  
 FOLLOWS, UNLESS OTHERWISE SPECIFIED:  
 1 PLACE (.0) ± .060  
 2 PLACE (.00) ± .030  
 3 PLACE (.000) ± .010  
 ANGLES ± 2°

TITLE: SERVICE PARTS - PAVC100/22				
SHEET NO:	SIZE:	DRAWING NO.:	REV.:	STATUS:
3 OF 6	D	788270	D	PR



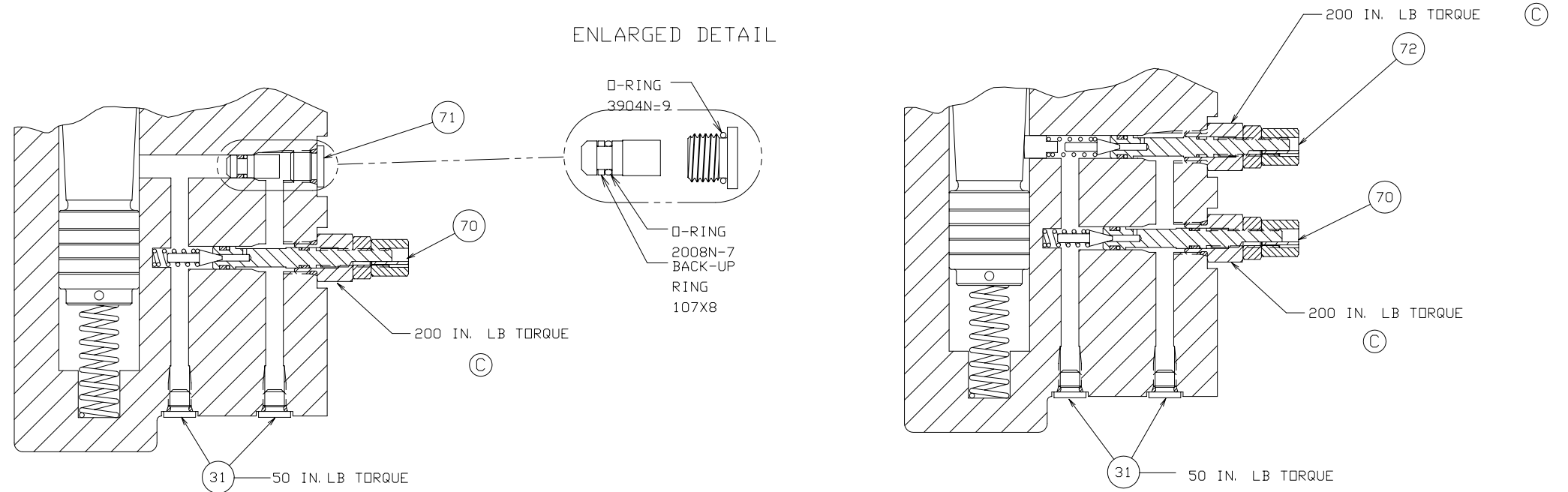
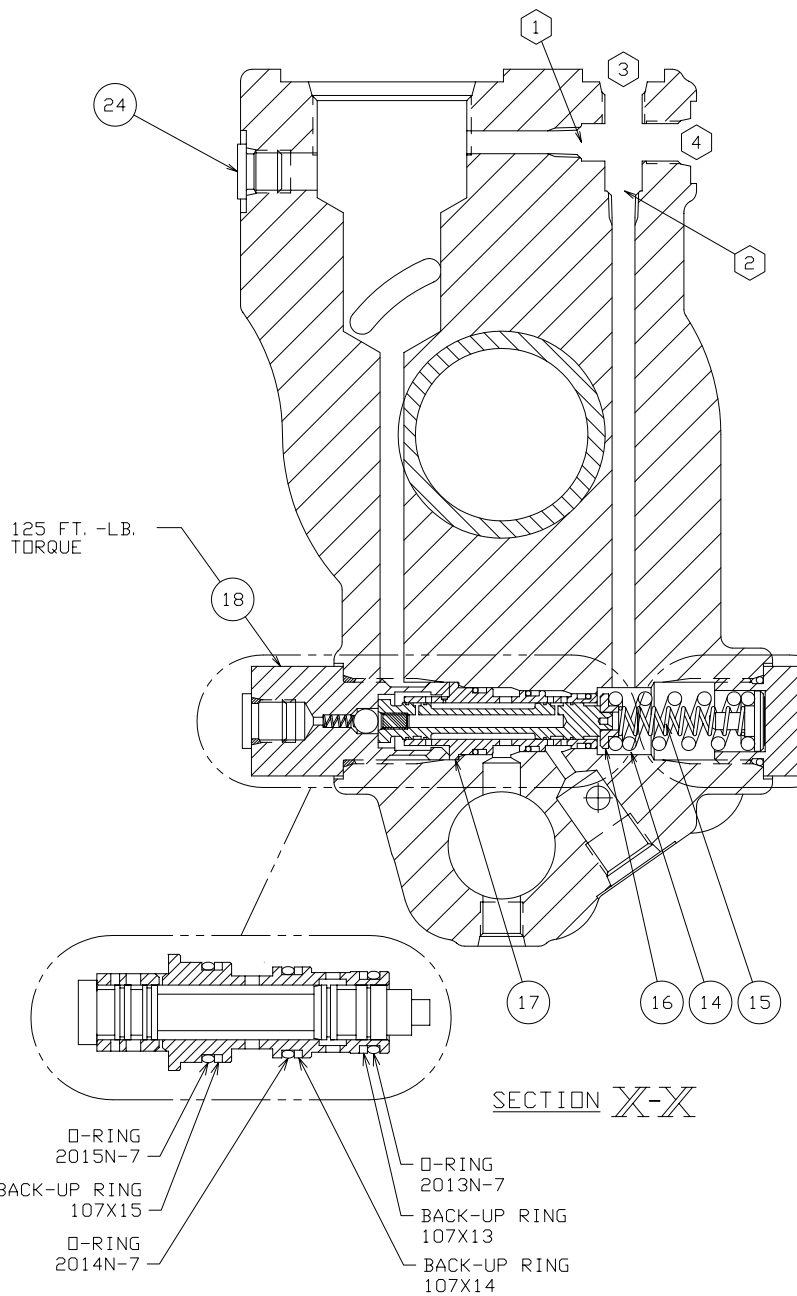
NOTE:  
1. PUMP SHOWN WITH INLET PORT OPTION "2" (TOP/BOTTOM PORTS).

REV	ECN NO	SEE SHEET 1	CHG BY	DATE
---	---	---	---	---
DRAWN BY: L. BASS		REVISION		
DATE: 10/2/89		CHG BY		
APPROVED:		DATE:		
---		---		
SCALE:		---		
---		---		
HYDRAULIC PUMP/MOTOR DIV				
TITLE: SERVICE PARTS - PAVC100/22				
SHEET NO:	SIZE	DRAWING NO.	REV.	STATUS
4 OF 6	D	788270	D	PR

HEAT TREAT:	SUPERSEDES:	PART MUST CONFORM TO ENGR. STD'S: ESM 1000 ANST. STD. Y14.9-1994 APPLIES EXCEPT WHC APPLIES TO POSITIONAL TOLERANCES WHEN NO MODIFIER IS SPECIFIED.
---	---	---
FINISH:	SUPERSEDED BY:	ALL DIMENSIONS ARE IN INCHES. TOLERANCE ON DECIMAL DIMENSIONS IS AS FOLLOWS, UNLESS OTHERWISE SPECIFIED:
---	---	1 PLACE (.01) ± .060 2 PLACE (.00) ± .030 3 PLACE (.000) ± .010
	MATERIAL:	ANGLES ± 2°
	---	---

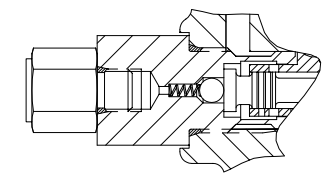
CONTROL OPTION	POSITION			
	1	2	3	4
OMIT	OPEN	690870	108X4	108X4
A	102X1	690870	OPEN	108X4
C	102X1	690870	OPEN	108X4
H	OPEN	690870	108X4	108X4
M	690870	OPEN	OPEN	108X4
ME	102X1	690870	OPEN	108X4
S	690870	OPEN	OPEN	108X4
SE	102X1	690870	OPEN	108X4
* AM	102X1	690870	786635	OPEN
* CM	102X1	690870	786635	OPEN
HM	690870	OPEN	OPEN	108X4

\* NOTE: FOR OPTION "8" INLET PORT (METRIC), 788873 REPLACES 786635.

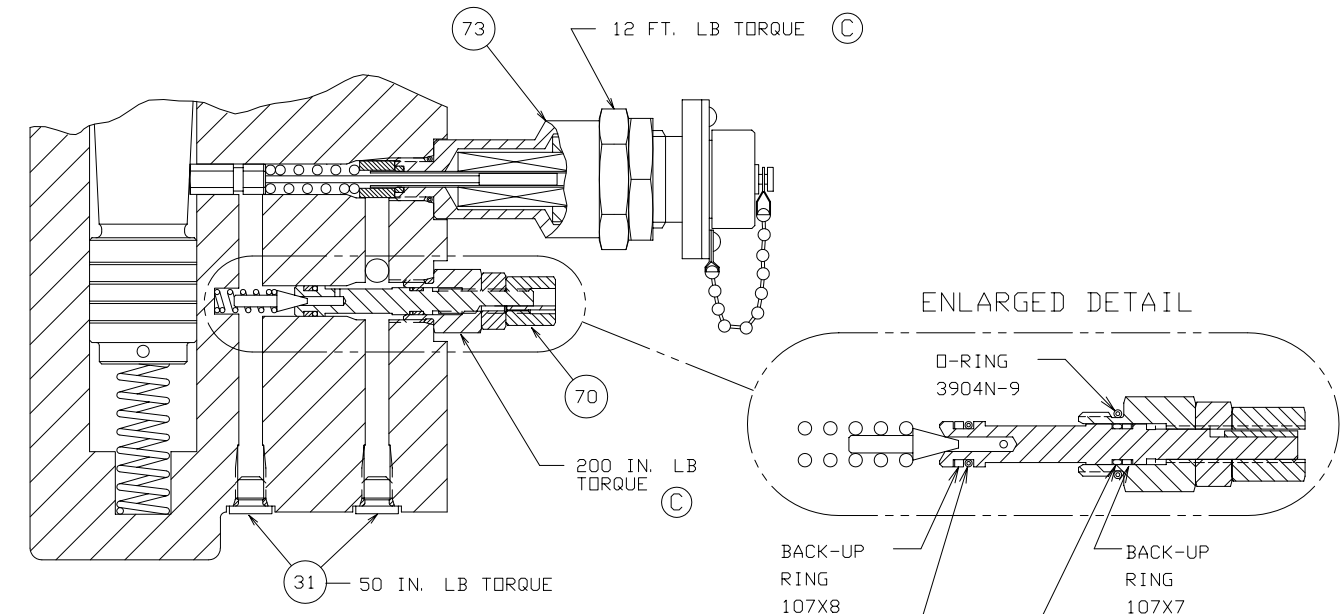


CONTROL OPTION OMIT, A, M, ME & AM  
SECTION Y-Y

CONTROL OPTION C, H, CM & HM  
SECTION Y-Y



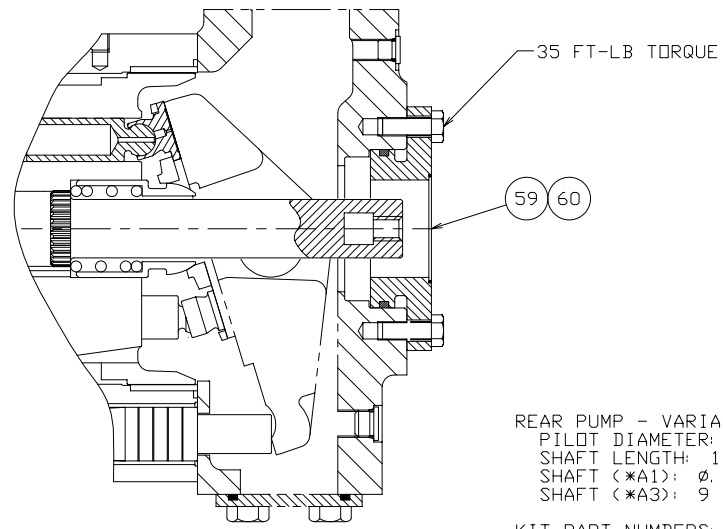
ADAPTER FITTING FOR  
INLET PORT OPTION '8'



CONTROL OPTION S & SE  
SECTION Y-Y

ENLARGED DETAIL

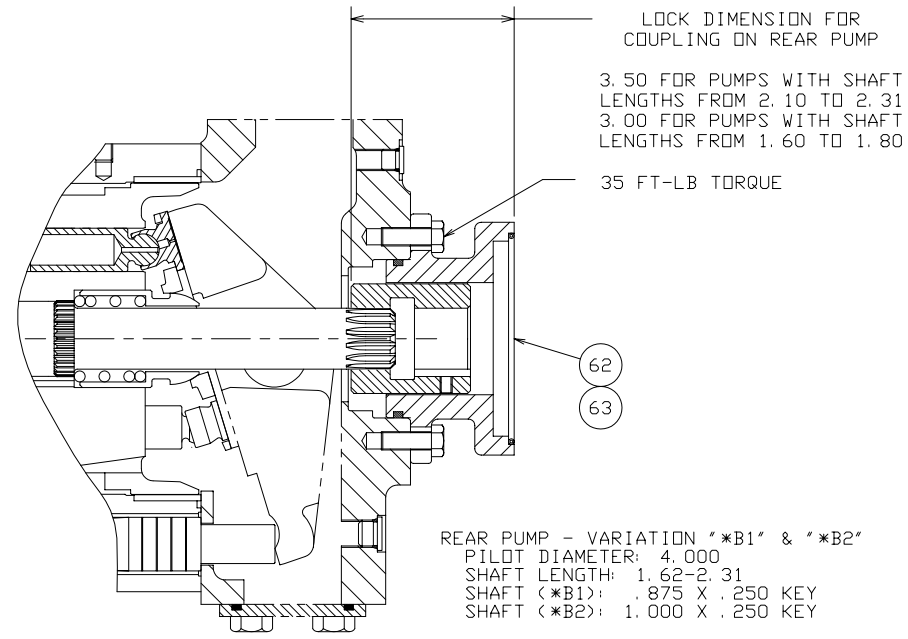
REV	ECN NO	REVISION	CHG BY	DATE	
-	-	SEE SHEET 1	-	-	
DRAWN BY: L. BASS	DATE: 10/2/89	HYDRAULIC PUMP/MOTOR DIV			
APPROVED:	DATE:				
SCALE:					
HEAT TREAT:		SUPERSEDES:		PART MUST CONFORM TO ENGR. STD'S: ESM 1000 ANST. STD. Y14.9-1994 APPLIES EXCEPT WHIC APPLIES TO POSITIONAL TOLERANCES WHEN NO MODIFIER IS SPECIFIED.	
FINISH:		SUPERSEDED BY:		ALL DIMENSIONS ARE IN INCHES. TOLERANCE ON DECIMAL DIMENSIONS IS AS FOLLOWS, UNLESS OTHERWISE SPECIFIED:	
		MATERIAL:		1 PLACE (.01) ± .060 2 PLACE (.00) ± .030 3 PLACE (.000) ± .010 ANGLES ± 2°	
TITLE:		SHEET NO.		SIZE	DRAWING NO.
SERVICE PARTS - PAVC100/22		5 OF 6		D	788270
		REV.	STATUS		
		D	PR		



REAR PUMP - VARIATION "\*A1\*" & "\*A3\*"  
 PILOT DIAMETER: 2.000  
 SHAFT LENGTH: 1.00-1.50  
 SHAFT (\*A1\*): Ø.500 X .125 KEY  
 SHAFT (\*A3\*): 9 TOOTH 20/40 PITCH

KIT PART NUMBERS:

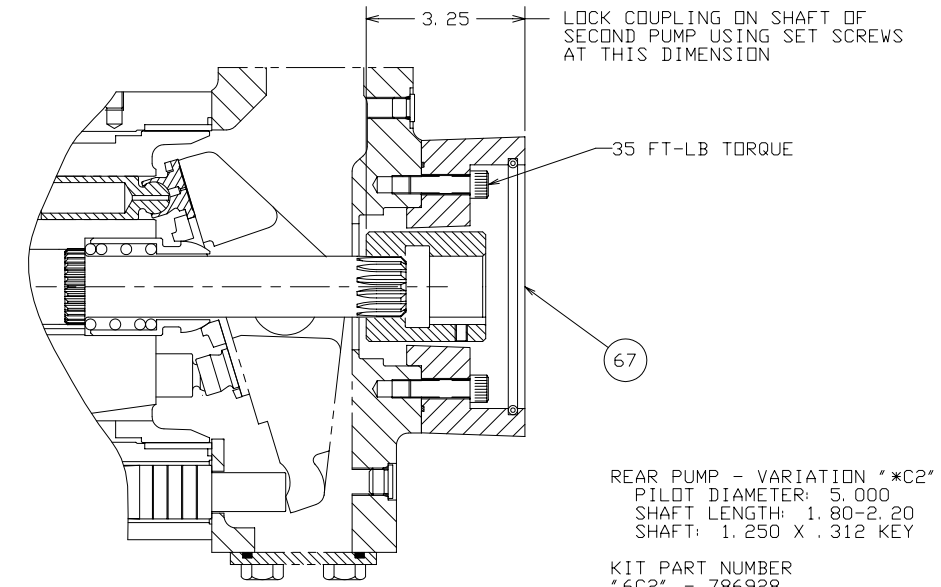
- \*6A1\* - 787851
- \*6A3\* - 786925
- \*9A1\* - 788628
- \*9A3\* - 788629



REAR PUMP - VARIATION "\*B1\*" & "\*B2\*"  
 PILOT DIAMETER: 4.000  
 SHAFT LENGTH: 1.62-2.31  
 SHAFT (\*B1\*): .875 X .250 KEY  
 SHAFT (\*B2\*): 1.000 X .250 KEY

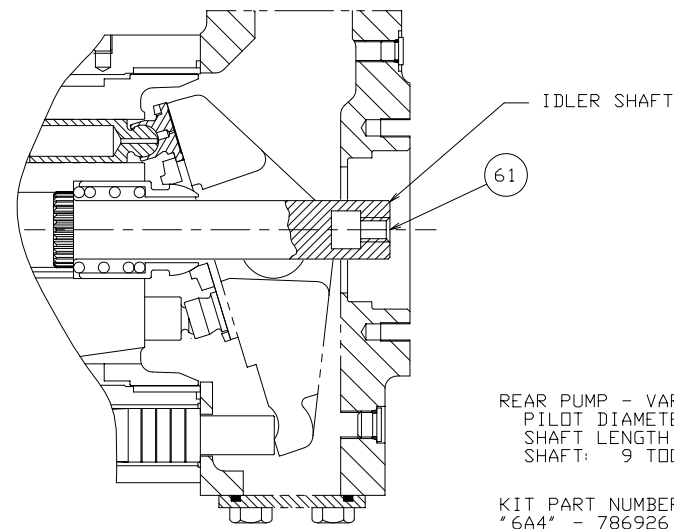
KIT PART NUMBERS:

- \*6B1\* - 786927
- \*6B2\* - 786932
- \*9B1\* - 788630
- \*9B2\* - 788631



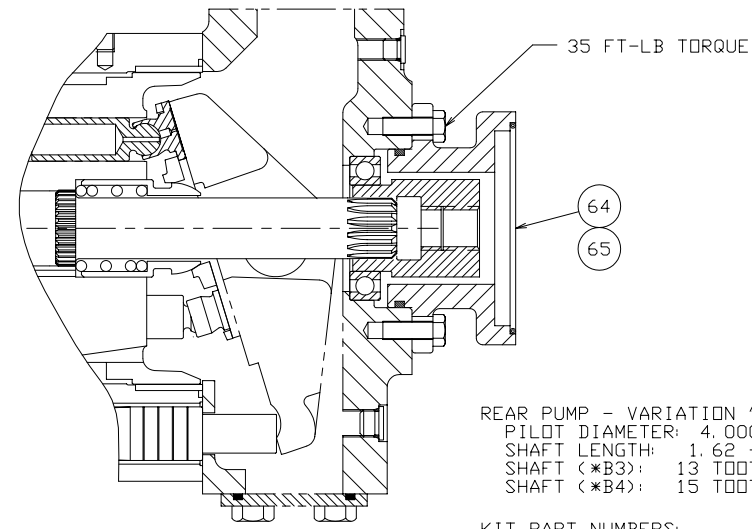
REAR PUMP - VARIATION "\*C2\*"  
 PILOT DIAMETER: 5.000  
 SHAFT LENGTH: 1.80-2.20  
 SHAFT: 1.250 X .312 KEY

KIT PART NUMBER  
 \*6C2\* - 786928  
 \*9C2\* - 788635



REAR PUMP - VARIATION "\*A4\*"  
 PILOT DIAMETER: 3.250  
 SHAFT LENGTH: 1.25 - 1.40  
 SHAFT: 9 TOOTH 16/32 PITCH

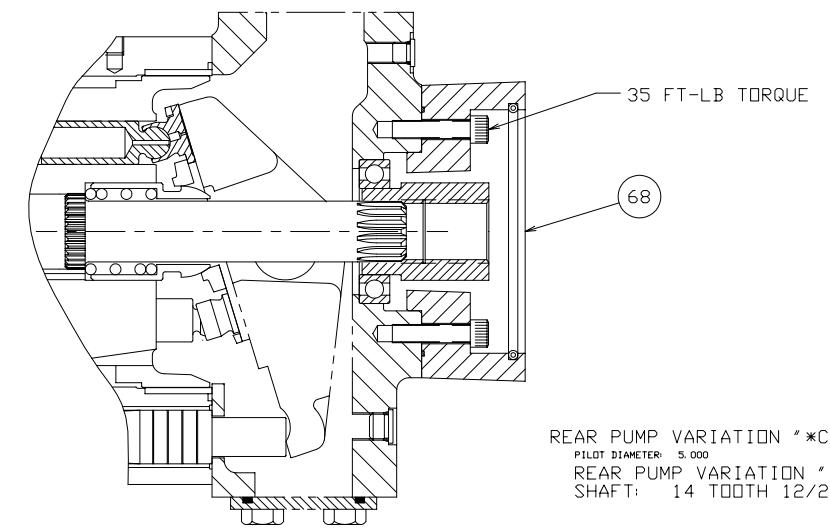
KIT PART NUMBER  
 \*6A4\* - 786926  
 \*9A4\* - 788630



REAR PUMP - VARIATION "\*B3\*" & "\*B4\*"  
 PILOT DIAMETER: 4.000  
 SHAFT LENGTH: 1.62 - 2.31  
 SHAFT (\*B3\*): 13 TOOTH 16/32 PITCH  
 SHAFT (\*B4\*): 15 TOOTH 16/32 PITCH

KIT PART NUMBERS:

- \*6B3\* - 787076
- \*6B4\* - 787077
- \*9B3\* - 788633
- \*9B4\* - 788634



REAR PUMP VARIATION "\*C3\*"  
 PILOT DIAMETER: 5.000  
 REAR PUMP VARIATION "\*C3\*"  
 SHAFT: 14 TOOTH 12/24 PITCH

KIT PART NUMBER  
 \*6C3\* - 787078  
 \*9C3\* - 788636

NOTE:

1. IDLER SHAFT INSTALLED THROUGH FRONT OF PUMP.  
 (REMOVE INPUT SHAFT, INSTALL IDLER, RE-INSTALL INPUT SHAFT.)

-		SEE SHEET 1		-	
REV	ECN NO	REVISION	CHG BY	DATE	
DRAWN BY: L. BASS	DATE: 10/2/89				
APPROVED:	DATE:				
SCALE:					

HYDRAULIC PUMP/MOTOR DIV

HEAT TREAT:	SUPERSEDES:	PART MUST CONFORM TO ENGR. STD'S: ESM 1000 ANSI STD. Y14.5-1994 APPLIES EXCEPT MMC APPLIES TO POSITIONAL TOLERANCES WHEN NO MODIFIER IS SPECIFIED.	TITLE:	SERVICE PARTS - PAVC100/22		
	SUPERSEDED BY:	ALL DIMENSIONS ARE IN INCHES. TOLERANCE ON DECIMAL DIMENSIONS IS AS FOLLOWS, UNLESS OTHERWISE SPECIFIED:	SHEET NO.	SIZE	DRAWING NO.	REV.
FINISH:	MATERIAL:	1 PLACE (.01) ± .060 2 PLACE (.001) ± .030 3 PLACE (.0002) ± .010	6 OF 6	D	788270	D PR
		ANGLES ± 2°				