



PM 3040-25

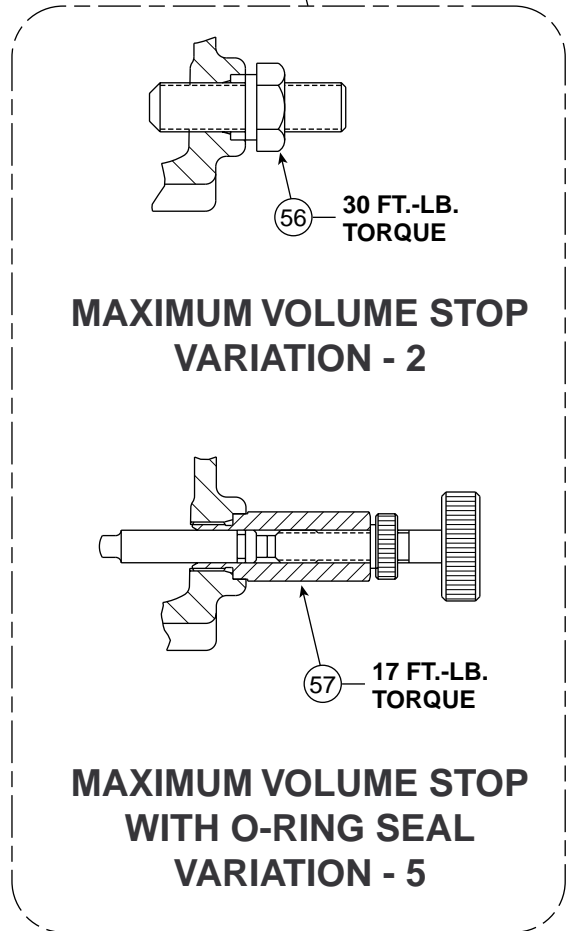
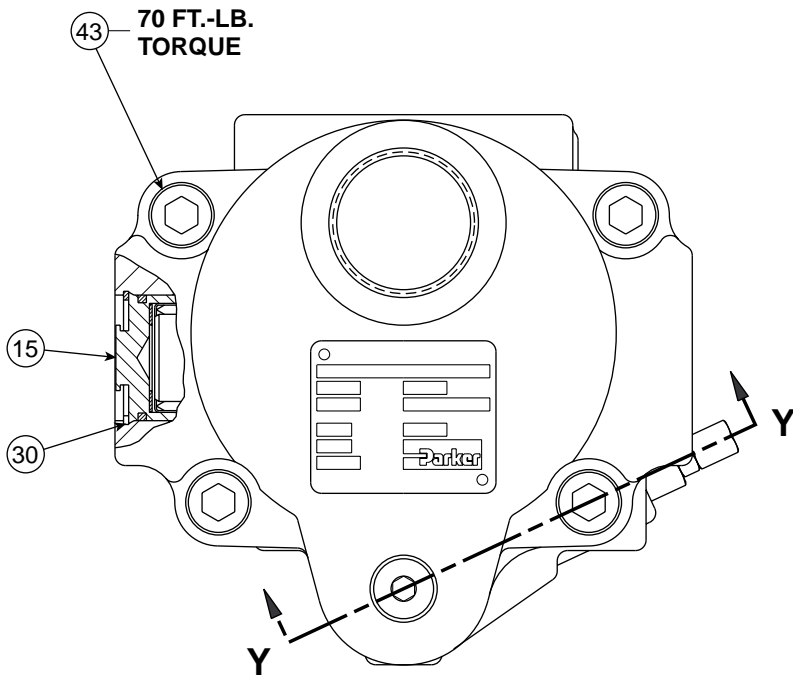
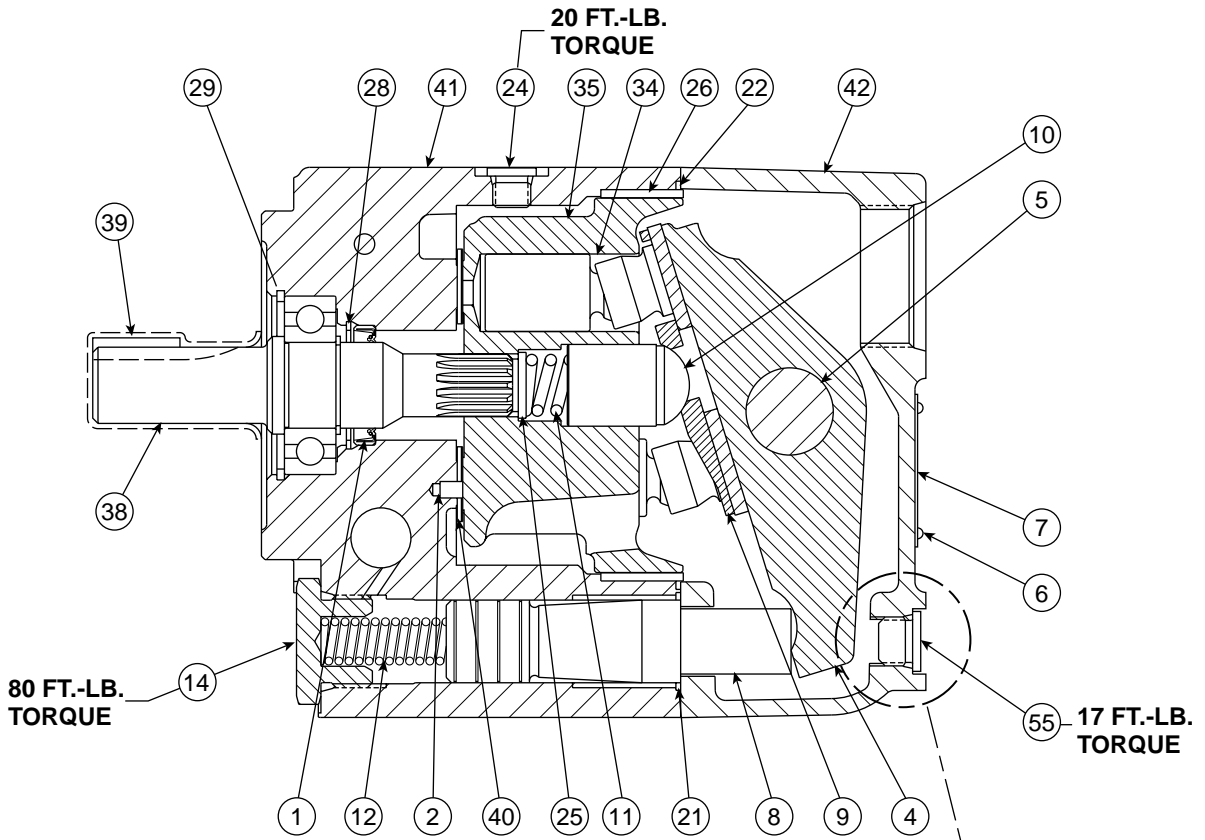
Service Parts Guide

Effective: February, 1997

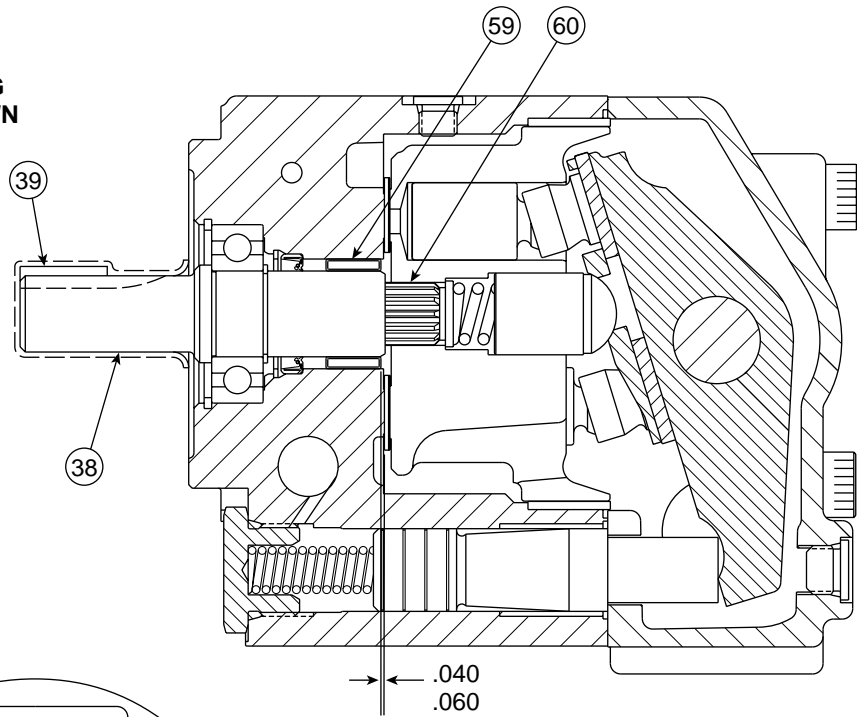
PAVC SERIES VARIABLE VOLUME PISTON PUMP

Model PAVC33 * * * * 25

PAVC38 * * * * 15

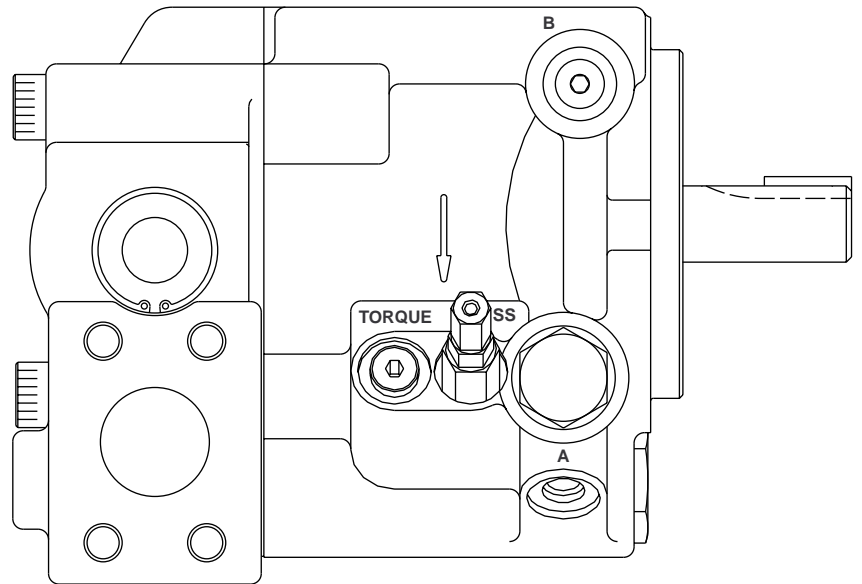
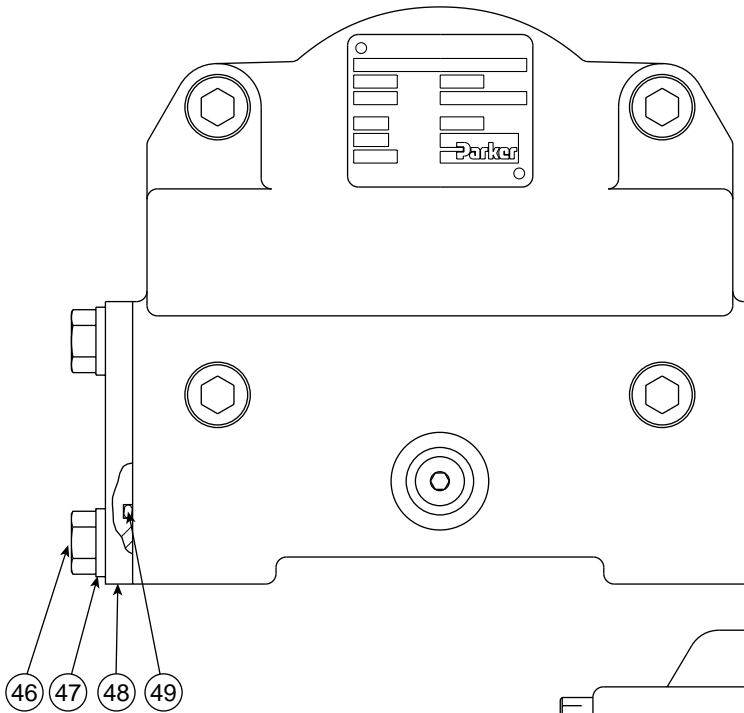


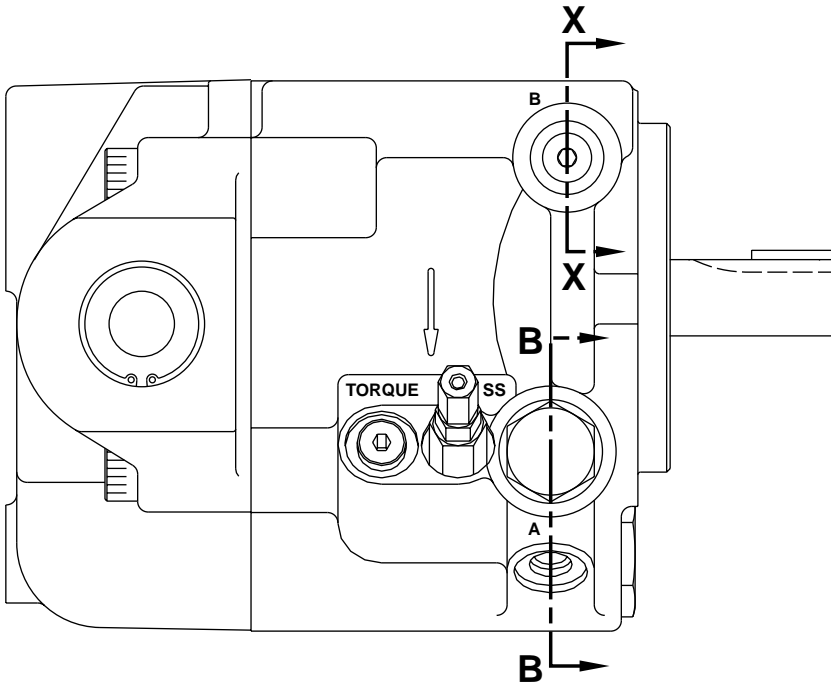
**DUAL SHAFT BEARING
CONFIGURATION SHOWN
(OPTION 9)**



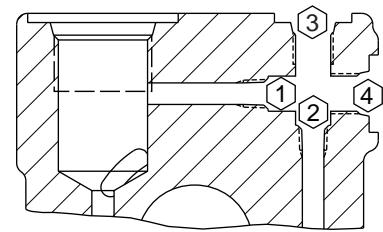
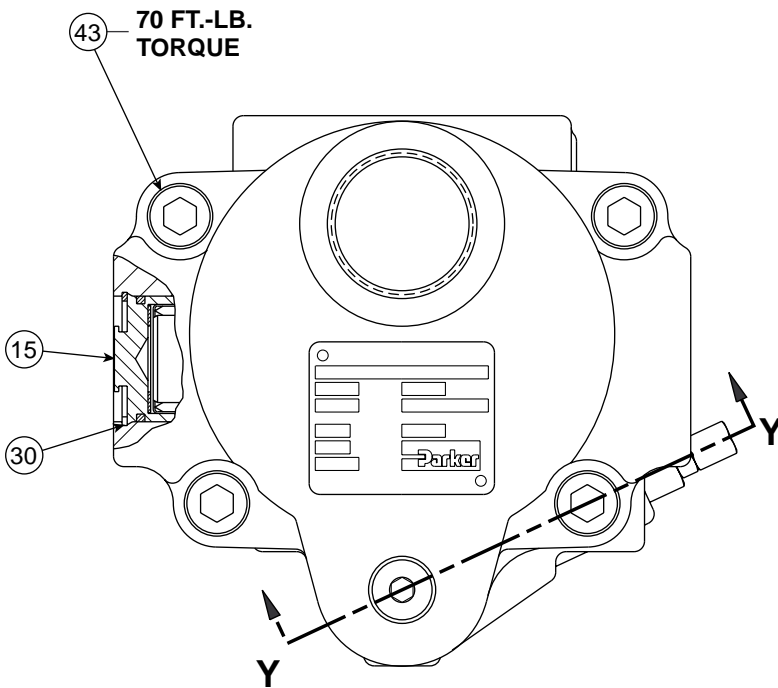
INSTALLED DEPTH OF NEEDLE BEARING, ITEM #59 BELOW PORT PLATE FACE OF HOUSING

**SIDE PORTED
(OPTION 2) PUMP SHOWN**

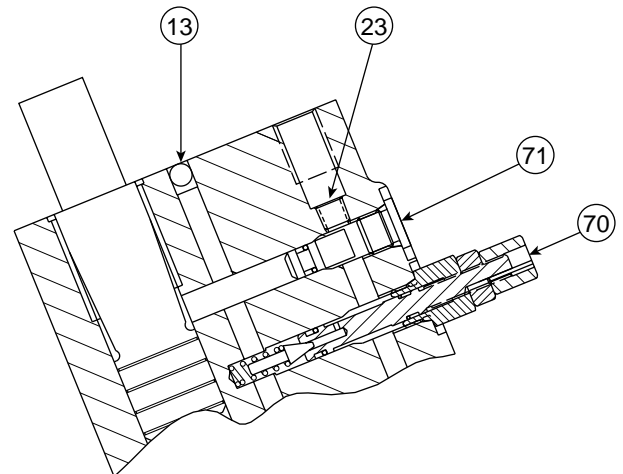




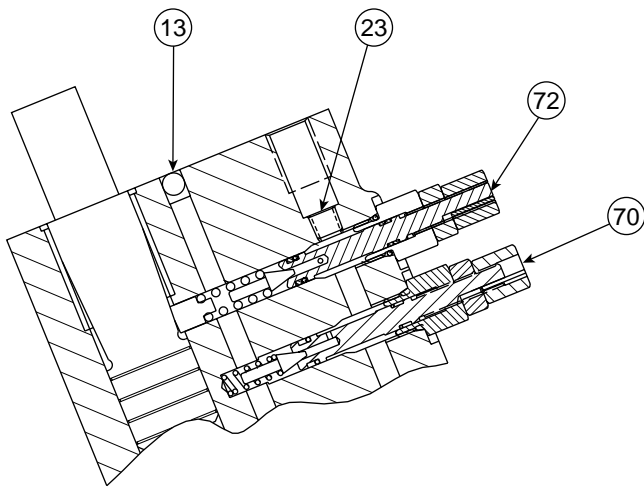
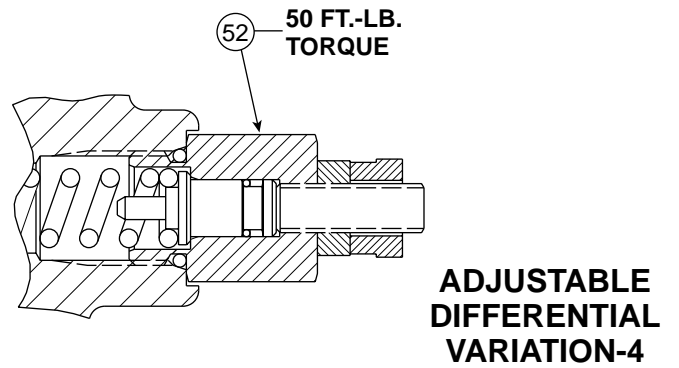
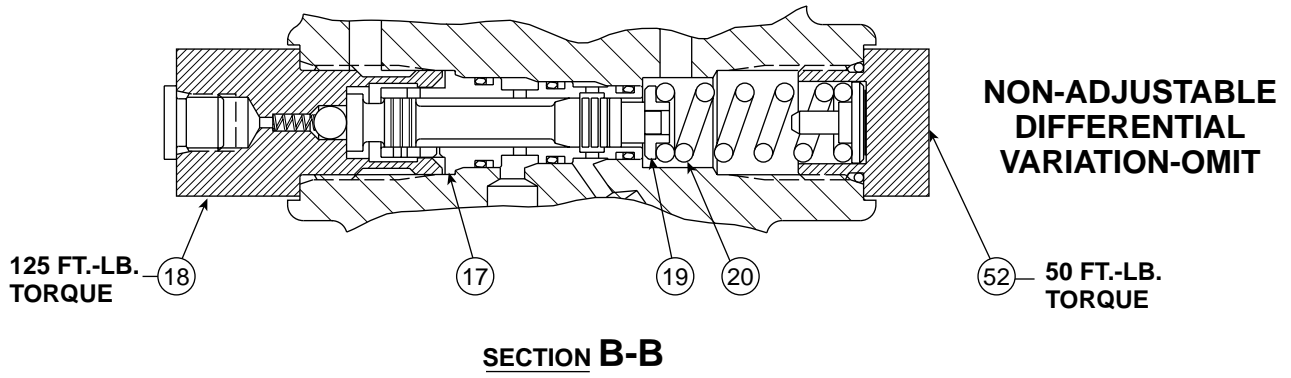
POSITION				
CONTROL OPTION	1	2	3	4
OMIT	OPEN	800599	108X4	108X4
A	102X1	800599	OPEN	108X4
C	102X1	800599	OPEN	108X4
H	OPEN	800599	108X4	108X4
M	800599	OPEN	OPEN	108X4
ME	102X1	800599	OPEN	108X4
S	800599	OPEN	OPEN	108X4
SE	102X1	800599	OPEN	108X4
AM	102X1	800599	786635	OPEN
CM	102X1	800599	786635	OPEN
HM	800599	OPEN	OPEN	108X4



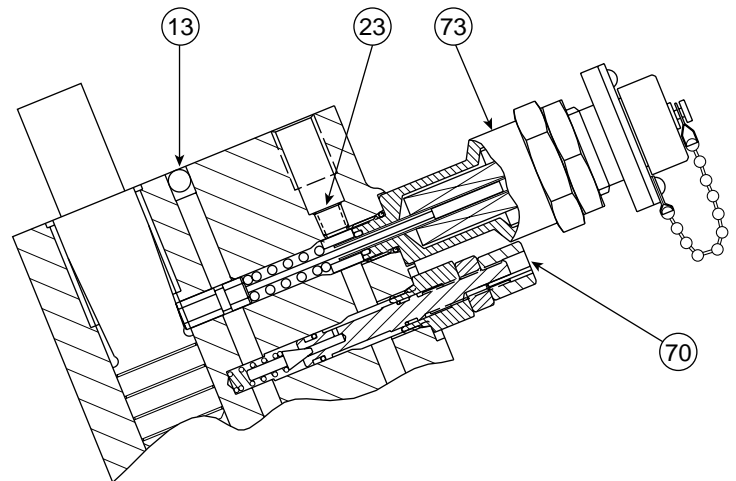
SECTION X-X



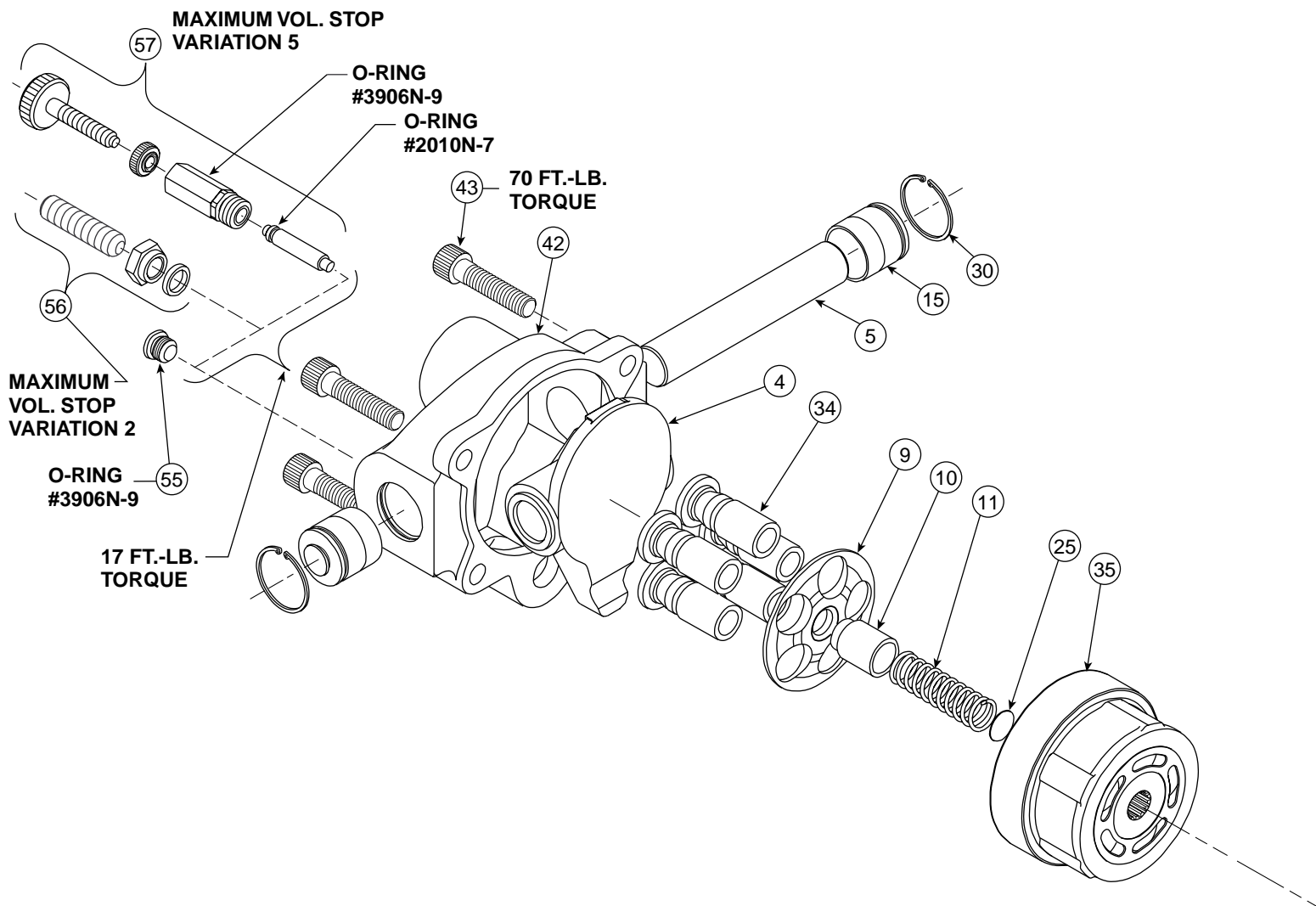
**CONTROL OPTION OMIT
A, M, ME, AM & W
SECTION Y-Y**



**CONTROL OPTION
C, H, CM & HM
SECTION Y-Y**

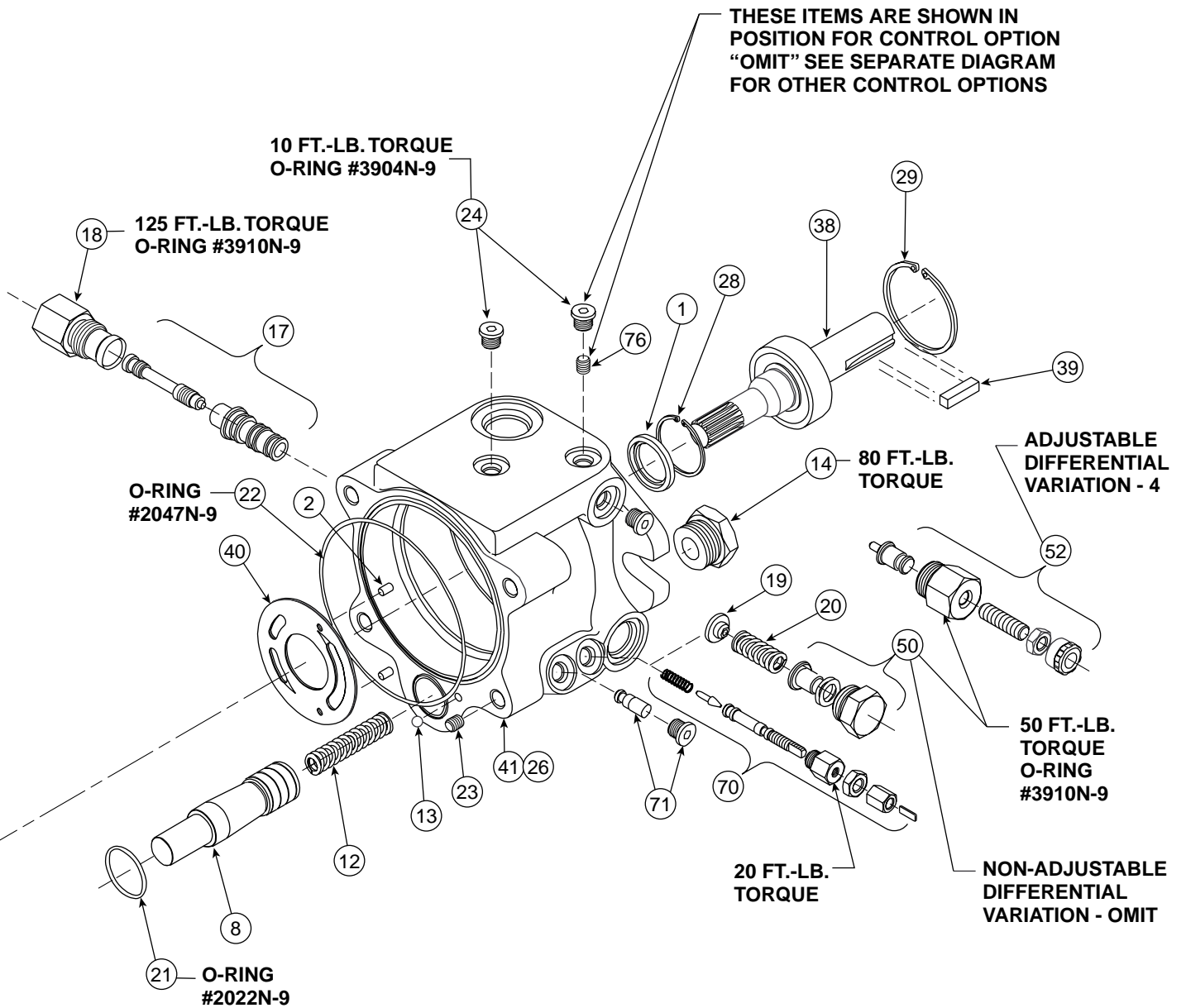


**CONTROL OPTION
S & SE
SECTION Y-Y**



SERVICE NOTES:

- Use a clean lubricant (compatible with the working fluid) on all pump components during assembly.
- Thoroughly clean the reservoir, suction lines, suction strainer, drain lines, etc., before re-installing the pump. Most premature pump failures occur when contaminants from a previous failure have not been completely removed from the system, or cause for previous failure is still present (i.e. water in oil, bypassing filter, etc.).
- Always fill the case with clean fluid before starting a new or serviced pump (fill as high as inlet port will allow on a PAVC style pump). For flooded suction, purge air from suction lines by cracking the inlet fitting or vent plug on pump body. This should prevent an airlock condition and allow for faster priming.
- Check for proper shaft rotation, if there is a possibility it may have changed during a system rebuild.
- Start pump with an open circuit whenever possible. Reduce the compensator to its minimum setting during start-up. Cycle the pump ON and OFF stroke while increasing the compensator to its required setting. This will assist in break-in of new components and help purge air from the case.



NOTE: Pump shown is a left hand (CCW) rotation. For a right hand (CW) rotation pump, the port plate kidneys and outlet port orientation will be reversed.

PAVC

ITEM	PART NUMBER	QTY	DESCRIPTION
1	745761	1	SHAFT SEAL
2	785396	2	PIN - PORT PLATE
3			
4	786174	1	SWASH PLATE
5	766094	1	TRUNNION PIN
6	39X10	2	DRIVE SCREW
7	800511	1	NAME PLATE
8	786170	1	SERVO PISTON
9	786886	1	SLIPPER RETAINER
10	785767	1	BALL SEAT
11	788205	1	SPRING-BARREL
12	MA786380	1	SPRING-SERVO
13	98X16	1	BALL
14	787060N	1	PLUG-SERVO ASSY
15	787061N	2	TRUNNION CAP ASSY
16			
17	787056N	1	SPOOL & SLEEVE ASSY
18	786946N	1	AIRBLEED ASSY
19	786116	1	RETAINER-SPRING
20	786113	1	SPRING-MOD.
21	2022N-9	1	O-RING
22	2047N-9	1	O-RING
23	102X1	1	PLUG
24	108X4	1	PLUG
25	786280	1	RETAINER
26	786887	1	BARREL BUSHING
27			
28	56X317	1	SNAP RING
29	56X327	1	SNAP RING
30	56X318	2	SNAP RING
31			
32			
33			

P
A
V
C

ITEM	PART NUMBER	QTY	DESCRIPTION	
33	34	787981	5	PISTON ASSEMBLY
	35	785394	1	BARREL
38	34	787982	5	PISTON ASSEMBLY
	35	786310	1	BARREL

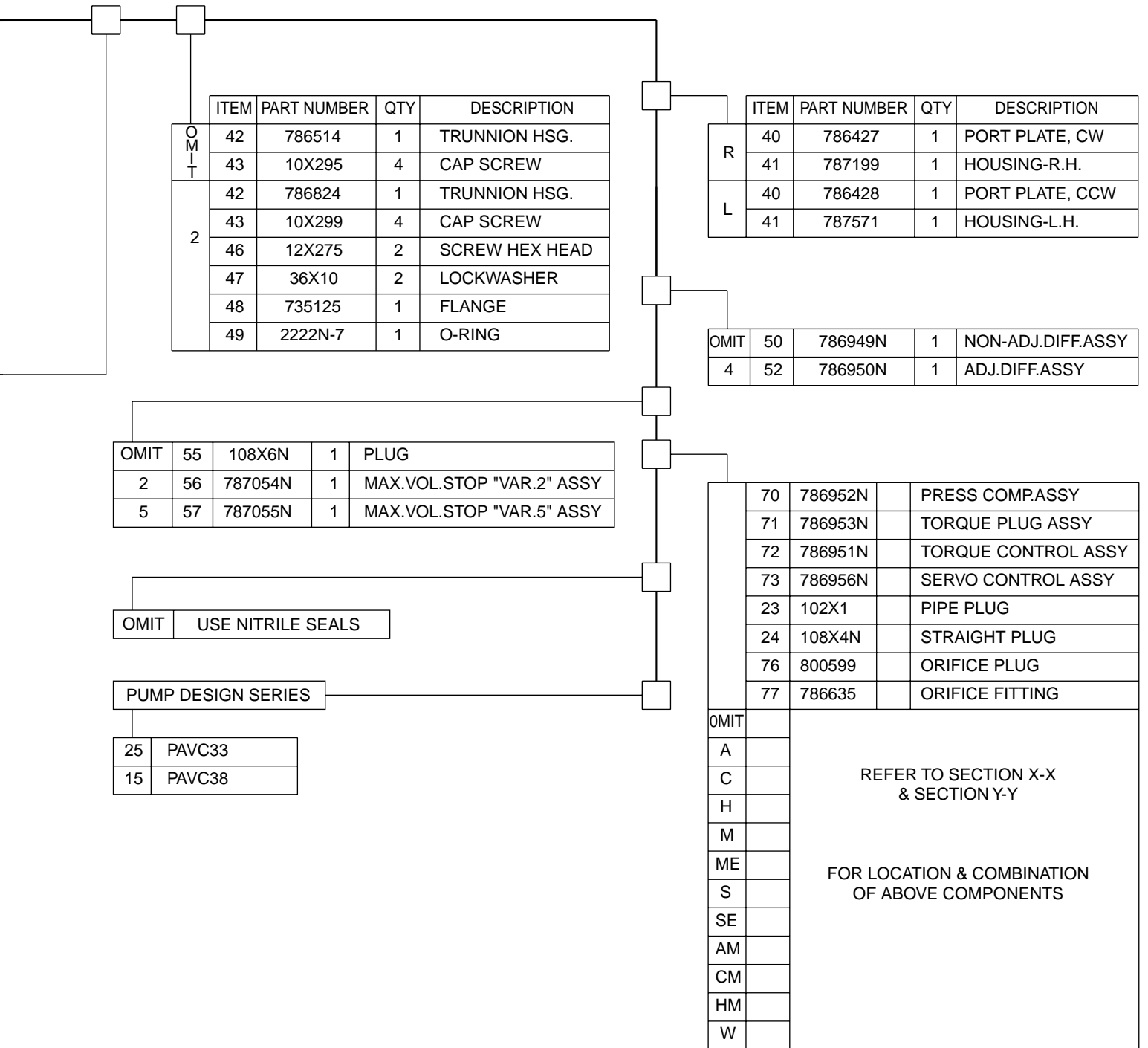
ITEM	PART NUMBER	QTY	DESCRIPTION		
				38	787057
39	22X19	1	KEY-SQUARE		
B	38	787059	1	SHAFT-SPLINE-ASSY	
S	38	787058	1	SHAFT-SHORT-ASSY	
	39	21X12	1	KEY-WOODRUFF	
9	O M I T	38	787601	1	SHAFT-LONG-ASSY
		39	22X19	1	KEY-SQUARE
	B	38	787602	1	SHAFT-SPLINE-ASSY
	S	38	787603	1	SHAFT-SHORT-ASSY
		39	21X12	1	KEY-WOODRUFF
		59	786369	1	NEEDLE BEARING
		60	786373	1	IDLER SHAFT

NOTES:

- SEAL KIT P/N SKPAVC33** FOR PAVC33
SEAL KIT P/N SKPAVC38** FOR PAVC38
(** - DESIGN SERIES)

- ROTATING GROUP KIT RRPVAVC33 ** FOR PAVC33 (** - DESIGN SERIES)
 - R (CW)
 - L (CCW)

- ROTATING GROUP KIT RRPVAVC38 ** FOR PAVC38 (** - DESIGN SERIES)
- R (CW)
 - L (CCW)





Parker Hannifin Corporation
Hydraulic Pump/Motor Division
2745 Snapps Ferry Road
Greeneville, TN 37745 USA
Tel: (423) 639-8151
Fax: (423) 787-2418
Web site: www.parker.com/pumpmotor

PM 3040-25 11/99 IGS Printed in USA

www.comoso.com