

ITEM	PART NUMBER	QTY	DESCRIPTION
OMIT 1	787347	1	SHAFT SEAL

ITEM	PART NUMBER	QTY	DESCRIPTION	
OMIT 55	108X6	1	PLUG	
2	56	786954	1	VOLUME STOP - VARIATION 2
5	57	786955	1	VOLUME STOP - VARIATION 5

ITEM	PART NUMBER	QTY	DESCRIPTION
13			DESIGN SERIES PAVC65

2	99X81	2	ROLL PIN
3	786293	1	BARREL
4	786295	1	SWASH PLATE
5	786305	1	PIN-TRUNNION
6	39X10	2	DRIVE SCREW
7	800511	1	NAME PLATE
8	786301	1	SERVO PISTON
9	786663	1	SLIPPER RETAINER
10	786661	1	BALLSEAT
11	787983	1	SPRING-BARREL
12	787065	2	TRUN. CAP ASSY.
13	787353	1	SPRING-SERVO
14	787064	1	PLUG-SERVO ASS'Y
15	98X16	1	BALL
16	2150-7	1	O-RING
17	787056	1	SPOOL & SLEEVE ASSY
18	786946	1	AIRBLEED ASSY
19	786116	1	RETAINER-SPRING
20	786113	1	SPRING-MOD.
21	2027-9	1	O-RING
22	2050-7	1	O-RING
23	102X1	1	PLUG
25	786393	1	RETAINER
26	786888	1	BARREL-BUSHING
27	56X325	2	SNAP RING
28	56X352	1	SNAP RING
29	56X337	1	SNAP RING
30	10X301	4	CAP SCREW
31	10X293	2	CAP SCREW
32			
33			
34	789515	7	PISTON ASSY

OMIT 50	787071	1	NON-ADJ. DIFF. ASSY	
4	52	787072	1	ADJ. DIFF. ASSY

OMIT			DO NOT PAINT PUMP
P			PAINT PUMP

OMIT			USE NITRILE SEALS
------	--	--	-------------------

R	41	786881	1	PORT PLATE
L	41	786666	1	PORT PLATE

OMIT 2	R	40	787348	1	HOUSING CW - SAE
	L	40	787576	1	HOUSING CCW - SAE
8	R	40	788613	1	HOUSING CW - 6149
	L	40	788614	1	HOUSING CCW - 6149

70	786952		PRESS COMP. ASSY
71	786953		TORQUE PLUG ASSY
72	787075		TORQUE CONTROL ASSY
73	787074		SERVO CONTROL ASSY
74	102X1		PIPE PLUG
75	108X4		STRAIGHT PLUG
76	800599		DRIFICE PLUG
77	786635		DRIFICE FITTING

OMIT	42	786720	1	TRUNNION HOUSING - SAE
	24	108X4	2	PLUG
2	42	786823	1	TRUNNION HOUSING - SAE
	43	108X2	1	PLUG
	24	108X4	2	PLUG
8	42	788615	1	TRUNNION HOUSING - 6149
	43	788516-03	1	PLUG - 6149
	24	788516-04	2	PLUG - 6149
	44	788517	1	ADAPTER FITTING

OMIT			
A			
C			
H			
M			
ME			
S			
SE			
AM			
CM			
HM			

REFER TO SECTION X-X
& SECTION Y-Y
(SHEET 4 OF 5)
FOR LOCATION & COMBINATION
OF ABOVE COMPONENTS

OMIT	65	787598	1	SHFT ASSY-STR-1 PC	
	66	22X31	1	KEY	
	67	801111	1	PROTECTIVE CAP	
B	65	787599	1	SHFT ASSY-SPL-1 PC	
	65	787577	1	SHFT ASSY-STR-2 PC	
9	OMIT	66	22X31	1	KEY
		67	801111	1	PROTECTIVE CAP
	B	65	787514	1	SHFT ASSY-SPL-2 PC
	61	787351	1	NEEDLE BEARING	
	62	787469	1	IDLER SHAFT	

NOTES:

- SEAL KIT P/N SKPAVC65** (** - DESIGN SERIES)
- ROTATING GROUP KIT RRPVAV65** (** - DESIGN SERIES)

R (CW)
L (CCW)

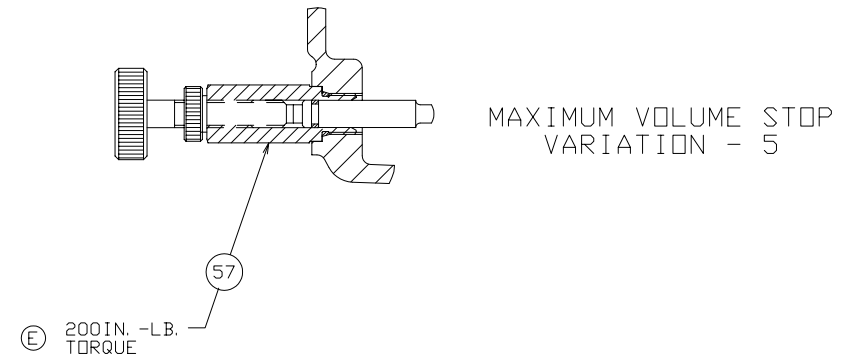
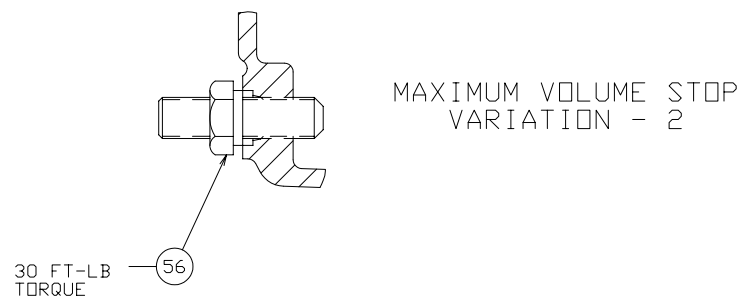
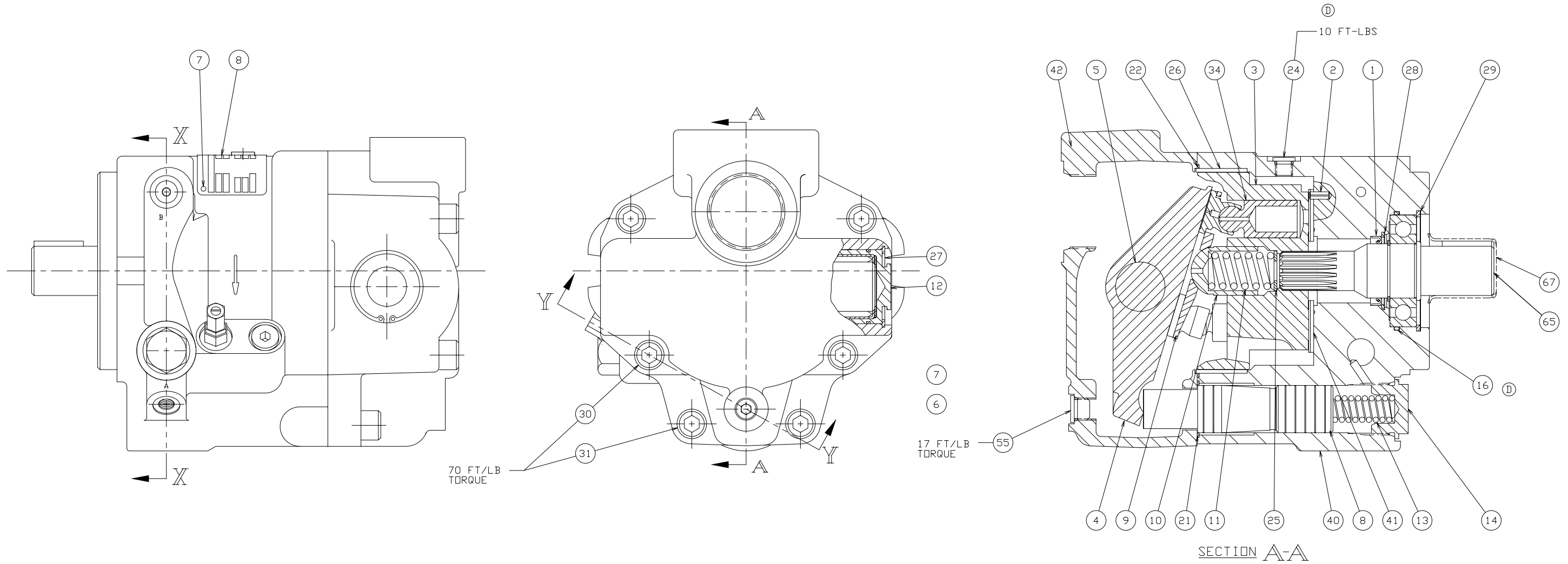
E	133986	SEE ECN	EDB	8/26/03
D	131784	SEE ECN	MDC	6/9/98
C	131173	REMOVE 'W' OPTION	MDC	4/10/97
B	131082	ADD OPTION 'B'	BDL	6/13/96
A	130805	SEE ECN	MDC	6/13/96
-	130329	RELEASE TO PR	LCB	1/19/95

DRAWN BY:	PKH	DATE:	7/27/90
APPROVED:		DATE:	
SCALE:			

HYDRAULIC PUMP/MOTOR DIV

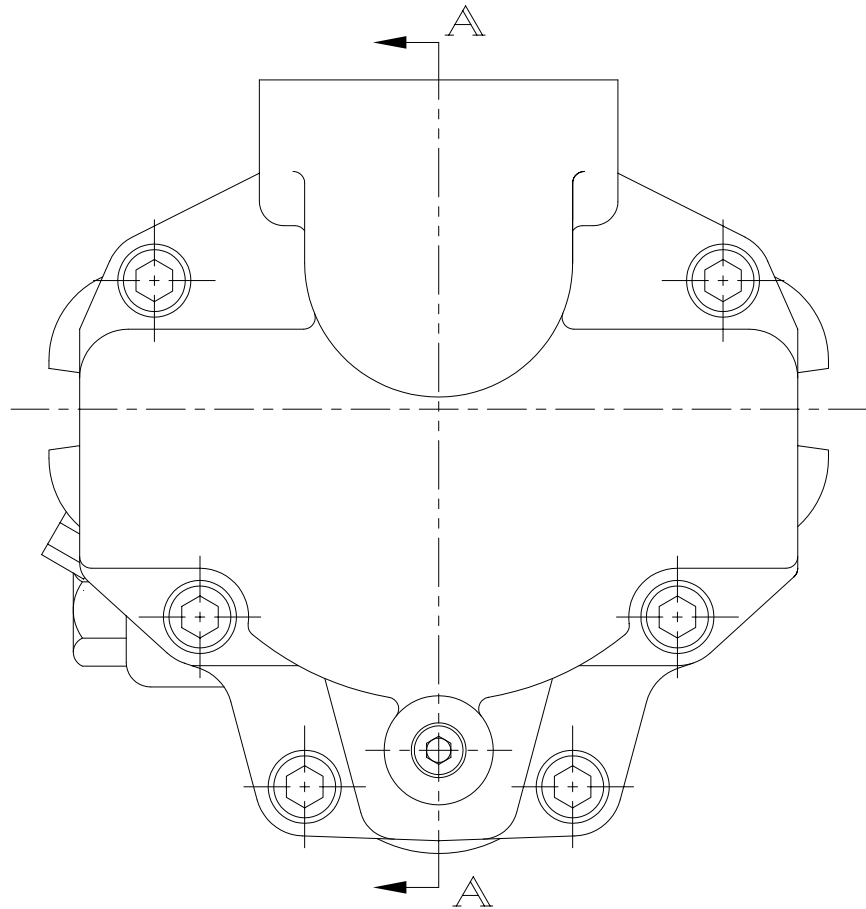
HEAT TREAT:	-	SUPERSEDES:	-	PART MUST CONFORM TO ENGR. STP'S ESM 1000
FINISH:	-	SUPERSEDED BY:	-	ANST. STD. Y14.5-1994 APPLIES EXCEPT W/C APPLIES TO POSITIONAL TOLERANCES WHEN NO MODIFIER IS SPECIFIED.
		MATERIAL:	-	ALL DIMENSIONS ARE IN INCHES. TOLERANCE ON DECIMAL DIMENSIONS IS AS FOLLOWS, UNLESS OTHERWISE SPECIFIED:
				1 PLACE (.00) ± .060
				2 PLACE (.00) ± .030
				3 PLACE (.000) ± .010
				ANGLES ± 2°

TITLE:	SERVICE PARTS - PAVC65/13			
SHEET NO.	1 OF 5	SIZE	D	DRAWING NO.
REV.	E	DATE	8/26/03	STATUS
				PR

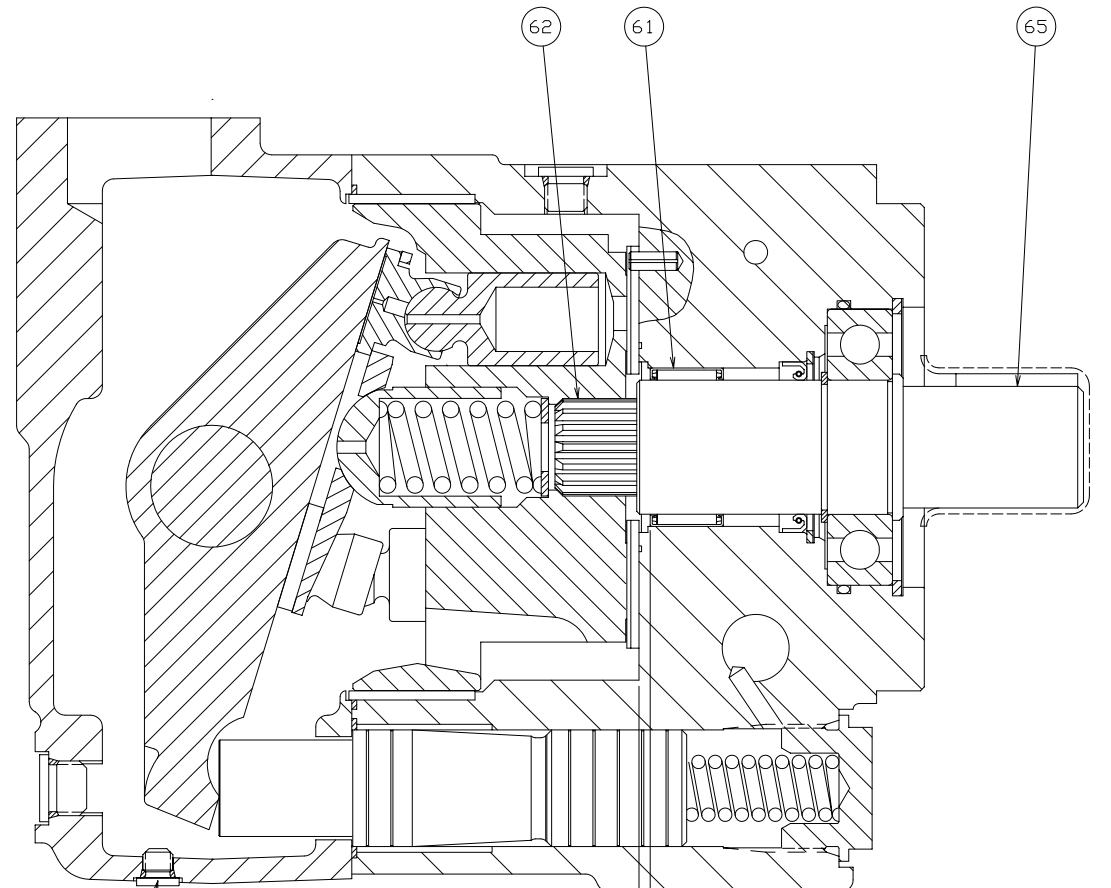


REV	ECN NO	REVISION	CHG BY	DATE
-	-	SEE SHEET 1	-	-
DRAWN BY:	DATE:	TITLE:		
L. BASS	3/23/90	SERVICE PARTS - PAVC65/13		
APPROVED:	DATE:	SHEET NO. 2 OF 5		
-	-	SIZE D	DRAWING NO. 788268	REV. E
SCALE:		STATUS PR		

HEAT TREAT:	SUPERSEDES:	PART MUST CONFORM TO ENGR. STD'S: ESM 1000
-	-	ANSI STD. Y14.5-1994 APPLIES EXCEPT
	SUPERSEDED BY:	MVC APPLIES TO POSITIONAL TOLERANCES
	-	WHEN NO MODIFIER IS SPECIFIED.
FINISH:	MATERIAL:	ALL DIMENSIONS ARE IN INCHES.
-	-	TOLERANCE ON DECIMAL DIMENSIONS IS AS
		FOLLOWS, UNLESS OTHERWISE SPECIFIED:
		1 PLACE (.01) ± .010
		2 PLACE (.00) ± .003
		3 PLACE (.000) ± .010
		ANGLES ± 2°

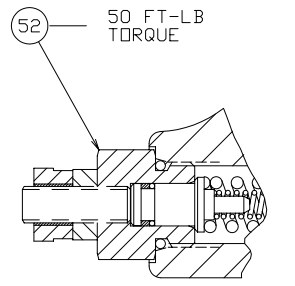
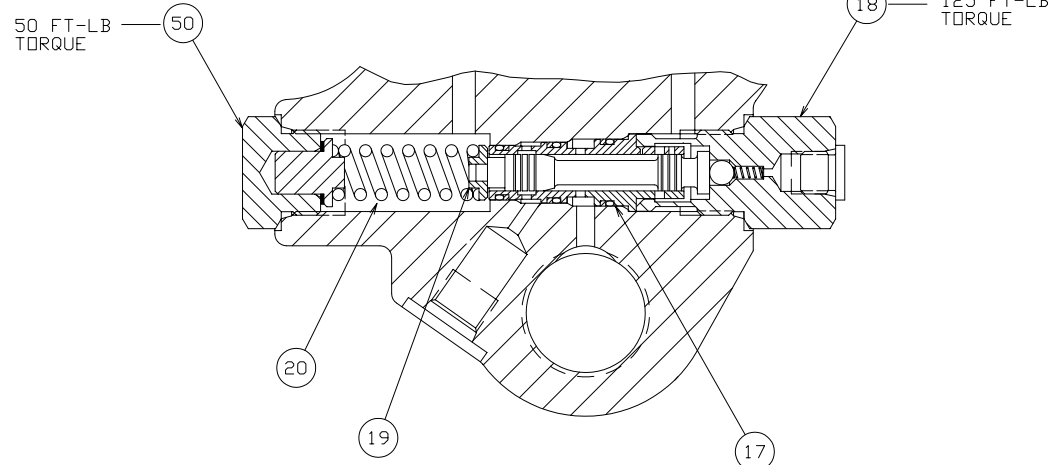


SECTION A-A
DUAL SHAFT BEARING
CONFIGURATION SHOWN (OPTION 9)

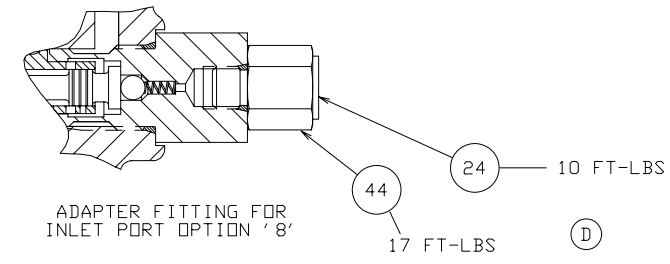


.070 INSTALLED DEPTH OF NEEDLE BEARING, ITEM #61 BELOW PORT PLATE FACE OF HOUSING

VARIATION "OMIT" NON-ADJ. DIFF.



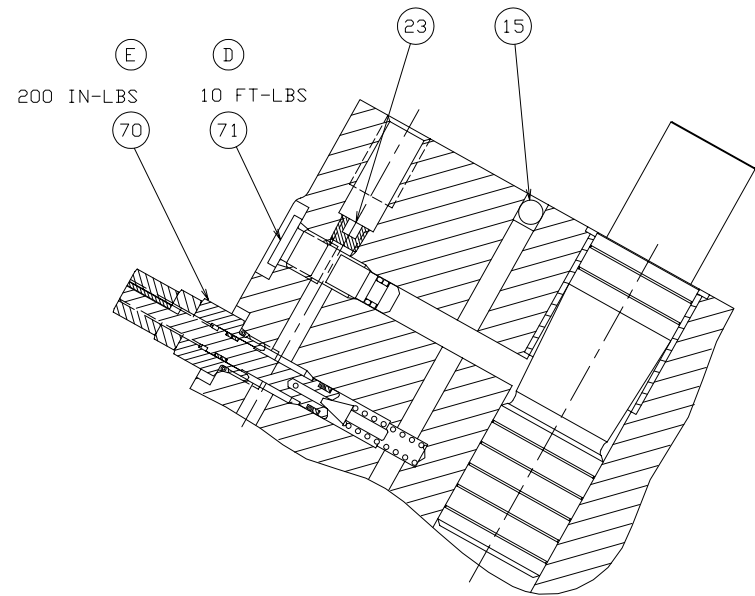
VARIATION "4" ADJUSTABLE DIFFERENTIAL



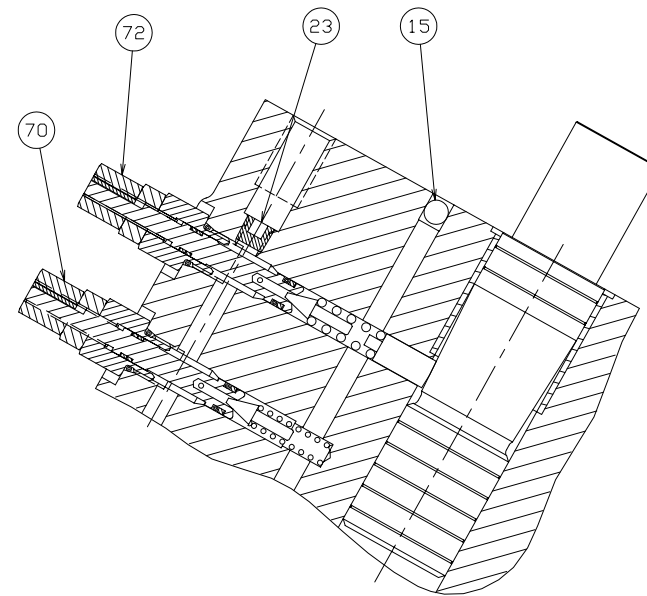
ADAPTER FITTING FOR INLET PORT OPTION "8"

SECTION X-X

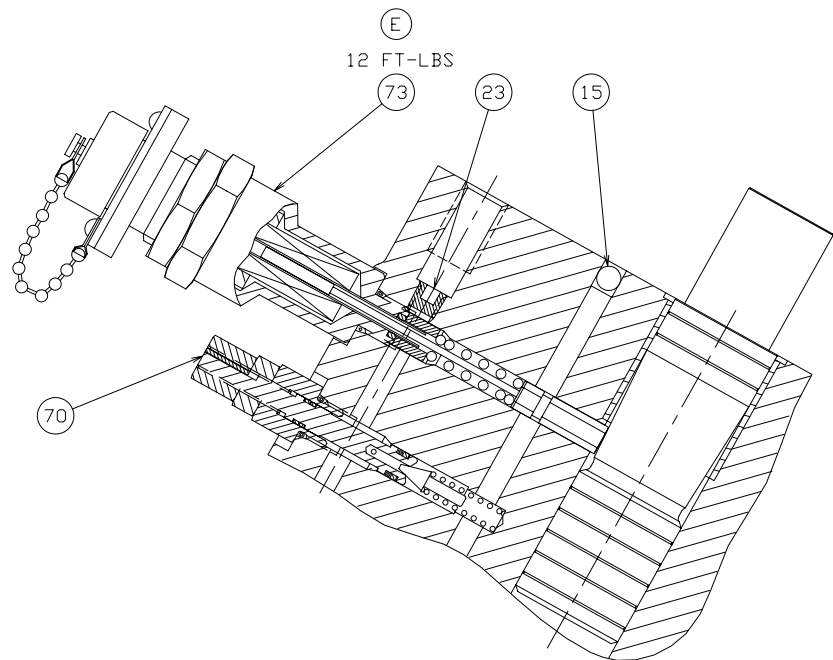
REV	ECN NO	REVISION	CHG BY	DATE
-	-	SEE SHEET 1	-	-
DRAWN BY:	DATE:	TITLE:		
L. BASS	3/23/90	SERVICE PARTS - PAVC65/13		
APPROVED:	DATE:	SHEET NO:		
-	-	3 OF 5		
SCALE:		SIZE:	DRAWING NO:	REV.
-		D	788268	E
HEAT TREAT:		MATERIAL:		STATUS:
-		-		PR



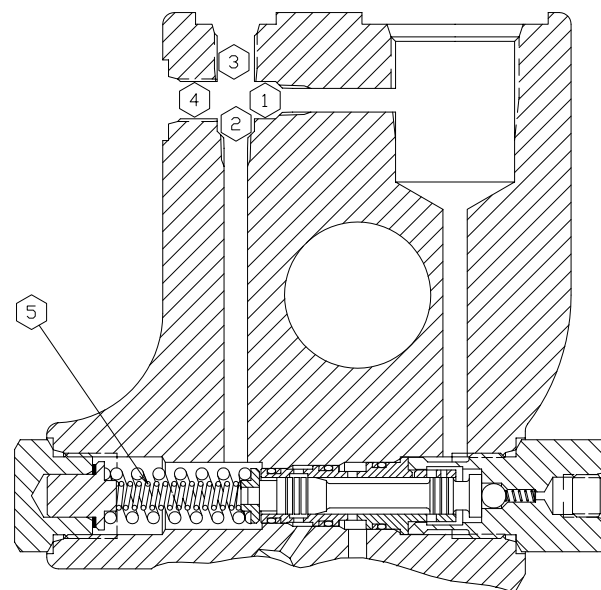
SECTION Y-Y
CONTROL OPTION OMIT, A, M, ME & AM



SECTION Y-Y
CONTROL OPTION C, H, CM & HM



SECTION Y-Y
CONTROL OPTION S & SE



SECTION X-X

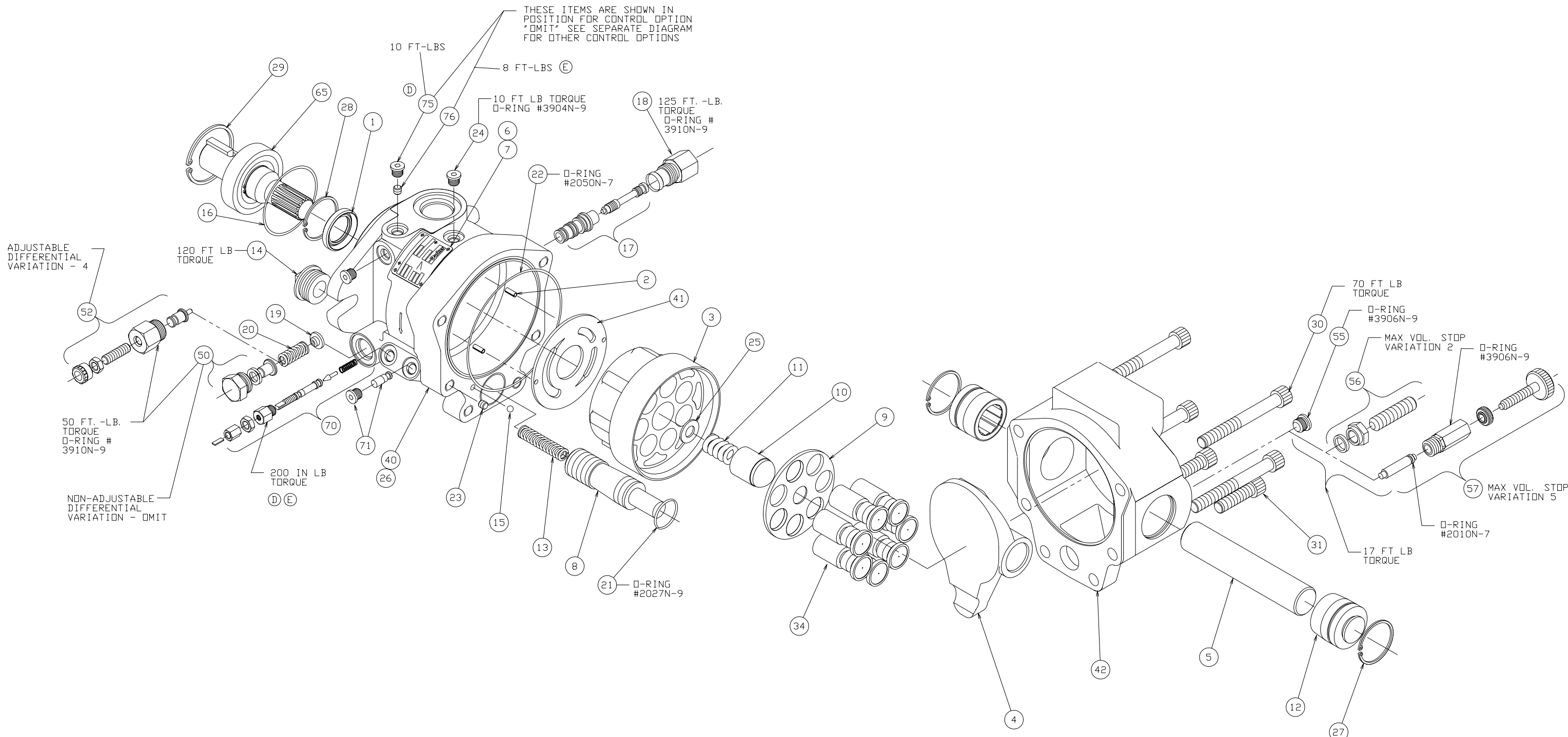
CONTROL OPTION	POSITION				
	1	2	3	4	5
OMIT	OPEN	800599	108X4	108X4	OMIT
A	102X1	800599	OPEN	108X4	MA787474
C	102X1	800599	OPEN	108X4	MA787474
H	OPEN	800599	108X4	108X4	OMIT
M	800599	OPEN	OPEN	108X4	OMIT
ME	102X1	800599	OPEN	108X4	MA787474
S	800599	OPEN	OPEN	108X4	OMIT
SE	102X1	800599	OPEN	108X4	OMIT
AM	102X1	800599	786635	OPEN	MA787474
CM	102X1	800599	786635	OPEN	MA787474
HM	800599	OPEN	OPEN	108X4	OMIT

NOTE: FOR "8" OPTION PUMPS THE 108X4 IN POSITIONS 3 AND 4 WILL BE AN ISO-6149 PLUG P/N 788516-04,

(D)

REV	ECN NO	REVISION	CHG BY	DATE
-	-	SEE SHEET 1	-	-
DRAWN BY: L. BASS	DATE: 3/23/90	HYDRAULIC PUMP/MOTOR DIV		
APPROVED:	DATE:	-		
SCALE:	-			
TITLE: SERVICE PARTS - PAVC65/13				
SHEET NO:	SIZE	DRAWING NO:	REV.	STATUS
4 OF 5	D	788268	E	PR

HEAT TREAT:	SUPERSEDES:	PART MUST CONFORM TO ENGR. STD'S: ESM 1000 ANST. STD. Y14.5-1994 APPLIES EXCEPT WHC APPLIES TO POSITIONAL TOLERANCES WHEN NO MODIFIER IS SPECIFIED.
-	-	-
FINISH:	MATERIAL:	ALL DIMENSIONS ARE IN INCHES. TOLERANCE IN DECIMAL DIMENSIONS IS AS FOLLOWS, UNLESS OTHERWISE SPECIFIED: 1 PLACE (.01) ± .010 2 PLACE (.00) ± .030 3 PLACE (.000) ± .010
-	-	ANGLES ± 2°



ADJUSTABLE DIFFERENTIAL VARIATION - 4

120 FT LB TORQUE

50 FT.-LB. TORQUE O-RING # 3910N-9

NON-ADJUSTABLE DIFFERENTIAL VARIATION - OMIT

THESE ITEMS ARE SHOWN IN POSITION FOR CONTROL OPTION 'OMIT' SEE SEPARATE DIAGRAM FOR OTHER CONTROL OPTIONS

REV	ECN NO	REVISION	CHG BY	DATE	
-	-	SEE SHEET ONE	-	-	
DRAWN BY:	DATE:	TITLE:			
L. BASS	10/26/98	SERVICE PARTS - PAVC65/13			
APPROVED:	DATE:	SHEET NO:			
-	-	5 OF 5			
SCALE:	SIZE:		DRAWING NO:	REV.	
-	D		788268	E	
HEAT TREAT:		SUPERSEDES:		PART MUST CONFORM TO ENGR. STD'S: ESM 1000	
-		-		ANSI STD. Y14.5-1994 APPLIES EXCEPT	
-		-		MVC APPLIES TO POSITIONAL TOLERANCES	
-		-		WHEN NO MODIFIER IS SPECIFIED.	
-		-		ALL DIMENSIONS ARE IN INCHES.	
-		-		TOLERANCE ON DECIMAL DIMENSIONS IS AS	
-		-		FOLLOWS, UNLESS OTHERWISE SPECIFIED:	
-		-		1 PLACE (.00) ± .060	
-		-		2 PLACE (.00) ± .030	
-		-		3 PLACE (.000) ± .010	
-		-		ANGLES ± 2°	