



Pneumatic Division
Richland, Michigan 49083

VAL-SIF-128
Mobile Pneumatic Valve

ISSUED: January, 2004
Supersedes: December, 2001

Mobile Pneumatic 8M Valve

New!

OPERATES:

- Lift Axle
- Dump Gate
- Belly Dump
- Heavy Duty Trucks/Trailers



- High Load Stainless Steel Spring for positive shifting.
- Heavy Duty direct acting manual override.
- Mounting holes inter-changeable with competitors.



The **Mobile Pneumatic Valve** is a 3/8" valve designed to control the raising and lowering of a lift axle by inflating or deflating the air springs. Control can be achieved remotely from the cab of the truck with a 12 VDC signal or manually at the trailer with a heavy duty lever operated override mechanism. Other applications include Dump Gates, Belly Dumps, Trucks and Trailers. Specially developed for harsh environments, the **Mobile Pneumatic Valve** has a corrosion resistant anodized body with stainless steel hardware and **Low Temperature** seals all in a compact body design.



Parker Hannifin Corporation
Pneumatic Division
Richland, MI
Phone: (269) 629-5000
Fax: (269) 629-5385
Web site: www.parker.com/automation/transportation

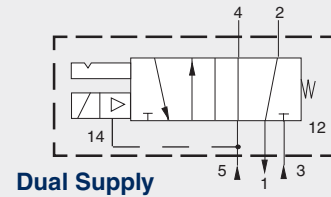
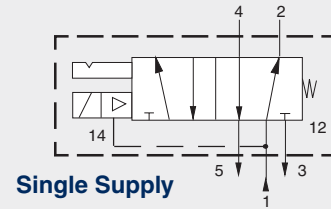
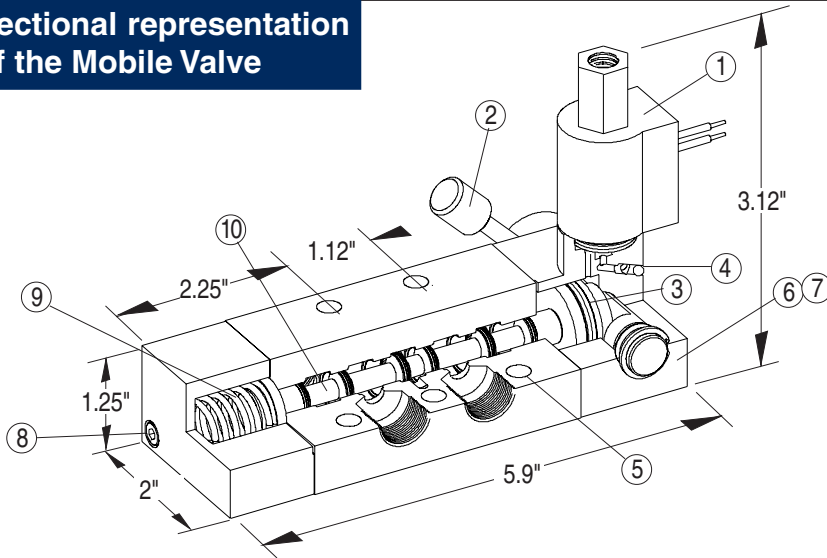


DATA SHEET

Mobile Pneumatic Valve



Sectional representation of the Mobile Valve



Features

- 1 **Proven Industry Standard Solenoid** - Fully Encapsulated coil with wide voltage tolerance and 24" leads.
- 2 **Direct Spool Override** - Low force, detent Cam operated lever override, operates valve with or without supply pressure to main valve.
- 3 **Oversize Pilot Piston** - Provides 80 lbs of shift force @ 100 PSI to ensure valve shifts in most frigid temperatures. 30% more force than competitive units.
- 4 **Dual Pressure Compatible** - Internal tappings allow valve to be converted from single supply to dual feed without need for external tubing.
- 5 **Interchangeable Mounting Pattern** - Allows valve to be retrofitted into applications using competitive products without modifications
- 6 **Machined Aluminum Body** - Provides higher resistance to impact and eliminates porosity problems encountered with die-castings.
- 7 **Anodized Body and End Caps** - Provides high degree of corrosion protection. Anodized spool bore greatly reduces oxidation via exposed exhaust ports.
- 8 **Stainless Steel Fasteners** - Eliminates corroded joints when valve dis-assembled for service.
- 9 **High Load Stainless Steel Reset Spring** - Ensures valves will reset under all temperature conditions.
- 10 **Special Seal Formulation** - Custom polyurethane seal compound eliminates swell from de-icing fluid and allows use in extreme temperature environments.

Specifications:

Model Number: 8M513K4855145A

Description: 5 Port, 4-Way, 2-Position Single Solenoid Pilot operated Pneumatic Directional Control Valve with Detent Direct Spool Override.

Port Size: 3/8"

Operating Pressure: 30 to 150 PSI (2 to 10 Bar)

Operating Temp.: -40° to +160°F (-40° to -70°C)

Service: Compressed Air, Filtered, Lubricated or Unlubricated.

Seal life: 10,000,000 +Operations

Flow: Average Cv 2.5 (60CFM (1700Liters) @90PSI (6 Bar) to Atmosphere.

Coil Voltage: 12 VDC +/-15% (24 VDC Optional)

Coil Wattage: 7.0 (0.58 Amps)

Body/Caps: Machined T6262 Aluminum Bar stock Anodized.

Spool: Machined T2011 Aluminum, Anodized

Pilot Piston: 30% Glass Acetal

Fasteners: Stainless Steel

Return Spring: Stainless Steel

Lubrication: Mobil Temp SCH100 Grease



Parker Hannifin Corporation

Pneumatic Division

Richland, MI

Phone: (269) 629-5000

Fax: (269) 629-5385

Web site: www.parker.com/automation/transportation

