

Wear Ring / Bearing WRT Profile

Catalog EPS 5370/USA



WRT Profile, Tight-Tolerance Rod Wear Ring

WRT tight-tolerance rod wear rings, when combined with the WRT profile, complete the premier cylinder bearing system. Recommended for light- to heavy-duty hydraulic applications, they are available in standard sizes from 7/8" up to 7" rod diameters (larger sizes upon request). WRTs feature chamfered corners on the O.D. and are designed to snap open during assembly to hold tight against the head gland, eliminating rod interference and simplifying installation.

Technical Data

Standard Material

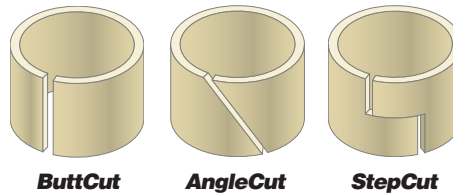
W4733 WearGard™

Radial Tolerance

+0.000"/-0.002" (up to 5-3/4" I.D.); +0.000"/-0.003" (5-3/4" to 7" I.D.)

End Cuts

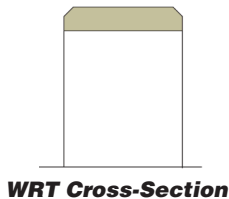
Butt Cut, Angle Cut, Step Cut



ButtCut

AngleCut

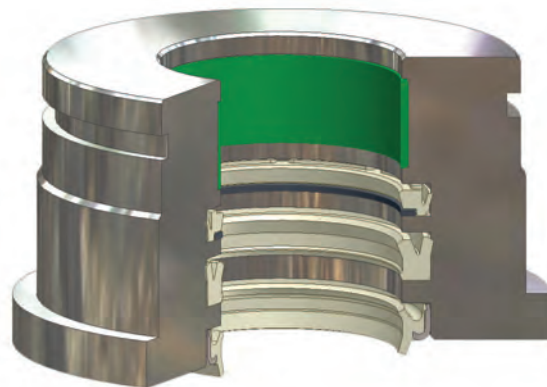
StepCut



WRT Cross-Section

Options

Virtually any width can be produced without assessing a setup charge. Additionally, other cross-sections not shown are available when required.



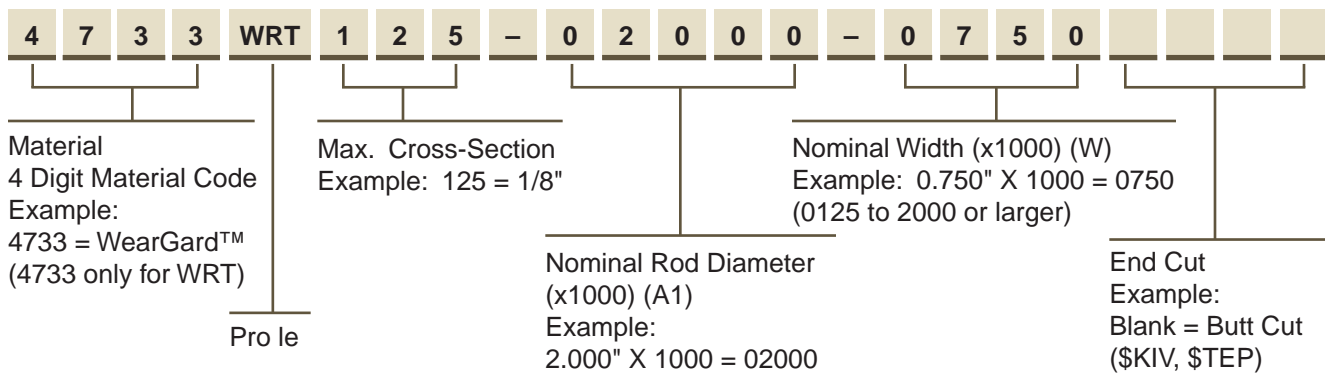
**Rod sealing system comprised of
WRT wearing, BR buffering assembly,
BT u-cup and AH canned wiper**

09/01/07

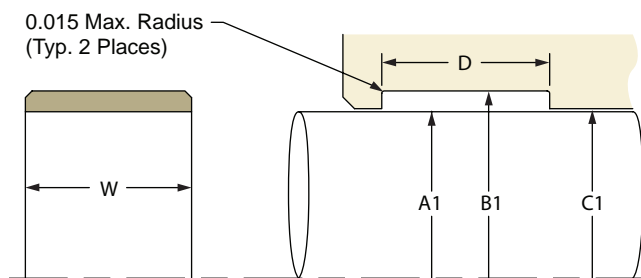
WRT Profile

Part Number Nomenclature — WRT Profile

Table 9-7. WRT Profile



Gland Dimensions — WRT Profile



Please refer to Engineering Section 2, page 2-8 for surface finish and additional hardware considerations.

Table 9-8. WRT Gland Dimensions — Inch

A1 Rod Diameter	B1 Groove Diameter	C1 Throat Diameter	D Groove Width	Part Number
+.000/-0.002	+.002/-0.000	+.002/-0.000	+.010/-0.000	
0.875	1.000	0.892	D = W + 0.010"	4733WRT062-00875-XXXX
1.000	1.125	1.017	D = W + 0.010"	4733WRT062-01000-XXXX
1.125	1.250	1.142	D = W + 0.010"	4733WRT062-01125-XXXX
1.250	1.375	1.267	D = W + 0.010"	4733WRT062-01250-XXXX
1.375	1.500	1.392	D = W + 0.010"	4733WRT062-01375-XXXX
1.500	1.625	1.517	D = W + 0.010"	4733WRT062-01500-XXXX
1.625	1.750	1.642	D = W + 0.010"	4733WRT062-01625-XXXX
1.750	1.875	1.767	D = W + 0.010"	4733WRT062-01750-XXXX
2.250	2.375	2.267	D = W + 0.010"	4733WRT062-02250-XXXX
2.500	2.625	2.517	D = W + 0.010"	4733WRT062-02250-XXXX
+.000/-0.002	+.002/-0.000	+.002/-0.000	+.010/-0.000	
0.750	1.001	0.767	D = W + 0.010"	4733WRT125-00750-XXXX
0.875	1.126	0.892	D = W + 0.010"	4733WRT125-00875-XXXX
1.000	1.251	1.017	D = W + 0.010"	4733WRT125-01000-XXXX
1.125	1.376	1.142	D = W + 0.010"	4733WRT125-01125-XXXX
1.250	1.501	1.267	D = W + 0.010"	4733WRT125-01250-XXXX
1.375	1.626	1.392	D = W + 0.010"	4733WRT125-01375-XXXX
1.500	1.751	1.517	D = W + 0.010"	4733WRT125-01500-XXXX
1.625	1.876	1.642	D = W + 0.010"	4733WRT125-01625-XXXX
1.750	2.001	1.767	D = W + 0.010"	4733WRT125-01750-XXXX
1.875	2.126	1.892	D = W + 0.010"	4733WRT125-01875-XXXX

For custom groove calculations, see Appendix C.

04/01/12

Table 9-8. WRT Gland Dimensions — Inch (Continued)

A1 Rod Diameter	B1 Groove Diameter	C1 Throat Diameter	D Groove Width	Part Number
+ .000/- .002	+ .002/- .000	+ .002/- .000	+ .010/- .000	
2.000	2.251	2.017	D = W + 0.010"	4733WRT125-02000-XXXX
2.125	2.376	2.142	D = W + 0.010"	4733WRT125-02125-XXXX
2.250	2.501	2.267	D = W + 0.010"	4733WRT125-02250-XXXX
2.375	2.626	2.392	D = W + 0.010"	4733WRT125-02375-XXXX
2.500	2.751	2.517	D = W + 0.010"	4733WRT125-02500-XXXX
2.625	2.876	2.642	D = W + 0.010"	4733WRT125-02625-XXXX
2.750	3.001	2.767	D = W + 0.010"	4733WRT125-02750-XXXX
2.875	3.126	2.892	D = W + 0.010"	4733WRT125-02875-XXXX
3.000	3.251	3.017	D = W + 0.010"	4733WRT125-03000-XXXX
3.125	3.376	3.142	D = W + 0.010"	4733WRT125-03125-XXXX
3.250	3.501	3.267	D = W + 0.010"	4733WRT125-03250-XXXX
3.375	3.626	3.392	D = W + 0.010"	4733WRT125-03375-XXXX
3.500	3.751	3.517	D = W + 0.010"	4733WRT125-03500-XXXX
3.625	3.876	3.642	D = W + 0.010"	4733WRT125-03625-XXXX
3.750	4.001	3.767	D = W + 0.010"	4733WRT125-03750-XXXX
3.875	4.126	3.892	D = W + 0.010"	4733WRT125-03875-XXXX
3.937	4.188	3.954	D = W + 0.010"	4733WRT125-03937-XXXX
4.000	4.251	4.017	D = W + 0.010"	4733WRT125-04000-XXXX
4.125	4.376	4.142	D = W + 0.010"	4733WRT125-04125-XXXX
4.250	4.501	4.267	D = W + 0.010"	4733WRT125-04250-XXXX
4.375	4.626	4.392	D = W + 0.010"	4733WRT125-04375-XXXX
4.500	4.751	4.517	D = W + 0.010"	4733WRT125-04500-XXXX
4.625	4.876	4.642	D = W + 0.010"	4733WRT125-04625-XXXX
4.750	5.001	4.767	D = W + 0.010"	4733WRT125-04750-XXXX
4.875	5.126	4.892	D = W + 0.010"	4733WRT125-04875-XXXX
5.000	5.251	5.017	D = W + 0.010"	4733WRT125-05000-XXXX
5.125	5.376	5.142	D = W + 0.010"	4733WRT125-05125-XXXX
5.250	5.501	5.267	D = W + 0.010"	4733WRT125-05250-XXXX
5.375	5.626	5.392	D = W + 0.010"	4733WRT125-05375-XXXX
5.500	5.751	5.517	D = W + 0.010"	4733WRT125-05500-XXXX
5.625	5.876	5.642	D = W + 0.010"	4733WRT125-05625-XXXX
+ .000/- .004	+ .003/- .000	+ .003/- .000	+ .010/- .000	
5.750	6.001	5.770	D = W + 0.010"	4733WRT125-05750-XXXX
6.000	6.251	6.020	D = W + 0.010"	4733WRT125-06000-XXXX
6.250	6.501	6.270	D = W + 0.010"	4733WRT125-06250-XXXX
6.500	6.751	6.520	D = W + 0.010"	4733WRT125-06500-XXXX
6.750	7.001	6.770	D = W + 0.010"	4733WRT125-06750-XXXX
7.000	7.251	7.020	D = W + 0.010"	4733WRT125-07000-XXXX

For custom groove calculations, see Appendix C.

NOTE: For sizes larger than those shown in the table, please contact your local Parker representative.

WRT Groove Calculation

See Rod Wear-Ring Groove Calculation in Appendix C.

09/01/07

