

Wiper K Profile

Catalog EPS 5370/USA



K Profile, Industrial Snap-In Wiper

K wipers offer a unique, light-load contact lip on both the sealing and wiping lips, making these excluders suitable for light duty industrial hydraulic applications. They are most commonly used in conjunction with Parker rod seals to provide a redundant film-breaking lip.

Technical Data

Standard Materials*	Temperature Range	Surface Speed
P4615A90	-65°F to 200°F (-54C to 93°C)	<1.6 ft/s (0.5 m/s)

***Alternate Materials:** For applications that may require an alternate material, please contact your local Parker Seal representative.

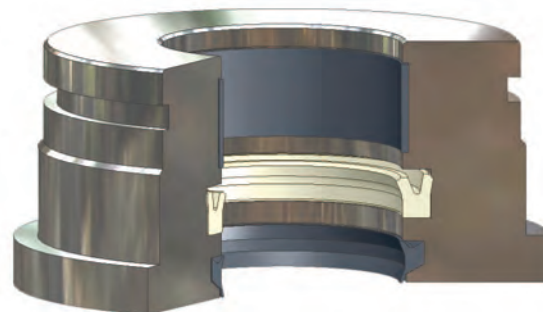
Part Number Nomenclature — K Profile

Table 8-17. K Profile — Inch

4	6	1	5	K	0	0	7	5	0
└──────────┘				└──┘	└──────────┘				
Seal Compound 4-Digit Material Code Example: 4615 = Molythane®				Profile	Nominal Rod Diameter (x1000) Example: 0.750 x 1000 = 00750				



K Cross-Section

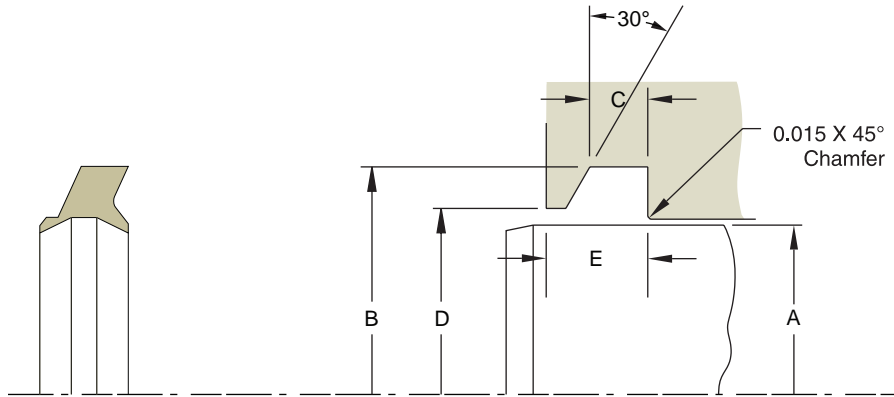


K installed in Rod Gland

8

09/01/07

Gland Dimensions — K Profile



Please refer to Engineering Section 2, page 2-8 for surface finish and additional hardware considerations.

Table 8-18. K Gland Dimensions — Inch

A Rod Diameter	B Groove Diameter	C Groove Width	D Shoulder Diameter	E Max. Wiper Axial Width	Part Number
+ .000/- .002	+ .005/- .000	+ .005/- .000	+ .005/- .000		
0.500	0.760	0.155	0.625	0.315	4615K00500
0.562	0.822	0.155	0.687	0.315	4615K00562
0.625	0.885	0.155	0.750	0.315	4615K00625
0.687	0.947	0.155	0.812	0.315	4615K00687
0.750	1.135	0.195	0.832	0.366	4615K00750
0.812	1.197	0.195	0.894	0.366	4615K00812
0.875	1.260	0.195	0.957	0.366	4615K00875
0.937	1.322	0.195	1.019	0.366	4615K00937
1.000	1.385	0.195	1.082	0.366	4615K01000
1.062	1.447	0.195	1.144	0.366	4615K01062
1.125	1.510	0.195	1.207	0.366	4615K01125
1.187	1.572	0.195	1.269	0.366	4615K01187
1.250	1.635	0.195	1.332	0.366	4615K01250
1.312	1.697	0.195	1.394	0.366	4615K01312
1.375	1.760	0.195	1.457	0.366	4615K01375
1.437	1.822	0.195	1.519	0.366	4615K01437
1.500	1.885	0.195	1.582	0.366	4615K01500
1.562	1.947	0.195	1.644	0.366	4615K01562
1.625	2.010	0.195	1.707	0.366	4615K01625
1.687	2.072	0.195	1.769	0.366	4615K01687
1.750	2.135	0.195	1.832	0.366	4615K01750
1.812	2.197	0.195	1.894	0.366	4615K01812
1.875	2.260	0.195	1.957	0.366	4615K01875
1.937	2.322	0.195	2.019	0.366	4615K01937
2.000	2.385	0.195	2.082	0.366	4615K02000
+ .000/- .003	+ .005/- .000	+ .005/- .000	+ .005/- .000		
2.125	2.510	0.195	2.207	0.366	4615K02125
2.250	2.760	0.255	2.407	0.483	4615K02250
2.375	2.885	0.255	2.532	0.483	4615K02375
2.500	3.010	0.255	2.657	0.483	4615K02500
2.625	3.135	0.255	2.782	0.483	4615K02625
2.750	3.260	0.255	2.907	0.483	4615K02750
2.875	3.385	0.255	3.032	0.483	4615K02875

For custom groove calculations, see Appendix C.

Table 8-18. K Gland Dimensions — Inch (Continued)

A Rod Diameter	B Groove Diameter	C Groove Width	D Shoulder Diameter	E Max. Wiper Axial Width	Part Number
+ .000/- .003	+ .005/- .000	+ .005/- .000	+ .005/- .000		
3.000	3.510	0.255	3.157	0.483	4615K03000
3.125	3.635	0.255	3.282	0.483	4615K03125
3.250	3.760	0.255	3.407	0.483	4615K03250
3.375	3.885	0.255	3.532	0.483	4615K03375
3.500	4.010	0.255	3.657	0.483	4615K03500
3.625	4.135	0.255	3.782	0.483	4615K03625
3.750	4.260	0.255	3.907	0.483	4615K03750
3.875	4.385	0.255	4.032	0.483	4615K03875
4.000	4.510	0.255	4.157	0.483	4615K04000
4.125	4.635	0.255	4.282	0.483	4615K04125
4.250	4.760	0.255	4.407	0.483	4615K04250
4.375	4.885	0.255	4.532	0.483	4615K04375
4.500	5.010	0.255	4.657	0.483	4615K04500
4.625	5.135	0.255	4.782	0.483	4615K04625
4.750	5.260	0.255	4.907	0.483	4615K04750
4.875	5.385	0.255	5.032	0.483	4615K04875
5.000	5.510	0.255	5.157	0.483	4615K05000
5.250	5.760	0.255	5.407	0.483	4615K05250
5.500	6.010	0.255	5.657	0.483	4615K05500
5.750	6.260	0.255	5.907	0.483	4615K05750
6.000	6.510	0.255	6.157	0.483	4615K06000
+ .000/- .004	+ .005/- .000	+ .005/- .000	+ .005/- .000		
6.250	6.760	0.255	6.407	0.483	4615K06250
6.500	7.010	0.255	6.657	0.483	4615K06500
6.750	7.260	0.255	6.907	0.483	4615K06750
7.000	7.510	0.255	7.157	0.483	4615K07000
7.500	8.010	0.255	7.657	0.483	4615K07500
8.000	8.510	0.255	8.157	0.483	4615K08000
8.500	9.010	0.255	8.657	0.483	4615K08500
+ .000/- .005	+ .005/- .000	+ .005/- .000	+ .005/- .000		
9.000	9.510	0.255	9.157	0.483	4615K09000
9.500	10.010	0.255	9.657	0.483	4615K09500
10.000	10.510	0.255	10.157	0.483	4615K10000

For custom groove calculations, see Appendix C.

NOTE: For sizes larger than those shown in the table, please contact your local Parker Seal representative.