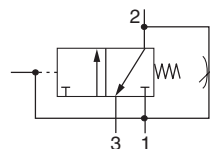


Combined Soft Start / Dump Valve and
Remote Operated Dump Valve

Symbol



- Modular design with 3/4" & 1" integral ports (BSPP or NPT)
- Provides for the safe introduction of pressure
- Automatically dumps downstream pressure on the loss of pilot signal
- Adjustable slow start
- Solenoid or air pilot options
- High flow & exhaust capability

P3Y Series Combined Soft Start / Dump Valves, provide for the safe introduction of pressure to machines or systems. Soft Start / Dump Valves when set, allow the pressure to gradually build to the set point before fully opening to deliver full flow at line pressure.

The controlled introduction of pressure can be an important safety factor and prevent damage to tooling when air pressure is introduced at machine or system start up.

Options

P3YTA		9	6	P	C	N	Solenoid type only	
Basic series		Thread type*		Pilot type		Solenoid voltage		
Soft Start / Dump Valve P3YTA		BSPP 1		External air pilot P		2CN 24VDC		
		NPT 9		Solenoid pilot S				
		Port size		Actuator interface		Solenoid type		
		3/4 6		30mm operator C		A 30mm CNOMO coil		
		1 8		Threaded air pilot P		D 30mm CNOMO coil (M12 connection)		

*** Note:** For 1-1/2" ported unit, please order P3YKA*BCP port block kit separately.

Bold items are most common.

Ordering information

Port size	Description	Flow dm ³ /s (scfm)	Max. bar (psig)	Min temp °C (°F)	Max temp °C (°F)	Height mm (inches)	Width mm (inches)	Depth mm (inches)	Weight kg (lb)	Part number†
3/4"	Air pilot operated	175 (371)	17.5 (254)	-10 (14)	60 (140)	145 (5.71)	90 (3.5)	104 (4.1)	1.4 (3.1)	P3YTA96PPN
3/4"	24VDC 30mm coil	175 (371)	16 (232)	-10 (14)	60 (140)	130 (5.12)	90 (3.5)	104 (4.1)	1.6 (3.5)	P3YTA96SCNA2CN
1"	Air pilot operated	200 (424)	17.5 (254)	-10 (14)	60 (140)	130 (5.12)	90 (3.5)	104 (4.1)	1.4 (3.1)	P3YTA98PPN
1"	24VDC 30mm coil	175 (371)	16 (232)	-10 (14)	60 (140)	130 (5.12)	90 (3.5)	104 (4.1)	1.6 (3.5)	P3YTA98SCNA2CN

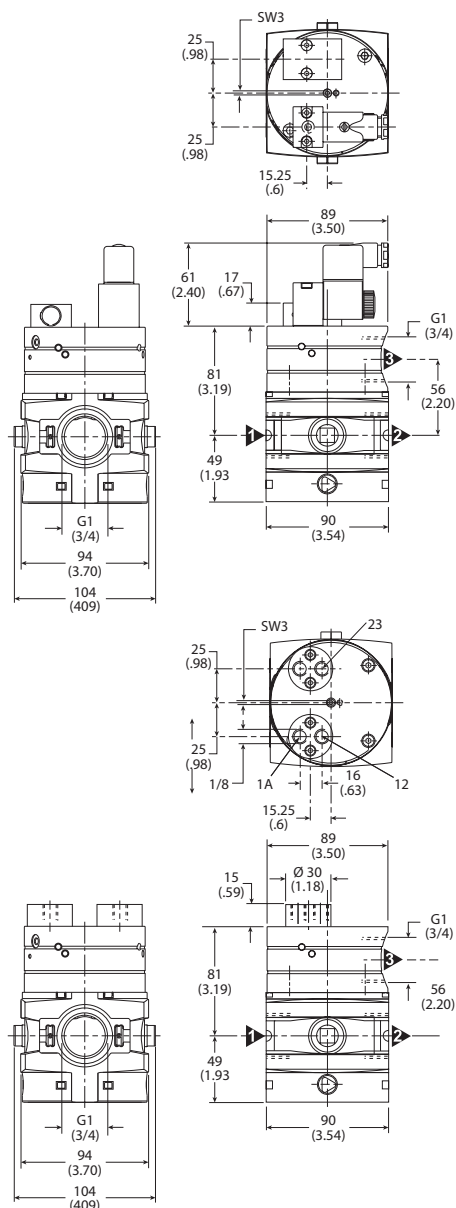
† Standard part numbers shown in bold. For other models refer to Options chart above.

Specifications

Fluid	Compressed air
Max. pressure solenoid operated 30mm coil	16 bar (232 psig)
Minimum operating pressure	2 bar (29 psig)
Temp. range* solenoid operated	-10°C to 60°C (14°F to 140°F)
Temp. range* air pilot operated	-10°C to 60°C (14°F to 140°F)
Air pilot port	1/8"
Exhaust port	1"
Gauge port	1/4"
Typical flow with 6.3 bar (91 psig) inlet pressure and 1 bar (14.5 psig) pressure drop	3/4" 175 dm ³ /s (371 scfm) 1" 200 dm ³ /s (424 scfm)

* Air supply must be dry enough to avoid ice formation at temperatures below 2°C (35.6°F)
Snap pressure: Full flow when downstream pressure reaches 50% of the inlet pressure

Dimensions mm (inches)

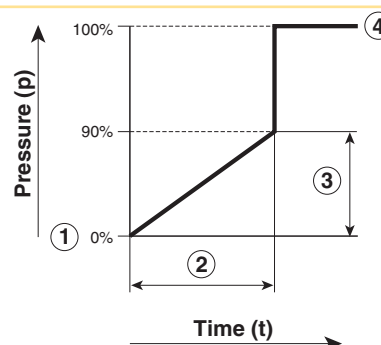


Material specifications

Body	Aluminium
Body cover	ABS
Valve	Brass / NBR composite
Pilot valve booster	Aluminum
Seals	Nitrile NBR

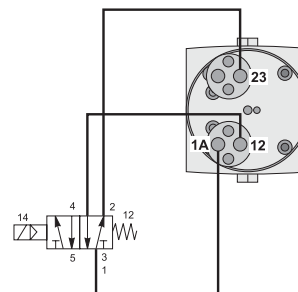
Note: For solenoid coil and cable plug options see page 24.

Flow characteristics



- ① Start signal
- ② Switching time delay
- ③ Gradual pressure build up
- ④ Operating pressure $p^2 (= p^1)$

Combined start / stop function



Combined start / stop function with acknowledgement

