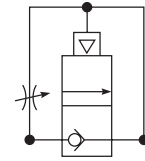


Soft Start Valve



Symbol



- Integral 3/4" or 1" ports
- Smooth start-up of pneumatic system
- Air pilot operation
- Adjustable slow start
- High flow

Options

P3YSA
9
6
Y
0
N

Basic series	Thread type*	Port size
Soft Start Valve P3YSA	BSPP 1	3/4 6
	NPT 9	1 8

* Note: For 1-1/2" ported unit, please order P3YKA*BCP port block kit separately.
Bold items are most common.

Ordering information

Port size	Description	Flow dm ³ /s (scfm)	Max. bar (psig)	Min temp °C (°F)	Max temp °C (°F)	Height mm (inches)	Width mm (inches)	Depth mm (inches)	Weight kg (lb)	Part number†
3/4"	Soft start valve	153 (324)	17.5 (254)	-10 (14)	60 (140)	85 (3.3)	90 (3.5)	97 (3.8)	.8 (1.8)	P3YSA96Y0N
1"	Soft start valve	153 (324)	17.5 (254)	-10 (14)	60 (140)	85 (3.3)	90 (3.5)	97 (3.8)	.8 (1.8)	P3YSA98Y0N

† Standard part numbers shown in bold. For other models refer to Options chart above.

Specifications

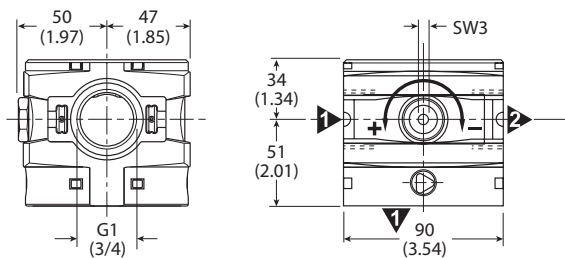
Fluid	Compressed air
Max. pressure air pilot operated	17.5 bar (254 psig)
Minimum operating pressure	2 bar (29 psig)
Temp. range* solenoid operated	-10°C to 60°C (14°F to 140°F)
Temp. range* air pilot operated	-10°C to 60°C (14°F to 140°F)
Typical flow with 6.3 bar (91 psig) inlet pressure and 1 bar (14.5 psig) pressure drop	180 dm ³ /s (381 scfm)

* Air supply must be dry enough to avoid ice formation at temperatures below 2°C (35.6°F)
Snap pressure: Full flow when downstream pressure reaches 50% of the inlet pressure

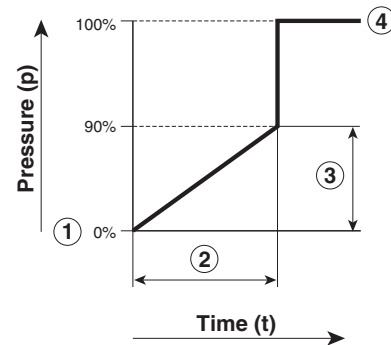
Material specifications

Body	Aluminium
Body cover	ABS
Valve	Brass / NBR composite
Pilot valve booster	Aluminum
Seals	Nitrile NBR

Dimensions mm (inches)



Flow characteristics



- ① Start signal
- ② Switching time delay
- ③ Gradual pressure build up
- ④ Operating pressure p² (= p¹)