

- Cetop DO3 / NG6 Pressure Intensifier
- End pressure up to 500 bar / 7,000 psi
- Multiple intensification ratios available
- Reciprocating - delivers continuous flow during pressure build up
- All high pressure valves are integrated including a p.o. check valve

## The MP-C Pressure Intensifier

Ratio (i)	Max. Inlet flow (LPM / GPM)	Outlet Flow Q1 (LPM / GPM)	Outlet Flow Q2 (LPM / GPM)	Max. Supply Pressure (bar / psi)	Max. Output Pressure (bar / psi)
1.5	8.0 / 2.1	0.8 / 0.21	0.3 / 0.08	200 / 2,900	300 / 4,350
2.0	8.0 / 2.1	0.8 / 0.21	0.2 / 0.08	200 / 2,900	400 / 5,800
3.4	15.0 / 4.0	2.2 / 0.58	0.5 / 0.13	147 / 2,132	500 / 7,250
4.0	14.0 / 3.7	1.8 / 0.47	0.4 / 0.10	125 / 1,812	500 / 7,250
5.0	14.0 / 3.7	1.4 / 0.37	0.3 / 0.08	100 / 1,450	500 / 7,250
7.0	13.0 / 3.4	1.1 / 0.29	0.2 / 0.05	71 / 1,036	500 / 7,250
9.0	13.0 / 3.4	0.7 / 0.19	0.1 / 0.03	56 / 806	500 / 7,250

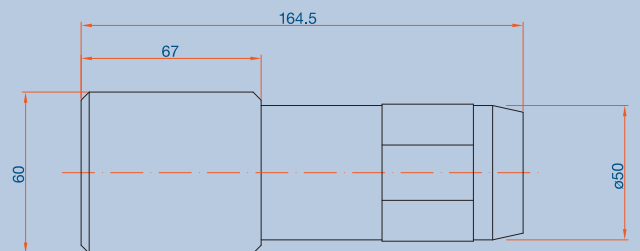
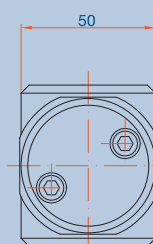
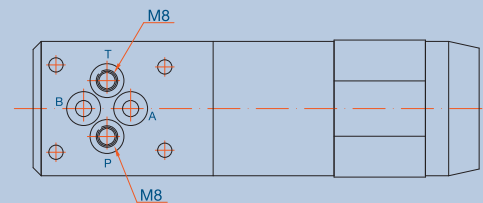
Weight : 2.7 kg

### Ordering code

Intensification							
1.5	2.0	3.4	4.0	5.0	7.0	9.0	

### Example

MP-C with intensification 4.0: MP-C-4.0



Dimensions in mm