



- Features**
- Control Category 3 to EN 954-1
  - 1 enabling circuit
  - Enable delay time can be modified
  - Monitoring of mechanical position switches, safety switches, solenoid interlocks, coded magnet sensors or E-stops
  - Can be changed from NO-NC to NC-NC contact combination
  - Can be used as emergency-stop controller for Category 0 to EN 60204-1
  - Monitoring for short-circuit between connections with NO-NC contact combination
  - ISD Integral System Diagnostics
  - Connection of input expansion modules possible

**Dimensions** 55 x 75 x 110 mm

**ISD The following faults are recognized by the safety controller and indicated by means of ISD**

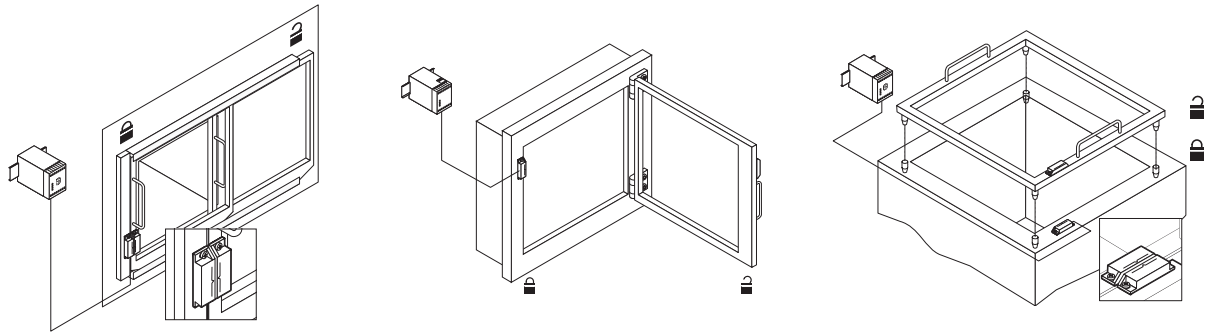
- Failure of door contacts to open or close
- Short-circuits on or between the switch connections
- Interruption of the switch connections
- Failure of the unit's internal safety relay to pull-in or drop-out
- Faults on the input circuits or on the relay control of the guard door monitor

<b>Model Designation</b>	<b>AES 2135-24VAC</b>	<b>AES 2165-24VAC</b>
	<b>AES 2135-110VAC</b>	<b>AES 2165-110VAC</b>
	<b>AES 2135-230VAC</b>	<b>AES 2165-230VAC</b>

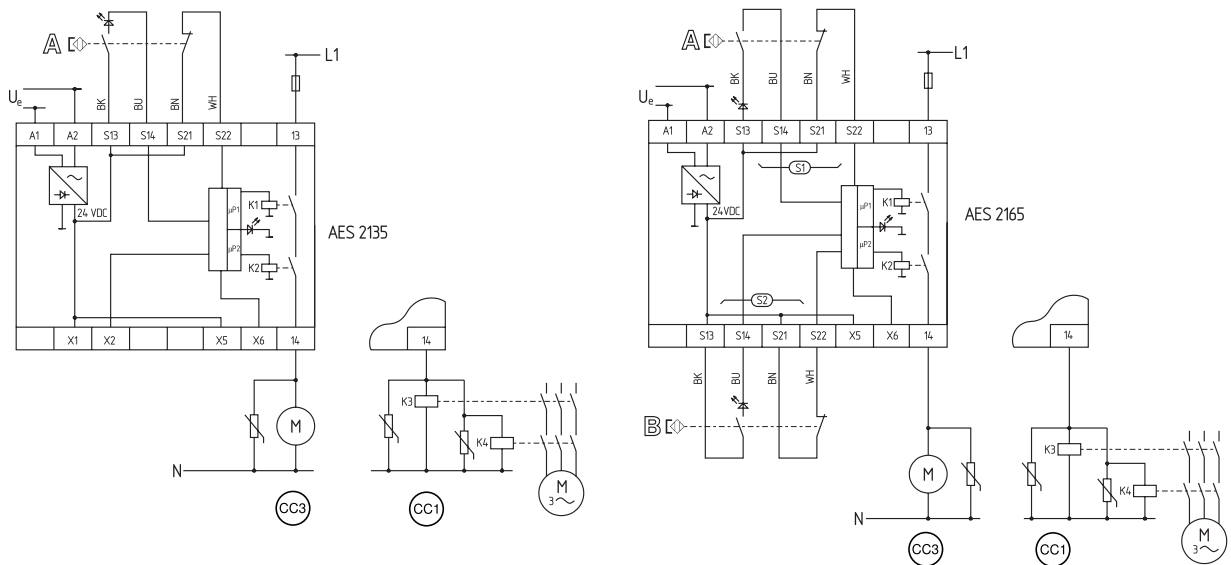
**Approvals** BG UL CSA

# AES 2135/AES 2165

## Typical Applications



## Typical Wiring Diagram



### Application Notes

- AES to achieve Control Category 3 to EN 954-1.
- Monitoring a sliding, hinged or removable guard device, each using a safety coded magnet A.
- If the load is directly switched by the AES, the complete system can be classified in Control Category 3 to EN 954-1.

- If one or two external relays or contactors are used to switch the load, the system can then only be classified in Control Category 3 to EN 954-1 if exclusion of the fault "Failure of the external contactors" can be substantiated and is documented, e.g. by using reliable de-rated contactors. A second contactor leads to an increase in

the level of security by redundant switching of the load.

- The wiring diagram is with guard devices closed and shows the de-energized condition.

5

### Circuit Options

- **Modification for 2 NC Contacts**  
The controller can be modified to monitor two normally closed contacts by jumping between the terminals X1 and X2. The short circuit monitoring between connections then becomes inoperative.

- **Extension of Enable Delay Time**  
The enable delay time can be increased from 0.1 s to 1 s by jumping between the terminals X5 and X6.