

## Datasheet - BN 20-10Z

Magnetic reed switch / BN 20

 Preferred typ

- Non-contact principle
- With pre-wired cable
- 1 Reed kontakts
- Long life
- 104 mm x 52 mm x 47 mm
- Aluminium enlosure
- Actuating distance up to 50 mm depending on actuating magnet and version
- Screw connection
- Highly resistant to vibration
- Available for actuation from front or side

(Minor differences between the printed image and the original product may exist!)


### Ordering details

Product type description	BN 20-10Z
Article number	101172882
EAN code	4030661301761

### Approval

Approval	-
----------	---

### Global Properties

Product name	BN 20
Standards	-
Compliance with the Directives (Y/N) 	Yes
suitable for elevators (Y/N)	No
Active principle	Magnetic drive
Materials	
- Material of the housings	Aluminium
- Material of the active surface	Metal film
Housing construction form	rectangular
Weight	285 g
Recommended actuator	2 x BP 10, 2 x BP 15/2, BP 20, BP 31, BP 11, BP 12, BP 21 N, BE 20

## Mechanical data

---

Design of electrical connection	Screw connection
Mechanical life	1.000.000.000 operations
Electrical lifetime	1.000.000 ... 1.000.000.000 operations
Switching frequency	max. 300/s
Actuating planes	Actuation from side
Active area	lateral
Switch distance $S_n$	12 mm ... 45 mm 2 x BP 10 = 12 mm 2 x BP 15/2 = 12 mm BP 20 = 15 mm BP 31 = 15 mm BP 11 = 15 mm BP 12 = 25 mm BP 21N = 20 ... 45 mm BE 20 = 15 mm
- notice	Actuating distance up to 45 mm depending on actuating magnet and version
Type of actuation	Magnet
resistance to shock	-
resistant to vibration	50 g, on sine wave oscillation
Bounce duration	0,3 ms ... 0,6 ms
Latching (Y/N)	No
bias magnet (Y/N)	Yes
Actuating speed	max. 18 m/s
Switching point accuracy	± 0,25 mm

## Ambient conditions

---

Ambient temperature	
- Min. environmental temperature	-25 °C
- Max. environmental temperature	+90 °C
Protection class	IP67

## Electrical data

---

Design of control element	Normally open contact (NO)
Number of shutters	1 piece
Number of openers	0 piece
Switching time - Close	0,3 ms ... 1.5 ms
Switching time - Open	-
Voltage type	VAC
Dielectric strength	> 600 VAC (50 Hz)
Switching voltage	max. 250 VAC
Switching current	max. 3 A
Switching capacity	max. 120 VA / W

## Outputs

---

Design of control output	Reed contacts
--------------------------	---------------

## LED switching conditions display

---

LED switching conditions display (Y/N)	No
--	----

## ATEX

Explosion protection categories for gases	None
Explosion protected category for dusts	None

## Dimensions

Dimensions of the sensor	
- Width of sensor	104 mm
- Height of sensor	52 mm
- Length of sensor	47 mm

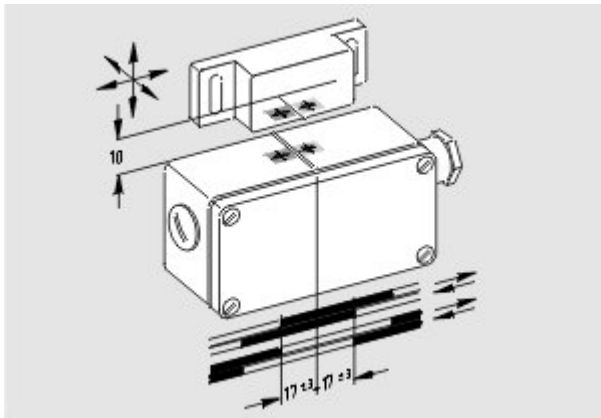
## notice

The opening and closing functions depend on the direction of actuation, the actuating magnets and the polarity of the actuating magnets. When the switches and actuators come together, the colours must coincide: Red (S) to red (S) and green (N) to green (N).




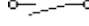
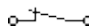
## Included in delivery

Actuators must be ordered separately.

## Diagram



Note Diagram

-  positive break NC contact
-  active
-  no active
-  Normally-open contact
-  Normally-closed contact

## Documents

**Declaration of conformity** (en) 118 kB, 26.02.2014

Code: \_\_bn\_p01\_en

**Declaration of conformity** (de) 188 kB, 10.07.2012

Code: \_\_bn\_p01

**notice - Switch distance** (de) 36 kB, 07.08.2009

Code: s\_bnbsp01

notice - Switch distance (nl) 39 kB, 07.08.2009

Code: s\_bnbsp04

notice - Switch distance (fr) 41 kB, 07.08.2009

Code: s\_bnbsp03

notice - Switch distance (pt) 39 kB, 07.08.2009

Code: s\_bnbsp10

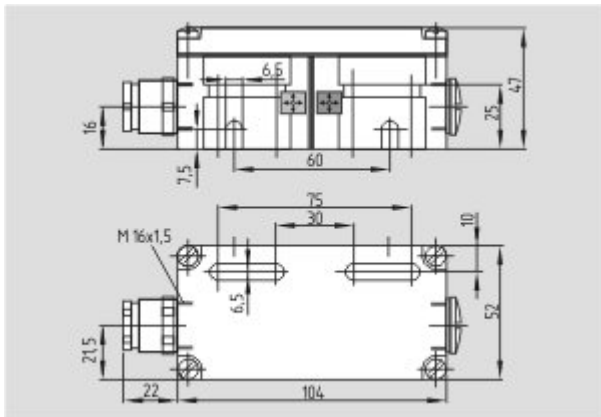
notice - Switch distance (it) 40 kB, 07.08.2009

Code: s\_bnbsp05

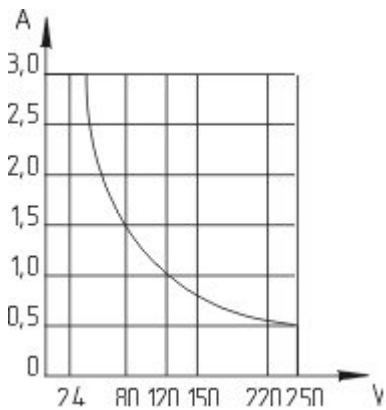
notice - Switch distance (es) 38 kB, 07.08.2009

Code: s\_bnbsp09

## Images



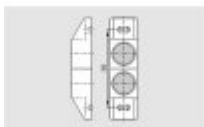
Dimensional drawing (basic component)



Characteristic curve

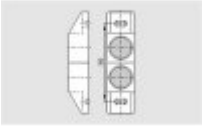
## System components

### Actuator



#### 101059927 - BP 2x21 S

- Al-metal housing
- S-pole marked red
- Suitable for mounting on ferrous material



**101059928 - BP 2x21 N**

- Al-metal housing
- N-pole marked green
- Suitable for mounting on ferrous material



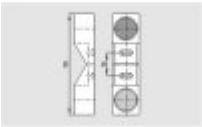
**101057534 - BP 21 S**

- Al-metal housing
- S-pole marked red
- Suitable for mounting on ferrous material



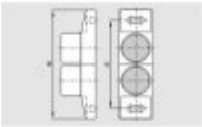
**101057536 - BP 21 N**

- Al-metal housing
- N-pole marked green
- Suitable for mounting on ferrous material



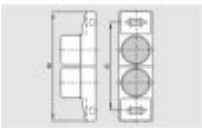
**101059921 - BP 21**

- Al-metal housing
- S-pole marked red
- N-pole marked green
- Suitable for mounting on ferrous material



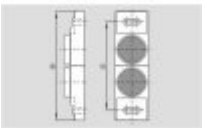
**101059926 - BP 2x12 S**

- Al-metal housing
- S-pole marked red
- Suitable for mounting on ferrous material



**101059925 - BP 2x12 N**

- Al-metal housing
- N-pole marked green
- Suitable for mounting on ferrous material



**101059917 - BP 12 N**

- Al-metal housing
- N-pole marked green
- Suitable for mounting on ferrous material

**101059916 - BP 12**

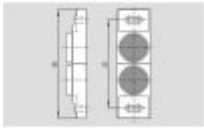
- Al-metal housing
- S-pole marked red
- N-pole marked green
- Suitable for mounting on ferrous material



---

**101059930 - BP 2x11 S**

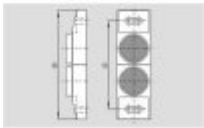
- Al-metal housing
- S-pole marked red
- Suitable for mounting on ferrous material



---

**101059929 - BP 2x11 N**

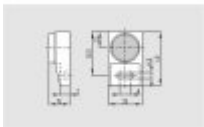
- Al-metal housing
- N-pole marked green
- Suitable for mounting on ferrous material



---

**101057533 - BP 11 S**

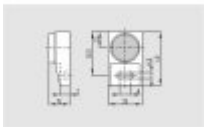
- Al-metal housing
- S-pole marked red
- Suitable for mounting on ferrous material



---

**101059923 - BP 11 N**

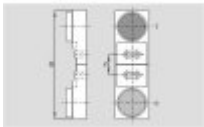
- Al-metal housing
- N-pole marked green
- Suitable for mounting on ferrous material



---

**101059922 - BP 11**

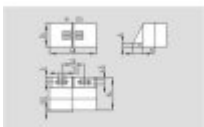
- Al-metal housing
- S-pole marked red
- N-pole marked green
- Suitable for mounting on ferrous material



---

**101057521 - BP 31 S**

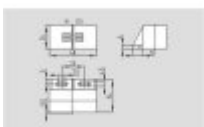
- thermoplastic enclosure
- S-pole marked red
- Suitable for mounting on ferrous material with a distance of 20 mm

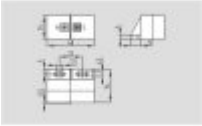


---

**101057520 - BP 31 N**

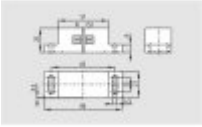
- thermoplastic enclosure
- N-pole marked green
- Suitable for mounting on ferrous material with a distance of 20 mm





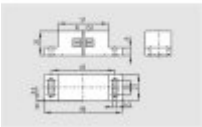
**101057530 - BP 31**

- thermoplastic enclosure
- S-pole marked red
- N-pole marked green
- Suitable for mounting on ferrous material with a distance of 20 mm



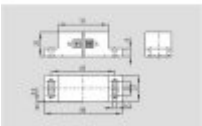
**101057541 - BP 20 S**

- Al-metal housing
- S-pole marked red
- Suitable for mounting on ferrous material with a distance of 20 mm



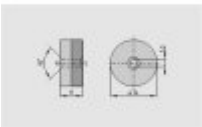
**101057538 - BP 20 N**

- Al-metal housing
- N-pole marked green
- Suitable for mounting on ferrous material with a distance of 20 mm



**101057549 - BP 20**

- Al-metal housing
- S-pole marked red
- N-pole marked green
- Suitable for mounting on ferrous material with a distance of 20 mm



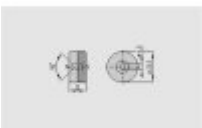
**101057553 - BP 34**

- thermoplastic enclosure
- S-pole marked red
- N-pole marked green
- Suitable for mounting on ferrous material with a distance of 25 mm



**101060165 - BP 15/2**

- Unenclosed
- Polarity stamped in
- Suitable for mounting on ferrous material with a distance of 18 mm



**101060163 - BP 15**

- thermoplastic enclosure
- N-pole marked green
- S-pole marked red
- Suitable for mounting on ferrous material with a distance of 18 mm

**101057531 - BP 10**

- Unenclosed
- Colour coding of poles by labels



---

K.A. Schmersal GmbH & Co. KG, Möddinghofe 30, D-42279 Wuppertal

The data and values have been checked thoroughly. Technical modifications and errors excepted.

Generiert am 16.08.2014 - 06:51:54h Kasbase 2.2.18.F DBI

Image

Image  
et=sS  
e