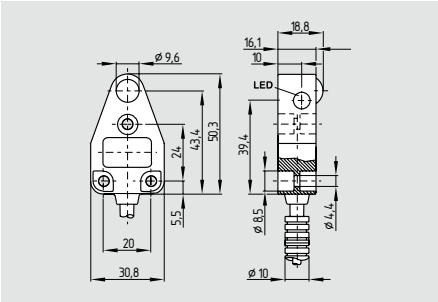


SLB 200



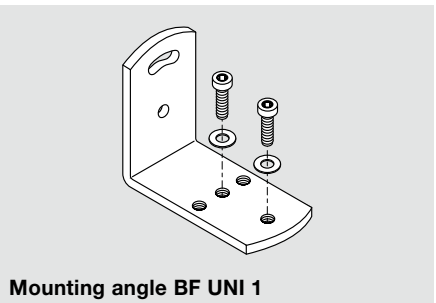
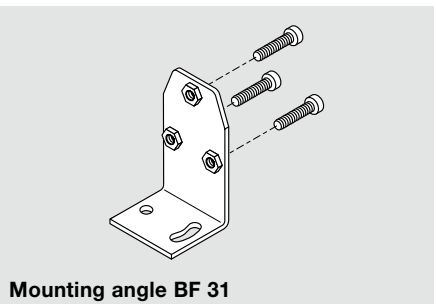
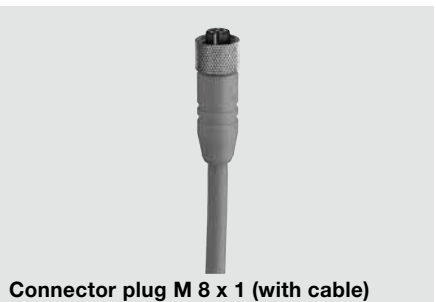
- Control Category 2* to EN 954-1
- Range to 4 m
- LEDs visible from both sides
- Protection class IP 67

Technical data

Standards: IEC/EN 61496
Control Category: 2
Enclosure: ABS
10 % GF
Enclosure dimensions: 31 x 50.5 x 19 mm
Connection: emitter: 10 cm conductor,
M8, 3-pole coupler socket
receiver: 10 cm conductor,
M8, 4-pole coupler socket
Max. cable length: 50 m
Protection class: IP 67
Response time: 30 ms *
Range: 4 m
Start/Restart interlock: *
Contactor control: *
Light emission wavelength: 880 nm
U_e: 24 VDC ± 20%
Safety outputs: *
Angle of radiation: ± 4°
Min. size of object: 9 mm Ø
LED status indication: soiling, switching condition and power on
Ambient temperature: - 10 °C ... + 55 °C
Storage and transport temperature: - 20 °C ... + 80 °C

* only in combination with safety monitoring module SLB 200-C04-1R

System components



Approvals



Ordering details

SLB 200-①31-21

No.	Option	Description
①	E	Emitter
	R	Receiver

Note

The system components (safety monitoring module, cable, etc.) are not included in delivery.

Ordering details

Monitoring of safety light barriers
SLB 200-C04-1R refer to page 16
Connector plug M8
emitter:
female connector KDE M8-3 (without cable)
female connector KDE M8-3-2m
female connector KDE M8-3-5m
receiver:
female connector KDR M8-4 (without cable)
female connector KDR M8-4-2m
female connector KDR M8-4-5m
Mounting angles BF 31
Mounting angles universal BF UNI 1