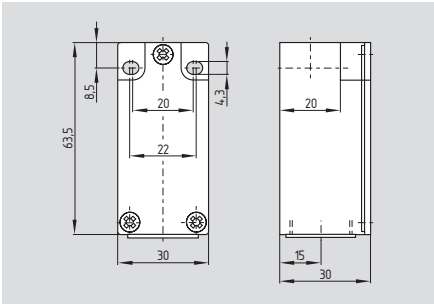


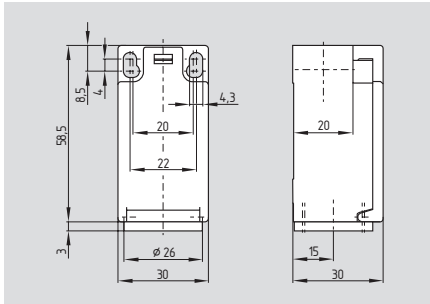
Position switches

Z/T 235



- Metal enclosure
- Available with 2 positive break NC contacts
- Snap action with constant contact pressure up to switching point
- Slow action available with overlapping or staggered contacts
- Wiring compartment
- 1 cable entry M20
- Wide range of alternative actuators
- Actuator heads can be repositioned by 4 x 90°
- Angle of roller lever adjustable in 10° steps
- Good resistance to oil and petroleum spirit
- Metal roller available on request
- EX version available
- AS-Interface Safety at Work available

Z/T 236



- Thermoplastic enclosure
- Double insulated □
- Available with 2 positive break NC contacts
- Snap action with constant contact pressure up to switching point
- Slow action available with overlapping or staggered contacts
- 1 cable entry M20
- Wide range of alternative actuators
- Actuator heads can be repositioned by 4 x 90°
- Angle of roller lever adjustable in 10° steps
- Good resistance to oil and petroleum spirit
- AS-Interface Safety at Work available

Technical data

Standards: IEC/EN 60947-5-1
BG-GS-ET-15

Design: fixings to EN 50047

Enclosure: Z/T 235: zinc die-cast, enamel finish
Z/T 236: Glass fiber reinforced thermoplastic

Protection class: IP67 to EN 60529

Contact material: silver

Contact type: change-over contact
with double break, type Zb or 2 NC contacts,
with galvanically separated contact bridges

Switching principle: ⊖ IEC 60947-5-1
slow or snap action,
NC contacts with positive break

Connection: screw terminals

Cable section: max. 2.5 mm²,
min. 0.75 mm²
(incl. conductor ferrules)

Cable entry: 1 x M20

U_{imp}: 6 kV
connector: 0.8 kV

U_i: 500 V
connector: 50 V

I_{the}: 10 A

Utilization category: AC-15, DC-13

I_e/U_e: 4 A / 230 VAC
1 A / 24 VDC
connector: 4 A / 50 V

Max. fuse rating: 6 A gG D-fuse

Ambient temperature: -30 °C ... +80 °C

Mechanical life: 20 million operations

Switching frequency: max. 5,000/h

Bounce duration: snap action: < 3 ms;
slow action: in accordance
with actuating speed

Switchover time: snap action: > 5.5 ms;
slow action: in accordance
with actuating speed

Classification:

Standards: EN ISO 13849-1

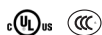
B_{10d} (NC): 20,000,000

B_{10d} (NO): 1,000,000
for max. 10% ohmic contact load

Mission time: 20 years

$$MTTF_d = \frac{B_{10d}}{0,1 \times n_{op}} \quad n_{op} = \frac{d_{op} \times h_{op} \times 3600 \text{ s/h}}{t_{cycle}}$$

Approvals



Ordering details

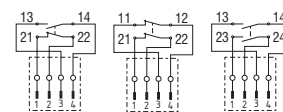
①② 23③-④Z⑤-⑥-⑦-⑧-⑨

No.	Option	Description
①	Z	Snap action ⊖
	T	Slow action ⊖
②	For the appropriate actuator: see page 1-115	
③	5	Metal housing
	6	Plastic housing
④	02	2 NC
	11	1 NO / 1 NC
	20	2 NO *
⑤	H	Slow action with staggered contacts
	UE	with overlapping contacts

Ordering details

No.	Option	Description
⑥	NPT	Cable entry M20
	ST	Cable entry NPT 1/2"
		Connector M12
	2310	(A-Coding)
	1297	(B-Coding)
⑦	1297	Enclosure with transversely slotted mounting holes
⑧	2138	Roller lever 7H for safety duties
⑨	1637	Gold-plated contacts

Note

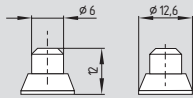


Caution! The versions with connector may only be used in PELV circuits to EN 60204-1.

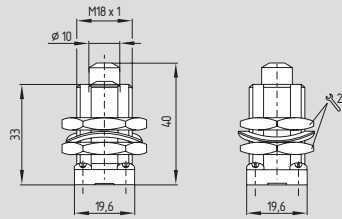
* Switches with 2 NO contacts (20) are only available for T (Slow Action) versions and are only suitable for positioning tasks.

Position switches

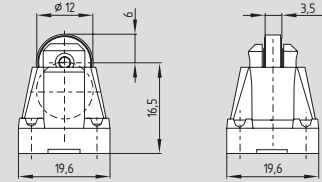
Plunger / lever options



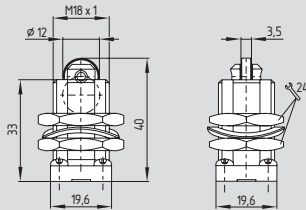
Plunger S



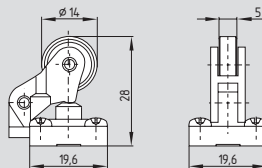
Plunger 4S



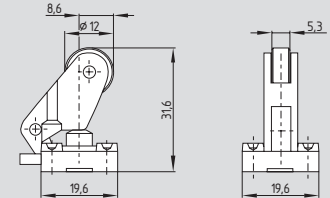
Plunger R



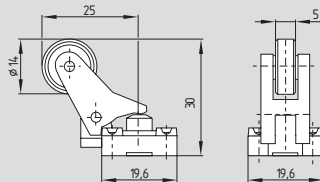
Plunger 4R



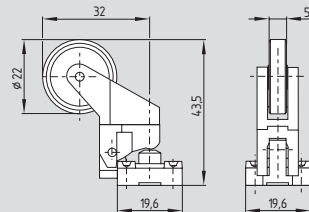
Offset Roller Lever 1R



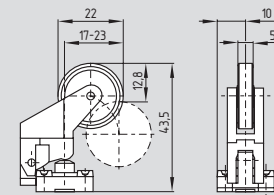
Offset Roller K



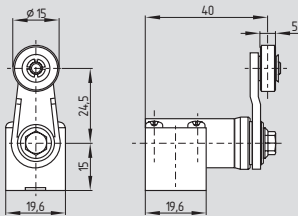
Angle Roller Lever 3K



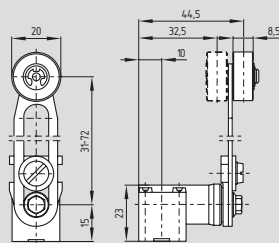
Angle Roller Lever 4K



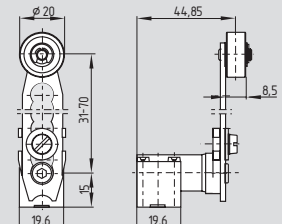
Angle Roller Lever K4



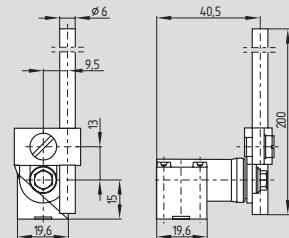
Roller Lever 1H



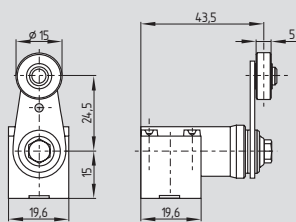
Roller Lever 7H



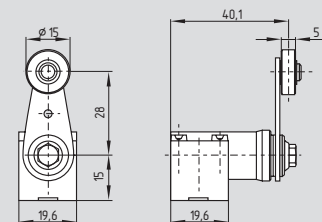
Roller Lever 7H-2138



Roller Lever 10H



Roller Lever 12H



Roller Lever 14H