

# Electromechanical Automation Sales Bulletin



**Bulletin #** SB1043 rev 2  
**Date:** October 31, 2016  
**To:** All Master Price Holders  
**Product:** MotionSizer  
**Subject:** Update your databases to include new products & bug fixes

**Parker Electromechanical Automation is pleased to announce update for MotionSizer.**

## New PM-DD direct drive servos added

Databases have been expanded to include the new PM-DD direct drive servo motors:

The screenshot shows the Parker MotionSizer software interface. The title bar reads "Parker MotionSizer - [Motor Selection - 1]". The menu bar includes File, Axis, Units, Window, and Help. The toolbar has buttons for New, Open, Save, and Help. The main window is divided into several sections:

- Left Panel:** A tree view showing the project structure: DD\_test.Dat, Axis #1, Axis Design, Velocity Profile, Motor Selection (selected), Report Generator, and Performance Curves.
- Top Section:** A table titled "PM-DOB03DxH@120VAC" comparing required and available motor specifications. The table has four columns: Required From Motor, Available From Motor, and Meets System Requirements. The rows include Motor Speed (100 rpm vs 250 rpm, 250 %), Motor Rated Torque (0.956970344 Nm vs 3 Nm, 313.49 %), Total Accel. Torque (1.6071 Nm vs 9 Nm, 560.01 %), Torque/Speed (Ref. Inertia To Motor vs Rotor Inertia, Ratio Load : Motor), and Pretest & Thermal (0.0574 kg-m² vs 0.000574 kg-m², 100 : 1).
- Search Parameters:** A section with a dropdown menu set to "Direct Drive" and a "Filter Motor List" button. It also shows "43 Motor(s) Found".
- DC Servo Brushless - Settings:** A section with a dropdown menu set to "Default", a "Motor Amb. Temp. [°C]" field set to 25, and checkboxes for "User Defined Amp./AC/DC Power Source", "Featured Products", and "Active Products".
- Motor Selection Table:** A table with columns: #, Result, Product Key, Drive/Amp., and Voltage. The table lists 19 motor options, all with a "Result" of "OK". The "Product Key" column is highlighted with a red box. The "Drive/Amp." and "Voltage" columns are also visible.

The status bar at the bottom shows the file path: C:\Users\jh17981\Desktop\DD\_test.Dat.

## How to Update

---

To update MotionSizer installations:

1. Download [http://divapps.parker.com/divapps/emn/faq/MotionSizer\\_update4.zip](http://divapps.parker.com/divapps/emn/faq/MotionSizer_update4.zip)
2. Close MotionSizer if open.
3. Open the zip file and place the files within the Parker Motion Sizer directory.

Older versions of these files can be deleted. Previous updates are included in the download.

For Win7 64bit:

C:\Program Files (x86)\Parker\Parker Motion Sizer

For XP and Win7 32bit:

Default file location is: C:\Program Files\Parker\Parker Motion Sizer\

This will need to be done for existing installations and after new installations.

## List of Corrections

---

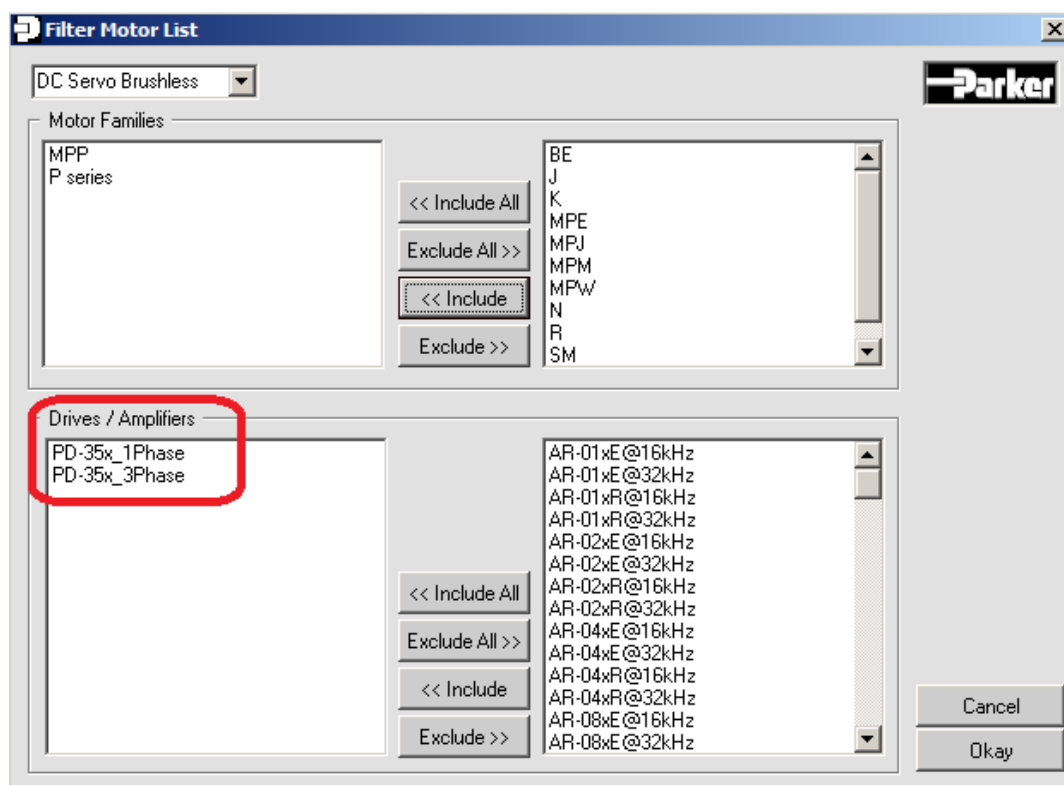
In addition to the PM-DD motors being added, here's a more detailed list of updates:

Minor bug: **MPP/MPJ with 6H not compatible with Pseries drives.**

This combination was removed. The 6H is the HyperfaceDSL absolute encoder, compatible with IPA and PSD.

Minor bug: **PD-35 3ph vs 1ph input**

The PD-35 can be run at 3phase 230vac input at 16.7Arms or 1phase at 11.7Arms. Both now appear as options.



Dynaserv products have been removed as these are obsolete.

If you have any questions, please contact:

- Technical Assistance, Applications Engineering Department (e-mail: [emn\\_support@parker.com](mailto:emn_support@parker.com) or call 800-358-9070 North America, 707-584-7558 International)