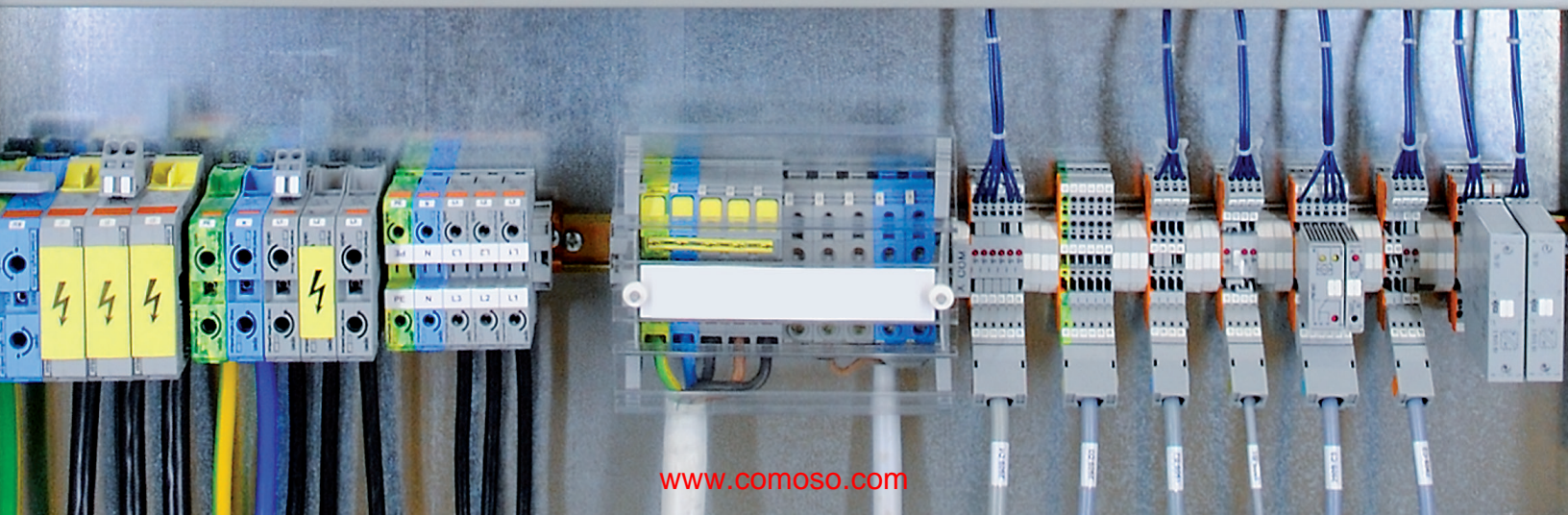
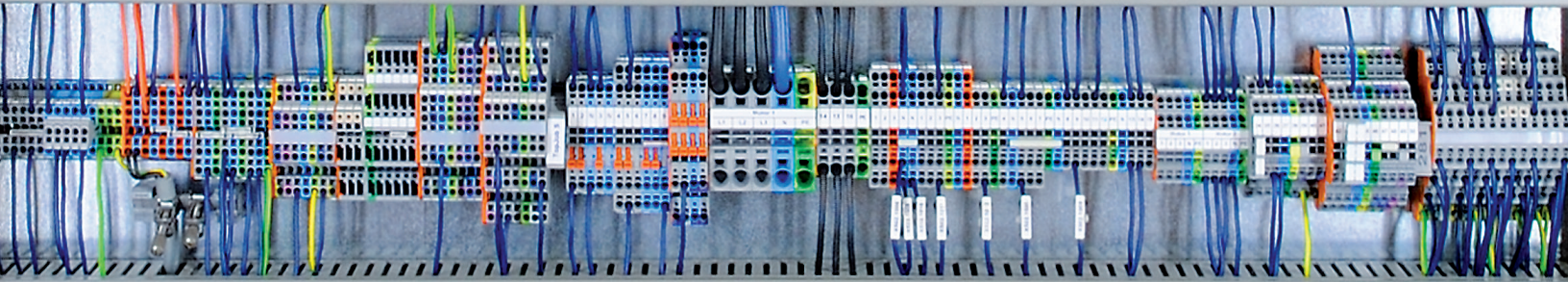
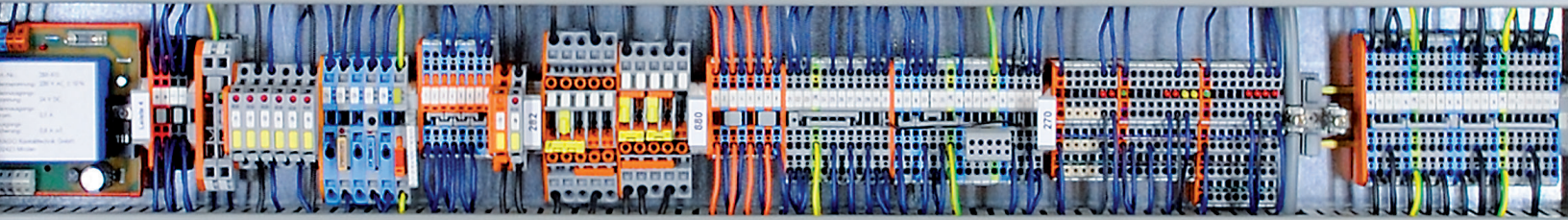
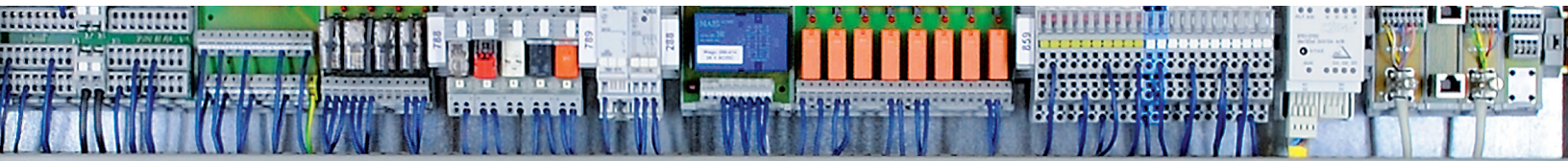


## Panel Accessories





# PANEL ACCESSORIES

Get the job done! In addition to interconnect and automation products, WAGO offers a complete range of accessories designed to make panel building fast and easy. From small tasks like wire preparation, to larger tasks such as marking and identifying all components in your control cabinet, we've got you covered. Our product range includes installation, cutting, stripping and crimping tools; test and measurement devices; as well as mounting and marking materials.



Wire Cutting and Stripping Tools



Crimping Tools and Ferrules



Test and Measuring Tools



DIN-Rail



Shield Connection System

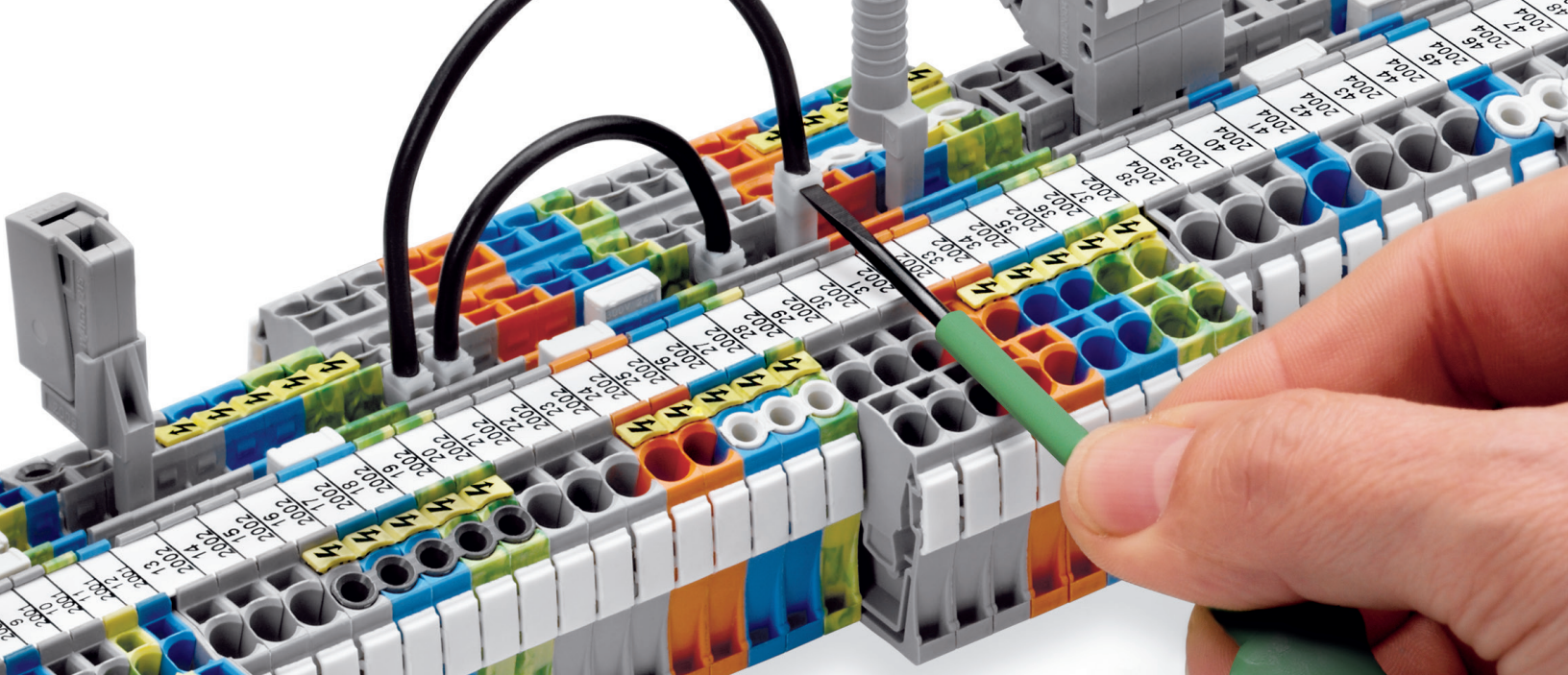


Printer and Marking Materials



<b>Operating Tools</b>	4 - 5
<b>Wire Cutting and Stripping</b>	6 - 7
<b>Crimping Tools</b>	8 - 9
<b>Cable cutting and Stripping</b>	10 - 11
<b>Ferrules</b>	12 - 15
<b>Test and Measurement Devices</b>	16 - 17
<b>DIN Rail and Accessories</b>	18 - 19
<b>Shield Connection System</b>	20 - 21
<b>Covers and Terminal Block Assemblies</b>	22 - 23
<b>smartDESIGNER</b>	24 - 25
<b>Marking and Labeling System</b>	26 - 35





# OPERATING TOOLS

The core technology of WAGO products is based upon our original, patented CAGE CLAMP® with no screws to torque down or ever retighten. The operation of the CAGE CLAMP® is simple – open the CAGE CLAMP® with the operating tool, which stays inserted so you have both hands-free to cut, strip, and insert the conductor. A variety of operating tools are available based upon the size and type of the terminal block or product that the wire is being connected to.



Operating tool stays inserted for hands-free wiring



Operating tool set



Angled operating tool for tight spaces



**Operating Tool with Partially Insulated Shaft**



**Operating Tool with Partially Insulated Shaft**



**Insulated Multipole Operating Tools for Front-Entry Terminal Blocks**



Item No.	Pack Unit	Item No.	Pack Unit	Item No.	Pack Unit
Operating tool, 2.5 x 0.4 mm blade for 279, 726, 727, 2000, 2001, 2020, 2200 and 2201 Series	210-719	1	Operating tool, 2.5 x 0.4 mm blade, short for 279, 726, 727, 2000, 2001, 2020, 2200 and 2201 Series	210-647	1
Operating tool, 3.5 x 0.8 mm blade, for 260, 261, 262, 264, 270, 280, 281, 290, 775, 776, 777, 769, 780, 781, 869, 870, 880, 2002, 2003, 2004, 2005, 2022, 2102, 2202, 2204, 2006, 2106 and 2206 Series	210-720	1	Operating tool, 2.5 x 0.4 mm blade, short, angled, for 279, 2000, 2001, 2020, 2200 and 2201 Series	210-648	1
Operating tool, 5.5 x 0.8 mm blade, for 282, 283, 284, 285, 782, 783, 784, 785, 2006, 2010, 2016, 2210, 2116 and 2216 Series	210-721	1	Operating tool, 3.5 x 0.5mm blade, short, for 260, 261, 262, 264, 270, 280, 281, 869, 870 and 880 series	210-657	
			Operating tool, 3.5 x 0.5 mm blade, short, angled ideal for 280 Series sensor/actuator blocks, along with 260, 261, 262, 264, 280, 281, 869, 870, 880, 2002 and 2004 Series	210-658	1
					Operating tool, Insulated suitable for 279 Series
					1-pole 209-129 1
					2-pole 279-432 1
					3-pole 279-433 1
					10-pole 279-440 1
					suitable for 264* 280, 281** Series
					1-pole 209-130 1
					2-pole 280-432 1
					3-pole 280-433 1
					4-pole 280-434 1
					5-pole 280-435 1
					6-pole 280-436 1
					7-pole 280-437 1
					8-pole 280-438 1
					9-pole 280-439 1
					10-pole 280-440 1
					suitable for 281 Series
					5-pole 281-440 1

\*Only 1- and 2-pole \*\*Only up to 3-pole

**Operating Tool Set with Partially Insulated Shafts**



**Control Cabinet Drawer for DIN 35 rail mounting 45 mm (H) x 54 mm (W) x 76 mm (D)**



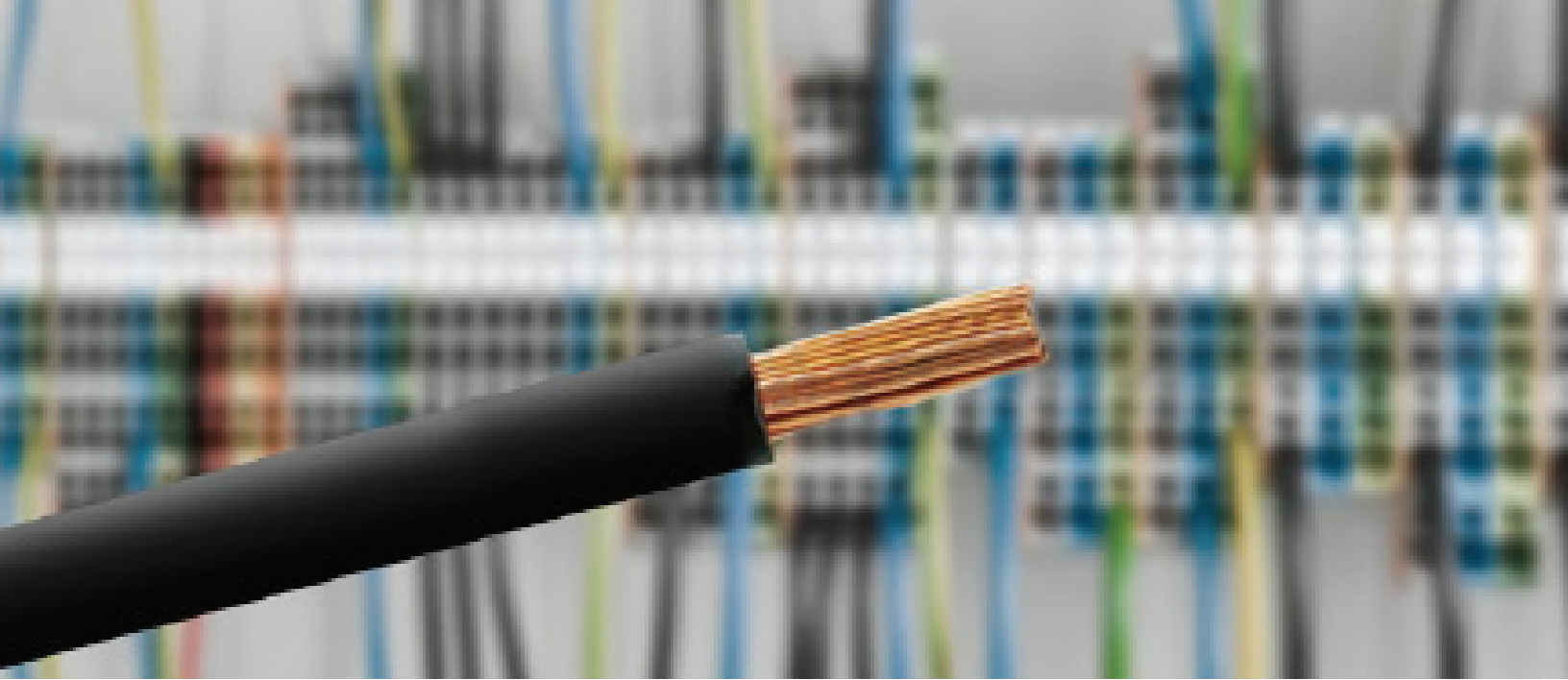
**Allen Wrench for 285 Series**



Item No.	Pack Unit	Item No.	Pack Unit	Item No.	Pack Unit
Operating tool set, 2.5 x 0.4 mm blade, 3.5 x 0.5 mm blade, 5.5 x 0.8 mm blade	210-722	1	Control Cabinet Drawer for DIN 35 rail mounting 45 mm (H) x 54 mm (W) x 76 mm (D)	709-591	1
					Partially insulated shaft, solid
					285-172 1
					Partially insulated shaft, anti-rotation protection
					285-173 1

(W) - Wide (H) - Height (D) - Deep





# WIRE CUTTING AND STRIPPING

Wire cutting and stripping is an integral part of installation, so having reliable, easy-to-use tools is vital. WAGO offers wire cutters that cut up to 2 AWG conductors and a large range of stripping tools for a variety of wire/cable sizes. Quickstrip tools save time providing the ability to cut then strip to the desired length. Replacement blades are also available in varying sizes.



Automatic stripping for control and sensor wires



Convenient, stackable, kit design



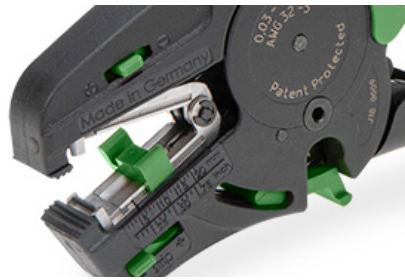
Intelligent bracket change system



Quickstrip Vario wire stripper  
integrated wire cutter  
32 ... 6 AWG

Replacement Blade Cassettes  
for Quickstrip tools

Stripping Pliers



Item No.	Pack Unit	Item No.	Pack Unit	Item No.	Pack Unit
206-1125	1	Standard blade for Quickstrip 206-1125		For sensor wires; Ø .13" ... .17"	
		206-1126	1	206-1481	1
		V blade (PTFE wire) for Quickstrip 206-1125		For control wires; Ø .17" ... .28"	
		206-1127	1	206-1482	1
		Blade set for 206-1125, oval blade			
		206-1128	1		

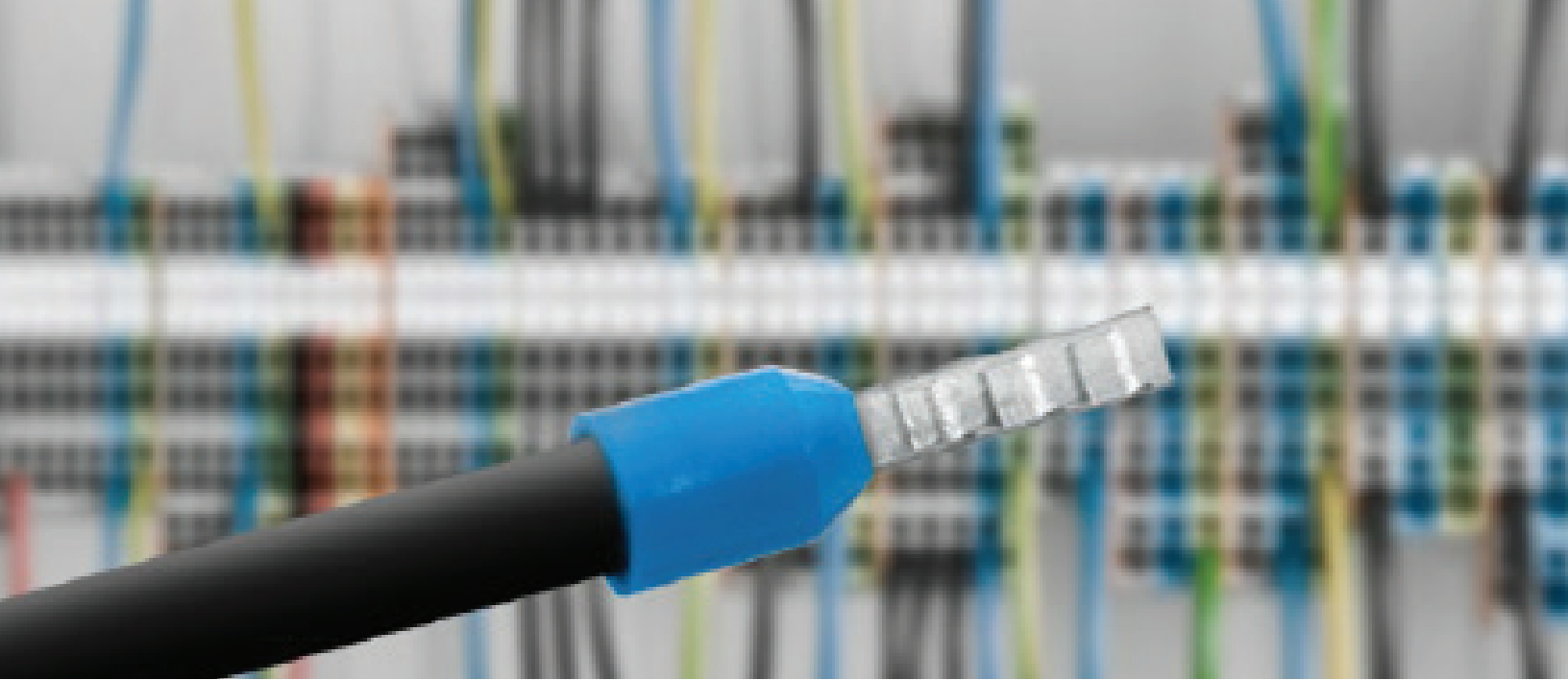
Cable Knife Kit  
Ø 0.16" ... 2.75"  
includes all cable brackets in an L-boxx mini

Cable Knife  
Ø 0.31" ... 1.10"  
with intelligent bracket change system



Item No.	Pack Unit	Item No.	Pack Unit		
206-1400	1	206-1403	1		





# CRIMPING TOOLS

The Variocrimp tools are the highest quality in the market. They produce a gas-tight crimp, both electrically and mechanically that leaves no room for oxidation between strands. The Variocrimp tools offer a consistent quality crimp – regardless of the user. Conductor and ferrule insertion is available from either side – accommodating both right and left-handed operators.



Self adjusting for wide wire range



Dedicated multi-slot crimping tool



Convenient, stackable, kit design



Variocrimp 4 crimping tool  
for insulated and uninsulated ferrules  
Self adjusting from 24 - 12 AWG



Variocrimp 16 crimping tool  
for insulated and uninsulated ferrules  
Selectable for 10 - 6 AWG



Crimping tool 25  
for insulated and uninsulated ferrules  
Dedicated crimp slot for 8, 6 and 4 AWG



Item No.	Pack Unit	Item No.	Pack Unit	Item No.	Pack Unit
Variocrimp 4 crimping tool		Variocrimp 16 crimping tool		Crimping tool 25	
206-1204	1	206-1216	1	206-1225	1

Crimping tool 50  
for insulated and uninsulated ferrules  
Dedicated crimp slot for 2 AWG and 1/0



Strip and crimp tool kit  
260 x 155 x 63 mm box  
containing 206-124 Quickstrip 4  
and 206-1204 Variocrimp 4 tools



Ferrule kit  
260 x 155 x 63 mm box containing insulated  
ferrules: 1000 pcs of 20 AWG (216-241),  
1000 pcs of 18 AWG (216-242), 1000pcs  
of 18 AWG (216-243), 500 pcs of 16 AWG  
(216-264), 500 pcs of 14 AWG (216-266)  
and 400 pcs of 12 AWG (216-267)



Item No.	Pack Unit	Item No.	Pack Unit	Item No.	Pack Unit
Crimping tool 50		Strip and crimp tool kit		Ferrule kit	
206-1250	1	60348435	1	60348433	1
		Empty box with dividers			
		60348577	1		
		Divider, long (max of 2 per box)			
		412-887	1		
		Divider, short (max of 3 per box)			
		413-887	1		



# CABLE CUTTING AND STRIPPING

Not all cables are the same, so having quality tools for different cable types is a major resource for installation. WAGO has an intuitive offering of cable cutting and stripping solutions specific for common round cables, in-socket applications, or data cable. Ergonomic design and integrated functions allow each tool to be used safely and effectively. Stackable kits are compatible with ferrule and tools kits for stripping and crimping.



Cable cutter for up to 2 AWG



Spiral cut cable stripper



Round cut cable stripper with adjustable strip depth



Cable Stripper, In-Socket  
 Ø .31" ... .51"

Cable Stripper, Universal  
 Ø .31" ... .51"  
 from 8 mm ... 13 mm

Cable Stripper, Data  
 Ø .18" ... .40"  
 from 4.5 mm to 10 mm



Item No.	Pack Unit	Item No.	Pack Unit	Item No.	Pack Unit
206-1441	1	206-1442	1	206-1451	1

Cable Cutter  
 for Cu & Al conductors up to 2 AWG

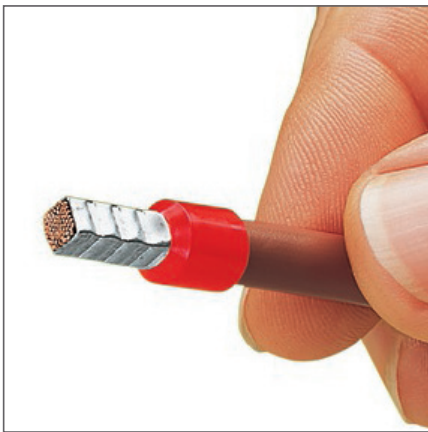


Item No.	Pack Unit		
206-118	1		

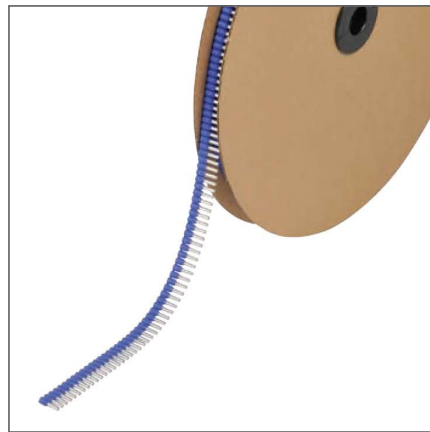


# FERRULES

While ferrules aren't required with WAGO products, we recognize many customers enjoy the added protection they offer. WAGO products with Push-in CAGE CLAMP® connection technology provide direct push-in of solid or ferruled conductors, saving installation time. WAGO offers both uninsulated and insulated ferrules. The insulated ferrules are also available as a twin ferrule, allowing you to connect two conductors into a single connection device.



A perfect gas-tight crimp – both electrically and mechanically reliable



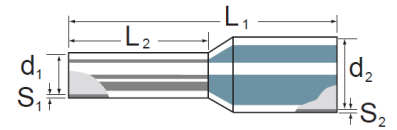
Insulated ferrules on a reel for use with automated machine



Twin ferrules for connecting two conductors

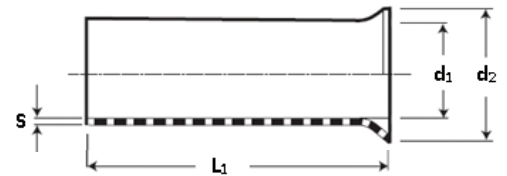


# Insulated Ferrules



Ferrule Size			Ferrule Part No.	Color	Dimensions (in mm)						Minimum Order Quantity	Crimping Tool Part No.
mm <sup>2</sup>	L <sub>2</sub>	AWG			L <sub>1</sub>	L <sub>2</sub>	D <sub>1</sub>	S <sub>1</sub>	D <sub>2</sub>	S <sub>2</sub>		
0.14	6	26	216-213	Gray	10	6	0.6	0.15	1.5	0.25	500	206-1204
0.14	8	26	216-218	Gray	12	8	0.6	0.15	1.5	0.25	500	206-1204
0.25	6	24	216-321	Yellow	10	6	0.85	0.15	1.8	0.25	1000	206-1204
0.25	8	24	216-301	Yellow	12	8	0.85	0.15	1.8	0.25	1000	206-1204
0.25	12	24	216-331	Light Blue	16	12	0.85	0.15	1.8	0.25	500	206-1204
0.34	6	22	216-322	Turquoise	10	6	0.85	0.15	2	0.25	1000	206-1204
0.34	8	22	216-302	Turquoise	12	8	0.85	0.15	2	0.25	1000	206-1204
0.34	12	22	216-260	Turquoise	14	12	0.85	0.15	2	0.25	1000	206-1204
0.50	6	20	216-221	White	12	6	1	0.15	2.6	0.25	1000	206-1204
0.50	8	20	216-201	White	14	8	1	0.15	2.6	0.25	1000	206-1204
0.50	10	20	216-241	White	16	10	1	0.15	2.6	0.25	1000	206-1204
0.75	6	18	216-222	Gray	12	6	1.2	0.15	2.8	0.25	1000	206-1204
0.75	8	18	216-202	Gray	14	8	1.2	0.15	2.8	0.25	1000	206-1204
0.75	10	18	216-242	Gray	16	10	1.2	0.15	2.8	0.25	1000	206-1204
0.75	12	18	216-262	Gray	18	12	1.2	0.15	2.8	0.25	1000	206-1204
1.00	6	18	216-223	Red	12	6	1.4	0.15	3	0.25	1000	206-1204
1.00	8	18	216-203	Red	14	8	1.4	0.15	3	0.25	1000	206-1204
1.00	10	18	216-243	Red	16	10	1.4	0.15	3	0.25	1000	206-1204
1.00	12	18	216-263	Red	18	12	1.4	0.15	3	0.25	1000	206-1204
1.50	6	16	216-224	Black	12	6	1.7	0.15	3.5	0.25	1000	206-1204
1.50	8	16	216-204	Black	14	8	1.7	0.15	3.5	0.25	1000	206-1204
1.50	10	16	216-244	Black	16	10	1.7	0.15	3.5	0.25	1000	206-1204
1.50	12	16	216-264	Black	18	12	1.7	0.15	3.5	0.25	1000	206-1204
1.50	18	16	216-284	Black	24	18	1.7	0.15	3.5	0.25	500	206-1204
2.08	8	14	216-205	Yellow	15	8	2.05	0.15	4.2	0.30	1000	206-1204
2.50	8	14	216-206	Blue	15	8	2.2	0.15	4.2	0.25	1000	206-1204
2.50	10	14	216-246	Blue	17	10	2.2	0.15	4.2	0.25	1000	206-1204
2.50	12	14	216-266	Blue	18	12	2.2	0.15	4.2	0.25	1000	206-1204
2.50	18	14	216-286	Blue	25	18	2.2	0.15	4.2	0.25	500	206-1204
4.00	10	12	216-207	Gray	18	10	2.8	0.2	4.8	0.30	500	206-1204
4.00	12	12	216-267	Gray	20	12	2.8	0.2	4.8	0.30	500	206-1204
4.00	18	12	216-287	Gray	26	18	2.8	0.2	4.8	0.30	100	206-1204
6.00	12	10	216-208	Yellow	20	12	3.5	0.2	6.3	0.30	100	206-1216
6.00	18	10	216-288	Yellow	26	18	3.5	0.2	6.3	0.30	100	206-1216
10.00	12	8	216-209	Red	22	12	4.5	0.2	7.6	0.40	100	206-1216
10.00	18	8	216-289	Red	28	18	4.5	0.2	7.6	0.40	100	206-1216
16.00	12	6	216-270	Blue	22	12	5.8	0.2	8.8	0.40	100	206-1216, 206-1225
16.00	18	6	216-210	Blue	28	18	5.8	0.2	8.8	0.40	100	206-1216, 206-1225
25.00	22	4	216-453	Yellow	36	22	7.3	0.2	11.2	0.40	50	206-1225
35.00	25	2	216-464	Red	39	25	8.3	0.2	12.7	0.40	50	206-1250
50.00	30	1	216-475	Blue	46	30	10.3	0.3	15	0.50	50	206-1250

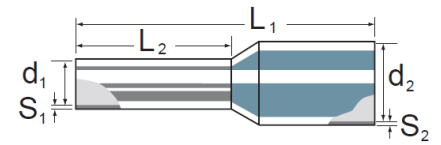
# Uninsulated Ferrules



Ferrule Size			Ferrule Part No.	Dimensions (in mm)				Minimum Order Quantity	Crimping Tool Part No.
mm <sup>2</sup>	L <sub>1</sub>	AWG		L <sub>1</sub>	D <sub>1</sub>	D <sub>2</sub>	S		
0.25	5	24	216-151	5	0.80	1.65	0.15	1000	206-1204
0.25	7	24	216-131	7	0.80	1.65	0.15	1000	206-1204
0.34	5	22	216-152	5	0.85	1.80	0.15	1000	206-1204
0.34	7	22	216-132	7	0.85	1.80	0.15	1000	206-1204
0.50	6	20	216-121	6	1.00	2.10	0.15	1000	206-1204
0.50	8	20	216-101	8	1.00	2.10	0.15	1000	206-1204
0.50	10	20	216-141	10	1.00	2.10	0.15	1000	206-1204
0.75	6	18	216-122	6	1.20	2.30	0.15	1000	206-1204
0.75	8	18	216-102	8	1.20	2.30	0.15	1000	206-1204
0.75	10	18	216-142	10	1.20	2.30	0.15	1000	206-1204
0.75	12	18	216-162	12	1.20	2.30	0.15	1000	206-1204
1.00	6	18	216-123	6	1.40	2.50	0.15	1000	206-1204
1.00	8	18	216-103	8	1.40	2.50	0.15	1000	206-1204
1.00	10	18	216-143	10	1.40	2.50	0.15	1000	206-1204
1.00	12	18	216-163	12	1.40	2.50	0.15	1000	206-1204
1.50	6	16	216-124	6	1.70	2.80	0.15	1000	206-1204
1.50	8	16	216-104	8	1.70	2.80	0.15	1000	206-1204
1.50	10	16	216-144	10	1.70	2.80	0.15	1000	206-1204
1.50	12	16	216-164	12	1.70	2.80	0.15	1000	206-1204
1.50	18	16	216-184	18	1.70	2.80	0.15	1000	206-1204
2.50	10	14	216-106	10	2.20	3.40	0.15	1000	206-1204
2.50	12	14	216-166	12	2.20	3.40	0.15	1000	206-1204
2.50	18	14	216-186	18	2.20	3.40	0.15	1000	206-1204
4.00	10	12	216-107	10	2.80	4.00	0.20	1000	206-1204
4.00	12	12	216-167	12	2.80	4.00	0.20	500	206-1204
4.00	18	12	216-187	18	2.80	4.00	0.20	500	206-1204
6.00	12	10	216-108	12	3.50	4.70	0.20	250	206-1216
6.00	18	10	216-188	18	3.50	4.70	0.20	500	206-1216
10.00	12	8	216-109	12	4.50	5.80	0.20	250	206-1216
10.00	18	8	216-189	18	4.50	5.80	0.20	250	206-1216
16.00	15	6	216-110	15	5.80	7.50	0.20	250	206-1216, 206-1225
16.00	18	6	216-190	18	5.80	7.50	0.20	250	206-1216, 206-1225
25.00	15	4	216-181	15	7.30	9.50	0.20	250	206-1225
25.00	25	4	216-413	25	7.30	9.50	0.20	250	206-1225
35.00	25	2	216-414	25	8.30	11.00	0.20	50	206-1250
35.00	30	2	216-424	30	8.30	11.00	0.20	50	206-1250
50.00	22	1	216-425	22	10.30	13.00	0.30	50	206-1250
50.00	32	1	216-435	32	10.30	13.00	0.30	50	206-1250

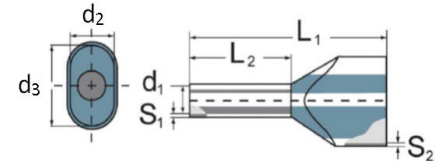


# Insulated Ferrules on a Reel



Ferrule Size			Ferrule Part No.	Color	Dimensions (in mm)						Reel Dia. in mm	Qty. on Reel
mm <sup>2</sup>	L <sub>2</sub>	AWG			L <sub>1</sub>	L <sub>2</sub>	D <sub>1</sub>	S <sub>1</sub>	D <sub>2</sub>	S <sub>2</sub>		
0.50	8	20	216-201/001-000	White	14	8	1.00	0.15	2.60	0.25	320	5000
0.50	10	20	216-241/001-000	White	16	10	1.00	0.15	2.60	0.25	320	5000
0.75	8	18	216-202/001-000	Gray	14	8	1.20	0.15	2.80	0.25	320	5000
0.75	10	18	216-242/001-000	Gray	16	10	1.20	0.15	2.80	0.25	320	5000
1.00	8	18	216-203/001-000	Red	14	8	1.40	0.15	3.00	0.25	320	5000
1.00	10	18	216-243/001-000	Red	16	10	1.40	0.15	3.00	0.25	320	5000
1.50	8	16	216-204/001-000	Black	14	8	1.70	0.15	3.50	0.25	320	5000
1.50	10	16	216-244/001-000	Black	16	10	1.70	0.15	3.50	0.25	320	5000
2.50	8	14	216-206/001-000	Blue	15	8	2.20	0.15	4.20	0.25	320	3000
2.50	10	14	216-246/001-000	Blue	17	10	2.20	0.15	4.20	0.25	320	3000

# Insulated Twin Ferrules

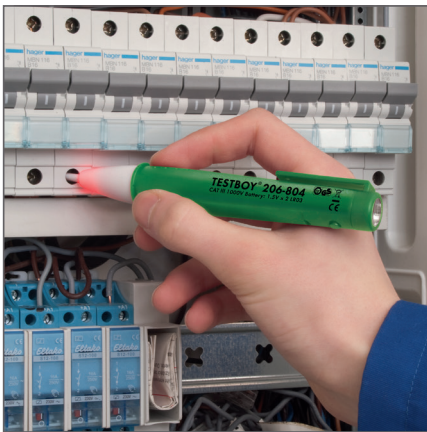


Ferrule Size			Ferrule Part No.	Color	Dimensions (in mm)							Minimum Order Quantity	Crimping Tool Part No.
mm <sup>2</sup>	L <sub>2</sub>	AWG			L <sub>1</sub>	L <sub>2</sub>	D <sub>1</sub>	S <sub>1</sub>	S <sub>2</sub>	D <sub>3</sub>	D <sub>2</sub>		
2 x 0.34	8	2 x 22	216-1519	Turquoise	15	8	1.20	0.15	0.25	3.50	2.00	1000	206-1204
2 x 0.50	8	2 x 20	216-521	White	14	8	1.40	0.15	0.30	5.00	3.00	500	206-1204
2 x 0.50	10	2 x 20	216-1530	White	16	10	1.40	0.15	0.30	5.00	3.00	1000	206-1204
2 x 0.50	12	2 x 20	216-540	White	18	12	1.40	0.15	0.30	5.00	3.00	500	206-1204
2 x 0.75	8	2 x 18	216-523	Gray	14	8	1.70	0.15	0.30	5.50	3.00	500	206-1204
2 x 0.75	12	2 x 18	216-541	Gray	18	12	1.70	0.15	0.30	5.50	3.00	500	206-1204
2 x 0.75	18	2 x 18	216-571	Gray	24	18	1.70	0.15	0.30	5.50	3.00	500	206-1204
2 x 1.00	8	2 x 18	216-526	Red	15	8	2.00	0.15	0.30	5.80	3.20	500	206-1204
2 x 1.00	14	2 x 18	216-552	Red	21	14	2.00	0.15	0.30	5.80	3.20	500	206-1204
2 x 1.00	12	2 x 18	216-542	Red	19	12	2.00	0.15	0.30	5.80	3.20	500	206-1204
2 x 1.00	18	2 x 18	216-572	Red	25	18	2.00	0.15	0.30	5.80	3.20	500	206-1204
2 x 1.50	8	2 x 16	216-527	Black	16	8	2.20	0.15	0.30	6.50	3.60	500	206-1204
2 x 1.50	12	2 x 16	216-543	Black	26	12	2.20	0.15	0.30	6.50	3.60	500	206-1204
2 x 1.50	18	2 x 16	216-573	Black	20	18	2.20	0.15	0.30	6.50	3.60	100	206-1204
2 x 2.50	10	2 x 14	216-1535	Blue	19	10	2.80	0.15	0.40	8.00	4.50	500	206-1204
2 x 2.50	12	2 x 14	216-545	Blue	21	12	2.80	0.15	0.40	8.00	4.50	100	206-1204
2 x 2.50	18	2 x 14	216-575	Blue	27	18	2.80	0.15	0.40	8.00	4.50	100	206-1204
2 x 4.00	12	2 x 12	216-546	Gray	22	12	3.50	0.20	0.50	9.00	5.20	100	206-1216
2 x 4.00	18	2 x 12	216-576	Gray	28	18	3.50	0.20	0.50	9.00	5.20	100	206-1216
2 x 6.00	12	2 x 10	216-547	Yellow	23	12	4.50	0.20	0.50	11.4	6.20	100	206-1216
2 x 6.00	18	2 x 10	216-577	Yellow	29	18	4.50	0.20	0.50	11.4	6.20	100	206-1216
2 x 10.00	12	2 x 8	216-548	Red	24	12	5.80	0.20	0.50	13.4	7.60	100	206-1216
2 x 10.00	18	2 x 8	216-578	Red	30	18	5.80	0.20	0.50	13.4	7.60	100	206-1216
2 x 16.00	16	2 x 6	216-569	Blue	29	12	8.30	0.30	0.60	17.2	9.50	50	206-1250
2 x 16.00	25	2 x 6	216-599	Blue	38	18	8.30	0.30	0.60	17.2	9.60	50	206-1250



# TEST AND MEASUREMENT DEVICES

WAGO devices are safe, compact and convenient for testing and/or measuring. AC and DC circuits can be tested and/or measured using a digital multimeter or clamp-on multimeter. Simple devices, such as 2-pole compact testers with LCD or LED display, can also be used to quickly troubleshoot control panels.



Testboy illuminates with voltage present



LED Voltage Tester



LCD Voltage Tester



<b>Testboy</b> with integrated flashlight	<b>Profi LED+ Voltage Tester</b> LED Display 2-Pole; Removable Test Probes	<b>Profi LED+ Voltage Tester</b> LCD Display 2-Pole; Removable Test Probes
--	---	---



Item No.	Pack Unit	Item No.	Pack Unit
206-804	1	206-706	1
<ul style="list-style-type: none"> <li>Voltage range: 12 - 1000 VAC</li> </ul>		<ul style="list-style-type: none"> <li>DC Voltage Range 6-1400 V</li> </ul>	
		<ul style="list-style-type: none"> <li>AC Voltage Range 6-1000 V</li> </ul>	
		<ul style="list-style-type: none"> <li>Single-pole phase search</li> </ul>	
		<ul style="list-style-type: none"> <li>Two-pole phase sequence testing</li> </ul>	
		<ul style="list-style-type: none"> <li>Optical and acoustical continuity testing</li> </ul>	
		<ul style="list-style-type: none"> <li>Auto power-on/off function</li> </ul>	
		<ul style="list-style-type: none"> <li>Includes batteries</li> </ul>	
		<ul style="list-style-type: none"> <li>DC Voltage 4-1400 V</li> </ul>	
		<ul style="list-style-type: none"> <li>AC Voltage 3-1000 V</li> </ul>	
		<ul style="list-style-type: none"> <li>Single-pole phase search</li> </ul>	
		<ul style="list-style-type: none"> <li>Two-pole phase sequence testing</li> </ul>	
		<ul style="list-style-type: none"> <li>Continuity and resistance testing</li> </ul>	
		<ul style="list-style-type: none"> <li>Illuminated LC display</li> </ul>	
		<ul style="list-style-type: none"> <li>Includes batteries</li> </ul>	



# DIN RAIL AND ACCESSORIES

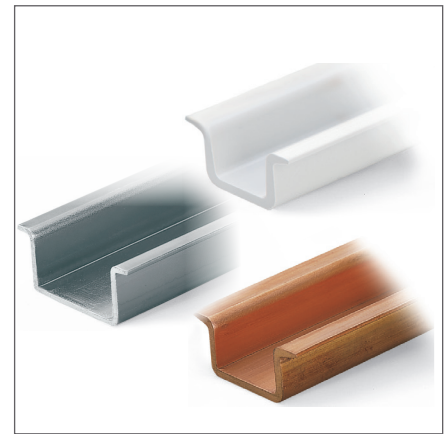
Because WAGO offers a wide variety of interconnect and automation products that are mounted on DIN rail, we offer high-quality DIN rail in steel, copper, and aluminum. Standard DIN rail is available in 2 meter lengths as solid or slotted, and in 7.5 mm or 15 mm heights. In addition to a wide variety of DIN rail, we offer accessories such as DIN rail end caps, angled support brackets, end stops and DIN rail mount jumper carriers.



Solid, slotted or custom punched



DIN rail end cap for 7.5mm high DIN rail

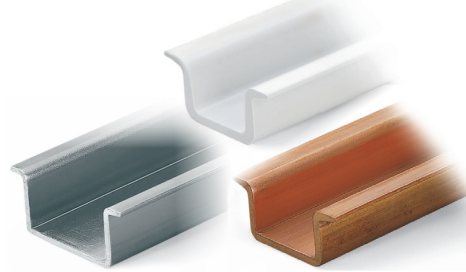
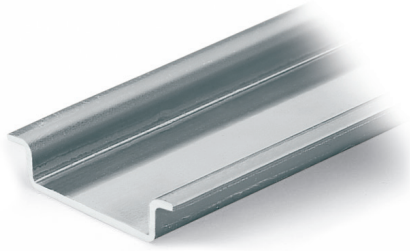


DIN rail available in copper, steel, aluminum and plastic

**DIN Rail, 2 m length**  
 Steel: 35 mm (W), 7.5 mm (H), 1 mm (T)  
 Aluminum: 35 mm (W), 8.2 mm (H), 1.6 mm (T)  
 acc. to EN 60715

**DIN Rail, 2 m length**  
 Steel: 35 mm (W), 15 mm (H), 1.5 mm (T)  
 Copper: 35 mm (W), 15 mm (H), 2.3 mm (T)  
 Plastic: 35 mm (W), 15 mm (H), 2.3 mm (T)  
 acc. to EN 60715

**Angled Support Bracket**



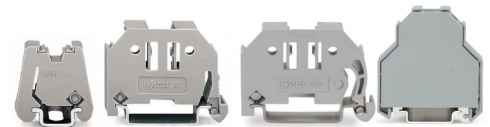
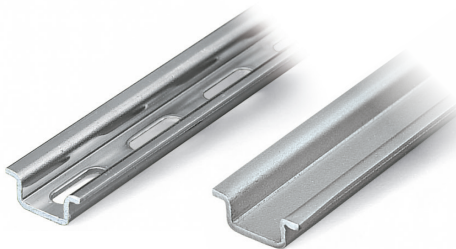
Item No.	Pack Unit	Item No.	Pack Unit	Item No.	Pack Unit
<b>Steel DIN rail, I<sub>N</sub> 76 A</b>		<b>Steel DIN rail, I<sub>N</sub> 125 A</b>		<b>Angled support bracket</b>	
Solid	210-113	10	Solid	210-114	10
Hole width 25 mm; hole spacing 36 mm		Hole width 25 mm; hole spacing 36 mm		without screw	210-148
Slotted	210-112	10	Slotted	210-197	10
Hole width 18 mm; hole spacing 25 mm				Screw M5 x 8	210-149
Slotted	210-115	1	<b>Copper DIN rail, I<sub>N</sub> 309 A</b>		100 (5 x 20)
<b>End Cap</b>	209-109	25	Solid		210-198
<b>Aluminum DIN rail, 76A</b>		<b>Plastic DIN Rail,</b>			
Solid	210-196	10	○ Gray	210-509	10

(W) - Width (H) - Height (T) - Thickness

**DIN Rail, 2 m length**  
 Steel: 15 mm (W), 5.5 mm (H), 1 mm (T)  
 Aluminum: 15 mm (W), 5.5 mm (H), 1 mm (T)  
 acc. to EN 60715

**DIN Rail Mount Jumper Holder**

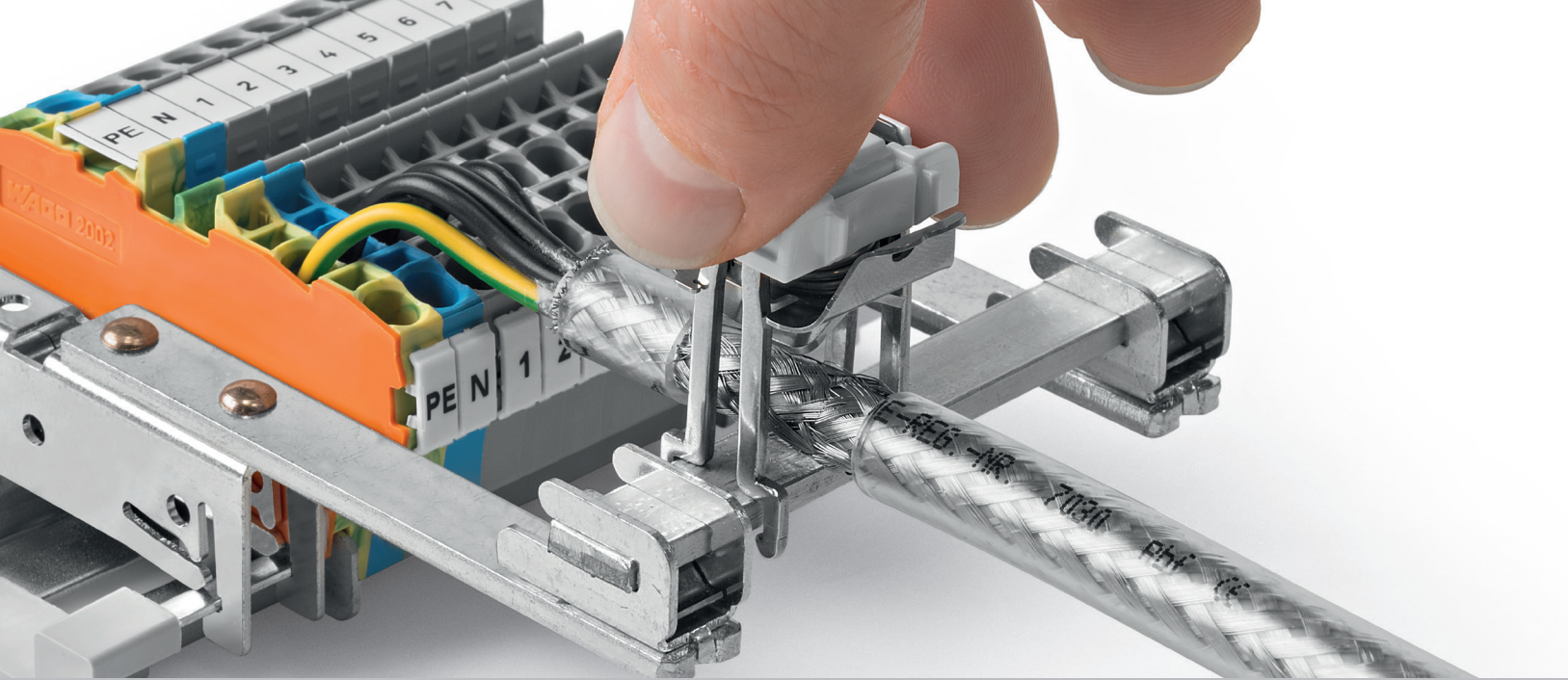
**Screwless End Stop**



Item No.	Pack Unit	Item No.	Pack Unit	Item No.	Pack Unit
<b>Steel DIN rail, I<sub>N</sub> 57 A</b>		○ Gray	209-100	25	<b>Screwless end stop, for DIN 15 rail, 6 mm wide</b>
Solid	210-295	1	for 279 - 284 series jumpers		○ Gray
<b>Aluminum DIN rail, I<sub>N</sub> 57 A</b>		○ Gray	2009-180	25	<b>Screwless end stop, for DIN 35 rail, 6 mm wide</b>
Solid	210-296	10	for 2000 to 2016 series jumpers		○ Gray
		○ Gray	282-369	25	<b>Screwless end stop, for DIN 35 rail, 10 mm wide</b>
Slotted	210-111	1	for jumpers used with 282-811 and 282-821 blocks		○ Gray
Hole width 12 mm; hole spacing 20 mm					<b>Screwless end stop, for DIN 35 rail, 14 mm wide</b>
					○ Gray
					249-197
					10

(W) - Width (H) - Height (T) - Thickness



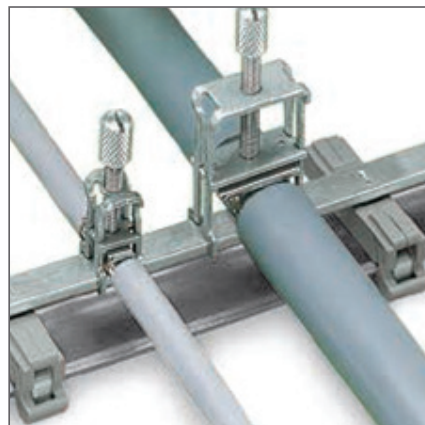


# SHIELD CONNECTION SYSTEM

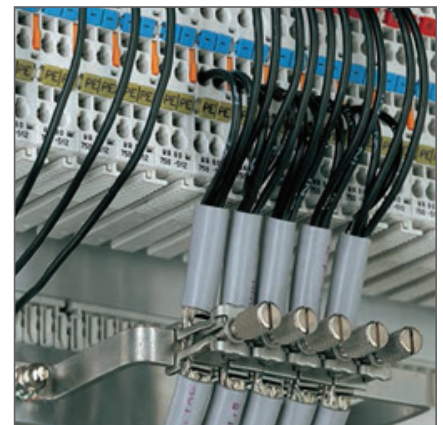
WAGO Shield Connection products assure that electrical noise and interference don't pass through and affect the performance of a control system. Reliable and vibration-proof, shield clamps with latching springs can withstand up to 15 g with 4000 shocks per axis. A wide offering of shield clamps, saddles and carriers provide superior shielding as well as flexibility, depending upon the layout of the control cabinet.



Perforated panel mount bus bar

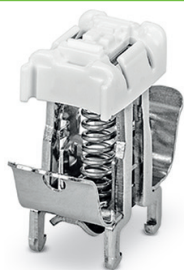


Busbar with DIN rail mount ground foot



U-shaped panel mount busbar

**Shield Clamping Saddle  
with Latching Spring**



**Shield Clamping Saddle**



Item No.	Pack Unit	Item No.	Pack Unit
for 3-8 mm Ø Conductors		for up to 8 mm Ø Conductors	
790-208	50	790-108	50
for 5-16 mm Ø Conductors		for 7-16 mm Ø Conductors	
790-216	25	790-116	50
for 5-20 mm Ø Conductors		for 6-24 mm Ø Conductors	
790-220	25	790-124	50
		for 22-40 mm Ø Conductors	
		790-140	50

**ACCESSORIES FOR SHIELD CLAMPING SADDLES**

Busbar with DIN rail mount ground foot, parallel to rail	Busbar with DIN rail mount ground foot, 90° to rail	U-shaped busbar, Cu 10 x 3 mm, panel mount
15 mm long, Cu 10x3 mm	45 mm long, Cu 10x3 mm	A=63 mm, B=60 mm
790-110 25	790-113 25	790-190 25
25 mm long, Cu 10x3 mm	<b>Busbar with 2 DIN rail mount ground feet</b>	A=100 mm, B=60 mm
790-112 25	parallel to rail	790-191 25
45 mm long, Cu 10x3 mm	125 mm long, Cu 10x3 mm	A=63 mm, B=35 mm
790-114 25	790-115 25	790-192 25
		A=100 mm, B=35 mm
		790-193 25

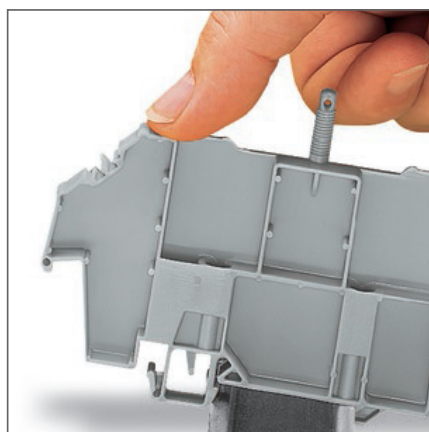
Perforated busbar rail, panel mount	Spacer sleeve for busbar rail
1000 mm long	use with M5 screw
790-145 1	790-144 200

Carrier for busbar, DIN rail mount ground foot	Adjustable carrier for busbar, DIN rail mount ground foot, with T-connector	Busbar, Cu 10x3 mm
Single side, straight, x=70mm	B=56 mm, x=70 mm	1000 mm long
790-300 10	790-350/790-398 12	210-133 1
Single side, straight, x=80mm	B=99 mm, x=70 mm	50 mm long
790-302 10	790-352/790-398 12	790-134 20
Single side, angled, x=70mm	B=56 mm, x=85 mm	30 mm long
790-301 10	790-360/790-398 12	790-133 20
Both side, straight, x=70mm	B=99 mm, x=85 mm	<b>Insulated busbar carrier,</b>
790-310 10	790-362/790-398 12	panel mount
Both side, straight, x=80mm	<b>Insulated carrier for busbar,</b>	with screw M4 x 8 mm
790-312 10	DIN rail mount	790-100 50
Both side, angled, x=70mm	790-400 20	with sheet metal screw
790-311 10		790-101 50

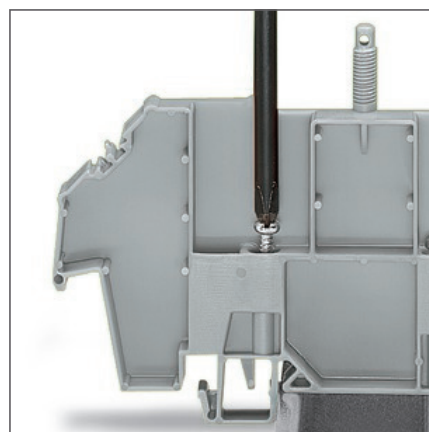


# COVERS FOR TERMINAL BLOCK ASSEMBLIES

WAGO transparent covers for rail mounted terminal blocks add protection and security. The covers come in three sizes to accommodate different terminal blocks and can be customized to the length of the rail. Assembly is simple and quick using cover carriers that snap onto the DIN rail then fasten with mounting screws. Insert a marking strip into the cover or print custom labels using the WAGO *smart*PRINTER. Also, the optional locking mechanism secures the cover and protects against tampering.



Easily snaps onto DIN rail



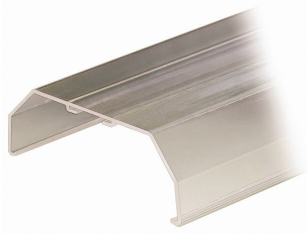
Secure on to rail by tightening screw



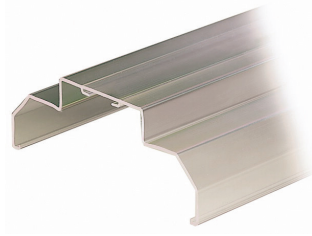
Secure cover onto carrier with nut. Security seal can be added



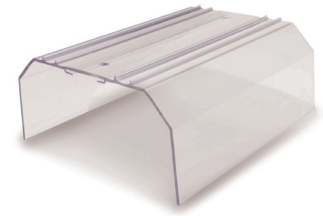
Transparent cover, type 1  
for rail-mounted terminal blocks



Transparent cover, type 2  
for rail-mounted terminal blocks

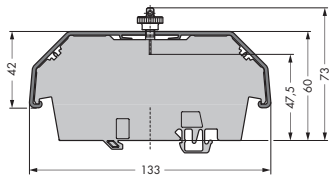
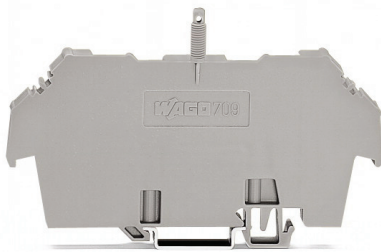


Transparent cover, type 3  
for rail-mounted terminal blocks

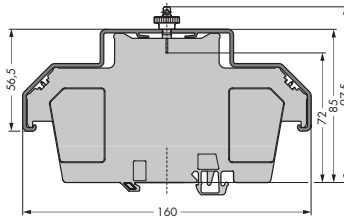
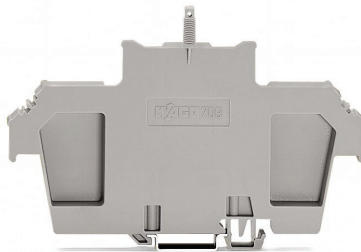


Item No.	Pack Unit	Item No.	Pack Unit	Item No.	Pack Unit
Cover, type 1, for DIN rail mount carrier type 1 1 m long		Cover, type 2, for DIN rail mount carrier type 2 1 m long		Cover, type 3, for DIN rail mount carrier type 3 1 m long	
○Transparent 709-153	10	○Transparent 709-154	10	○Transparent 709-156	10

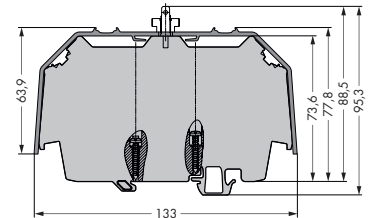
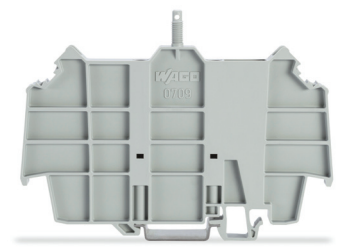
DIN rail mount carrier for transparent cover  
used with 279, 280, 281, 282, 880, 264 and  
270 Series terminal blocks



DIN rail mount carrier for transparent cover  
used with 283 to 285 Series terminal blocks,  
279 to 281 Series double- and triple-deck  
terminal blocks, and 780 to 785 Series  
TOPJOB® S terminal blocks



DIN rail mount carrier for transparent cover  
used with 2000 to 2016 Series TOPJOB® S  
terminal blocks and 2007 Series TOPJOB® S  
transformer terminal blocks



Item No.	Pack Unit	Item No.	Pack Unit	Item No.	Pack Unit
Cover carrier, type 1, with mounting and securing hardware		Cover carrier, type 2 with mounting and securing hardware		Cover carrier, type 3, with mounting and securing hardware	
○Gray 709-167	10	○Gray 709-168	10	○Gray 709-169	10



# smartDESIGNER ONLINE

[configurator.wago.com](http://configurator.wago.com)

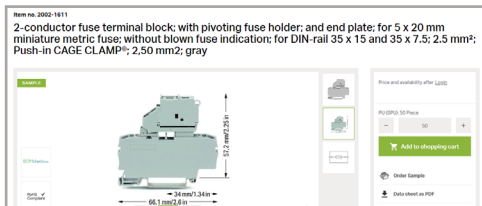
The new *smartDESIGNER* online runs exclusively on a cloud server ensuring that users will always have the most up-to-date version of the program. As a result, new WAGO components are available for use without needing a software update. The *smartDESIGNER* allows for the seamless progression of a project through planning, documenting, building, and labeling.

- Benefits:**
- No installation
  - No updating
  - Accessible anywhere
  - Newest WAGO components available immediately
  - Free

## CONCEPT

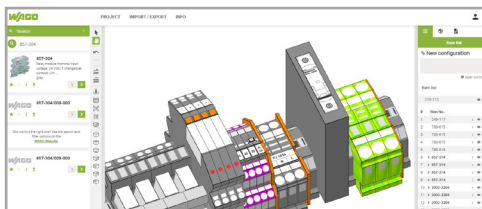


## RESEARCH



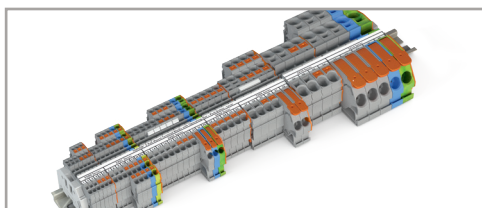
- WAGO website allows you to find the WAGO product to fit your needs
- Easy to find technical data and component specifications
- Customizable libraries for sorting commonly used components
- Add your own part numbers that follow parts through the design process

## DESIGN



- Create your assembly exactly the way you want it
- Program shows viable accessories that work with components in the project
- Generate parts list with product images
- Add custom labels that can be sent directly to a WAGO *smartPRINTER*
- Program checks your design for safety and functional build errors

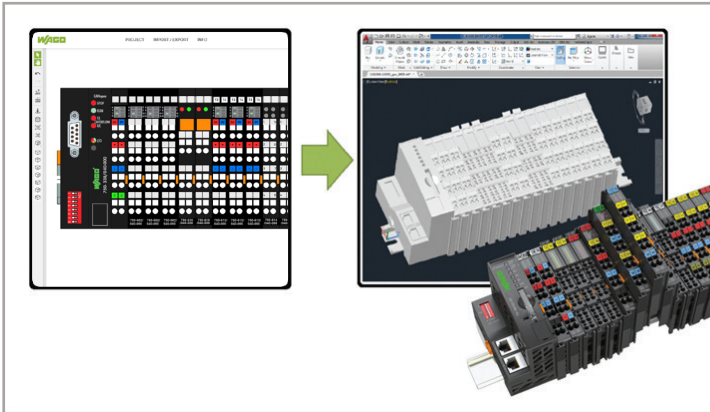
## BUILD



- Customizable project print out with multiple views and information
- Immediately print labels using WAGO *smartPRINTER*
- Export projects in numerous CAD formats for further panel design
- Send project directly to WAGO to build

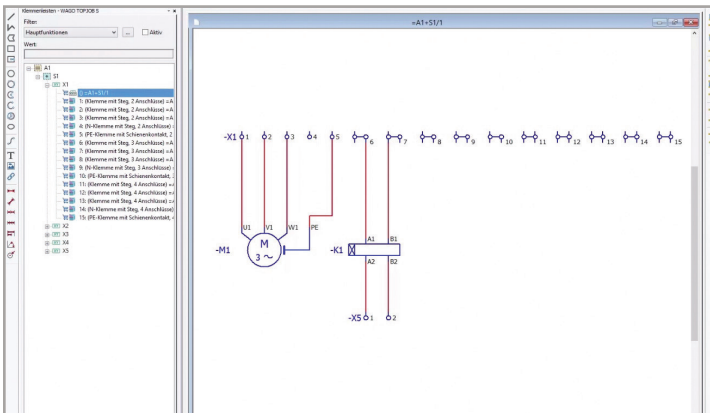
# CONFIGURATOR.WAGO.COM

## CAD EXPORT



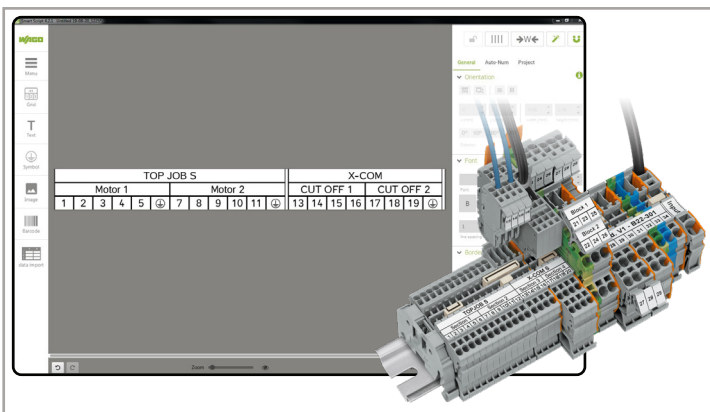
- *smartDESIGNER* can export your project as a detailed CAD drawing ready to be inserted into further project designs
- Program generates 2D and 3D models
- Exports in commonly used neutral and proprietary CAD formats such as STEP, IGES, DXF, DWG, Inventor, NX, and SolidWorks Visual Basic files

## CAE INTERFACES



- Various interfaces for electrical design programs such as EPLAN and WSCAD are available
- Projects can be exported from your design software directly into *smartDESIGNER* to check for build errors, and then reimported back into your original program
- WAGO labels can then be printed from the electrical design program right to the WAGO *smartPRINTER*

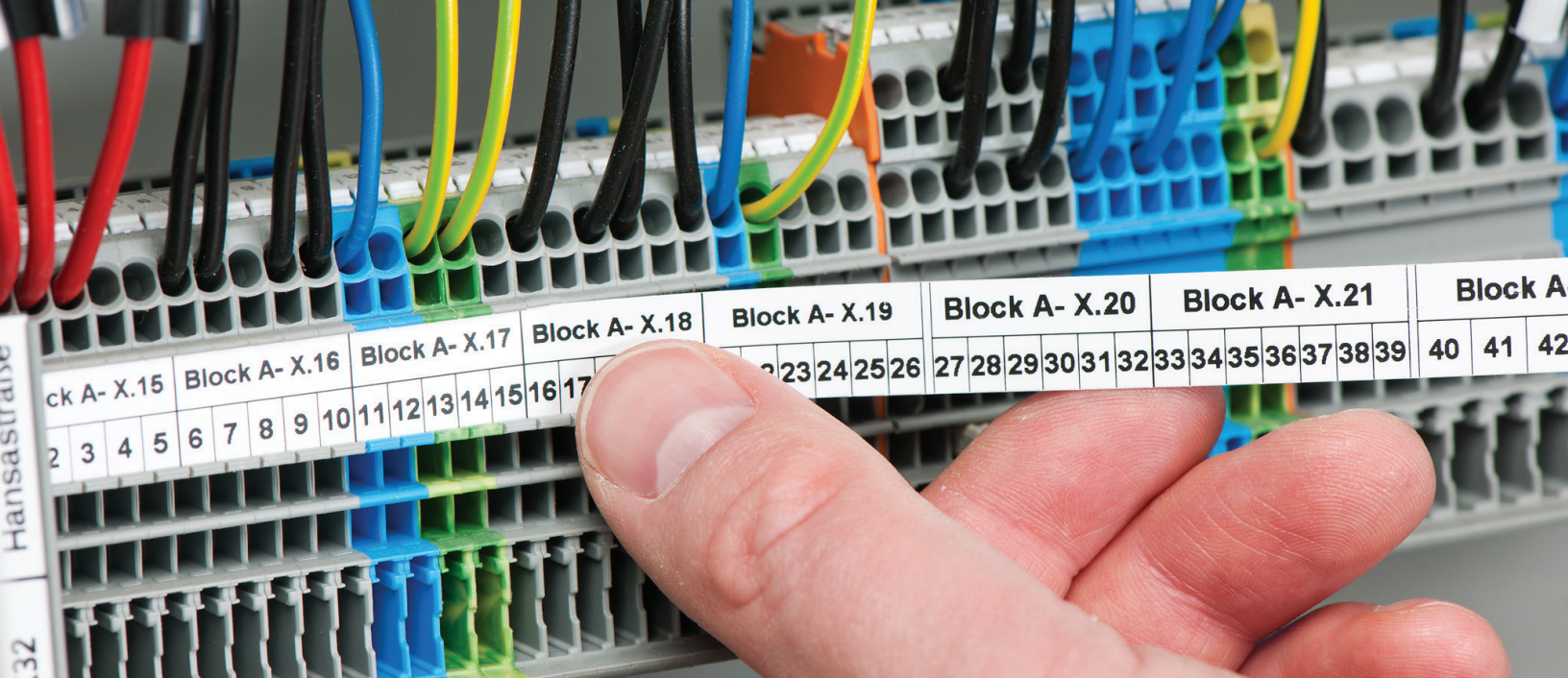
## LABELING WITH *smartSCRIPT*



- *smartSCRIPT* is a locally installed labeling program that can be used without an internet connection
- Seamlessly export labels created in *smartDESIGNER* Online directly into *smartSCRIPT*
- Create labels using the full range of WAGO marking products
- Direct output to the WAGO *smartPRINTER*

Access the *smartDESIGNER* at [configurator.wago.com](http://configurator.wago.com) and view an interactive tutorial at [configurator.wago.com/help](http://configurator.wago.com/help)



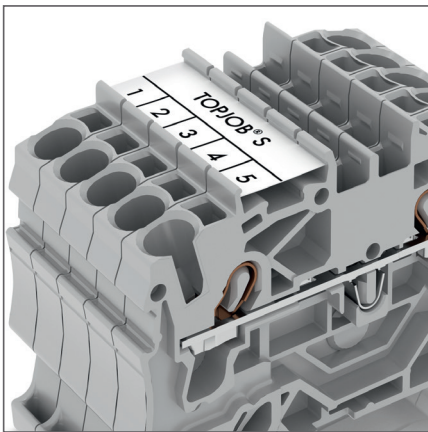


# CLEARLY MARK CONTROL CABINETS

The *smart*PRINTER is the industry's most versatile yet economical printer. Mark not only terminal blocks, relays, power supplies, and PLC's, but also quickly switch out the roll of material and mark control cabinet type plates, push-buttons, wire markers, and more.

*smart*DESIGNER offers free online configuration and ordering of all electrical interconnect and automation components in full 3D. Create and save custom assemblies, with all accessories and marking, before exporting into all standard CAD formats.

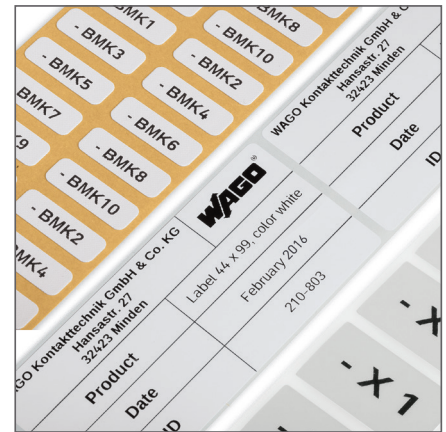
[www.wago.com/smartDESIGNER](http://www.wago.com/smartDESIGNER)



Industry exclusive continuous marker strip for terminal blocks



Cable and conductor marking



Device marking

# SAVE MONEY WITH *smart*PRINTER

## Universal Marking Solution

### Cost-Effective Marking

- Industry's most affordable printing solution
- Lower material costs
- Reduce marking time
- Minimal maintenance

### Easy to Use

- Generate all marking data directly via *smart*SCRIPT marking software

### Universal

- For any control cabinet marking application
- Mark all WAGO terminal blocks and label conductors/cables and devices

### Easy Installation

- Installation package and marking software are available at:  
[www.wago.com/smartprinter](http://www.wago.com/smartprinter)

Long-Lasting, Wipe- and Scratch-Proof Marking



*smart*PRINTER  
Item No. 258-5000

### *smart*PRINTER Includes:

- Power supply and cable
- USB cable
- 1x marking strip reel (2009-110)
- 1x WMB Inline marking reel (2009-115)
- 2x roller (258-5006 + -5007)
- 1x reel holder
- 1x ink ribbon (258-5005)

### Accessories



258-5030\* Cutter Attachment for *smart*PRINTER



Carrying case for *smart*PRINTER  
Item No. 258-5015  
Dimensions (cm):  
50 W x 26 H x 33 D



Ink ribbon, standard  
Item No. 258-5005



Ink ribbon for self-laminating labels and heat shrink  
Item No. 258-5014



# TERMINAL BLOCK MARKING

Marking Strips



WMB Inline Markers on a Roll














Item No.	Width/Color	Pack. Unit
2009-110	11 mm, white	1 roll (50 m)
709-177	7.5 mm, translucent	1 roll (50 m)
709-178	7.5 mm, white	1 roll (50 m)
757-901/ 000-050	10 mm, white	1 roll (50 m)

Item No.	Description	Pack. Unit
2009-113	WMB Inline, white, 3.5 mm stretchable	1 roll (2,300 markers)
2009-114	WMB Inline, white, 4 mm stretchable	1 roll (2,000 markers)
2009-115	WMB Inline, white, 5 mm stretchable	1 roll (1,500 markers)
2009-145	Mini-WSB Inline, white, 5 mm stretchable	1 roll (1,700 markers)
2009-515	WMB Inline for Phoenix Contact terminal blocks, white, 5 mm stretchable	1 roll (900 markers) replaces UC-TM5 and ZB5 markers
2009-615	WMB Inline for Weidmüller terminal blocks, white, 5 mm stretchable	1 roll (1,200 markers) replaces WS 10/5 marker

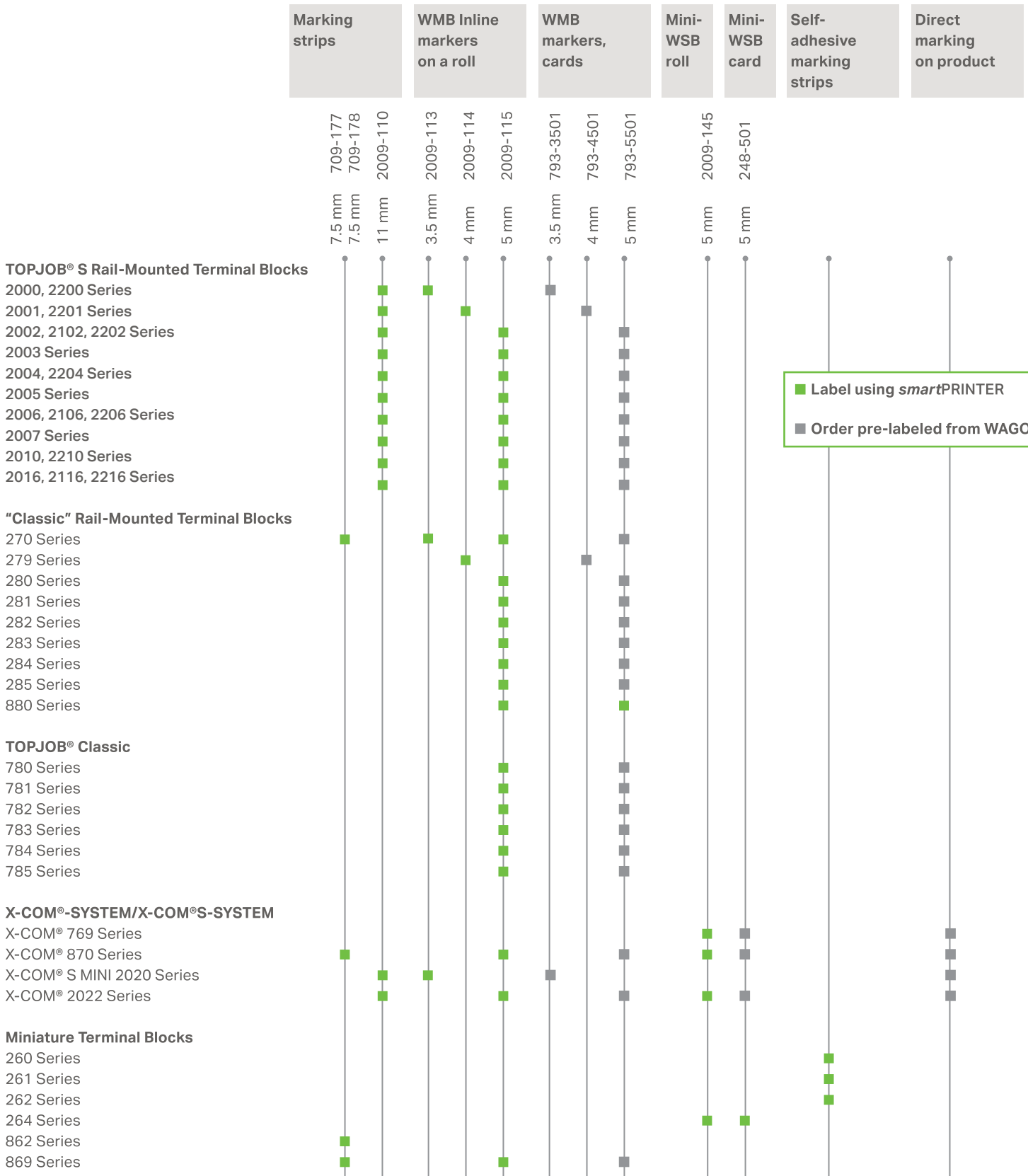


# INLINE MARKERS AND ROLLERS

Description	Compatible with Series	Color (Marker)	Item No. (Marker)	Roller	Item No. (Roller)
Marking strips, cable and conductor markers, device labels 	Pages 30-31	-	see Page 28 with exception of Weidmüller and Phoenix markers	 ● black	258-5006
WMB Inline, 3.5 mm stretchable 	Pages 30-31	<ul style="list-style-type: none"> <li>○ white</li> <li>● yellow</li> <li>● red</li> <li>● blue</li> <li>○ gray</li> <li>● orange</li> <li>● light green</li> <li>● green</li> <li>● violet</li> </ul>	2009-113 2009-113/000-002 2009-113/000-005 2009-113/000-006 2009-113/000-007 2009-113/000-012 2009-113/000-017 2009-113/000-023 2009-113/000-024	 ● green	258-5007
WMB Inline, 4 mm stretchable 	Pages 30-31	<ul style="list-style-type: none"> <li>○ white</li> <li>● yellow</li> <li>● red</li> <li>● blue</li> <li>○ gray</li> <li>● orange</li> <li>● light green</li> <li>● green</li> <li>● violet</li> </ul>	2009-114 2009-114/000-002 2009-114/000-005 2009-114/000-006 2009-114/000-007 2009-114/000-012 2009-114/000-017 2009-114/000-023 2009-114/000-024	 ● green	258-5007
WMB Inline, 5 mm stretchable 	Pages 30-31	<ul style="list-style-type: none"> <li>○ white</li> <li>● yellow</li> <li>● red</li> <li>● blue</li> <li>○ gray</li> <li>● orange</li> <li>● light green</li> <li>● green</li> <li>● violet</li> </ul>	2009-115 2009-115/000-002 2009-115/000-005 2009-115/000-006 2009-115/000-007 2009-115/000-012 2009-115/000-017 2009-115/000-023 2009-115/000-024	 ● green	258-5007
Mini-WSB Inline, plain, 5 mm stretchable 	Pages 30-31	<ul style="list-style-type: none"> <li>○ white</li> <li>● yellow</li> <li>● red</li> <li>● blue</li> <li>● orange</li> <li>● green</li> </ul>	2009-145 2009-145/000-002 2009-145/000-005 2009-145/000-006 2009-145/000-012 2009-145/000-023	 ● blue	258-5008
WMB Inline for Phoenix Contact terminal blocks, 5 mm stretchable, replaces UC-TM5 and ZB5 		○ white	2009-515	 ○ white	258-5009
WMB Inline for Weidmüller terminal blocks, 5 mm stretchable, replaces WS 10/5 		○ white	2009-615	 ● red	258-5010

# SELECTION MATRIX

## Marking Accessories and Appropriate Product Series

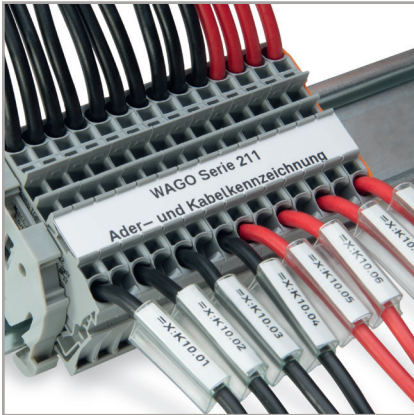


	Marking strips	WMB Inline markers on a roll	WMB markers, cards	Mini-WSB roll	Mini-WSB card	Self-adhesive marking strips	Direct marking on product
	709-177 7.5 mm	2009-113 3.5 mm	793-3501 3.5 mm	2009-145 5 mm	248-501 5 mm		
	709-178 7.5 mm	2009-114 4 mm	793-4501 4 mm				
	2009-110 11 mm	2009-115 5 mm	793-5501 5 mm				
<b>Patchboard Systems</b> 727 Series							
<b>High-Current Terminal Blocks, POWER CAGE CLAMP</b> 285 Series							
<b>PCB Terminal Blocks</b> 745 Series							
218, 233, 234, 235, 236, 243, 250, 252, 253, 254, 255, 256, 257, 735, 736, 737, 738, 739, 740, 741, 742, 804, 805, 806, 816, 2624, 2626, 2636, 2604, 2606, 2616, 2706 and 2716 Series							
<b>WAGO-I/O-SYSTEM</b> 750 Series 753 Series							
<b>INTERFACE Modules</b> 788 Series 857 Series 858 Series 859 Series							
<b>WINSTA®</b> 770 Series 890 Series							
<b>MULTI CONNECTION SYSTEM</b> 746 Series							
231, 232, 713, 714, 721, 722, 733, 734, 831, 832, 2231, 2721 Series							
<b>picoMAX®</b> 2091, 2092 Series							



# CABLE AND CONDUCTOR MARKING

## Marking Sleeves and Markers



Length: 12 mm

Item No.	Description and Color	Pack. Unit
211-812	<b>Marking sleeve</b> for 24 - 10 AWG wire diameter, transparent	1 bag (500 sleeves)
211-813	<b>Marking sleeve</b> for 8 - 2 AWG wire diameter, transparent	1 bag (500 sleeves)
211-811	<b>Marker for marking sleeve</b> 12 x 4 mm, white	1 roll (2,500 markers)

Length: 23 mm

Item No.	Description and Color	Pack. Unit
211-823	<b>Marking sleeve</b> for 24 - 10 AWG wire diameter, transparent	1 bag (500 sleeves)
211-824	<b>Marking sleeve</b> for 8 - 2 AWG wire diameter, transparent	1 bag (200 sleeves)
211-829	<b>Marking sleeve</b> Mounting via cable tie, transparent	1 bag (200 sleeves)
211-821	<b>Marker for marking sleeve</b> 23 x 4 mm, white	1 roll (2,500 markers)

## Cable Tie Markers



Item No.	Description and Color	Pack. Unit
211-835	<b>Cable tie marker</b> 25 x 20 mm (write-on surface: 25 x 10 mm), white	1 roll (500 markers)
211-836	<b>Cable tie marker</b> 100 x 15 mm, white	1 roll (800 markers)
211-836/ 000-002	<b>Cable tie marker</b> 100 x 15 mm, yellow	1 roll (800 markers)
807-0090/ 0101-0100	<b>Suitable cable ties</b>	1 bag (25 ties)

## Thread-On Wire Markers



Item No.	Description and Color	Pack. Unit
211-861	<b>Thread-on Markers</b> 5 x 10.5 mm write-on surface, 30-26 AWG, white	1 roll (1,000 markers)
211-862	<b>Thread-on Markers</b> 7 x 10.5 mm write-on surface, 24 - 18 AWG, white	1 roll (1,000 markers)
211-863	<b>Thread-on Markers</b> 10 x 17 mm write-on surface, 16 - 10 AWG, white	1 roll (1,000 markers)

## Self-Laminating Labels



Item No.	Description and Color	Pack. Unit
211-855	<b>Self-laminating labels</b> 9 x 18 mm write-on surface, white	1 roll (1,000 labels)
211-856	<b>Self-laminating labels</b> 15 x 12 mm write-on surface, white	1 roll (1,000 labels)
211-857	<b>Self-laminating labels</b> 18 x 44 mm write-on surface, white	1 roll (500 labels)

\*Requires alt. ink ribbon 258-5014

## Shrink Tubing (3:1 Shrink Ratio)

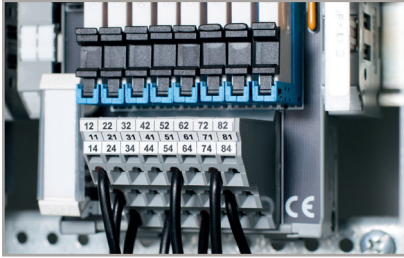


Item No.	Size	Recommended Diameter	Pack. Unit
60418068	1/8", White	24-18 AWG	1 roll (100 ft)
51227742	1/8", Yellow	24-18 AWG	1 roll (100 ft)
51223871	3/16", White	16 - 12 AWG	1 roll (100 ft)
51227743	3/16", Yellow	16 - 12 AWG	1 roll (100 ft)
60387715	1/4", White	12 - 8 AWG	1 roll (100 ft)
51227744	1/4", Yellow	12 - 8 AWG	1 roll (100 ft)
51273038	1/2", White	6-1/0 AWG	1 roll (100 ft)

\*Requires alt. ink ribbon 258-2014

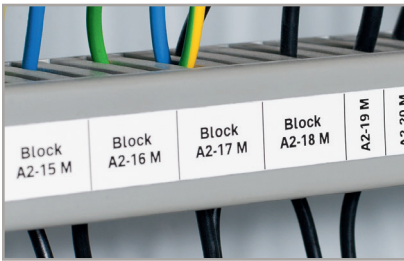
# DEVICE MARKING

## Self-Adhesive Continuous Labels



Item No.	Description and Color	Pack. Unit
210-831	9 lines, 2.3 mm wide, white	1 roll (25 m)
210-832	9 lines, 3 mm wide, white	1 roll (25 m)
210-834	5 lines, 5 mm wide, white	1 roll (25 m)
210-833	5 lines, 6 mm wide, white	1 roll (25 m)

## Self-Adhesive Marking Strips



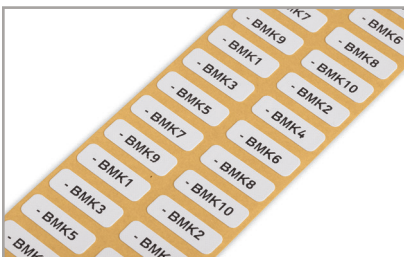
Item No.	Description and Color	Pack. Unit
210-702	15 mm wide, white	1 roll (50 m)
210-870	10 mm wide, white	1 roll (20 m)
210-871	10 mm wide, silver	1 roll (20 m)
210-872	20 mm wide, white	1 roll (20 m)
210-873	20 mm wide, silver	1 roll (20 m)
210-874	30 mm wide, white	1 roll (20 m)
210-875	30 mm wide, silver	1 roll (20 m)
210-876	46 mm wide, white	1 roll (20 m)
210-876/000-002	46 mm wide, yellow	1 roll (20 m)
210-877	46 mm wide, silver	1 roll (20 m)

## Self-Adhesive Polyester Labels



Item No.	Description and Color	Pack. Unit
210-805	6 x 15 mm, white	1 roll (3,000 labels)
210-805/000-002	6 x 15 mm, yellow	1 roll (3,000 labels)
210-806	9 x 15 mm, white	1 roll (3,000 labels)
210-806/000-002	9 x 15 mm, yellow	1 roll (3,000 labels)
210-807	8 x 20 mm, white	1 roll (3,000 labels)
210-807/000-002	8 x 20 mm, yellow	1 roll (3,000 labels)
210-808	9.5 x 25 mm, white	1 roll (1,500 labels)
210-810	5 x 35 mm, white	1 roll (1,500 labels)

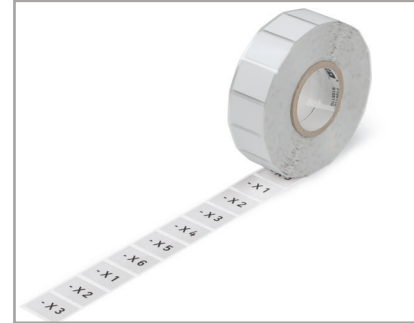
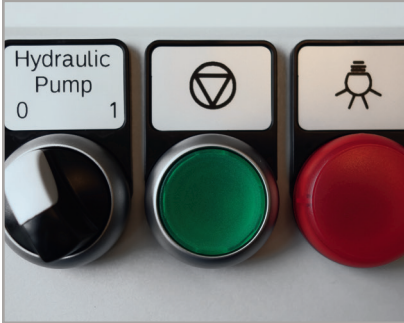
## Self-Adhesive Fabric Labels



Item No.	Description and Color	Pack. Unit
210-811	7 x 20 mm, 1 line, white	1 roll (3,000 labels)
210-811/000-002	7 x 20 mm, 1 lines, yellow	1 roll (3,000 labels)



## Push-Button Markers



Item No. (Push-Button Marker)	Size	Pack. Unit	Color/Other	Accessories for Push-Button Markers	Pack. Unit
<b>210-850*</b>	26.5 x 18.0 mm	1 roll (1,000 markers)	silver, detachable adhesive	<b>210-851</b> Cover, transparent	100 covers
<b>210-856**</b>	27.5 x 17.5 mm	1 roll (1,000 markers)	silver, detachable adhesive	<b>210-857</b> Cover, transparent	100 covers
<b>210-858**</b>	22.0 x 22.0 mm	1 roll (1,000 markers)	silver, permanent adhesive	<b>210-859</b> Cover, transparent	100 covers
<b>210-860**</b>	27.0 x 27.0 mm	1 roll (1,000 markers)	silver, permanent adhesive	<b>210-861</b> Cover, transparent	100 covers
<b>210-862**</b>	27.0 x 12.5 mm	1 roll (1,000 markers)	silver, permanent adhesive	<b>210-863</b> Cover, transparent	100 covers
<b>210-852</b>	27.0 x 19.0 mm	1 roll (350 markers)	silver, permanent adhesive	<b>210-853</b> Frame for 22.5 mm Push-buttons, Black	100 frames
<b>210-855</b>	27.0 x 18.0 mm	1 roll (350 markers)	silver, permanent adhesive	-	-
<b>210-854</b>	28.0 x 28.0 mm	1 roll (500 markers)	silver, permanent adhesive	-	-
<b>210-847</b>	22.0 x 22.0 mm	1 roll (300 markers)	silver, permanent adhesive	-	-
<b>210-848</b>	27.0 x 27.0 mm	1 roll (250 markers)	silver, permanent adhesive	-	-

\* For Eaton    \*\* For Siemens

## Type Plates



Item No.	Description and Color	Pack. Unit
<b>210-801</b>	33 x 70 mm, white	1 roll (500 plates)
<b>210-802</b>	33 x 70 mm, silver	1 roll (500 plates)
<b>210-803</b>	44 x 99 mm, white	1 roll (500 plates)
<b>210-804</b>	44 x 99 mm, silver	1 roll (500 plates)
<b>210-812</b>	25 x 50 mm, silver	1 roll (500 plates)

## Void/Tamper-Proof Label



Item No.	Description and Color	Pack. Unit
<b>60328726</b>	38 x 76 mm, silver	1 roll (500 labels)

WAGO Corporation  
N120 W19129 Freistadt Road  
Germantown, Wisconsin 53022  
Telephone: 800 / DIN-Rail (346-7245)  
Fax: 262 / 255-3232  
info.us@wago.com  
www.wago.us

WAGO Canada Inc.  
1550 Yorkton Ct, Unit #1  
Burlington, ON  
L7L 6A3  
Telephone: 888 / WAGO 221 (924-6221)  
info.ca@wago.com  
www.wago.ca

WAGO SA DE CV  
Carretera estatal 431 Km. 2+200. Lote 99 6  
Parque Industrial Tecnológico Innovación Querétaro  
El Marques, Qro. 76246  
Lada sin Costo: 01 800 288 WAGO (288-9246)  
Teléfono: 422 / 221-5946  
info.mx@wago.com  
www.wago.mx

WAGO is a registered trademark of WAGO Verwaltungsgesellschaft mbH.

"Copyright – WAGO Kontakttechnik GmbH & Co. KG – all rights reserved. The content and structure of the WAGO Websites, catalogs, videos, and other WAGO media are subject to copyright. The dissemination or changing of the content of these pages and videos is not permitted. Furthermore, the content may neither be copied nor made available to third parties for commercial purposes. Also subject to copyright are the images and videos that were made available to WAGO Kontakttechnik GmbH & Co. KG by third parties."